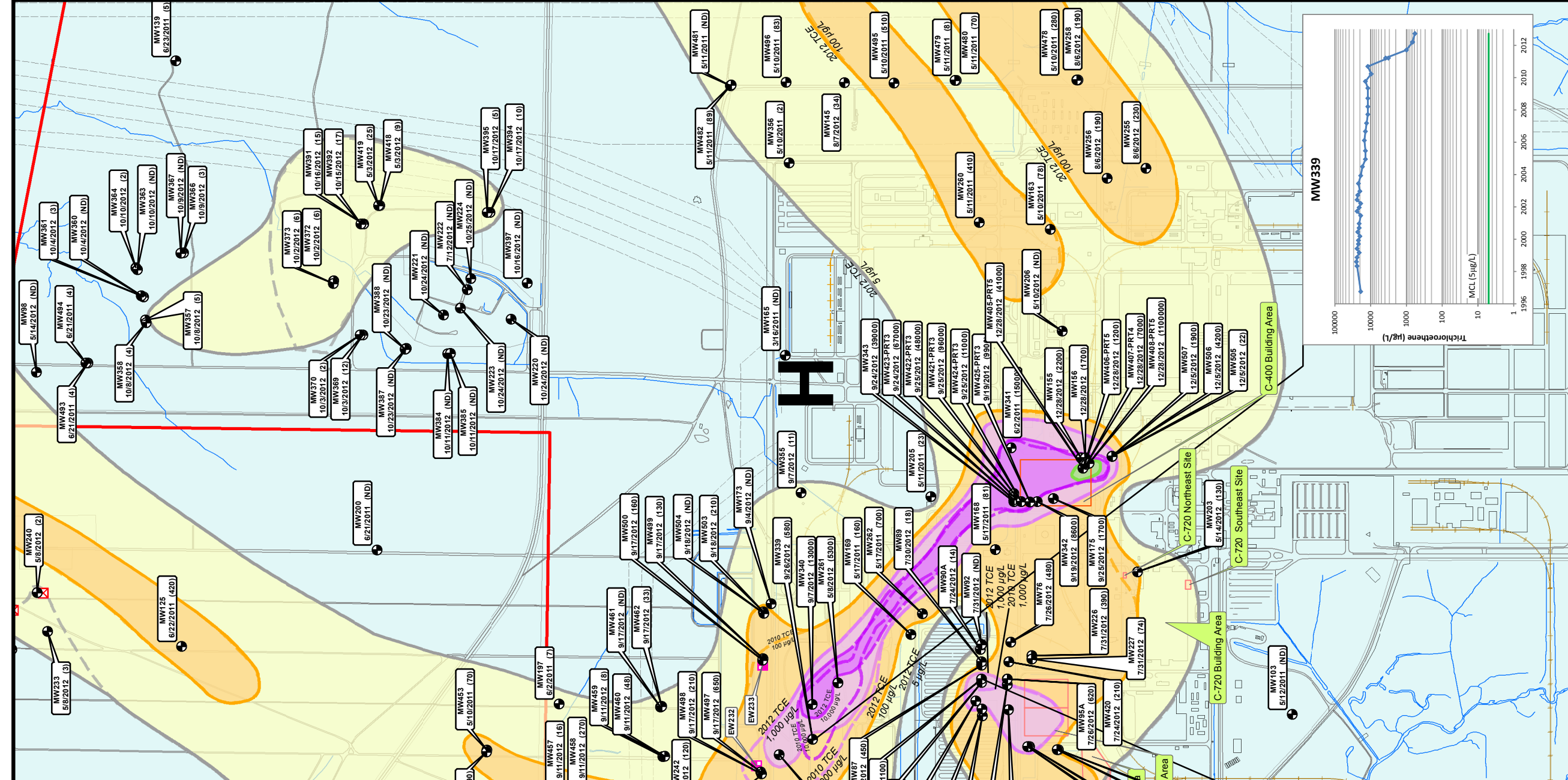
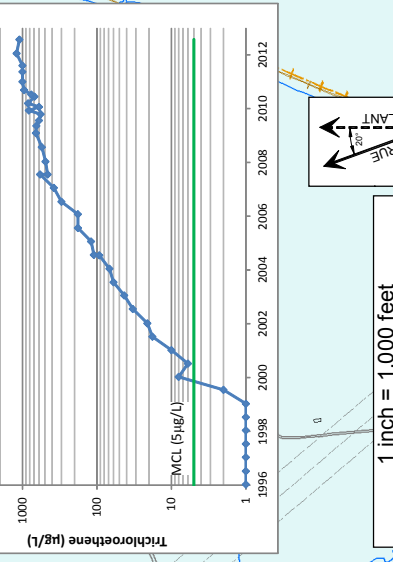
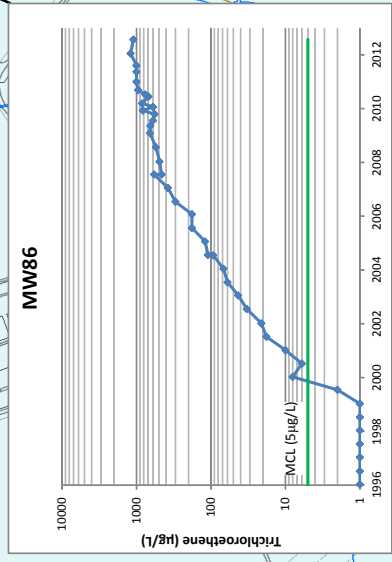
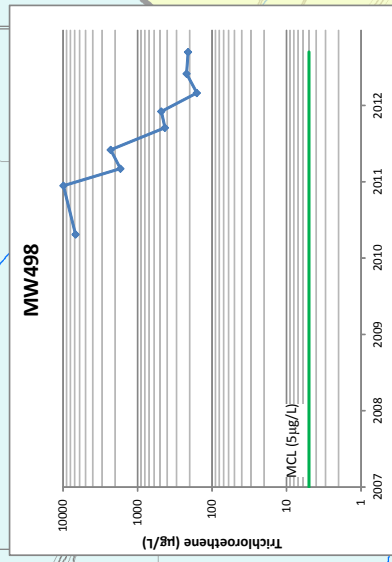


- Notes:
1. Data from the most recent 2012 sampling event used except where noted.
  2. For co-located wells completed at multiple depths, the highest value for the period was mapped.
  3. Isoconcentration lines are dashed where inferred for 2012 data and to depict the 2010 plumes.



- LEGEND**
- 2012 TCE Plume Concentration Fields
    - 5 - 100 µg/L
    - 100 - 1,000 µg/L
    - 1,000 - 10,000 µg/L
    - 10,000 - 100,000 µg/L
    - ≥ 100,000 µg/L
  - 2010 TCE Plume Isoconcentration Lines
    - 5 - 100 µg/L
    - 100 - 1,000 µg/L
  - Water Policy Area
  - Areas of Investigation during 2011-2012
  - Parcel Lines
  - Monitoring Well Identification, Date of Sample & Sample Value
  - RGAs Well
  - Extraction Well
  - DOE Property Boundary
  - Roadways
  - Streams
  - Railroad
  - TVA Powerlines