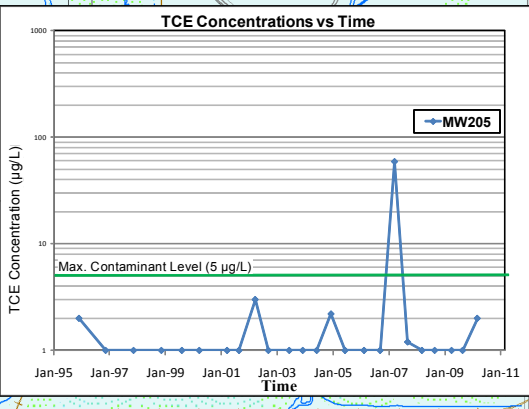
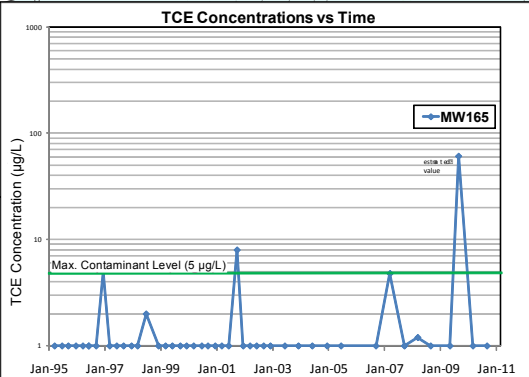
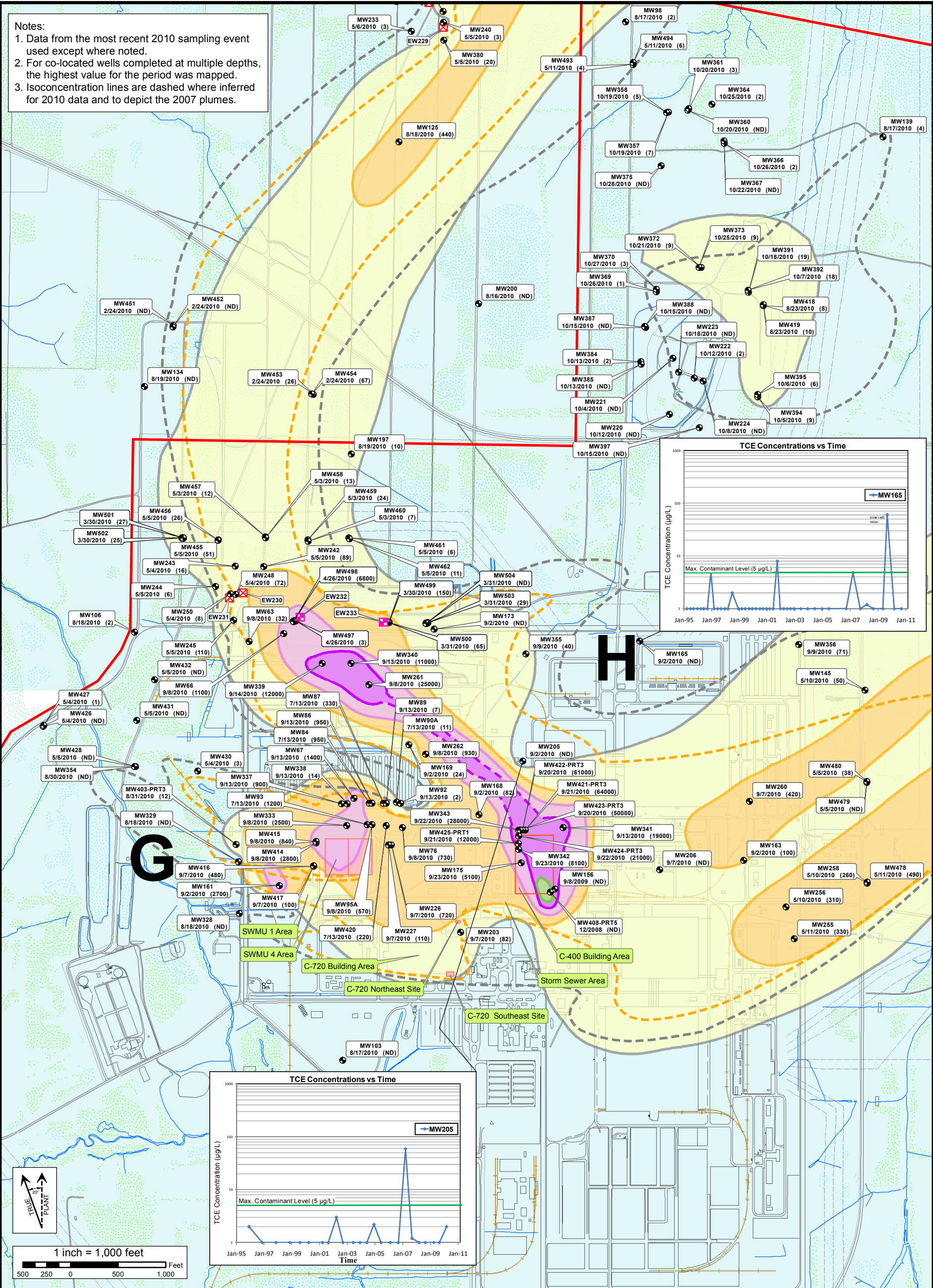


Notes:
 1. Data from the most recent 2010 sampling event used except where noted.
 2. For co-located wells completed at multiple depths, the highest value for the period was mapped.
 3. Isoconcentration lines are dashed where inferred for 2010 data and to depict the 2007 plumes.



2010 Plume Concentration Fields		2007 Plume Isoconcentration Lines		Legend	
Yellow	- TCE ≥ 5 µg/L	Dashed	- TCE = 5 µg/L	Light Blue	- Water Policy Area
Orange	- TCE ≥ 100 µg/L	Dashed	- TCE = 100 µg/L	Red	- Source Areas
Pink	- TCE ≥ 1,000 µg/L	Dashed	- TCE = 100 µg/L	Black	- Parcel Lines
Purple	- TCE ≥ 10,000 µg/L			Black	- Monitoring Well Identification, Date of Sample & Sample Value
Green	- TCE ≥ 100,000 µg/L			Black	- RGA Well
				Black	- Extraction Well
				Black	- Inactive Extraction Well

LATA Environmental Services
of Kentucky, LLC

U.S. DEPARTMENT OF ENERGY
PORTSMOUTH / PADUCAH PROJECT OFFICE
PADUCAH GASEOUS DIFFUSION PLANT

Figure 4. 2010 Central Portion of the TCE Plume Regional Gravel Aquifer

FILE NAME: Fig_04_2007_2010_Plumes_TCE_Central_r1	PROJECT #: EM	SCALE: AS NOTED	DATE: 08-29-2011
--	------------------	--------------------	---------------------

G:\SISARC\PROJECTS\PLUMES\2007_2010_Plumes\Fig_04_2007_2010_Plumes_TCE_Central_r1.mxd 20110829