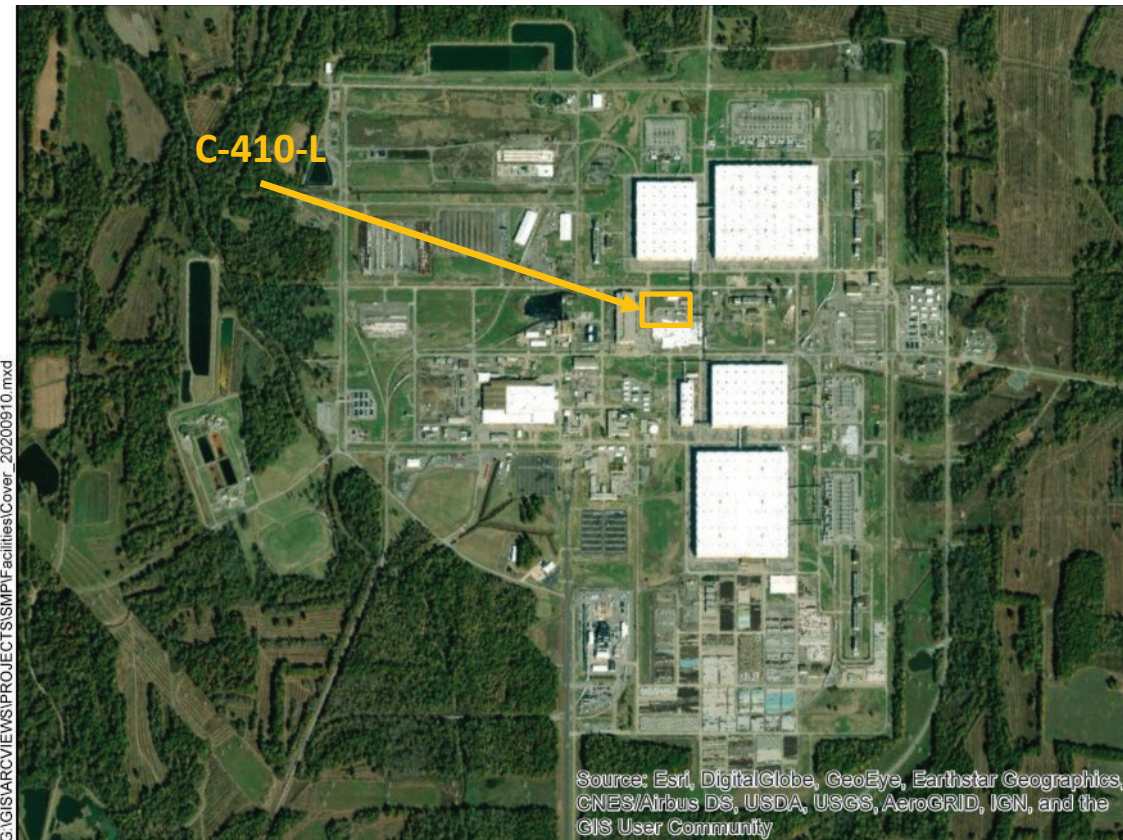


# C-410-L Quonset Hut



## Facility Overview Briefing

March 4, 2021

Reflects consultation with EPA and Kentucky in accordance with the Site Management Plan that occurred on February 1, 2021, and includes incorporation of comments from those discussions.

# Purpose

- The C-410-L Quonset Hut is a candidate for future demolition and disposal, contingent on funding priorities.
- Listed in Appendix 6 of the Site Management Plan (SMP) and requires consultation with EPA and Kentucky for CERCLA screening prior to demolition.
- This presentation is intended to serve as consultation, providing the basis for demolition and disposal of the aboveground structure outside of the FFA/CERCLA process.
- The slab/soils would remain for future CERCLA evaluation under Geographical Area (GA) 13.



C-410-L Facility Photo: 10/2020

# Construction History

- C410-L is located within the Paducah Site security fence, north of C-410 Feed Plant and east of C-400 Cleaning Building.
- The C-410-L facility was constructed in 2007.
- The facility is a freestanding, prefabricated metal facility.
- Placed on approximately 846 ft<sup>2</sup> of new concrete and has approximately 750 ft<sup>2</sup> of usable storage space.
  - Measuring ~20 ft x ~40 ft (outside dimension of the structure )



C-410-L Facility Photo: 10/2020

# Operational History

➤ C-410-L was originally constructed in 2007 to support C-410 demolition activities and served as a new equipment storage/receiving area.

- Receipt inspections
- Assembly of tools/equipment
- On-the-job training for new equipment
- Minor maintenance activities
- Small quantities of chemicals temporarily stored (e.g., vacuum oil, kerosene, diesel, grease, alumina, NaF traps)
- No history or knowledge of spills

➤ Upon completion of C-410 demolition, C-410-L was converted to support emergency spill response activities beginning in 2015.

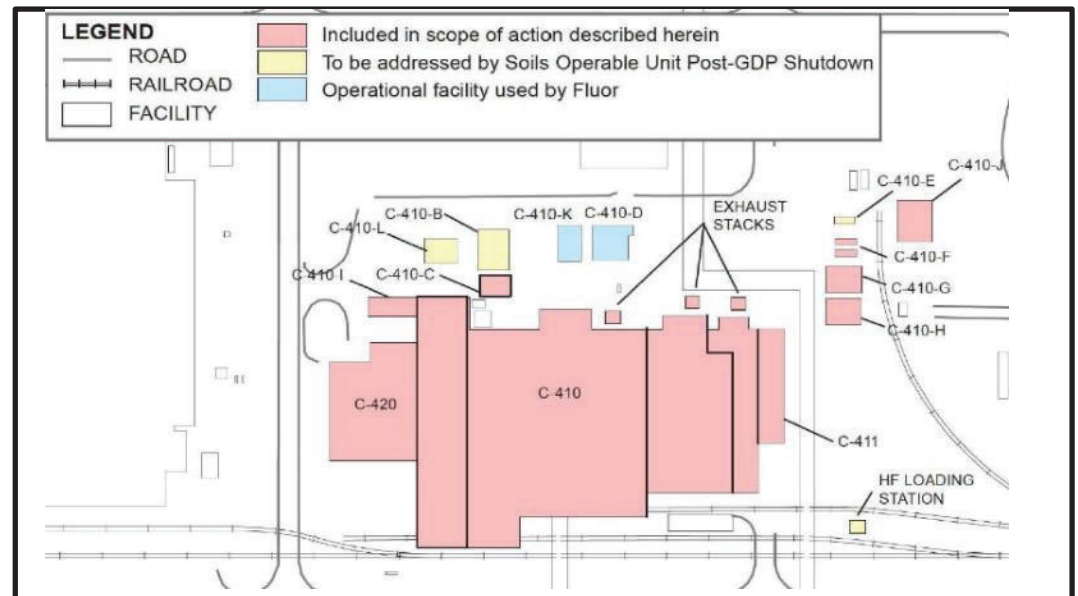
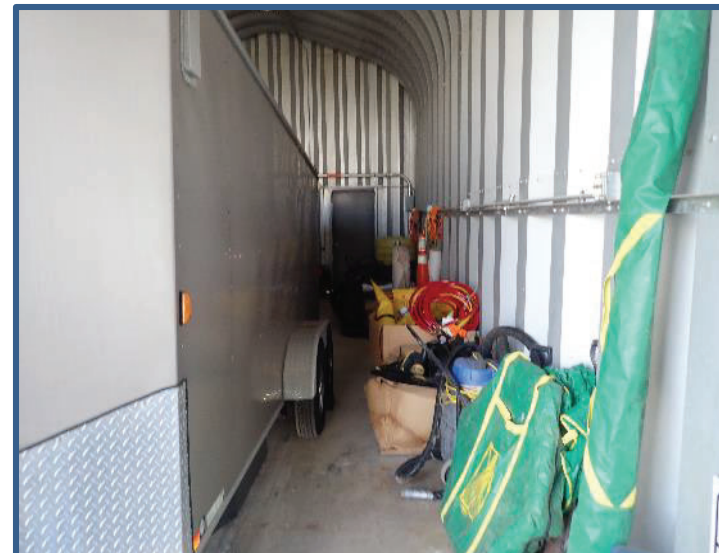


Figure from Removal Action Report for the C-410 Complex Infrastructure Decontamination and Decommission Project (DOE/LX/07-2182&D1) dated December 2018

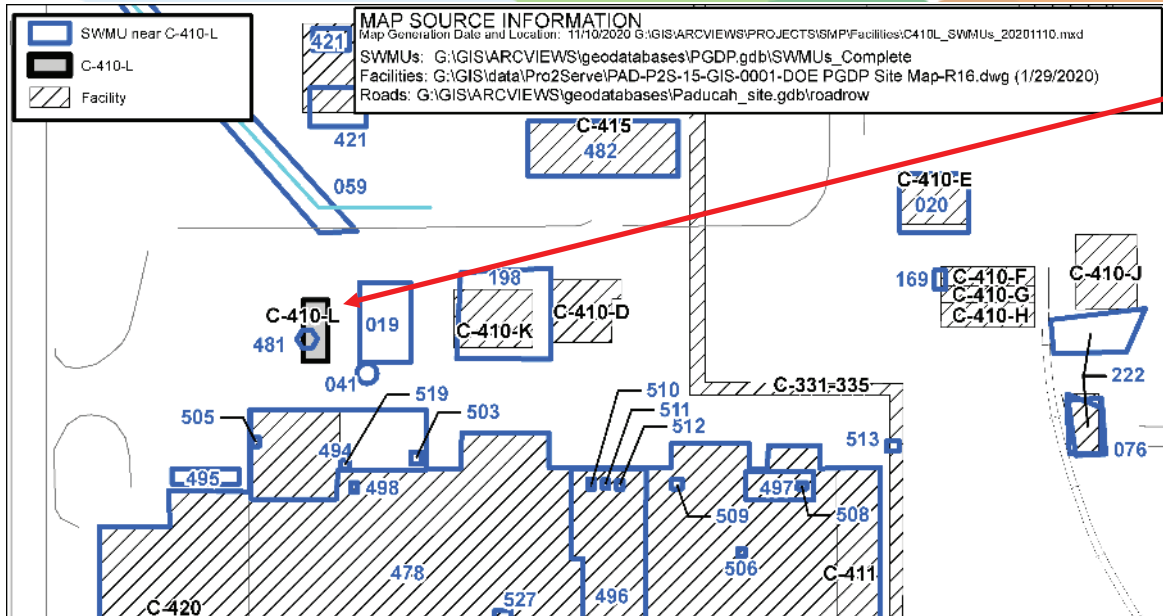
# Current Status

- C-410-L continues to operate and serves to house emergency spill response supplies.
- Walkdown inspection conducted in October 2020 confirmed no unusual conditions.
  - No floor sumps, floor drains, or visible staining.
  - Contains all material necessary for spill response (e.g., pigs, absorbant, PPE).
  - Houses portable trailer for spill response.
  - Electrical lines on outside of the building are for generator hook up (if needed).
  - The building has been de-energized.



C-410-L Facility Photos: 10/2020

# Environmental Impacts (Solid Waste Management Units)



- The C-410-L Quonset Hut is not designated as a SWMU/AOC.
- SWMU 481 (C-410-A Hydrogen Holder) original footprint lies in close proximity to and possibly underlying the outer edge of C-410-L, and will be evaluated as part of GA-13.

SWMU No.	Facility Name	Current Status
019	C-410-B HF Neutralization Lagoon	Soils Remedial
020	C-410-E HF Emergency Holding Pond slab and underlying soils	Soils and Slabs OU
041	C-410-C Neutralization Tank slab and underlying soils	Soils and Slabs OU
059	NSDD (Inside)	Final CSOU
076	C-632-B Sulfuric Acid Storage Tank	Soils Remedial
169	C-410-E HF Vent Surge Protection Tank	Soils Remedial
198	C-410-D Area Soil Contamination slab and underlying soils	Soils and Slabs OU
222	OS-11	Soils Remedial
421	G-754-01	NFA (KDWM 1/4/2006)
478	C-410/420 Feed Plant building slab and underlying soils	Soils and Slabs OU
481	C-410-A Hydrogen Holder	NFA (KDWM 4/2/2002)
482	C-415 Feed Plant Storage Building slab and underlying soils	Soils and Slabs OU and Remaining D&D
494	Ash Receiver Area in C-410/420	NFA (KDWM 6/3/2016; EPA 6/9/2016)
495	C-410-I Ash Receiver Shed	NFA (KDWM 6/3/2016; EPA 6/9/2016)

SWMU No.	Facility Name	Current Status
496	C-410 Fluorine/Hydrogen Filters (Northeast Mezzanine)	NFA (KDWM 6/3/2016; EPA 6/9/2016)
497	C-410/420 F <sub>2</sub> Cell Neutralization Room Vats	NFA (KDWM 6/3/2016; EPA 6/9/2016)
498	C-410/420 Sump at Column D & E-1&2 slab and underlying soils	Soils and Slabs OU
503	C-410/420 Sump at Column G-1 slab and underlying soils	Soils and Slabs OU
505	C-410/420 Sump at Column A-3N slab and underlying soils	Soils and Slabs OU
506	C-410/420 Sump at Column Wa-9 slab and underlying soils	Soils and Slabs OU
508	C-410/420 Settling Basin slab and underlying soils	Soils and Slabs OU
509	C-410/420 Drain pit slab and underlying soils	Soils and Slabs OU
510	C-410/420 Sump at Column P&Q-2 slab and underlying soils	Soils and Slabs OU
511	C-410/420 Sump at Column Q&R-2 slab and underlying soils	Soils and Slabs OU
512	C-410/420 Sump at Column R-2 slab and underlying soils	Soils and Slabs OU
513	C-411 Cell Maintenance Room Sump slab and underlying soils	Soils and Slabs OU
519	C-410 Sulfuric Acid Tank (C-634-B)	NFA (KDWM 1/10/2003)
527	C-410 GSA/SAA at Column J-6	NFA (KDWM 8/28/2007)

# Environmental Impacts

- No information to indicate a release or threatened release of a hazardous substance that would require an evaluation for a potential response action to protect future public health or welfare or the environment.
  - C-410-L has been used solely as a storage type facility since its initial construction in 2007.
  - Building materials used for construction could contain lead-based paints and asbestos materials, both of which can be effectively verified during a pre-demolition inspection and properly managed using standard demolition and waste management practices.
  - No history or records of chemical use or spills that would pose environmental release threat.

# Conclusion and Recommendations

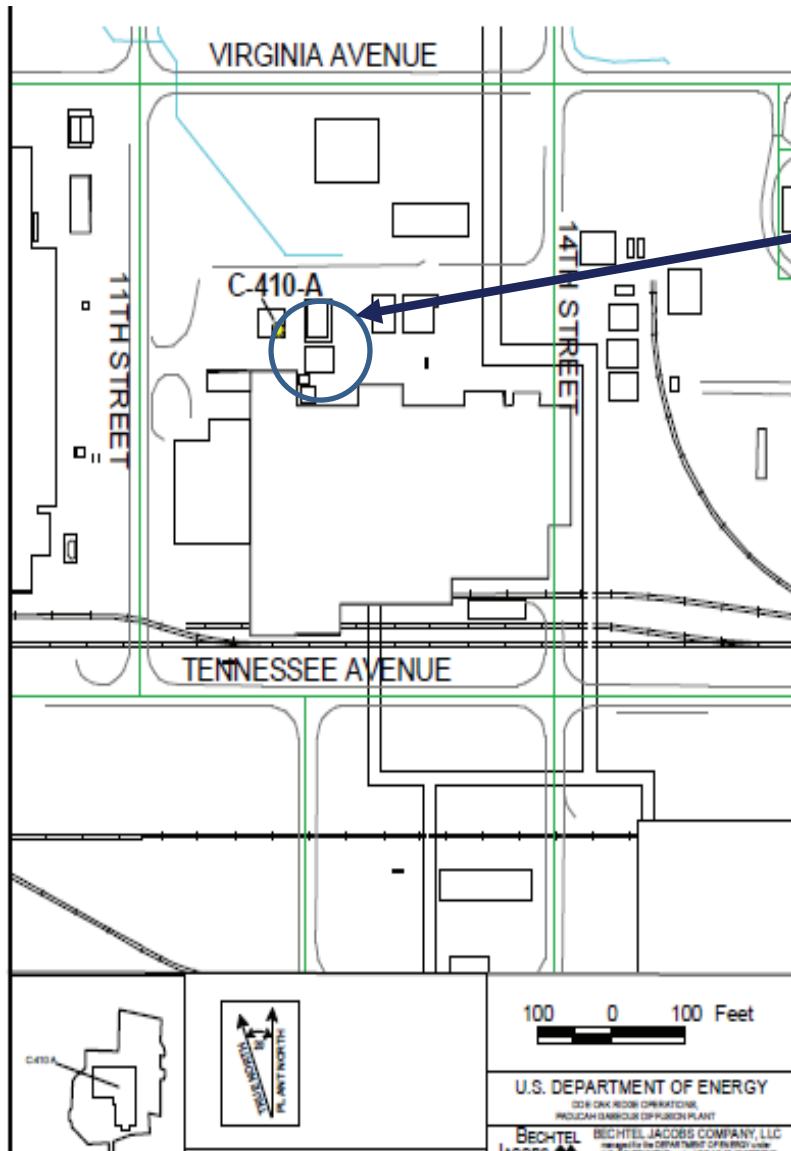
- Walkdown inspection of the facility, employee interviews, and other reviewed historical information did not identify any unusual conditions that would pose a potential threat of environmental release during future demolition of the aboveground structure.
- Pending ceasing of operation, deactivation, and availability of funding, DOE/FRNP proposes to proceed with demolition and disposal of the C-410-L (aboveground structure) outside of the FFA/CERCLA process contingent upon the fact that no additional changes have occurred that would affect the CERCLA determination of the facility prior to demolition.
- All applicable laws, regulations, and DOE procedures/protocols will be followed to ensure the demolition and disposal occurs in a safe, compliant manner, including conducting additional radiological characterization through confirmation radiological surveys (as needed) to support demolition and waste disposition.
- Document the removal of the C-410-L facility in the appropriate annual SMP revision.
- The future evaluation conducted for GA 13 will further evaluate the potential threat of release associated with the concrete pad/soils from the C-410-L facility.



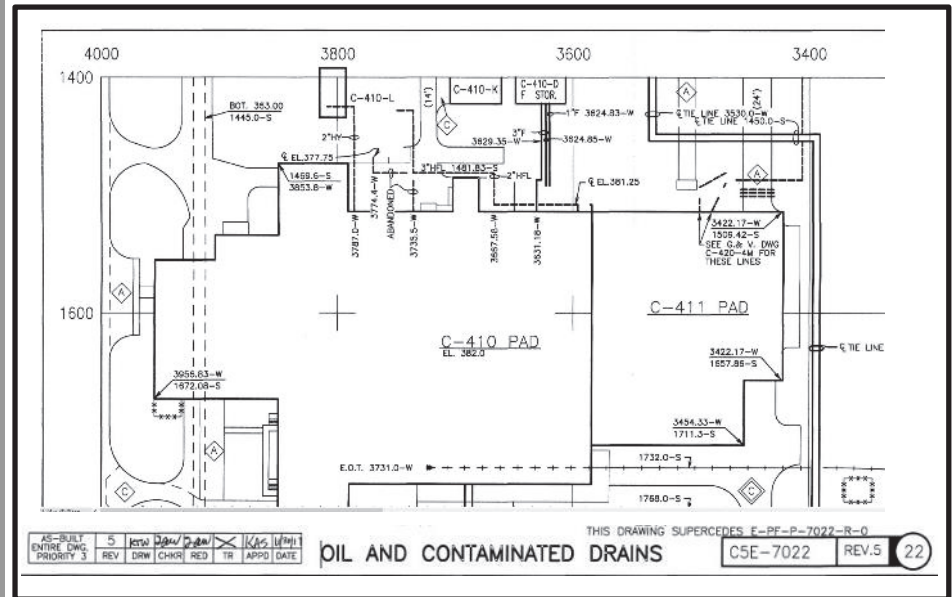
# C-410-L Quonset Hut

BACKUP INFORMATION

# SWMU 481 (C-410-A Hydrogen Holder)



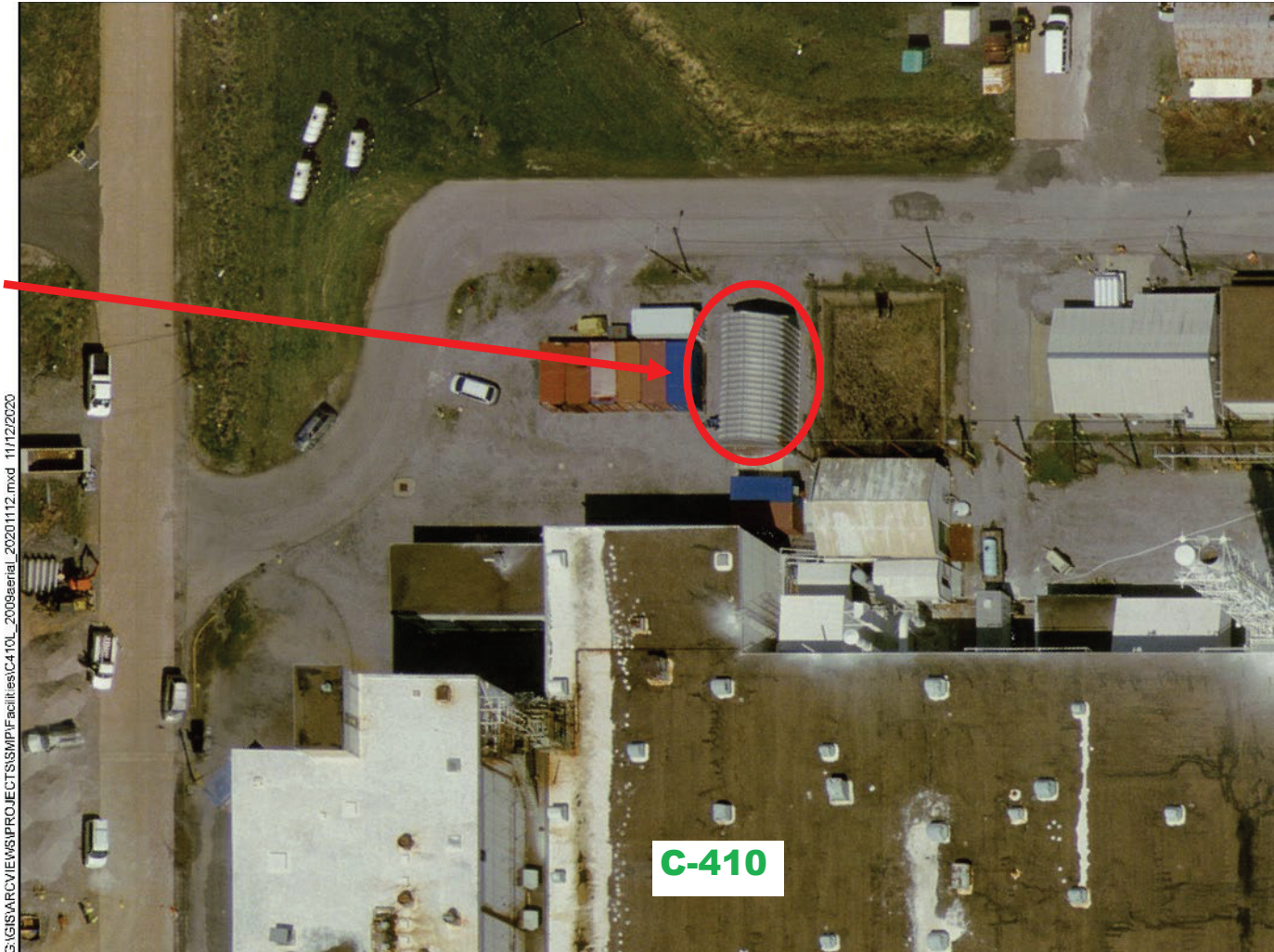
**C-410-L  
Quonset Hut**



Modified Figure from SAR dated July 2001

# C-410-L Quonset Hut (Aerial Photograph)

**C-410-L**



G:\GIS\ARCVIEW\PROJECTS\MP\Facilities\C410L\_2009aerial\_20201112.mxd 11/12/2020

Modified from Aerial Photo: September 29, 2009