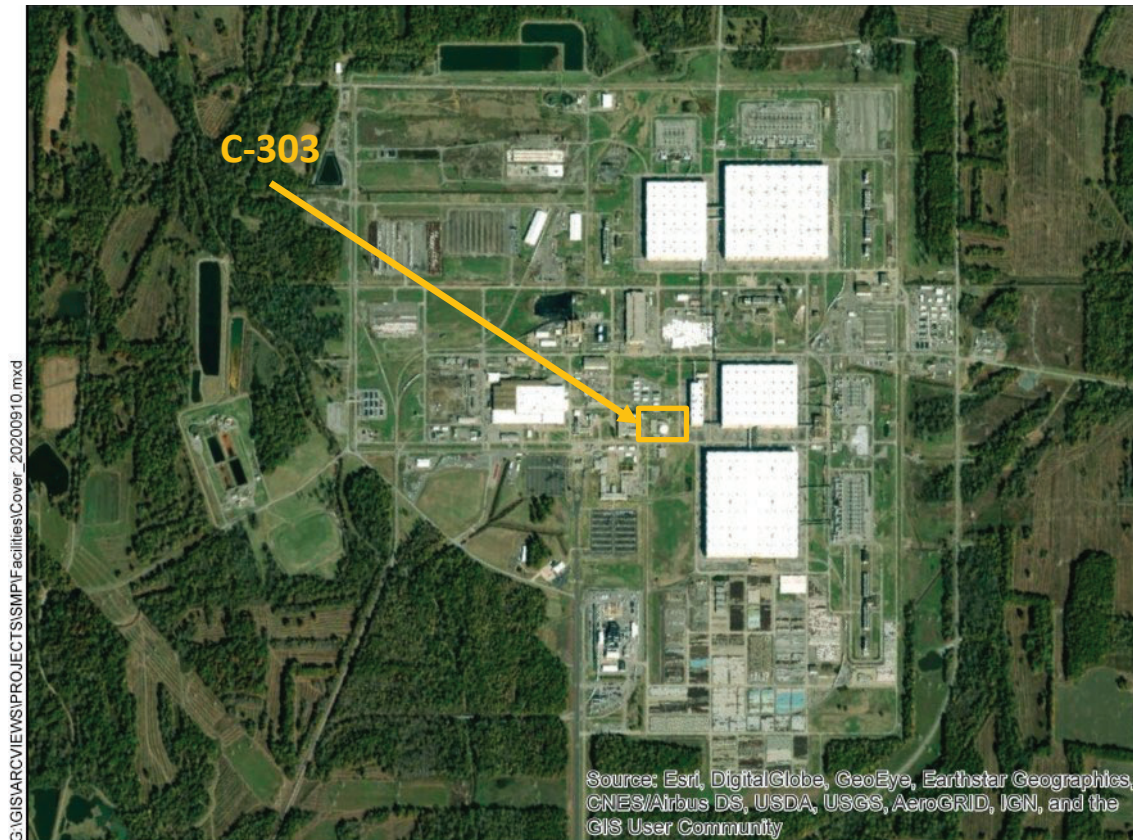


# C-303 Supervisory Control and Data Acquisition System



Facility Overview Briefing

March 4, 2021

Reflects consultation with EPA and Kentucky in accordance with the Site Management Plan that occurred on February 22, 2021.

# Purpose

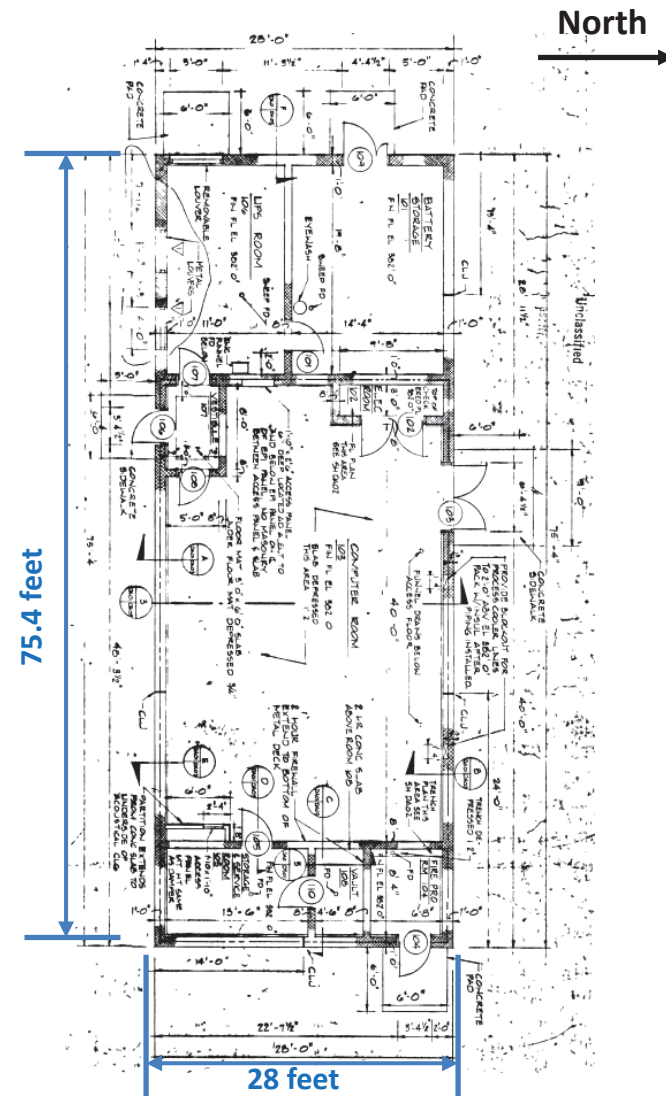
- The C-303 Supervisory Control and Data Acquisition System Facility is a candidate for future demolition and disposal, contingent upon funding priorities.
- Listed in Appendix 6 of the Site Management Plan (SMP); requires consultation with EPA and Kentucky for CERCLA screening prior to demolition.
- This presentation is intended to serve as consultation, providing the basis for demolition and disposal of the aboveground structure outside of the FFA/CERCLA process.
- The remaining slab/soils will be subject to a future CERCLA evaluation under Geographical Area (GA) 15.



C-303 Facility Photo: 8/2020

# Construction History

- C-303 is located within the Paducah Site security fence, north of C-300 Central Control Building and west of C-310.
- Construction was completed in 1982/1983.
- The facility is a one-story rectangular building constructed with unit masonry.
- The facility is approximately 2,100 ft<sup>2</sup>.
  - ❑ Measuring ~75 ft x ~28 ft.



Engineering Drawing: A5E-14805-DA01

# Operational History

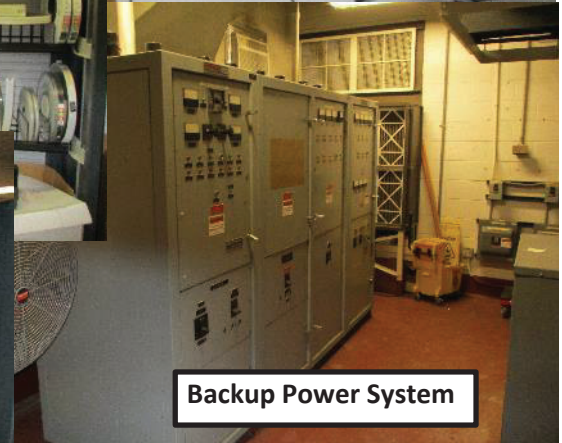
- C-303 has been operated since its initial construction, in conjunction with the C-300, C-302, and C-320 facilities to support the Paducah Site central operations and control function.
  - ❑ Eastern portion of the building houses data acquisition computers and has a halon fire extinguishing system.
  - ❑ Western portion of the building houses electrical switchgear and had a lead-acid batteries bank for backup power; it also has a fire sprinkler system.
- During USEC lease of the facility in the early 1990s, USEC continued to use the facility to support the Paducah Site central operations and control function until USEC ceased operations in 2014.
- C-303 was transitioned from USEC to DOE in 2014 and continues to be operated for its above mentioned purpose.



C-303 Facility Photos: 8/2020

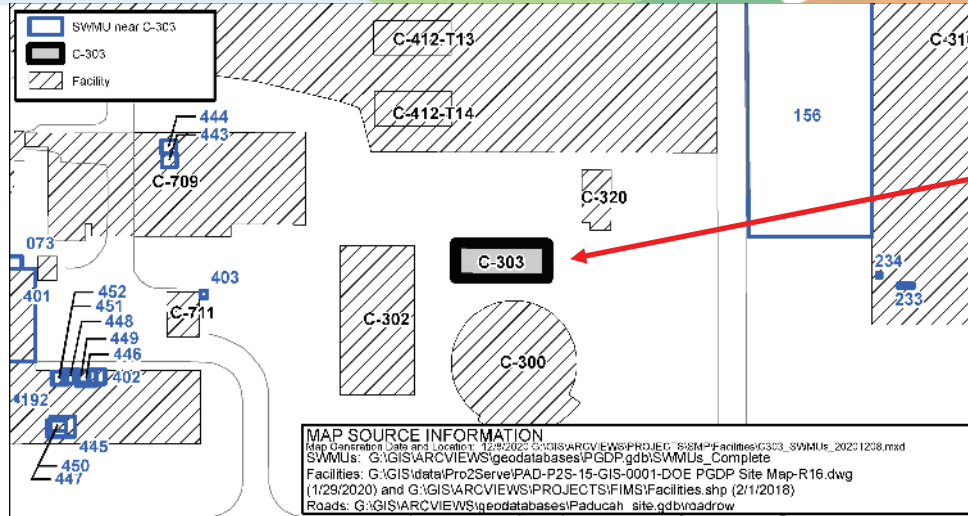
# Current Status

- C-303 is still operational and currently housing the ADT Fire Alarm System.
- Walkdown inspection conducted in October 2020 and employee interviews confirmed no unusual conditions.
  - ❑ Various equipment and data reels associated with the Supervisory Control and Data Acquisition (SCDA) computers.
  - ❑ No floor sumps or basements.
  - ❑ No known chemical spills.
  - ❑ The 125-V DC Battery Bank is shutdown and the lead batteries have been removed.
  - ❑ Flammable storage cabinet with small quantities of chemical products managed in accordance with applicable requirements.



C-303 Photos: 10/2020

# Environmental Impacts (Solid Waste Management Units)



- The C-303 building is not designated as a SWMU/AOC.

SWMU No.	Facility Name	Current Status	NFA Approval By
073	C-710 Underground Gasoline Tanks	NFA	EPA HSWA Class 1 Permit Mod 3/17/1993; KDWM (UST C-200A; UST C-710; UST Branch) 2/19/2002
156	C-310 PCB Soil Contamination (West Side)	Soils Remedial	
192	C-710 Acid Interceptor Pit slab and underlying soils	Soils and Slabs OU	
233	DMSA	RCRA Permit (Non-FFA)	KDWM 2/12/2010
234	DMSA	RCRA Permit (Non-FFA)	KDWM 4/24/2009
401	G-710	NFA	KDWM 1/4/2006
402	G-710-04	NFA	KDWM 9/11/2003
403	G-710-20	NFA	KDWM 1/4/2006
443	S-709-01	NFA	KDWM 6/29/2004
444	S-709-02	NFA	KDWM 6/29/2004
445	S-710-05	NFA	KDWM 2/14/2006
446	S-710-06	NFA	KDWM 9/11/2003
447	S-710-09	NFA	KDWM 1/4/2006
448	S-710-16	NFA	KDWM 9/11/2003
449	S-710-18	NFA	KDWM 9/11/2003
450	S-710-32	NFA	KDWM 1/4/2006
451	S-710-41	NFA	KDWM 9/11/2003
452	S-710-44	NFA	KDWM 1/4/2006

# Environmental Impacts

- No information to indicate a release or threatened release of a hazardous substance that would require an evaluation for a potential response action to protect future public health or welfare or the environment.
  - ❑ C-303 has been used only to support the Paducah Site central operations and control function since its initial construction in the early 1980s.
  - ❑ An asbestos inspection conducted in the early 1990s confirmed no asbestos containing materials used for construction but has the potential to contain lead-based paints. Lead-based paints can be effectively verified during a predemolition inspection and properly managed using standard demolition and waste management practices.
  - ❑ No history or records of chemical use or spills that would pose environmental release threat.

# Conclusion and Recommendations

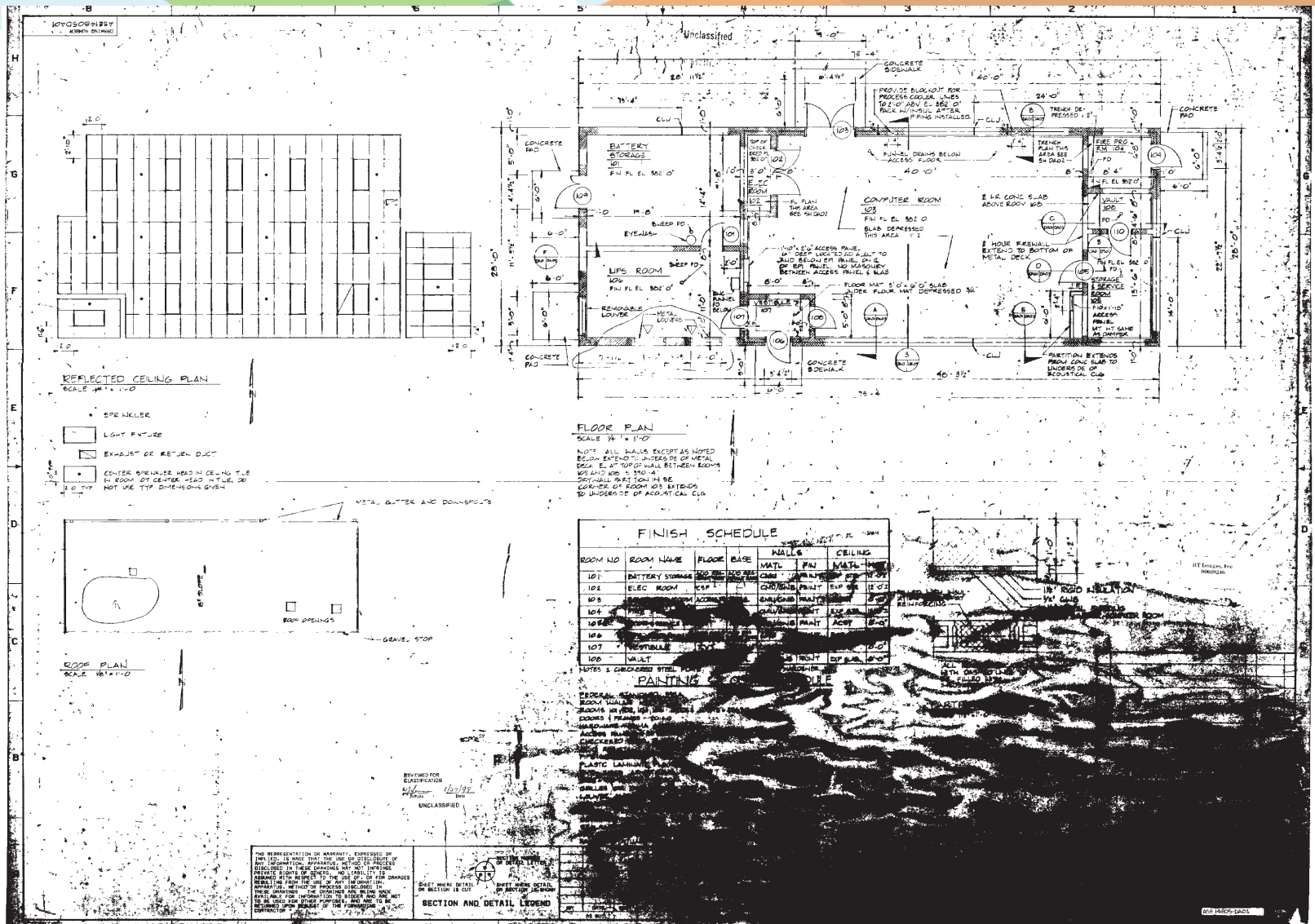
- Walkdown inspection of the facility, employee interviews, and other reviewed historical information did not identify any unusual conditions that would pose a potential threat of environmental release during future demolition of the aboveground structure.
  - ❑ Deactivation will include removal of any accessible loose items being stored, to the extent practicable, prior to demolition.
- Pending ceasing of operation, deactivation, and availability of funding, proceeding with demolition and disposal of C-303 (aboveground structure) outside of the FFA/CERCLA process, contingent upon the fact that no additional changes have occurred that would affect the CERCLA determination of the facility prior to demolition, is recommended.
- All applicable laws, regulations, and DOE procedures/protocols will be followed to ensure the demolition and disposal occurs in a safe, compliant manner, including conducting additional radiological characterization through confirmation radiological surveys (as necessary) to support demolition and waste disposition.
- The removal of the C-303 facility will be documented in the appropriate annual SMP revision.
- The future evaluation conducted for GA 15 will further evaluate the threat of release associated with the slab/soils from the C-303 facility.



# C-303 Supervisory Control and Data Acquisition System

## BACKUP INFORMATION

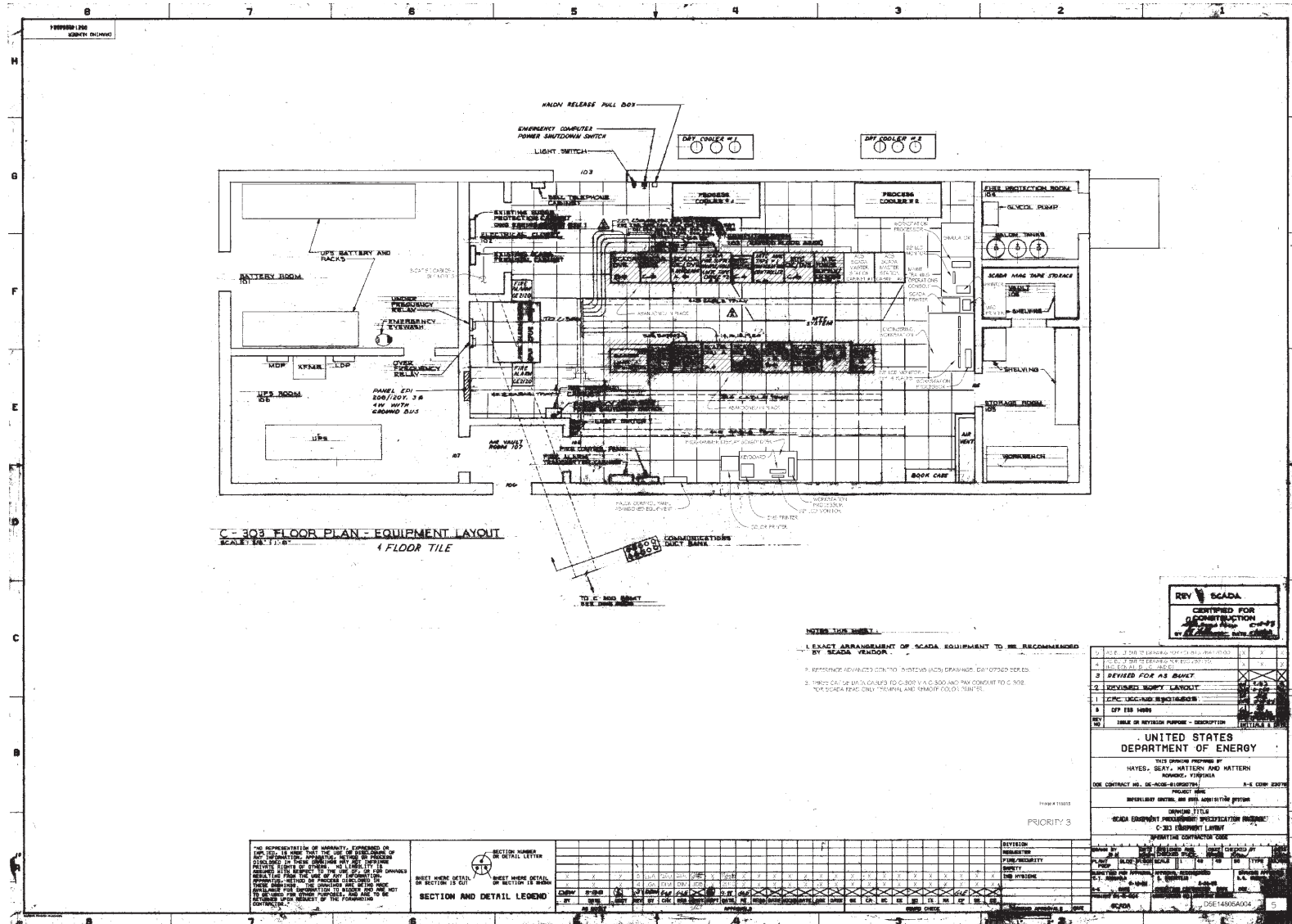
# C-303 Engineering Drawings



A5E-14805-DA01

Best Available Copy

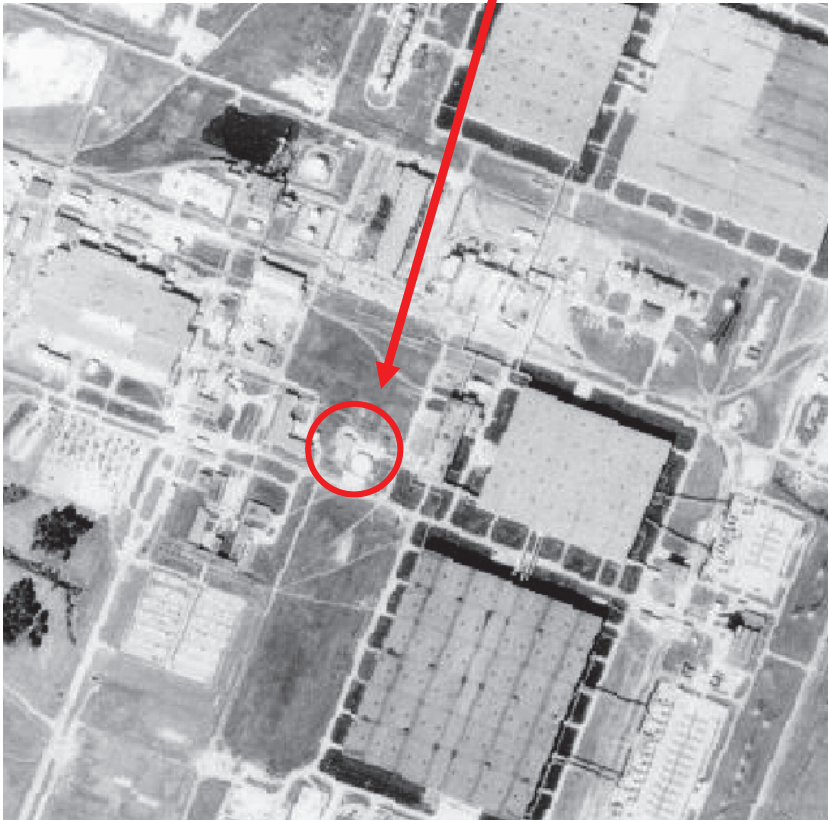
# C-303 Engineering Drawings





# C-303 Aerial Photographs

**C-303 not present  
in 1981 Photo**



Modified from Aerial Photo: 1981

**C-303 is present in  
1983 Photo**



Modified from Aerial Photo: 1983