



Sampling Strategy Plan Sector 1

DRAFT – FOR DISCUSSION ONLY (6/11/2018)

Table of Contents

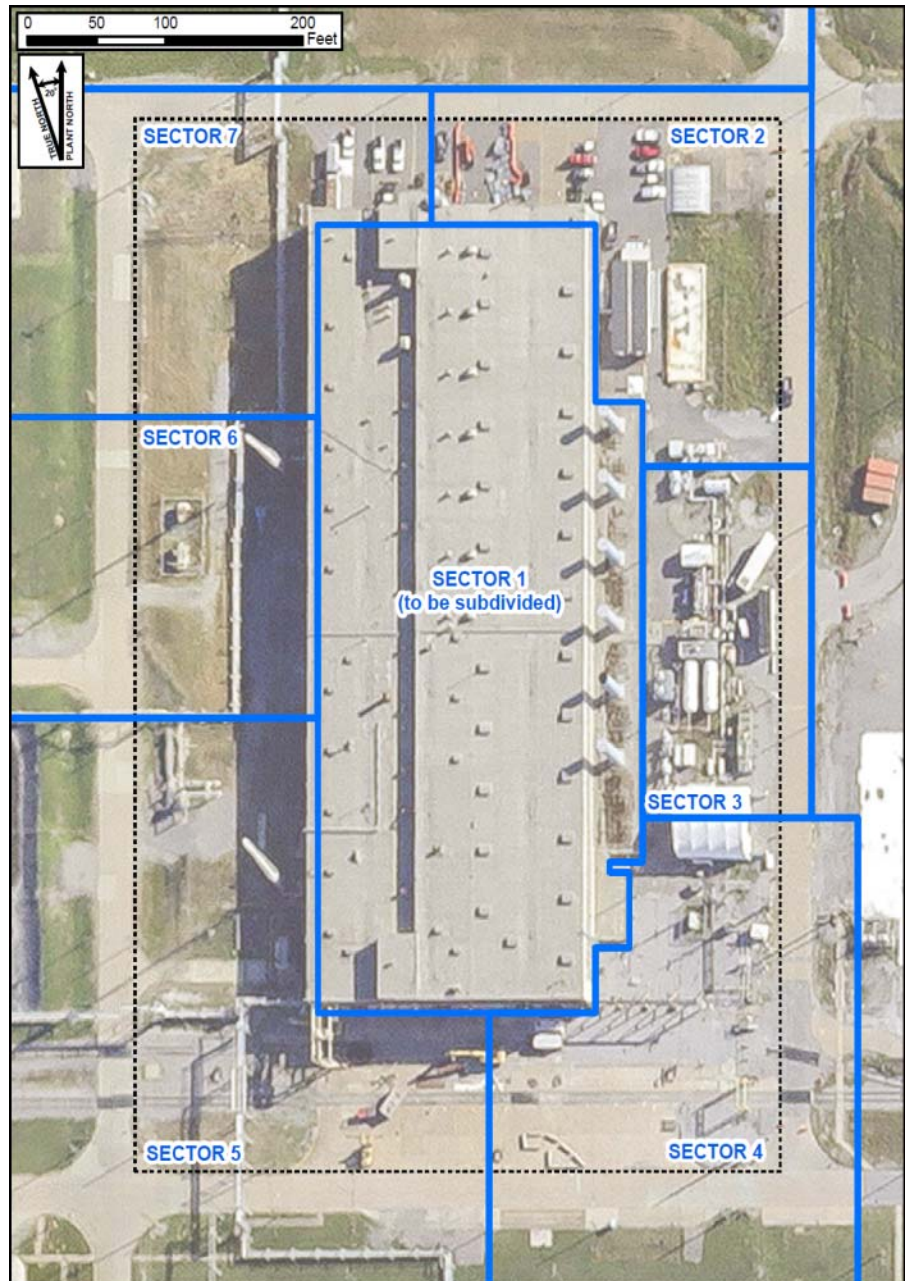
- C-400 Building Introduction
- C-400 Building Background
 - Brief History of Operations
 - Historic Layout
 - Floor Drains and Utilities
 - Process Knowledge
- RI/FS Work Plan Sampling
 - Grade Level Slab & UCRS Sampling Approach
 - Sector 1A
 - Sector 1B
 - Sector 1C
 - Sector 1D
 - RGA/McNairy Sampling Approach
 - Comprehensive C-400 Complex Approach
- Other Sampling (Prior to Flowable Fill)

DRAFT – FOR DISCUSSION ONLY (6/11/2018)



Introduction

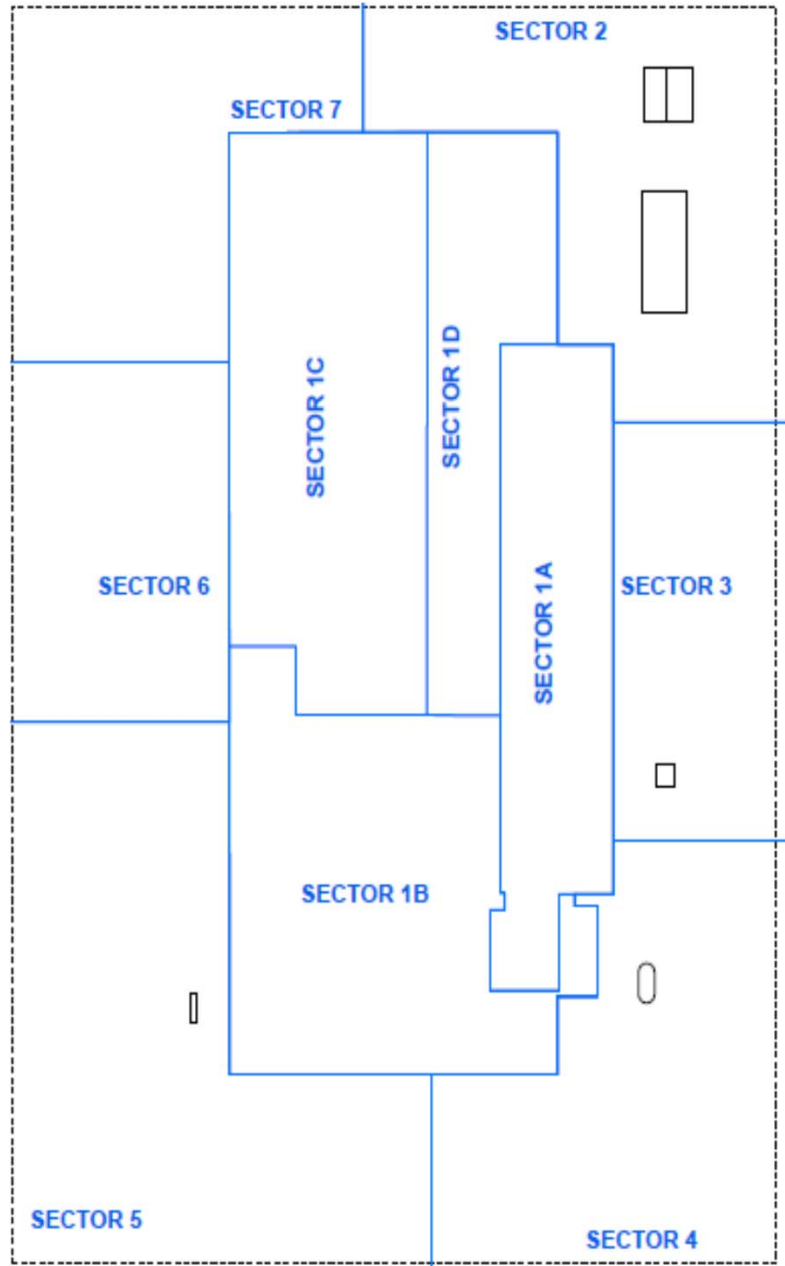
- Sector 1 contains the C-400 building
- Concrete Slab covers the entire Sector 1 Area
- Building Footprint is Approx. 116,000 ft²
- Based on the area of the building, Sector 1 has been subdivided into four subsections to facilitate these scoping discussions



DRAFT – FOR DISCUSSION ONLY (6/11/2018)



Subdivision of Sector #1



DRAFT – FOR DISCUSSION ONLY (6/11/2018)



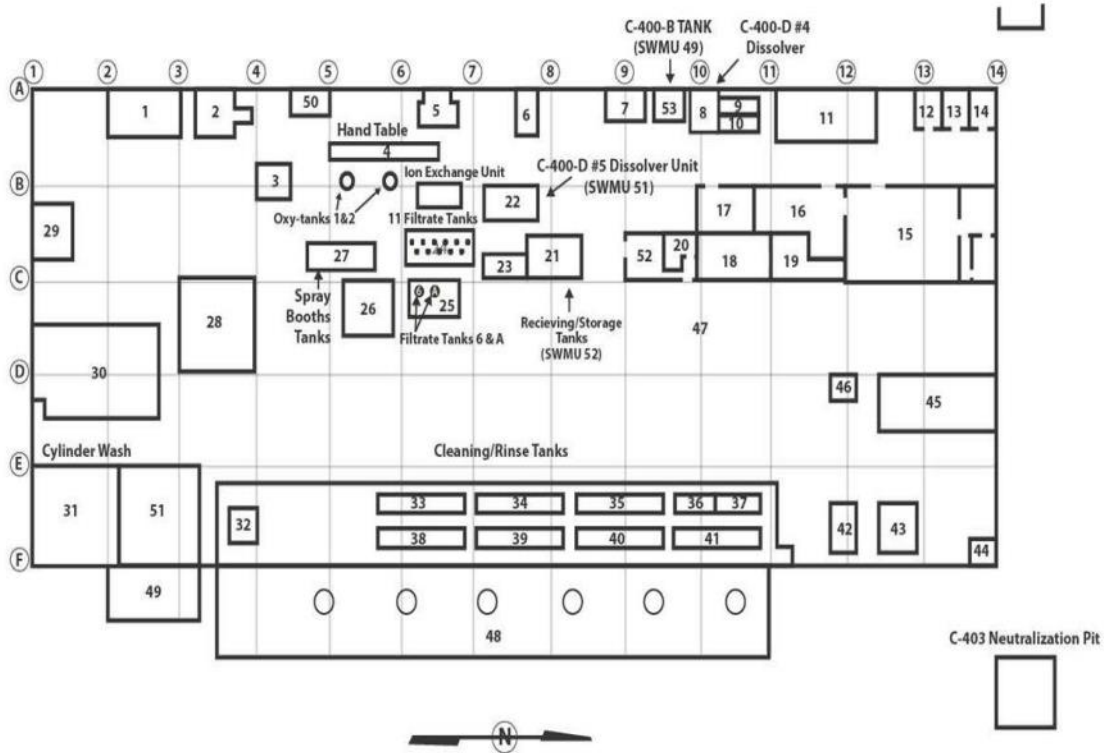
Brief History of Operations

- Building operated from 1952 until 2014
 - Cleaning and decontamination of components, chemical treatment, pulverizing UF₄, recovery systems, UF₆ cylinder recertification
 - Housed other processes, including Cascade Test Loop, maintenance disassembly areas, plant laundry, respirators, anti-C clothing

DRAFT – FOR DISCUSSION ONLY (6/11/2018)



Historical Layout

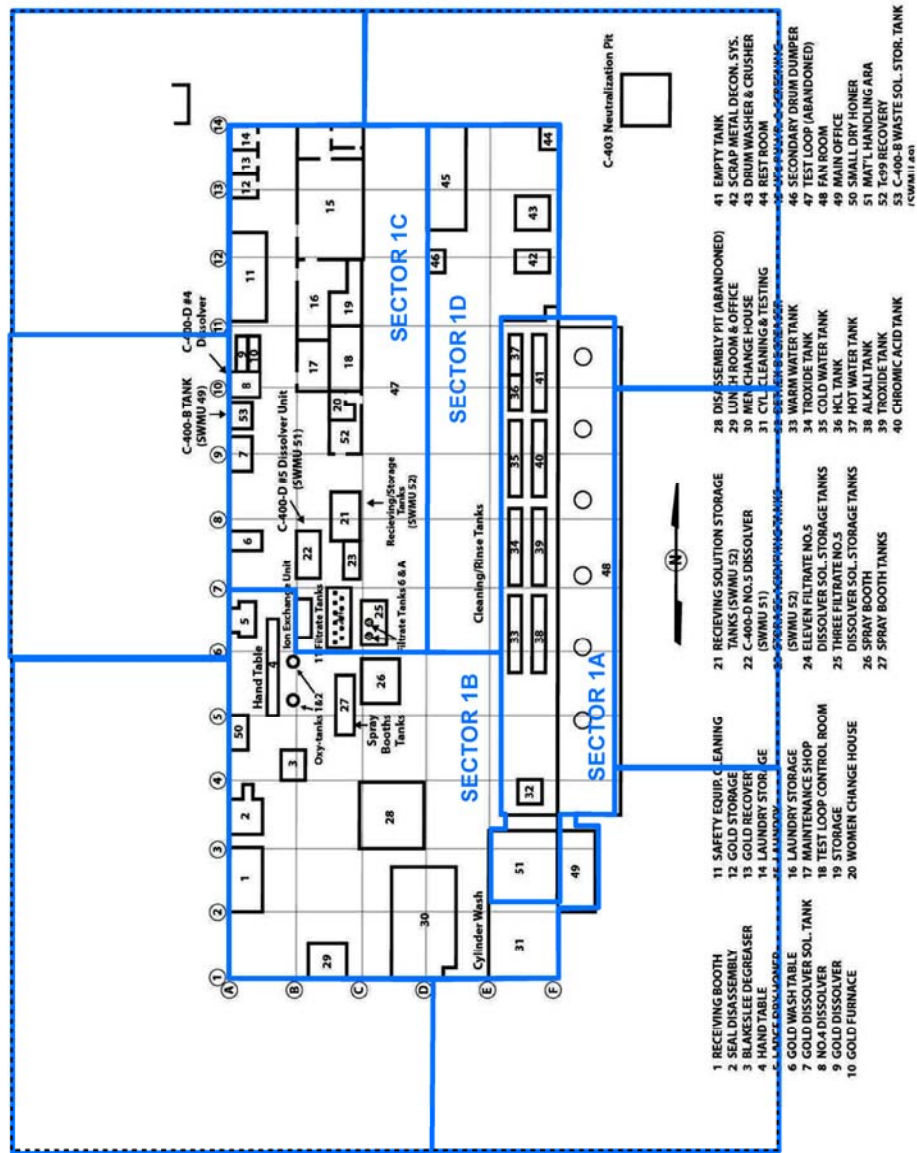


- | | | | | |
|----------------------------|---------------------------|--|--------------------------------|---|
| 1 RECEIVING BOOTH | 11 SAFETY EQUIP. CLEANING | 21 RECIEVING SOLUTION STORAGE TANKS (SWMU 52) | 28 DISASSEMBLY PIT (ABANDONED) | 41 EMPTY TANK |
| 2 SEAL DISASSEMBLY | 12 GOLD STORAGE | 22 C-400-D NO.5 DISSOLVER (SWMU 51) | 29 LUNCH ROOM & OFFICE | 42 SCRAP METAL DECON. SYS. |
| 3 BLAKESLEE DEGREASER | 13 GOLD RECOVERY | 23 STORAGE ACIDIFYING TANKS (SWMU 52) | 30 MEN CHANGE HOUSE | 43 DRUM WASHER & CRUSHER |
| 4 HAND TABLE | 14 LAUNDRY STORAGE | 24 ELEVEN FILTRATE NO.5 DISSOLVER SOL. STORAGE TANKS | 31 CYL. CLEANING & TESTING | 44 REST ROOM |
| 5 LARGE DRY HONER | 15 LAUNDRY | 25 THREE FILTRATE NO.5 DISSOLVER SOL. STORAGE TANKS | 32 DETREX DEGREASER | 45 UF6 PULVR. & SCREENING |
| 6 GOLD WASH TABLE | 16 LAUNDRY STORAGE | 26 SPRAY BOOTH | 33 WARM WATER TANK | 46 SECONDARY DRUM DUMPER |
| 7 GOLD DISSOLVER SOL. TANK | 17 MAINTENANCE SHOP | 27 SPRAY BOOTH TANKS | 34 TROXIDE TANK | 47 TEST LOOP (ABANDONED) |
| 8 NO.4 DISSOLVER | 18 TEST LOOP CONTROL ROOM | | 35 COLD WATER TANK | 48 FAN ROOM |
| 9 GOLD DISSOLVER | 19 STORAGE | | 36 HCL TANK | 49 MAIN OFFICE |
| 10 GOLD FURNACE | 20 WOMEN CHANGE HOUSE | | 37 HOT WATER TANK | 50 SMALL DRY HONER |
| | | | 38 ALKALI TANK | 51 MAT'L HANDLING ARA |
| | | | 39 TROXIDE TANK | 52 Tc99 RECOVERY |
| | | | 40 CHROMIC ACID TANK | 53 C-400-B WASTE SOL. STOR. TANK (SWMU 120) |

DRAFT – FOR DISCUSSION ONLY (6/11/2018)



Historical Layout (with Sector 1 Subdivided)

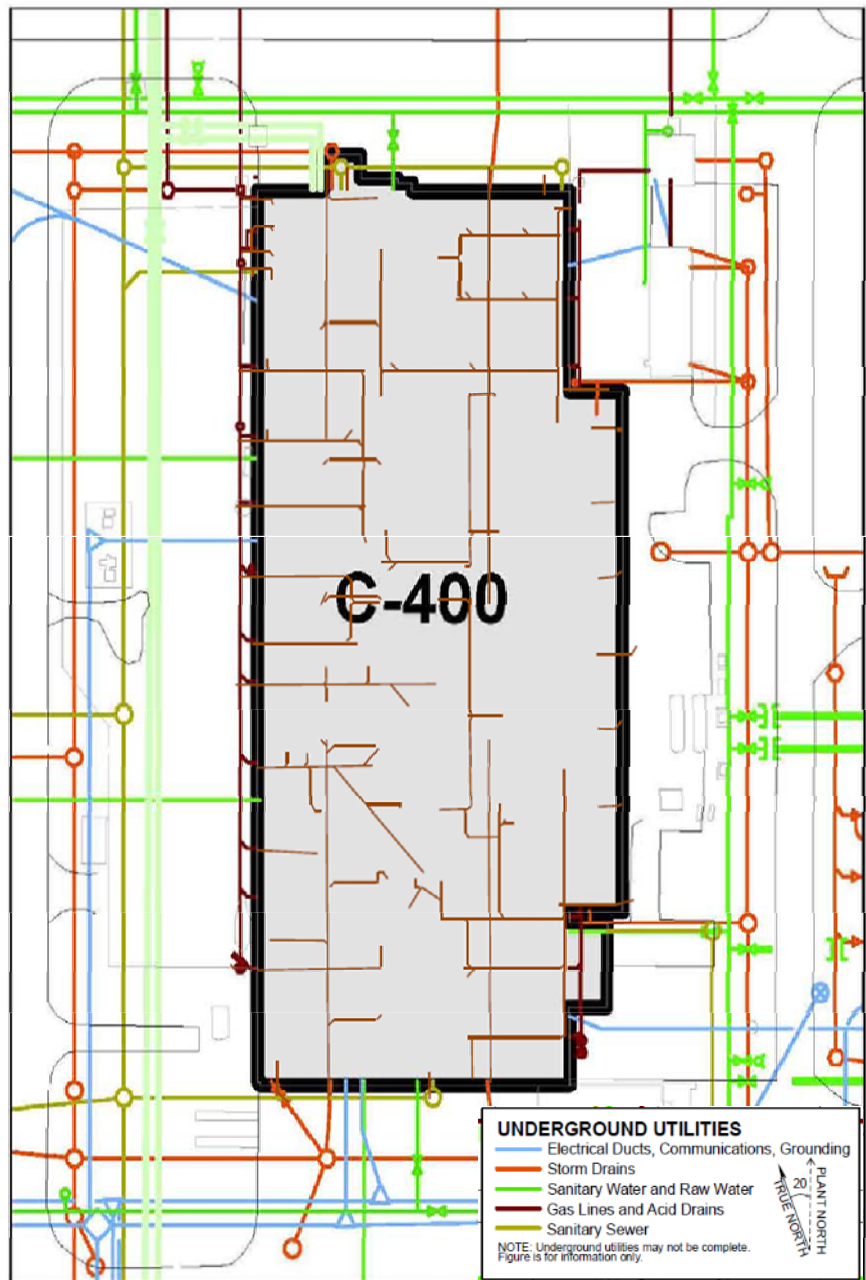


DRAFT – FOR DISCUSSION ONLY (6/11/2018)



Floor Drains and Utilities

- C-400 Building contains an extensive floor drainage system, serving as potential release pathways beneath the building.
- During initial construction of the C-400 Building, gravel fill (~10 ft) was used as the base, potentially creating a permeable zone for contaminant migration.



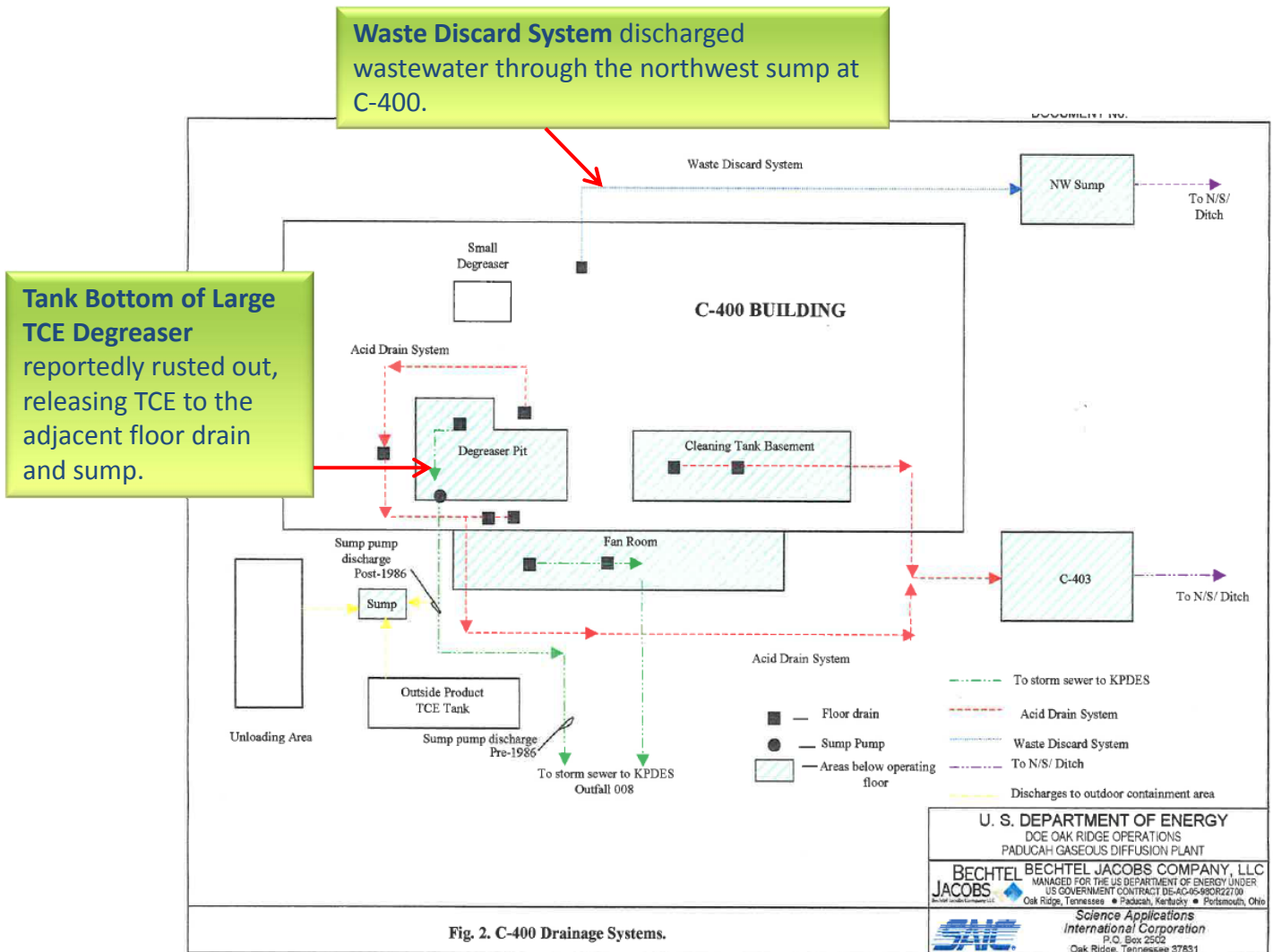
Adapted from Figure 6 of the D1 C-400 Vapor Intrusion Work Plan, April 2016

DRAFT – FOR DISCUSSION ONLY (6/11/2018)



Process Knowledge

Conceptual illustration not scale



Adapted from Figure 2 of the Process Knowledge Review of Historic Discharges to the North-South Diversion Ditch – December 18, 2001

DRAFT – FOR DISCUSSION ONLY (6/11/2018)

