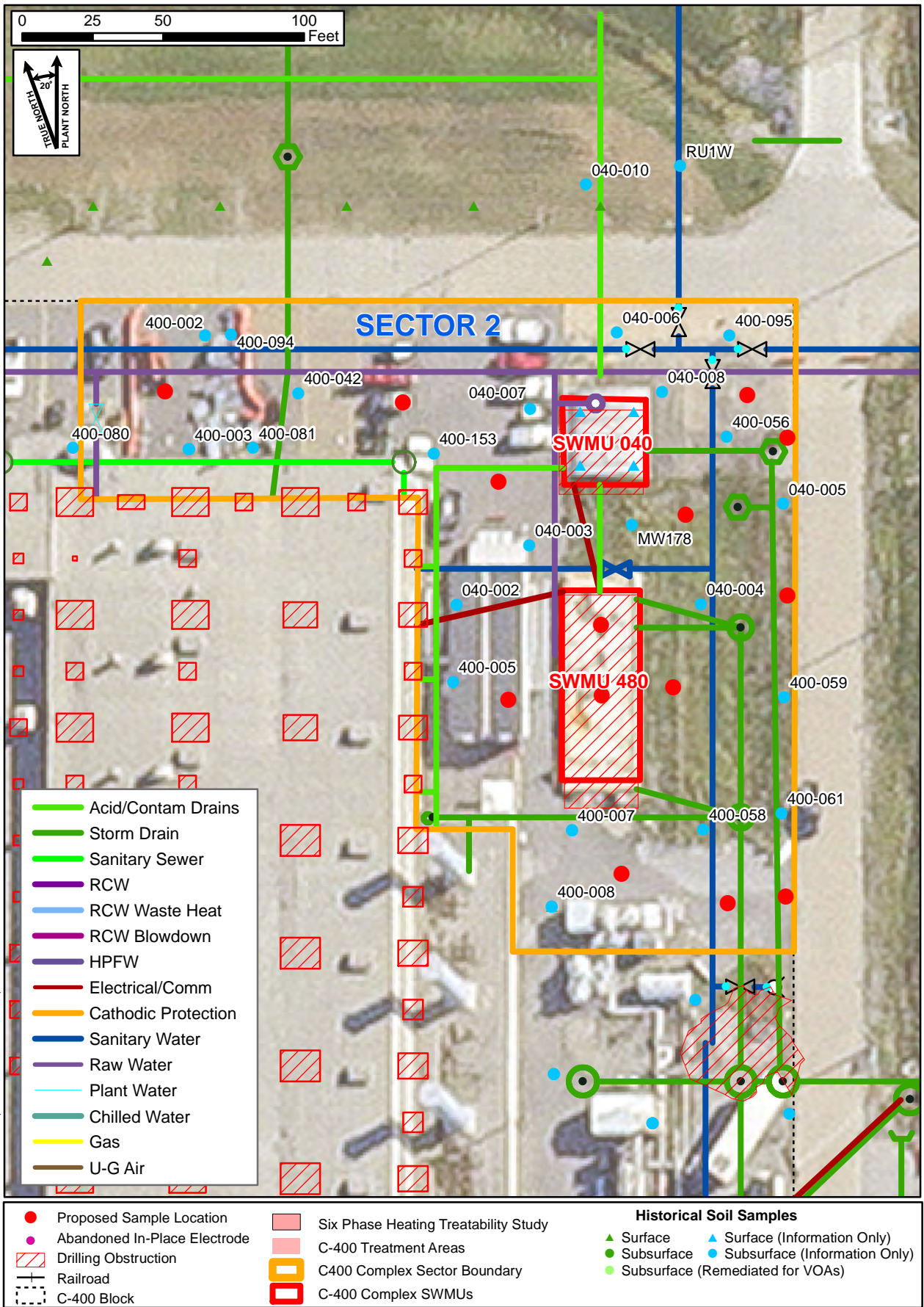


S:\Env Services\Environmental Stewardship\ERP - Risk\GIS\C400Complex_Combined Sector Sampling.mxd 5/17/2018

- | | | |
|----------------------------|--|------------------------------------|
| ● Proposed Sample Location | ■ Six Phase Heating Treatability Study | Historical Soil Samples |
| ▨ Drilling Obstruction | ■ C-400 Treatment Areas | ▲ Surface |
| —+— Railroad | ■ C400 Complex Sector Boundary | ● Subsurface |
| - - - C-400 Block | ■ C-400 Complex SWMUs | ● Subsurface (Remediated for VOAs) |



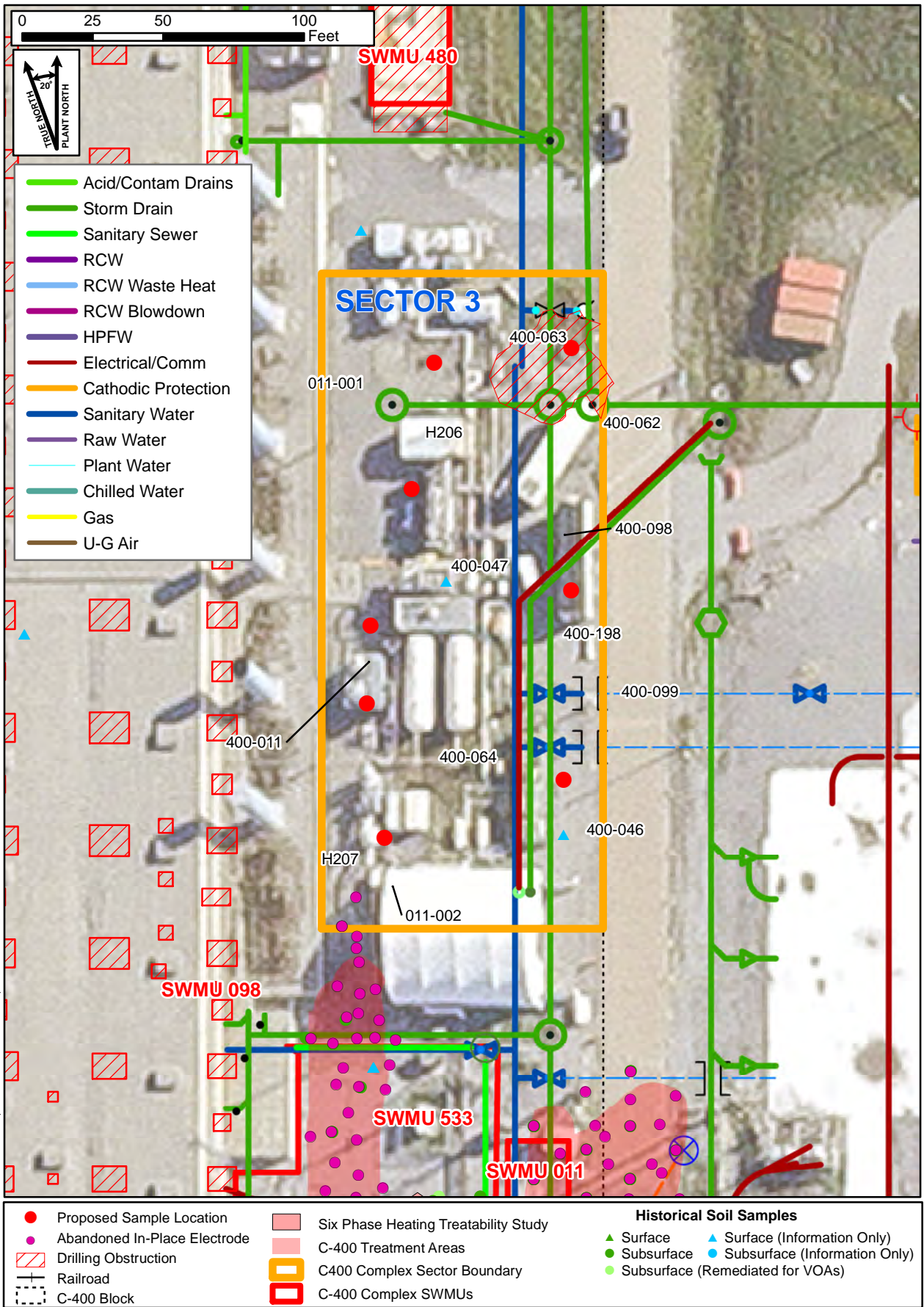
S:\Env Services\Environmental Stewardship\ERP - Risk\GIS\C400Complex_Interactive_sector2.mxd 5/17/2018

- Acid/Contam Drains
- Storm Drain
- Sanitary Sewer
- RCW
- RCW Waste Heat
- RCW Blowdown
- HPFW
- Electrical/Comm
- Cathodic Protection
- Sanitary Water
- Raw Water
- Plant Water
- Chilled Water
- Gas
- U-G Air

- Proposed Sample Location
- Abandoned In-Place Electrode
- Drilling Obstruction
- Railroad
- C-400 Block

- Six Phase Heating Treatability Study
- C-400 Treatment Areas
- C400 Complex Sector Boundary
- C-400 Complex SWMUs

- Historical Soil Samples**
- ▲ Surface
 - Subsurface
 - ▲ Surface (Information Only)
 - Subsurface (Information Only)
 - Subsurface (Remediated for VOAs)



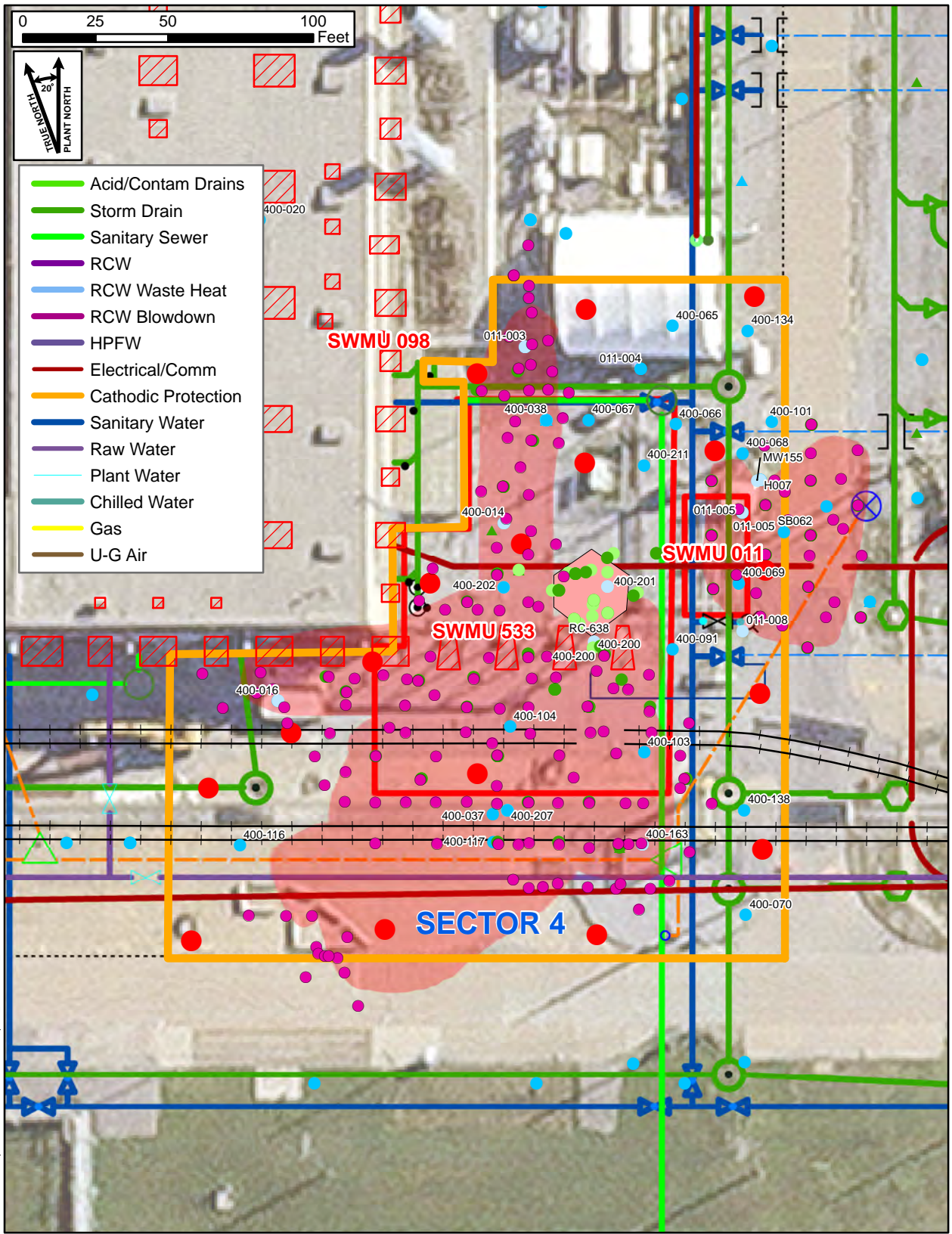
- Acid/Contam Drains
- Storm Drain
- Sanitary Sewer
- RCW
- RCW Waste Heat
- RCW Blowdown
- HPFW
- Electrical/Comm
- Cathodic Protection
- Sanitary Water
- Raw Water
- Plant Water
- Chilled Water
- Gas
- U-G Air

- Proposed Sample Location
- Abandoned In-Place Electrode
- Drilling Obstruction
- + Railroad
- C-400 Block

- Six Phase Heating Treatability Study
- C-400 Treatment Areas
- C400 Complex Sector Boundary
- C-400 Complex SWMUs

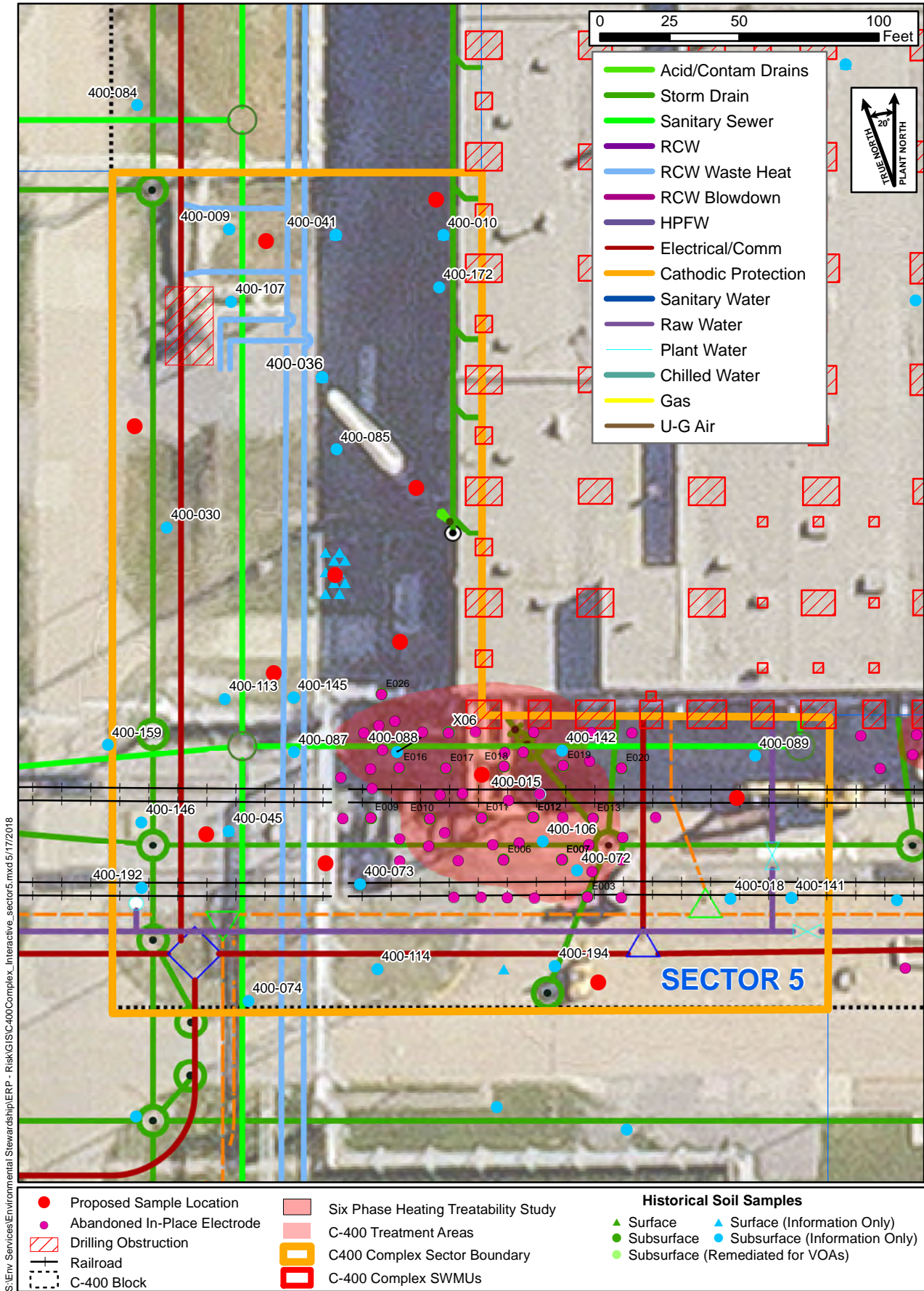
- Historical Soil Samples**
- ▲ Surface
 - ▲ Surface (Information Only)
 - Subsurface
 - Subsurface (Information Only)
 - Subsurface (Remediated for VOAs)

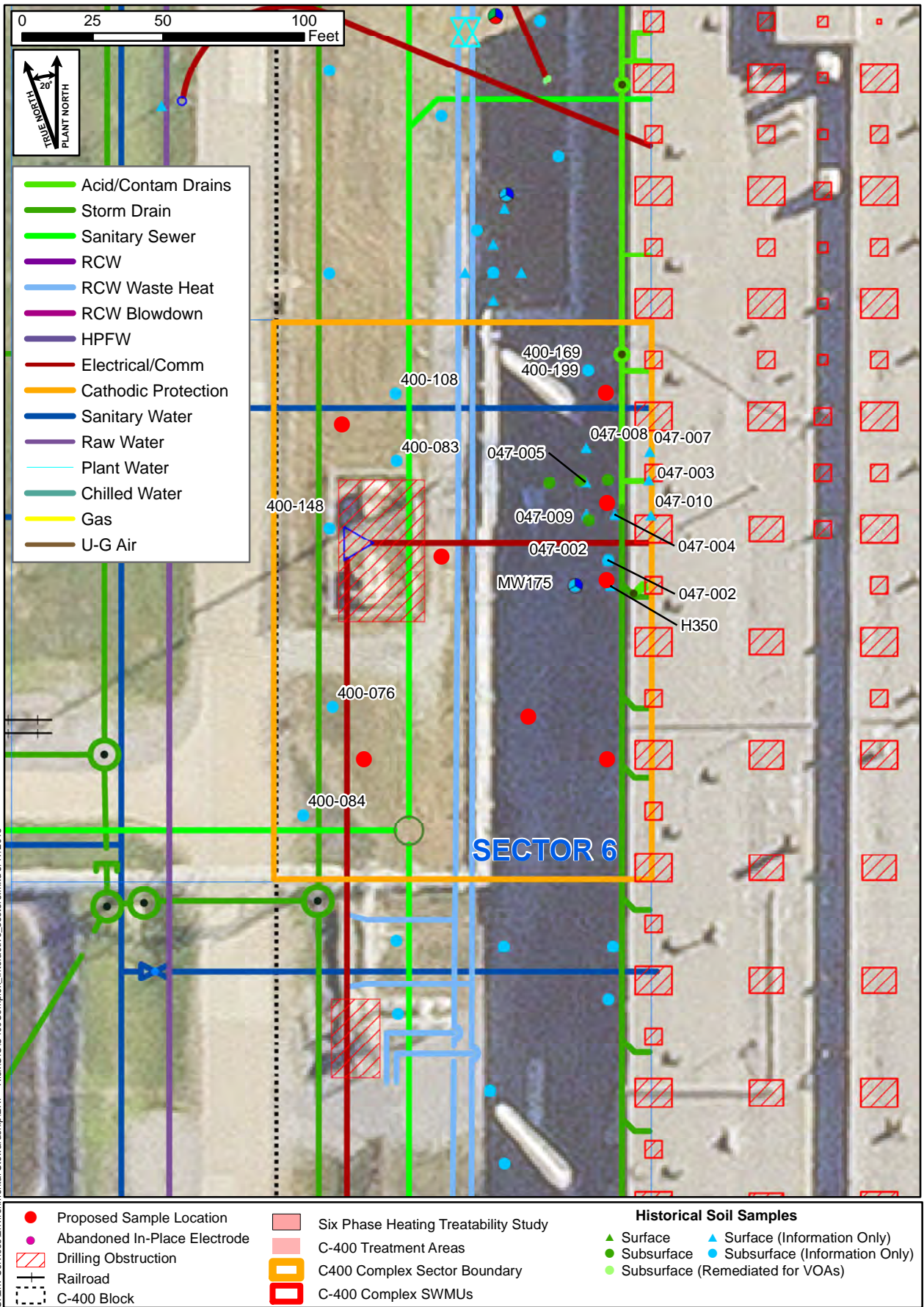
S:\Env Services\Environmental Stewardship\ERP - Risk\GIS\C400Complex_Interactive_sector3.mxd 5/17/2018

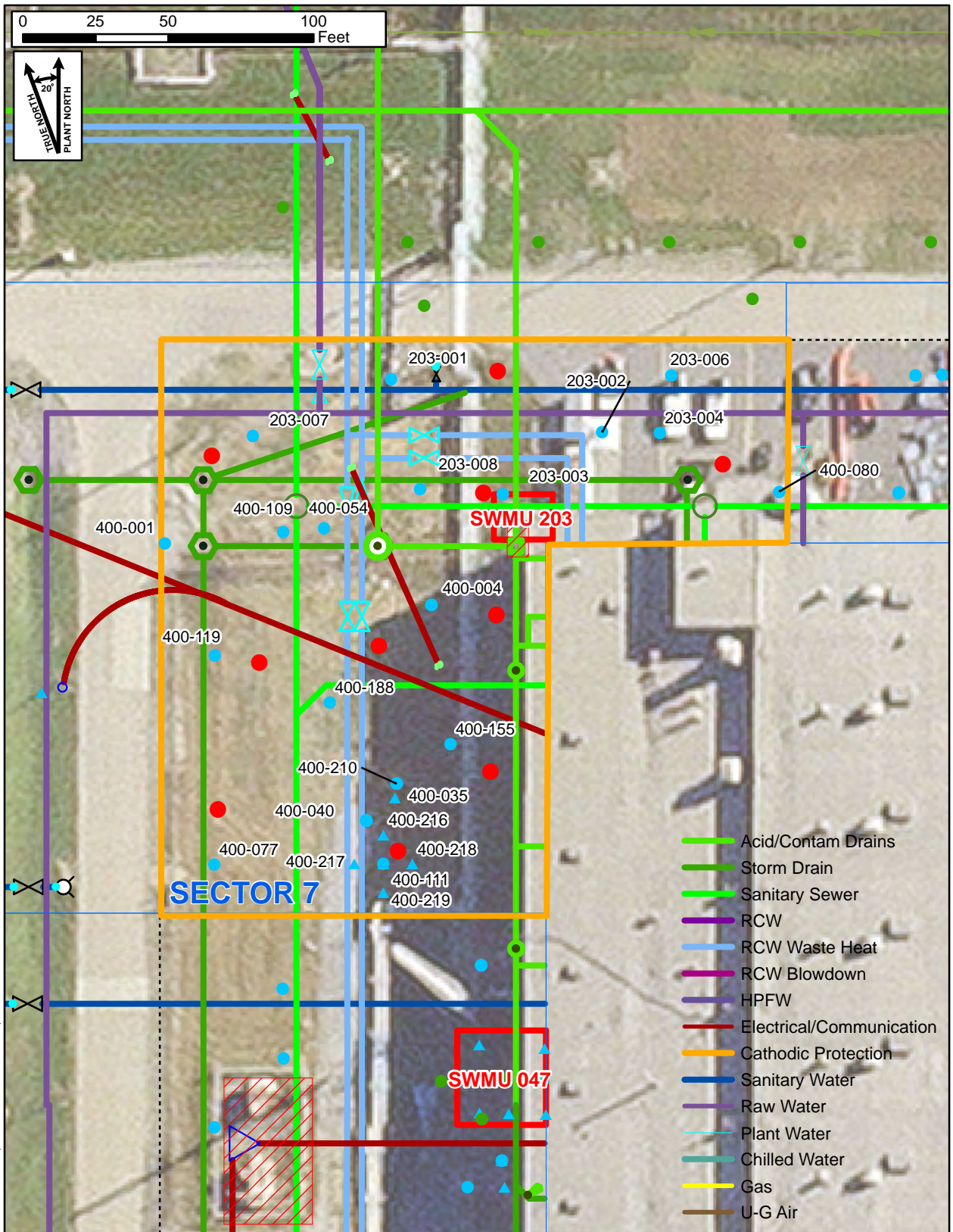


S:\Env_Services\Environmental Stewardship\ERP - Risk\GIS\C400Complex_Interactive_sector4.r.mxd 5/17/2018

- | | | |
|--------------------------------|--|---|
| ● Proposed Sample Location | ■ Six Phase Heating Treatability Study | Historical Soil Samples |
| ● Abandoned In-Place Electrode | ■ C-400 Treatment Areas | ▲ Surface ▲ Surface (Information Only) |
| ▨ Drilling Obstruction | ■ C400 Complex Sector Boundary | ● Subsurface ● Subsurface (Information Only) |
| ⊕ Railroad | ■ C-400 Complex SWMUs | ● Subsurface (Remediated for VOAs) |
| ⊖ C-400 Block | | |







S:\Enw Services\Environmental Stewardship\ERP - Risk\GIS\C400Complex_Interactive_sector7.mxd 6/17/2018

● Proposed Sample Location	■ Six Phase Heating Treatability Study	▲ Surface	▲ Surface (Information Only)
● Abandoned In-Place Electrode	■ C-400 Treatment Areas	● Subsurface	● Subsurface (Information Only)
▨ Drilling Obstruction	■ C400 Complex Sector Boundary	● Subsurface (Remediated for VOAs)	
⊕ Railroad	■ C-400 Complex SWMUs		
⊖ C-400 Block			