

Fig. 3.7. Regional stratigraphy for PGDP area.

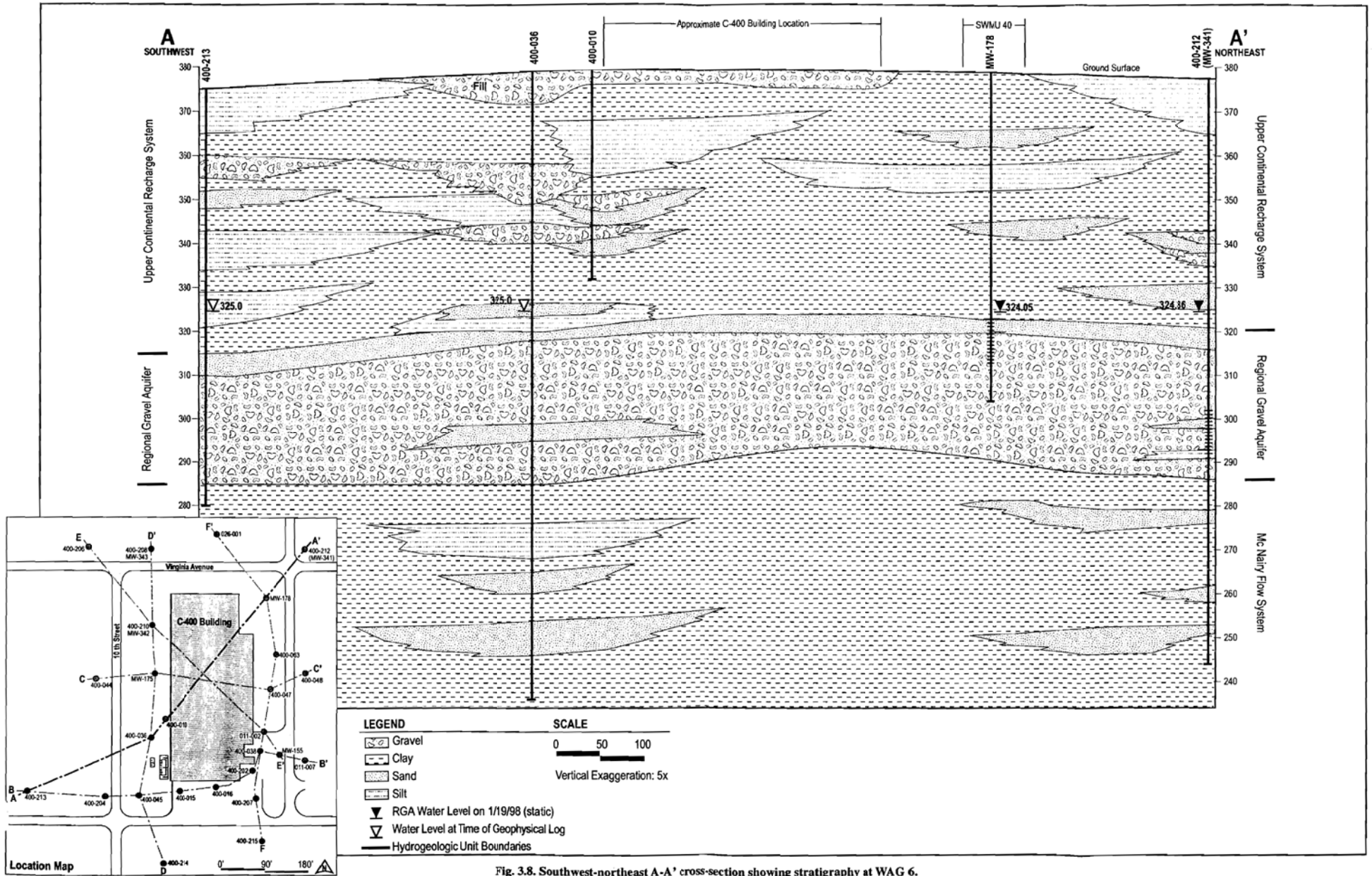


Fig. 3.8. Southwest-northeast A-A' cross-section showing stratigraphy at WAG 6.

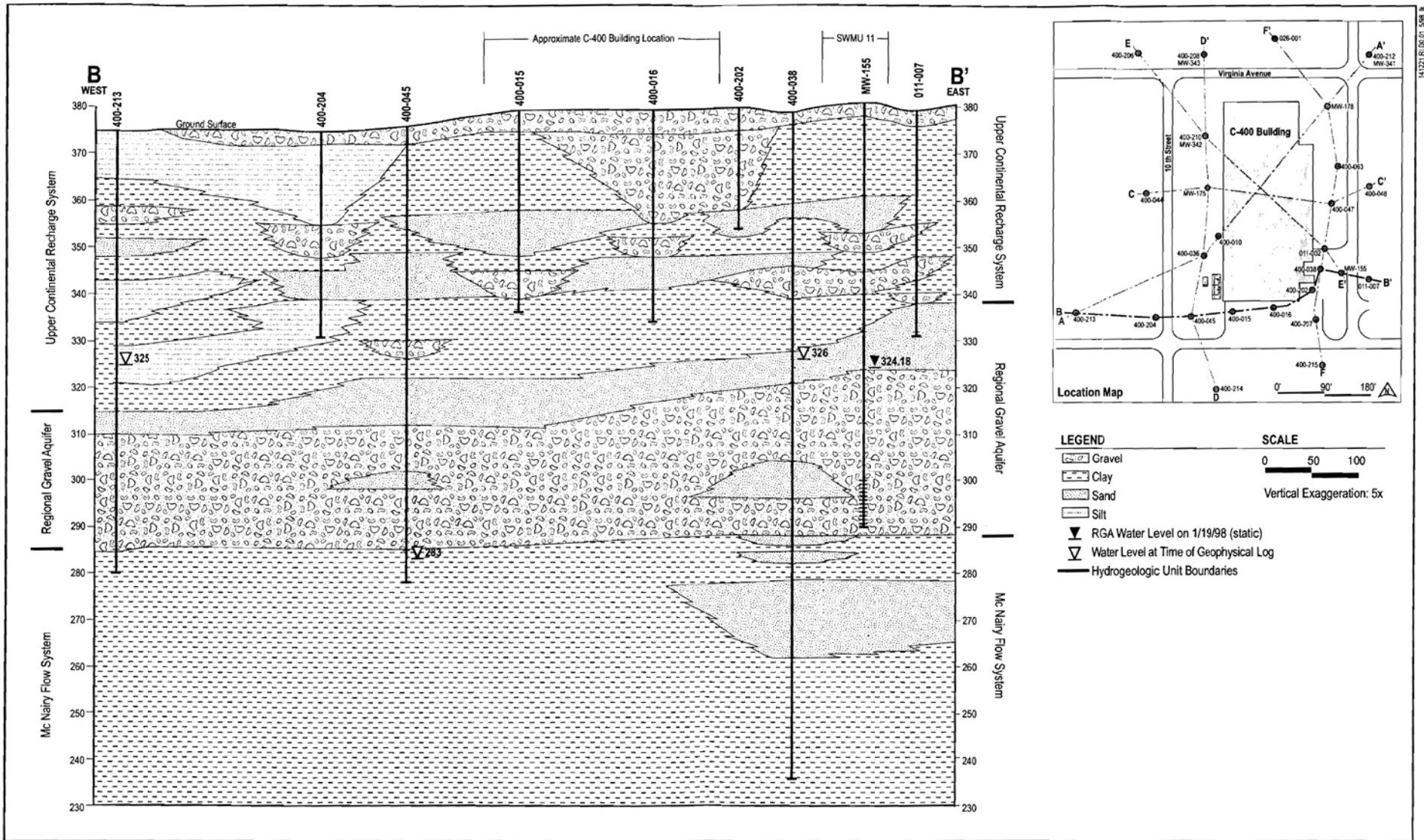


Fig. 3.9. East-west B-B' cross-section showing stratigraphy at WAG 6.

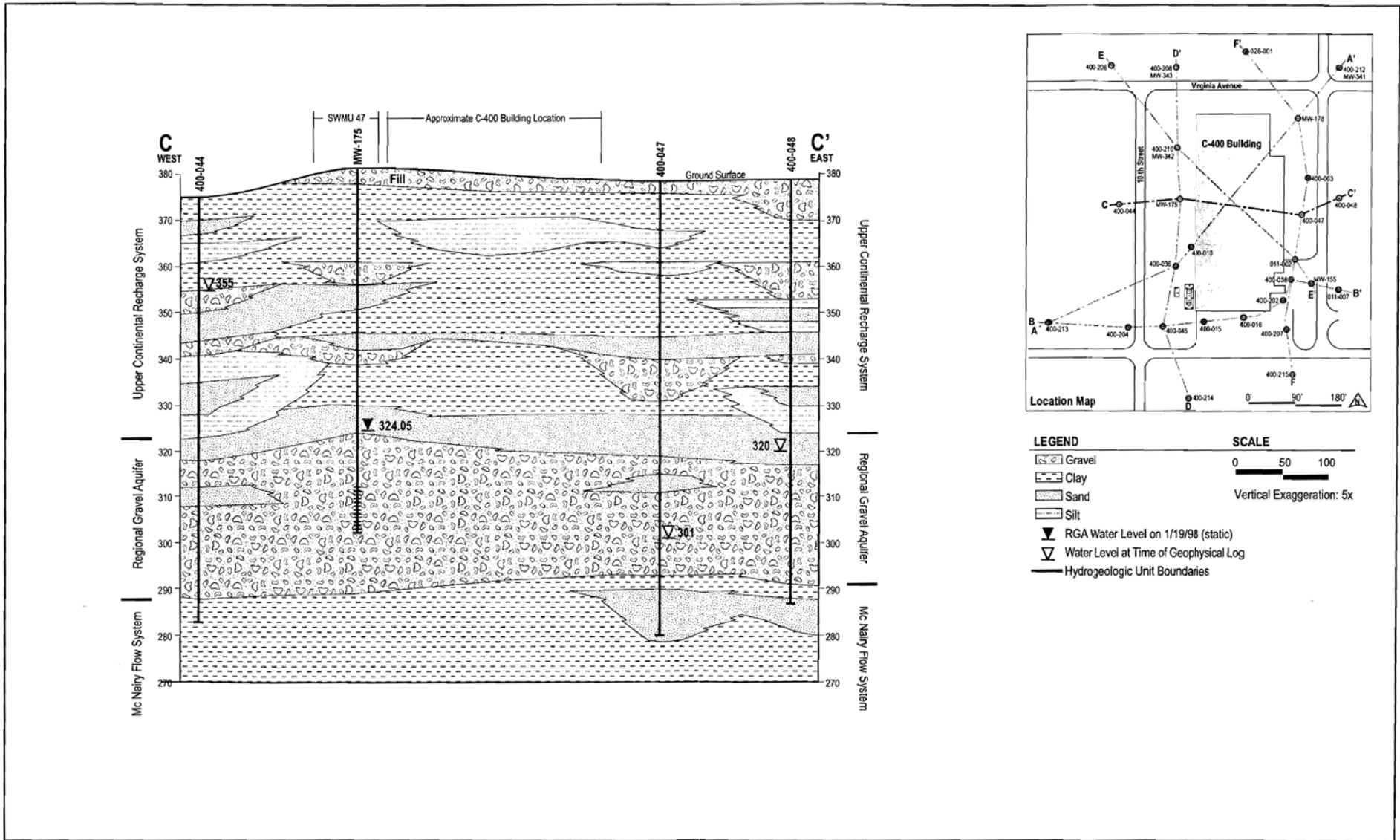


Fig. 3.10. East-west C-C' cross-section showing stratigraphy at WAG 6.

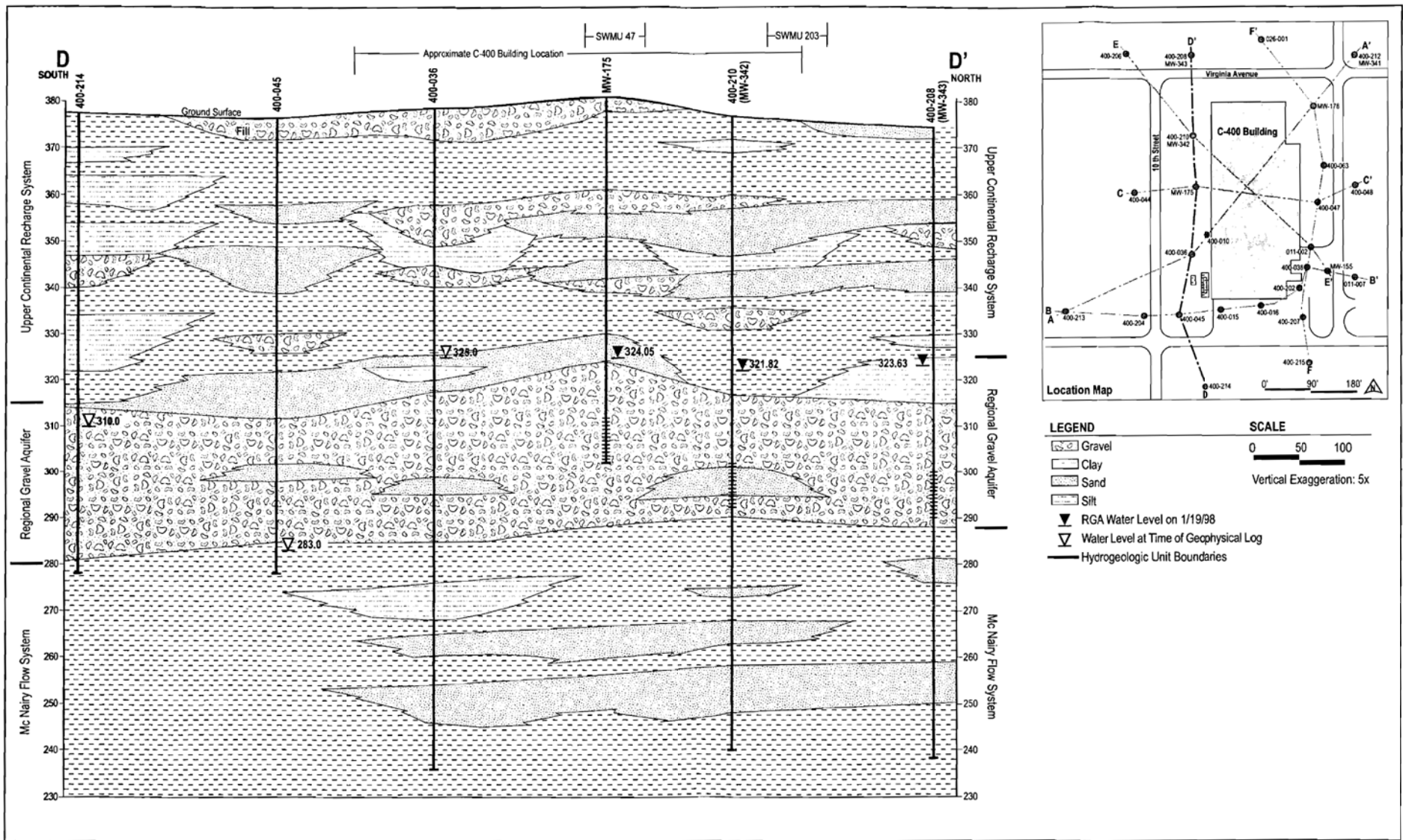


Fig. 3.11. North-south D-D' cross-section showing stratigraphy at WAG 6.

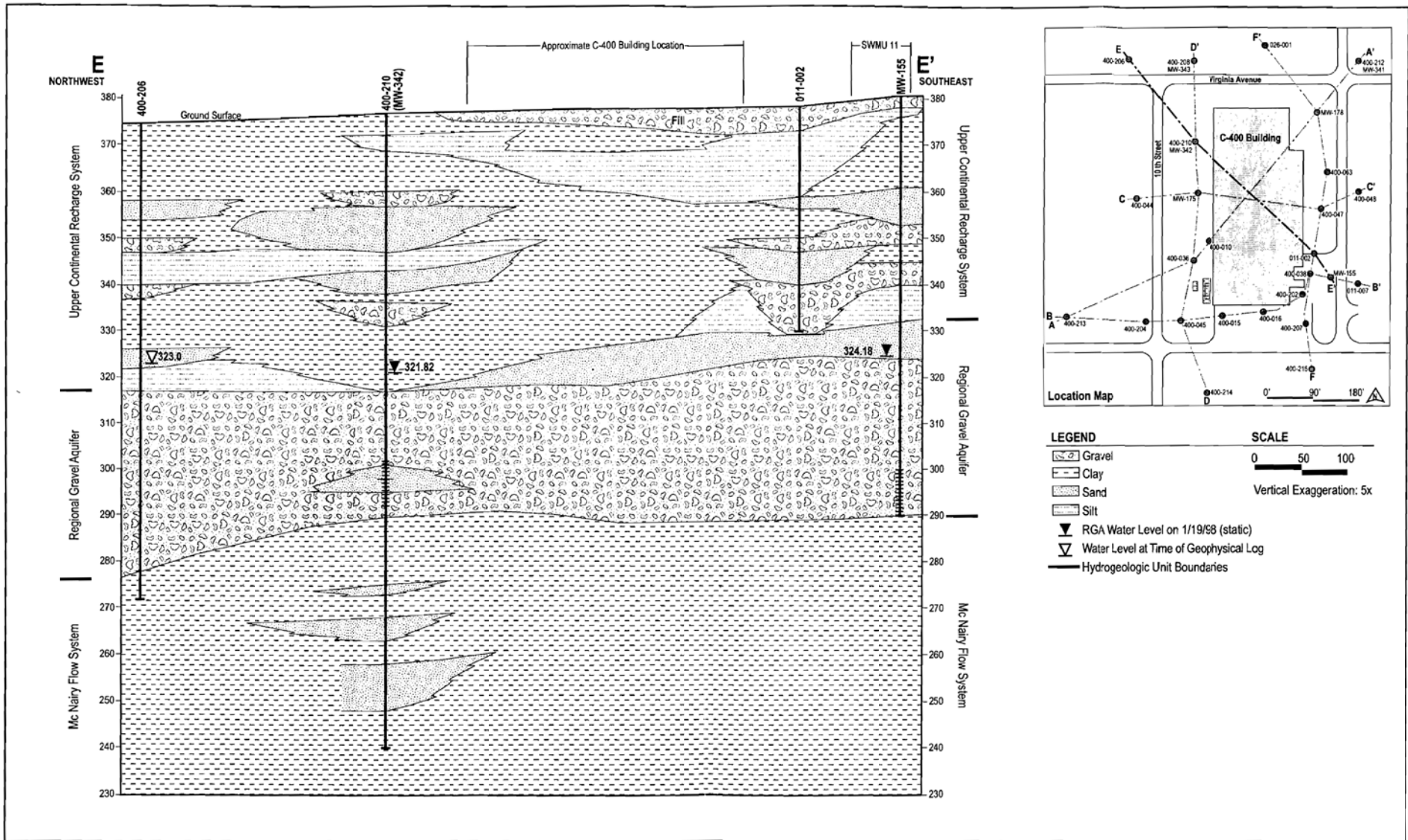


Fig. 3.12. Northwest-southeast E-E' cross-section showing stratigraphy at WAG 6.

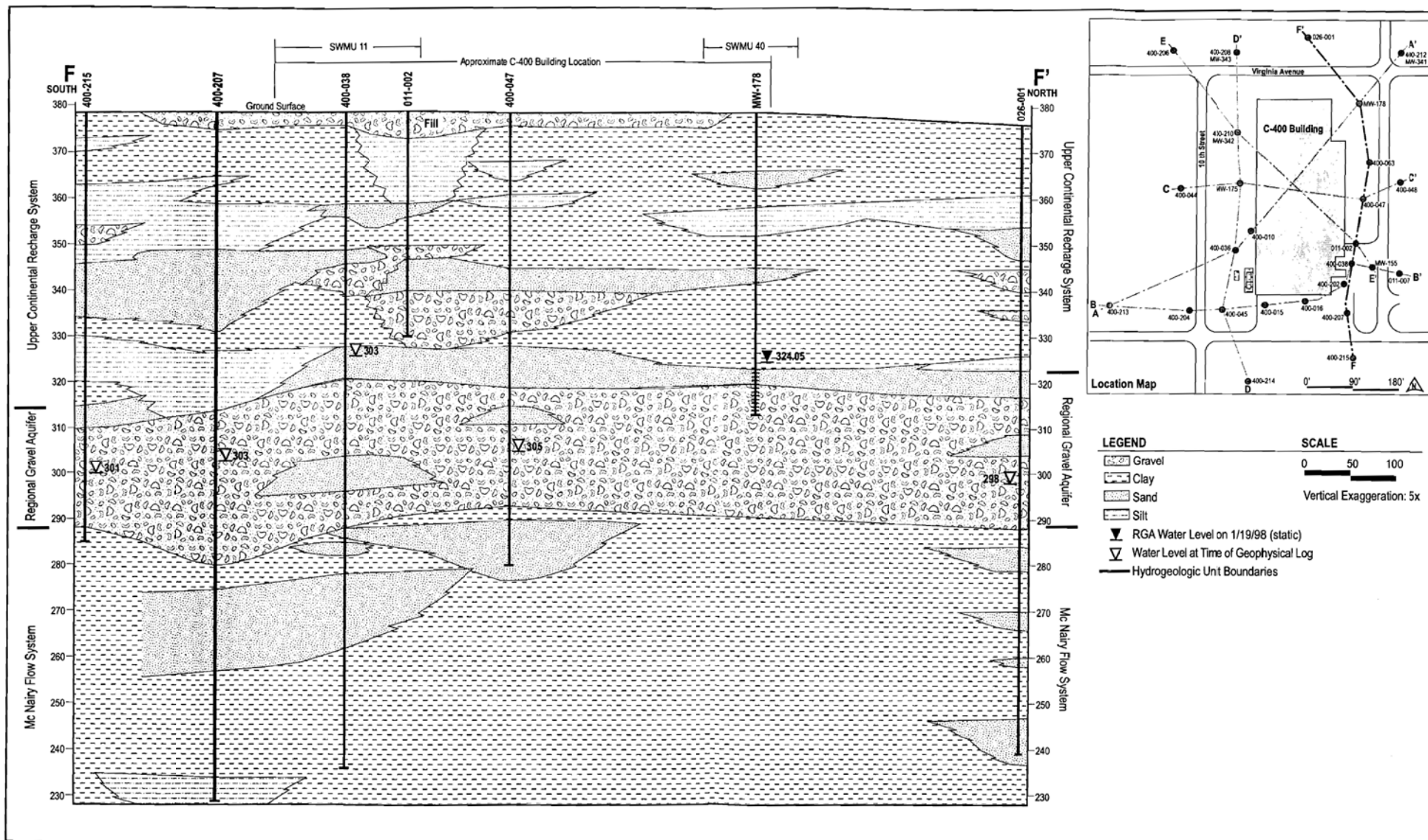


Fig. 3.13. North-south F-F' cross-section showing stratigraphy at WAG 6.