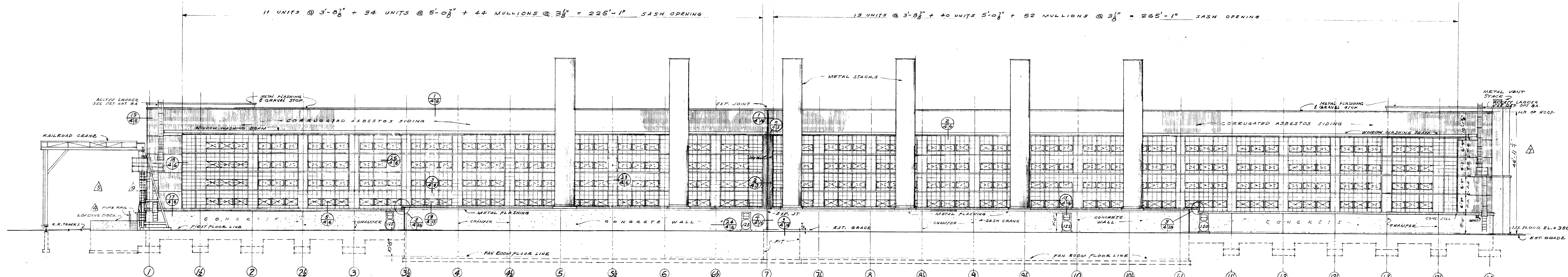


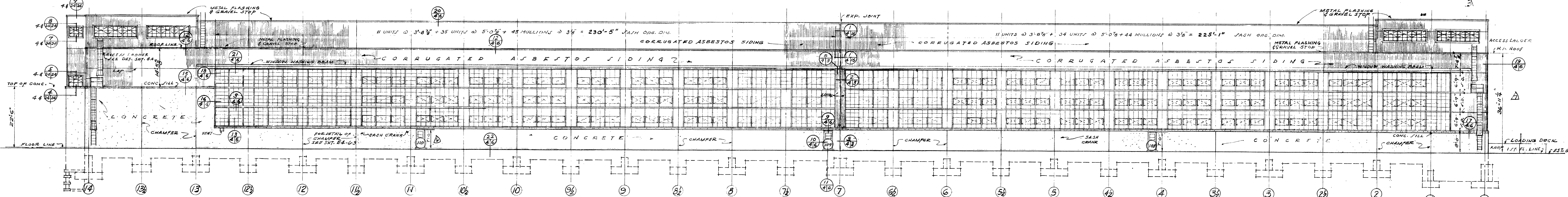
Unclassified



EAST ELEVATION

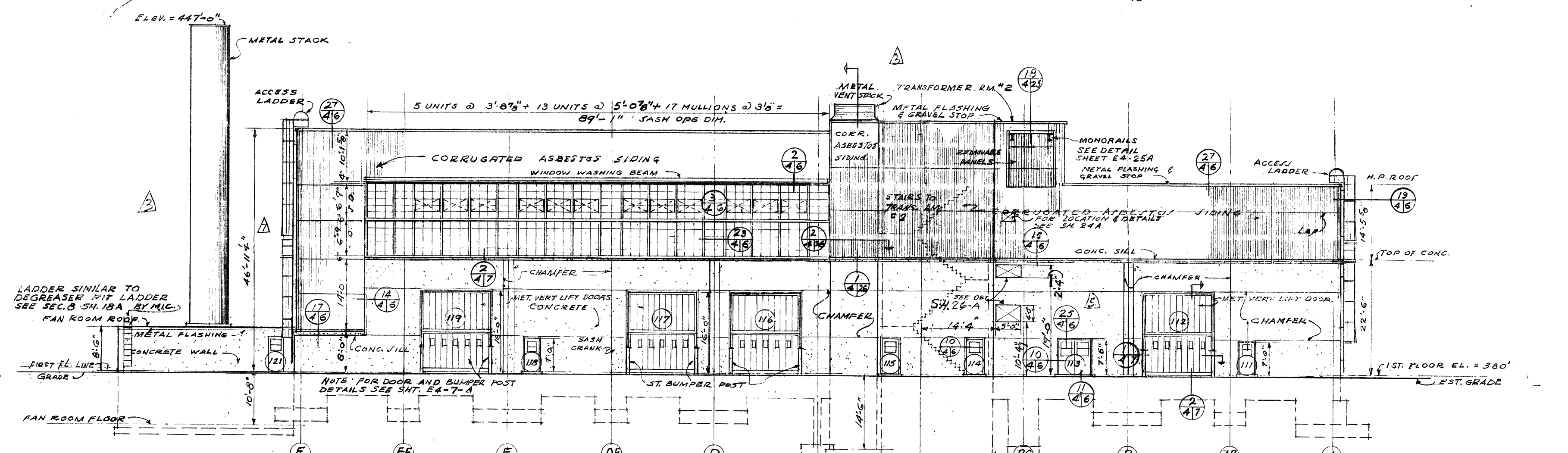
SCALE 1/16" = 1'-0"

NOTE FOR DETAILS OF PAN ROOM, FLASHING, STACK BASE AND PIT. DETAILS SEE SHTS 4E-14, 15A & 16A



WEST ELEVATION

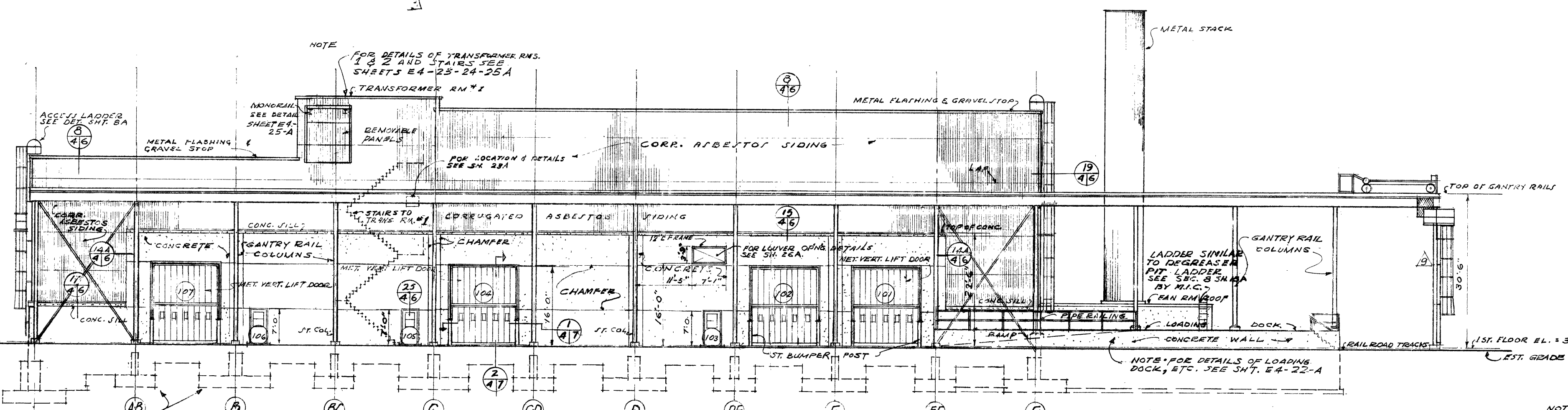
SCALE 1/16" = 1'-0"



NORTH ELEVATION

SCALE 1/16" = 1'-0"

NOTE: VERIFY SIZE & LOCATION OF ALL OPENINGS IN EXTERIOR WALLS WITH MECH. PLANS & MECH. CONTR.



SOUTH ELEVATION

SCALE 1/16" = 1'-0"

NOTE FOR DETAILS OF TRANSFORMER RAIL. SEE SHETS E4-23, 24, 25 & 26A

NOTE FOR DETAILS OF TRANSFORMER RAIL. SEE SHETS E4-23, 24, 25 & 26A

NOTE FOR CONCRETE WALL AND COLUMN FOOTING SIZES, DEPTH BELOW GRADE, ELEVATIONS AT BOTTOM ON ALL BLDG. ELEVATIONS SEE SHTS 4E-6, 7, 8, 9, 10, 11, 12, 13, 14, 15, 16, 17, 18, 19, 20, 21, 22, 23, 24, 25, 26, 27, 28, 29, 30, 31, 32, 33, 34, 35, 36, 37, 38, 39, 40, 41, 42, 43, 44, 45, 46, 47, 48, 49, 50, 51, 52, 53, 54, 55, 56, 57, 58, 59, 60, 61, 62, 63, 64, 65, 66, 67, 68, 69, 70, 71, 72, 73, 74, 75, 76, 77, 78, 79, 80, 81, 82, 83, 84, 85, 86, 87, 88, 89, 90, 91, 92, 93, 94, 95, 96, 97, 98, 99, 100

Classification Changed to UNCLASSIFIED
(Insert Appropriate Classification Level and Category) (E-00)
By Authority of DOE DOE Letter # 10-001
(Authority for Change of Classification)
By William J. G. [Signature] 3/26/98
(Signature of Person Making Change)
Verified by William J. G. [Signature]
(Signature of Person Verifying Change)

DEPARTMENT OF ENERGY DECLASSIFICATION REVIEW

1ST REVIEWER	DATE	2ND REVIEWER	DATE
...

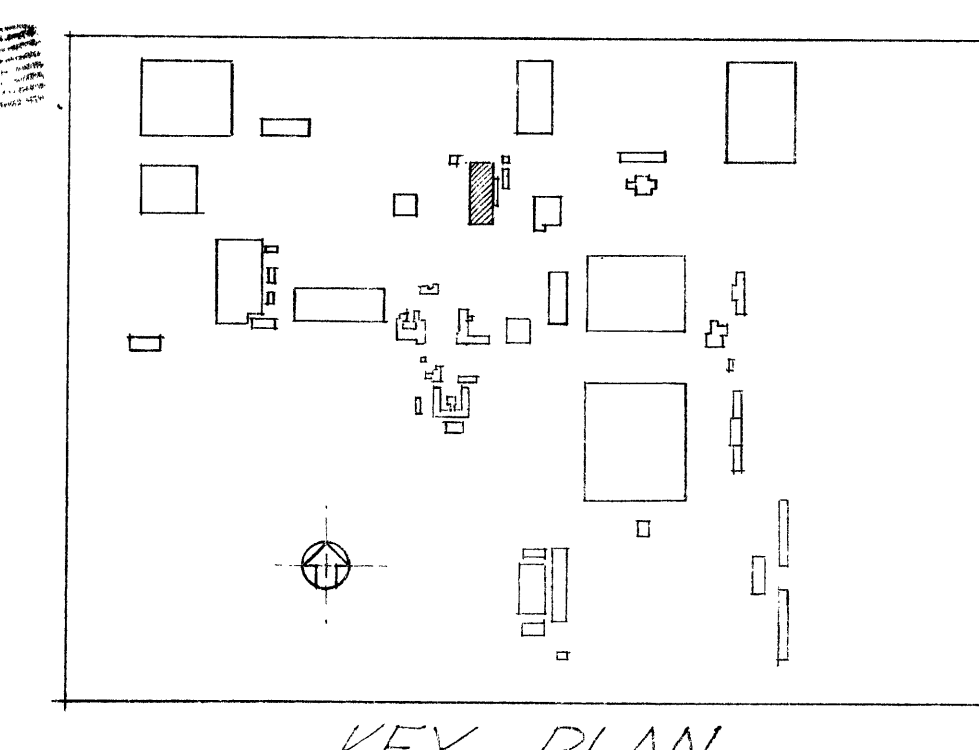
FR.S.C.# 8018 ESO# 15570
FOR INFORMATION ONLY

REVIEWED FOR CLASSIFICATION
JBB 05/02/2014
Initials Date
UNCLASSIFIED

CLASSIFICATION CHANGED TO UNCLASSIFIED
BY AUTHORITY OF DOE
DATE 05/02/2014
BY [Signature]

BT Images, Inc.
00001693

NOTE: ALL CROSS REFERENCE SH. NUMBERS SHOWN IN CIRCLES IN THIS SH. REFER TO ARCH. DRAWINGS ONLY.



REV. NO.	DATE	ISSUED FOR	BY	APP. DATE
10	7-14-53	AS BUILT		6E-7-14-53
9	10-24-52	DEVIATION REQUEST NO. 482-A		
8	10-27-51	REVISION REQUEST NO. 177		
7	7-17-51	RELEASED, FINISHED & CHECKED DRAWINGS	PK	8/25/51
6	7-10-51	REVISED SASH & ADDED LOUVER OPS. ON W. ELEV.	COX	8/25/51
5	6-28-51	NEW LOCATION OF VENT. OPENINGS - SEE N. ELEV.	COX	8/25/51
4	6-12-51	CORRECTIONS IS - NOTES	PK	8/25/51
3	5-10-51	ADDITIONS MADE TO ALTERNATIVE	S-NAF	
2	4-6-51	CONSTRUCTION	"S"	4-5-51
1	4-2-51	APPROVAL	"A"	

UNITED STATES ATOMIC ENERGY COMMISSION		
SMITH, HINCHMAN & GRYLLS, INC. ARCHITECTS & ENGINEERS DETROIT 26, MICHIGAN		
DRAWING TITLE EXTERIOR ELEVATIONS		
DRAWING APPROVED-DATE <u>[Signature]</u>	DRAWING APPROVED-DATE <u>[Signature]</u>	DRAWING APPROVED-DATE <u>[Signature]</u>
ARCHITECT ENGINEER DATE 4-1-51	CHECKED DATE 4-2-51	DATE 4-3-51
PROJECT "C" PLANT	BUILDING CLEANING C-400	SHEET E4-4-A

UNCLASSIFIED