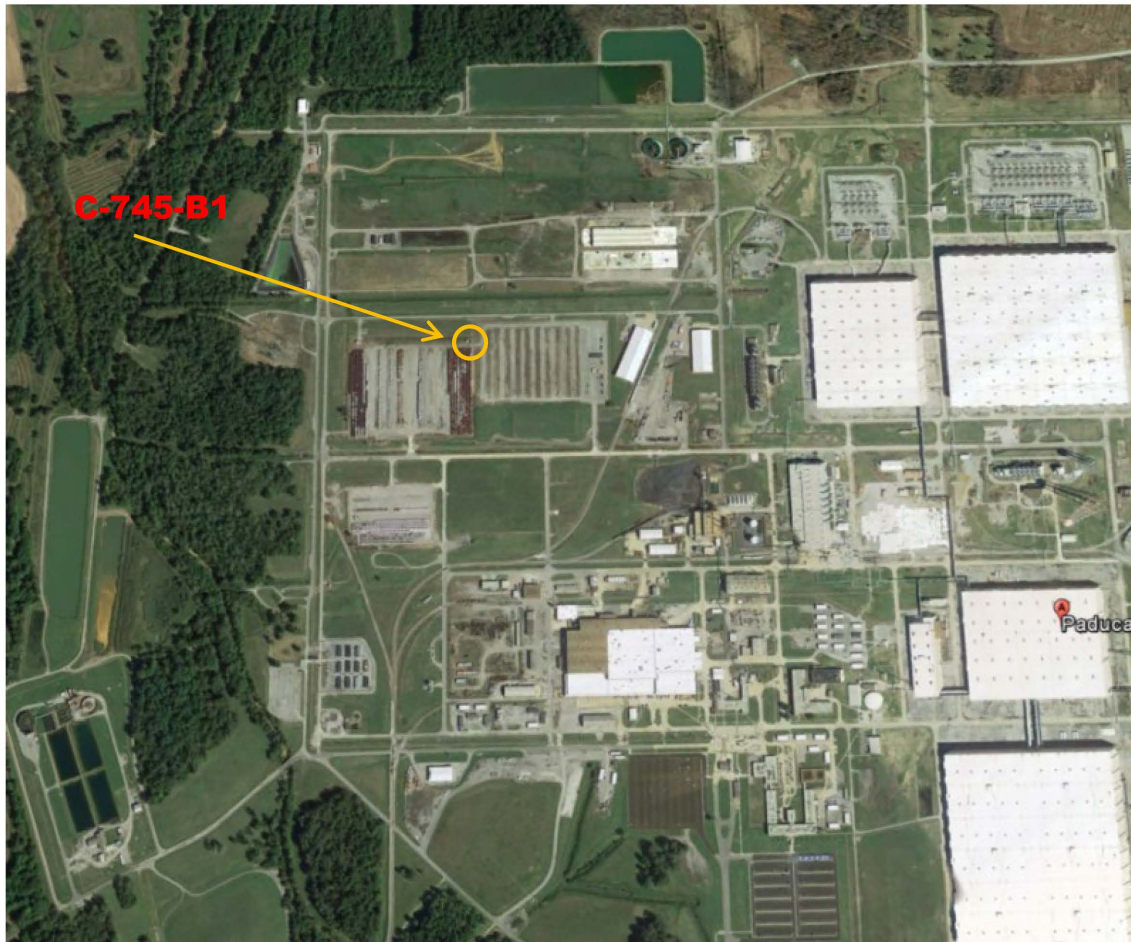


C-745-B1

Cylinder Storage Yard Office



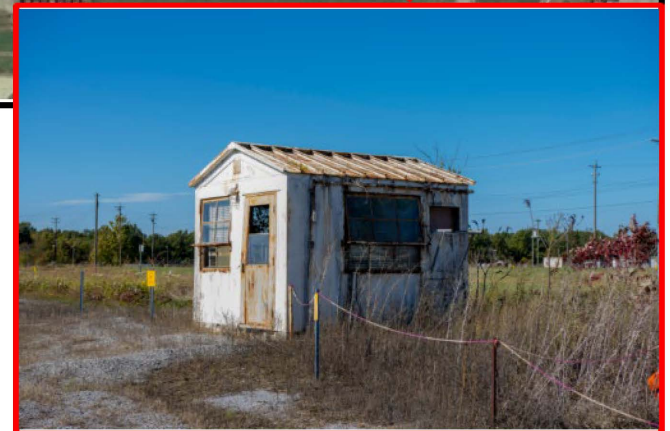
Facility Overview Briefing
February 7, 2020

Reflects consultation with EPA and Kentucky in accordance with the FY2018/FY2019 Site Management Plan that occurred on February 4, 2020, and includes incorporation of comments from those discussions.

C-745-B1 Cylinder Storage Yard Office

Purpose:

- DOE/FRNP is planning to demolish and dispose of the aboveground C-745-B1 office (slab will remain) during the first half of CY2020.
- The C-745-B1 office is on the list of facilities in Appendix 6 of the Site Management Plan (SMP) that require consultation with EPA and Kentucky.
- This presentation is intended to serve as consultation and provides the basis for demolition and disposal of the office (aboveground structure) outside of the FFA/CERCLA process.

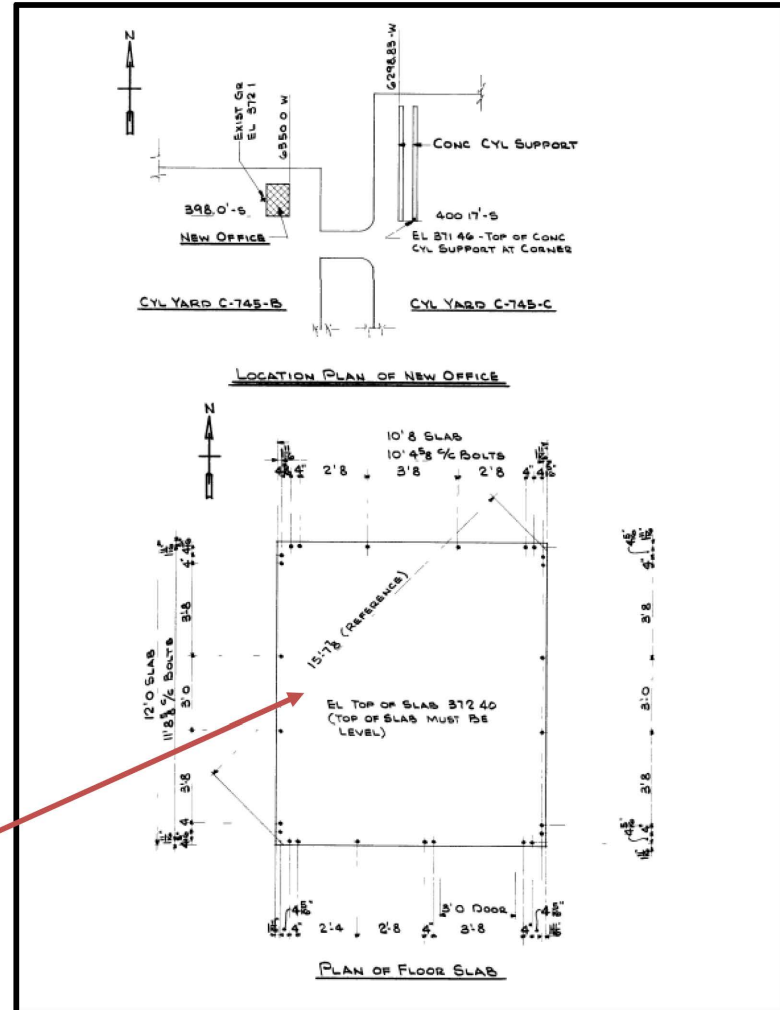


C-745-B1 Photo: 2019

C-745-B1 Cylinder Storage Yard Office

Construction History:

- Purchased as a prefabricated office.
- Installed in the early-1960s:
 - Engineering Design Drawings
 - Procurement records
 - Interviews
- Built on a concrete slab measuring approximately 12 feet by 11 feet in size.

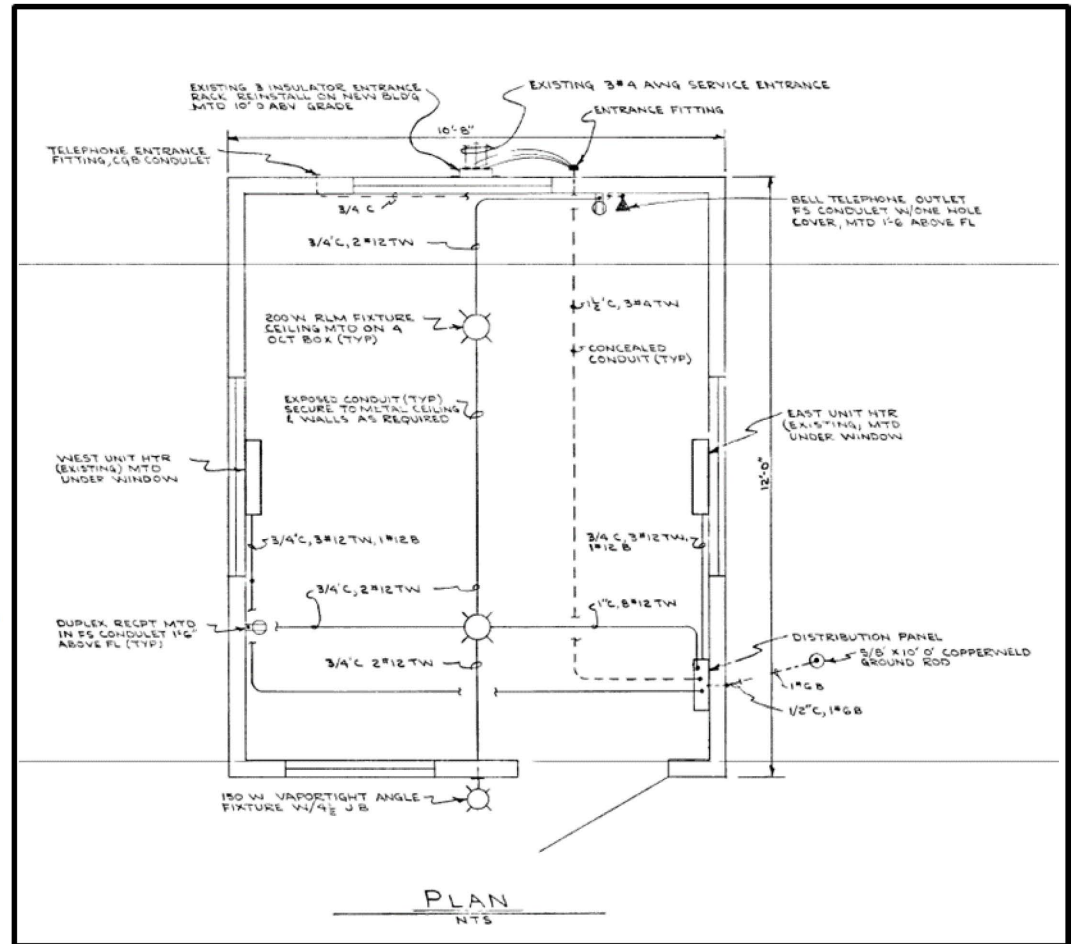


Engineering Design Drawing D-S-11595-A, dated 1963.

C-745-B1 Cylinder Storage Yard Office

Operational History:

- Operated from early 1960s to 1993.
- Used exclusively as an administrative office:
 - Housed personnel to track and maintain an inventory of cylinders moved in and out of the C-745-B Storage Yard.
 - Served as a cool-down office for yard workers.



Engineering Design Drawing EE-11595-A, dated 1963.

C-745-B1 Cylinder Storage Yard Office

Current Status :

- Ceased operation in approximately 1993.
- Listed in Appendix 6 of the SMP with a facility status of “shutdown” and pending further CERCLA determination.
- Demolition and disposal planned during the first half of CY2020.



C-745-B1 Photo: 2019

C-745-B1 Cylinder Storage Yard Office

Environmental Impacts:

- Office used exclusively for administrative purposes.
- No chemicals used or stored at the office.
- No basis or evidence of environmental releases originating from the office.
- Bordered by the following areas:
 - C-745-B Cylinder Yard on the south side
 - SWMU 226 on the west side
 - Internal Plant Ditches on the north side
- No information to indicate a release or threatened release of a hazardous substance into the environment from operations at this facility or the facility itself that would require an evaluation for a potential response action to protect future public health or welfare or the environment.

C-745-B1 Cylinder Storage Yard Office

Conclusions and Recommendations:

- DOE/FRNP proposes to proceed with demolition and disposal of the C-745-B1 office (aboveground structure) outside of the FFA/CERCLA process.
- All applicable laws, regulations, and procedures will be followed to ensure the demolition and disposal occurs in a safe, compliant manner.
- Document the removal of the C-745-B1 facility from the SMP during the next SMP revision.
- Any surrounding soils will be evaluated in the future as part of Geographical Area 10.



C-745-B1 Cylinder Storage Yard Office

Backup Engineering Design Drawings

C-745-B1 Cylinder Storage Yard Office

