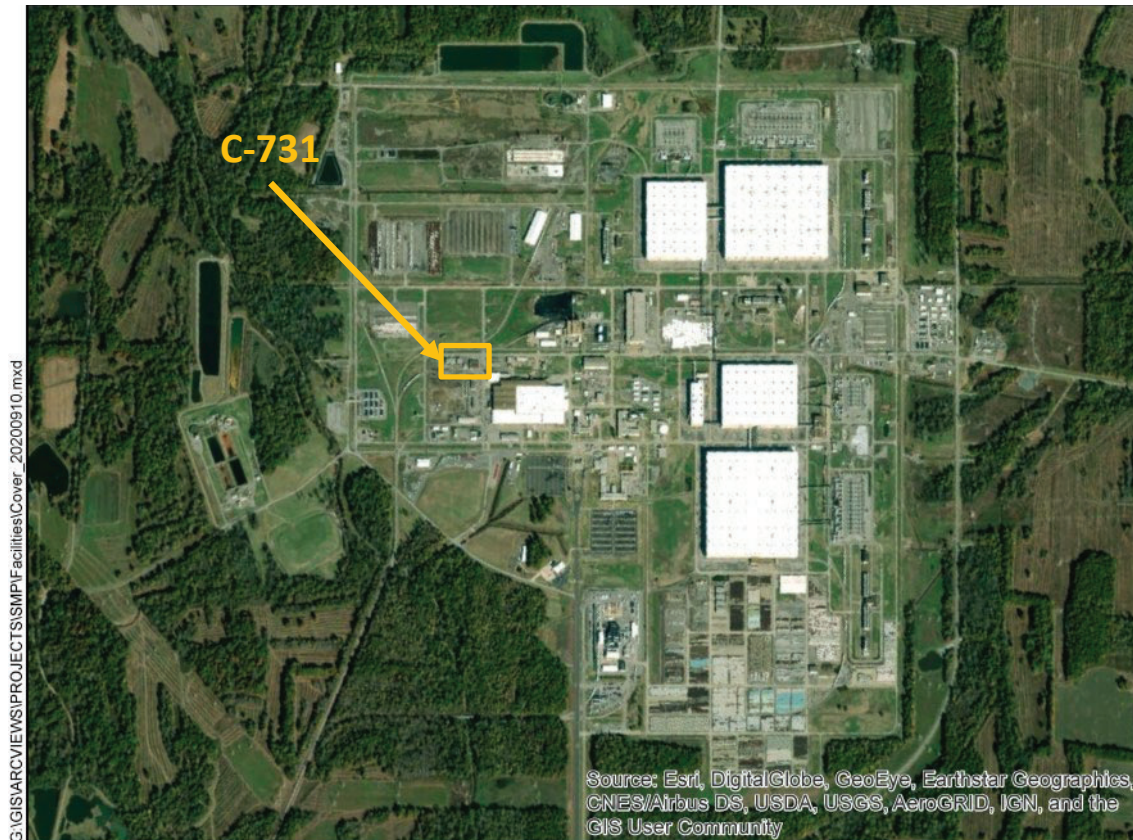


C-731 Railroad Repair Equipment Storage Building



Facility Overview Briefing

March 4, 2021

Reflects consultation with EPA and Kentucky in accordance with the Site Management Plan that occurred on February 1, 2021, and includes incorporation of comments from those discussions.

Purpose

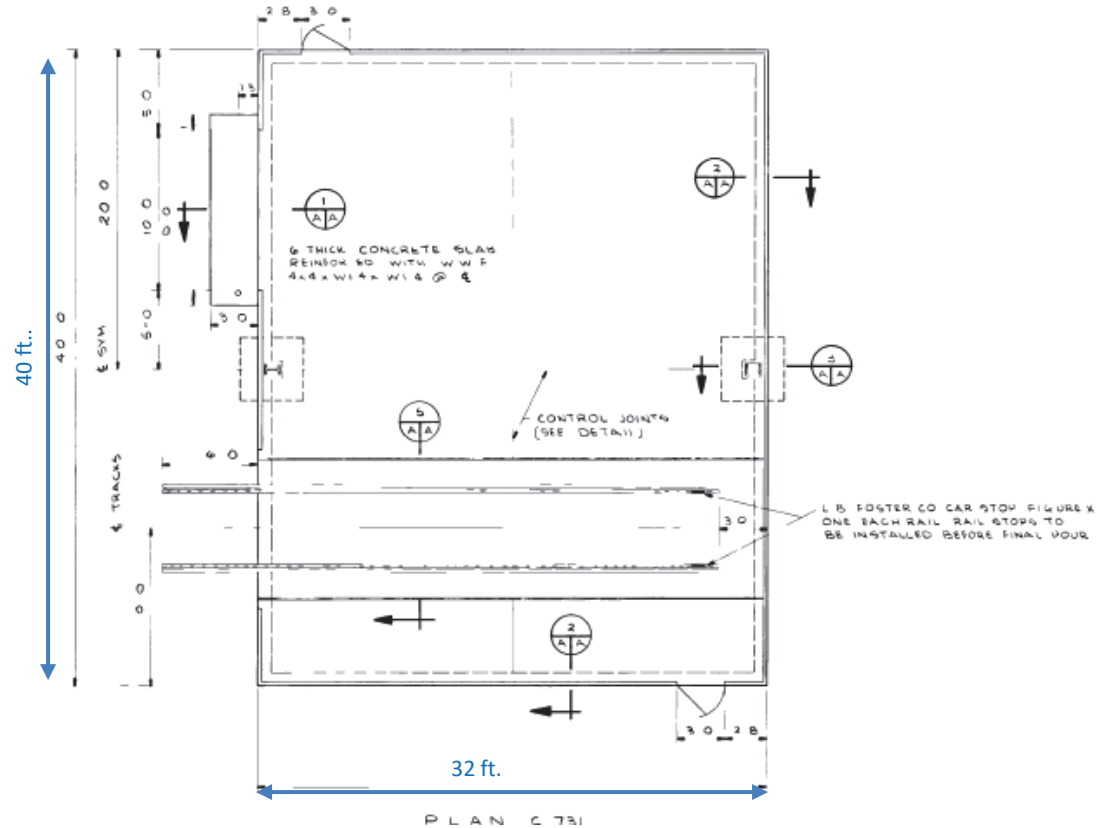
- C-731 Railroad Repair Equipment Storage Building is a candidate for future demolition and disposal, contingent on funding priorities.
- Listed in Appendix 6 of the Site Management Plan (SMP) and requires consultation with EPA and Kentucky for CERCLA screening prior to demolition.
- This presentation is intended to serve as consultation, providing the basis for demolition and disposal of the aboveground structure outside of the FFA/CERCLA process.
- The slab/soils would remain for future CERCLA evaluation under Geographical Area (GA) 14.



C-731 Facility Photo: 8/2020

Construction History

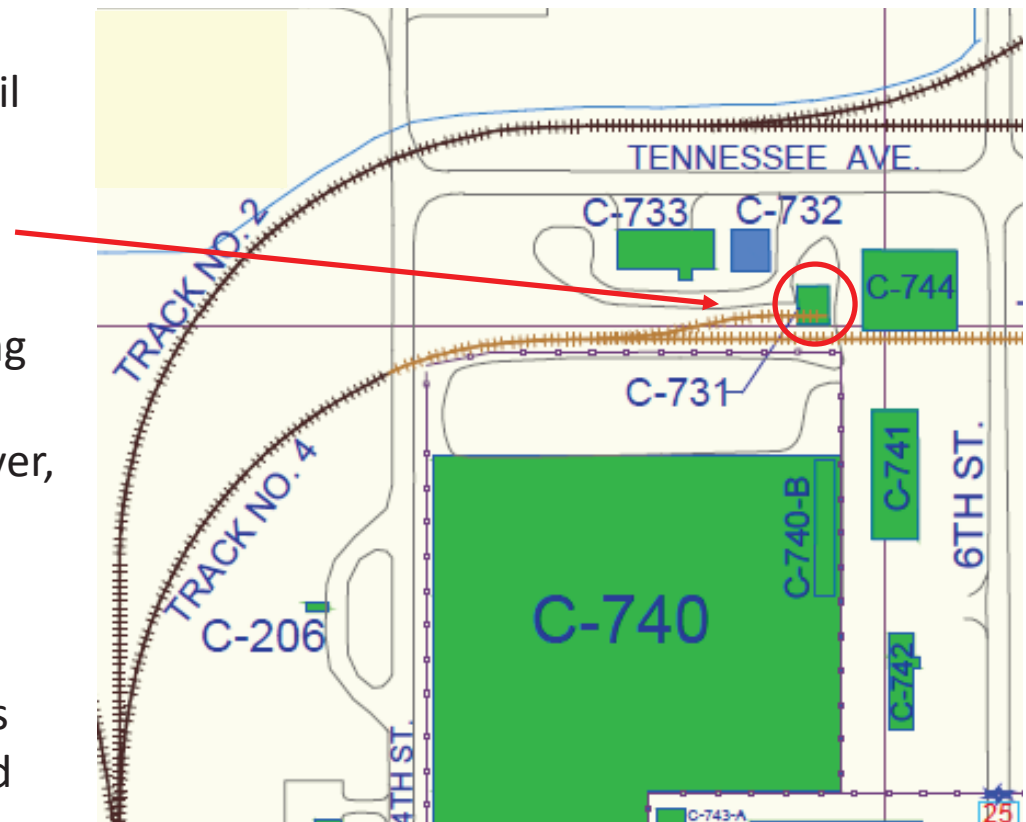
- Located within the Paducah Site security fence to the northwest of the C-720 facility along Rail Track No. 4 (see Slide 4).
- The C-731 facility was constructed in 1981.
- The C-731 facility is a prefabricated metal building.
- The facility is approximately 1,280 ft².
 - Measuring ~ 32 ft x 40 ft



Engineering Drawing S5E13834-A,
June 1981

Operational History

- Constructed and operated with the primary purpose of storing mobile equipment used to support the operation and repair of the plant rail system.
- A rail spur extended from Rail Track No. 4 into the interior of the building to store mobile equipment inside (e.g., tamping machine, rail car mover, cylinder hauler)
- USEC leased the facility in the early 1990s and continued to use it for its intended purpose until USEC ceased leased operations in 2014.
- The facility was transitioned from USEC back to DOE in 2014.



U.S. DEPARTMENT OF ENERGY PADUCAH GASEOUS DIFFUSION PLANT		
SITE MAP		
Paducah, KY	Drawn by S.R. Durbin, Pro2Serve	REV. NO.
PAD-P2S-15-GIS-0001		14

Current Status

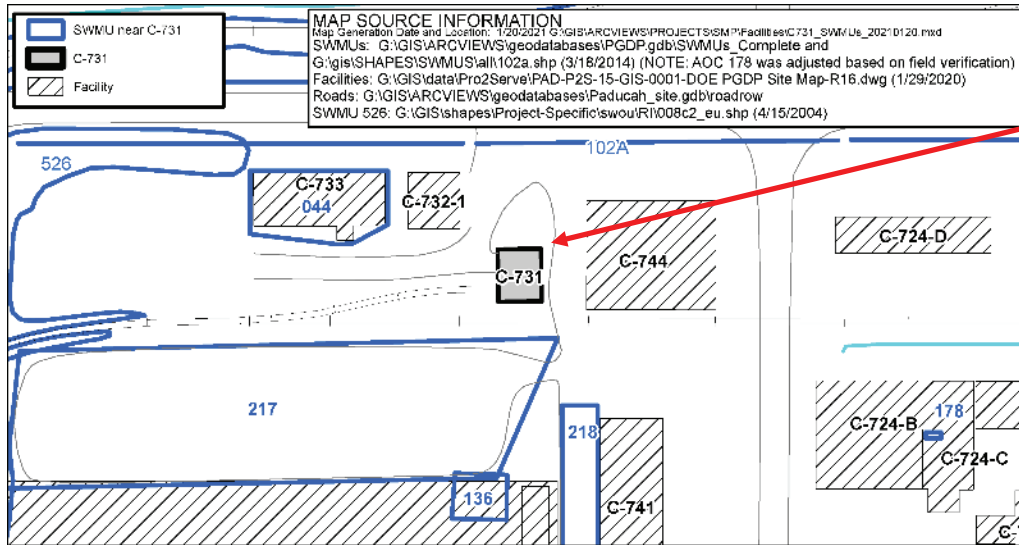
- The C-731 facility continues to operate, but is no longer used for storage of railroad repair equipment.
- Upon transition of the facility from USEC to DOE in 2014, the responsible DOE contractors began utilizing the facility for storage of replacement parts for the following:
 - Repair of the sanitary water system.
 - Repair of the fire water system.
- The facility has no known history of storing any chemicals or waste.



C-731 Facility Photos:
10/2020



Environmental Impacts (Solid Waste Management Units)



- The C-731 facility is not designated as a SWMU/AOC.

SWMU No.	Facility Name	Current Status	NFA Approval By
044	C-733 Hazardous Waste Storage Area	Permitted	
136	C-740 TCE Spill Site	NFA	EPA and KY via WAG 1&7 ROD 8/10/1998
178	C-724-A Paint Spray Booth slab and underlying soils	Soils and Slabs OU Remaining D&D	
217	OS-06	Soils Remedial	
218	OS-07 slab and underlying soils	Soils and Slabs OU	

Environmental Impacts

- No information to indicate a release or threatened release of a hazardous substance that would require an evaluation for a potential response action to protect future public health or welfare or the environment.
- C-731 has been used for its intended purpose since its initial construction in 1981 to store useable equipment and parts.
- Building materials used for construction could contain lead-based paints and asbestos materials, both of which can be effectively verified during a pre-demolition inspection and properly managed using standard demolition and waste management practices.
- No history or records of chemical use, storage of waste, or spills that would pose environmental release threat.

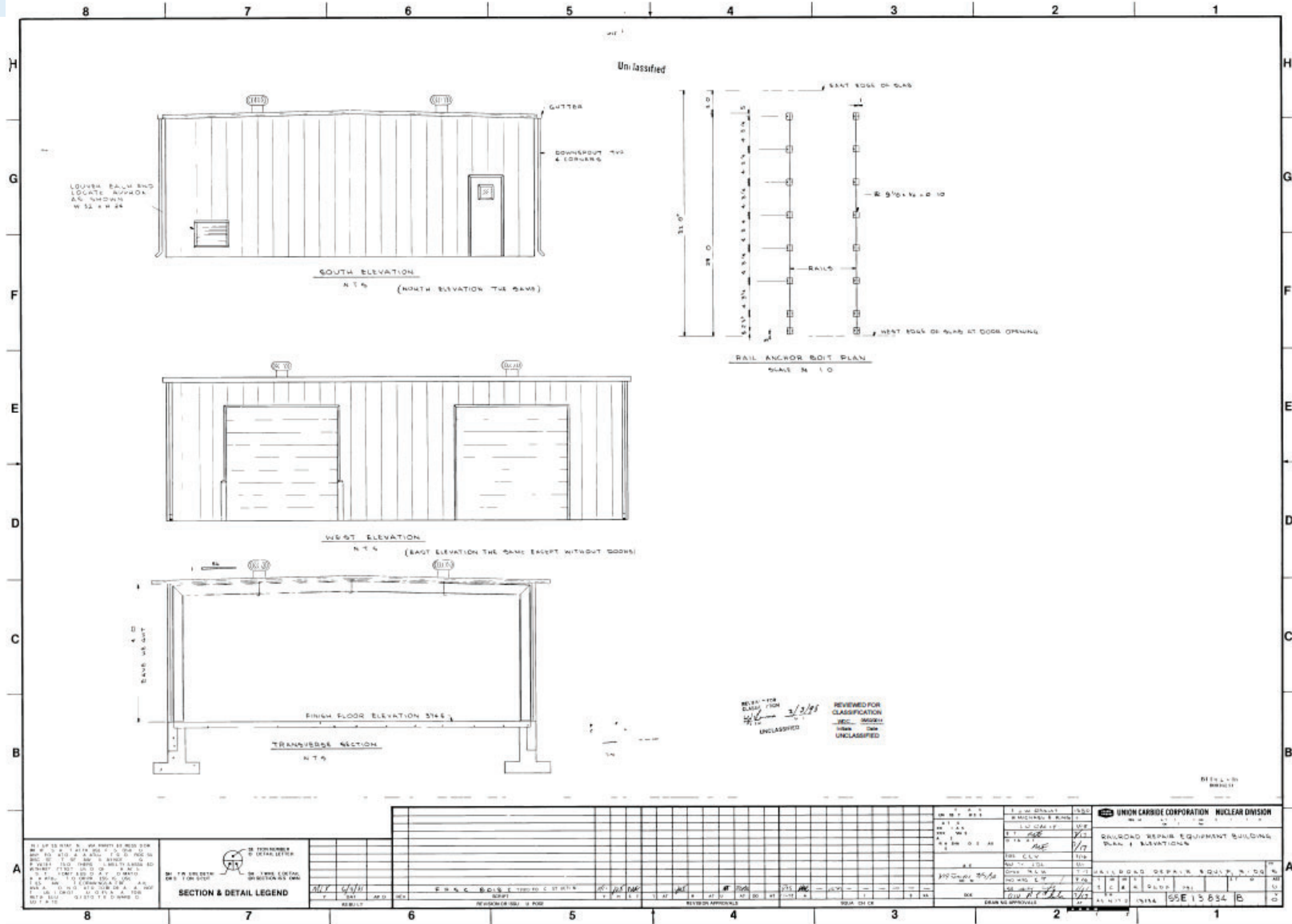
Conclusion and Recommendations

- Walkdown inspection of the facility, employee interviews, and other reviewed historical information did not identify any unusual conditions that would pose a potential threat of environmental release during future demolition of the aboveground structure.
- Pending ceasing of operation, deactivation, and availability of funding, DOE/FRNP proposes to proceed with demolition and disposal of the C-731 (aboveground structure) outside of the FFA/CERCLA process contingent upon the fact that no additional changes have occurred that would affect the CERCLA determination of the facility prior to demolition.
- All applicable laws, regulations, and DOE procedures/protocols will be followed to ensure the demolition and disposal occurs in a safe, compliant manner, including conducting additional radiological characterization through confirmation radiological surveys (as necessary) to support demolition and waste disposition.
- Document the removal of the C-731 facility in the appropriate annual SMP revision.
- The future evaluation conducted for GA 14 will further evaluate the threat of release associated with the concrete pad/soils from C-731 facility.

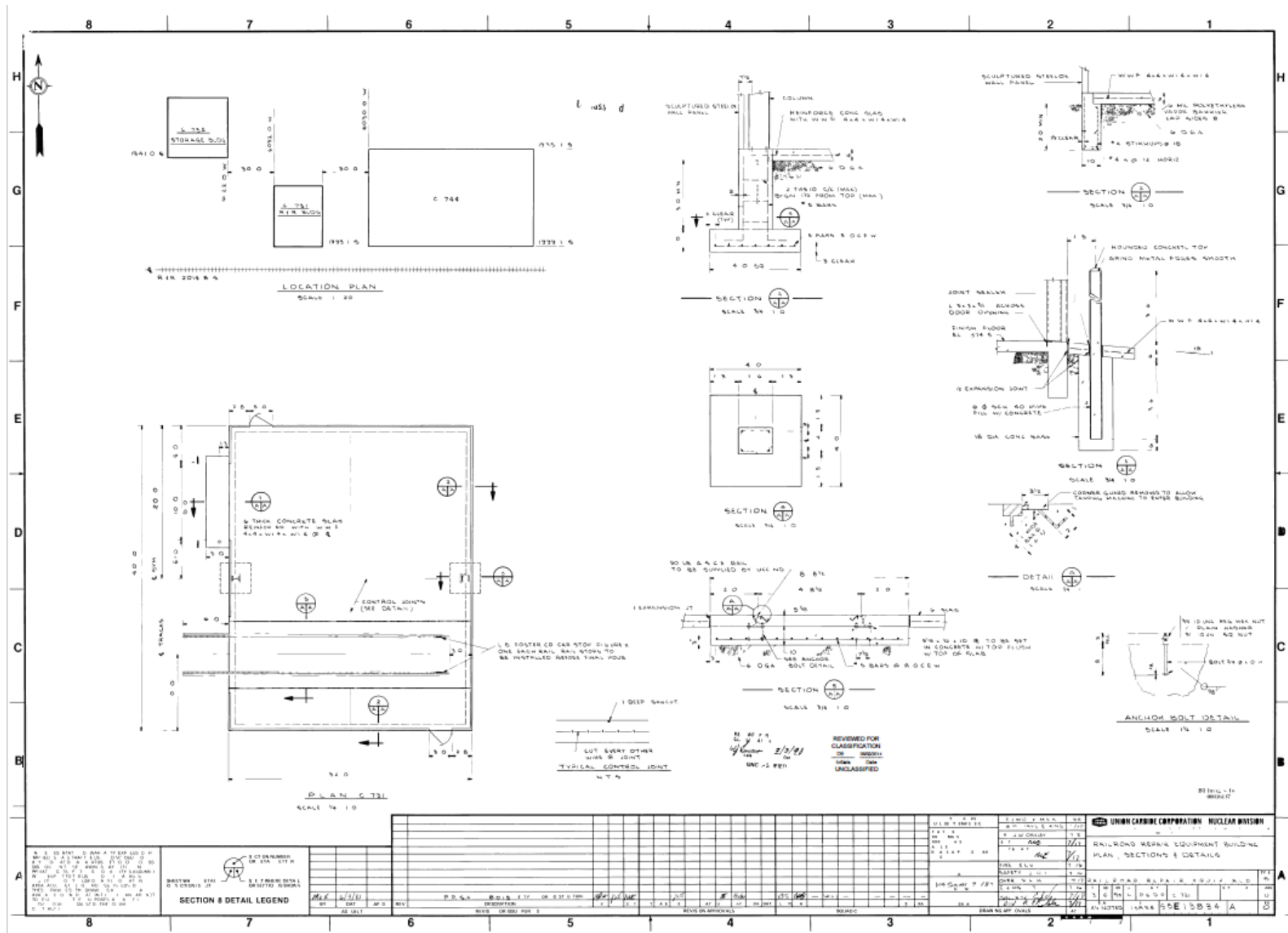
C-731 Railroad Repair Equipment Storage Building

BACKUP INFORMATION

Backup Information (Engineering Drawing)

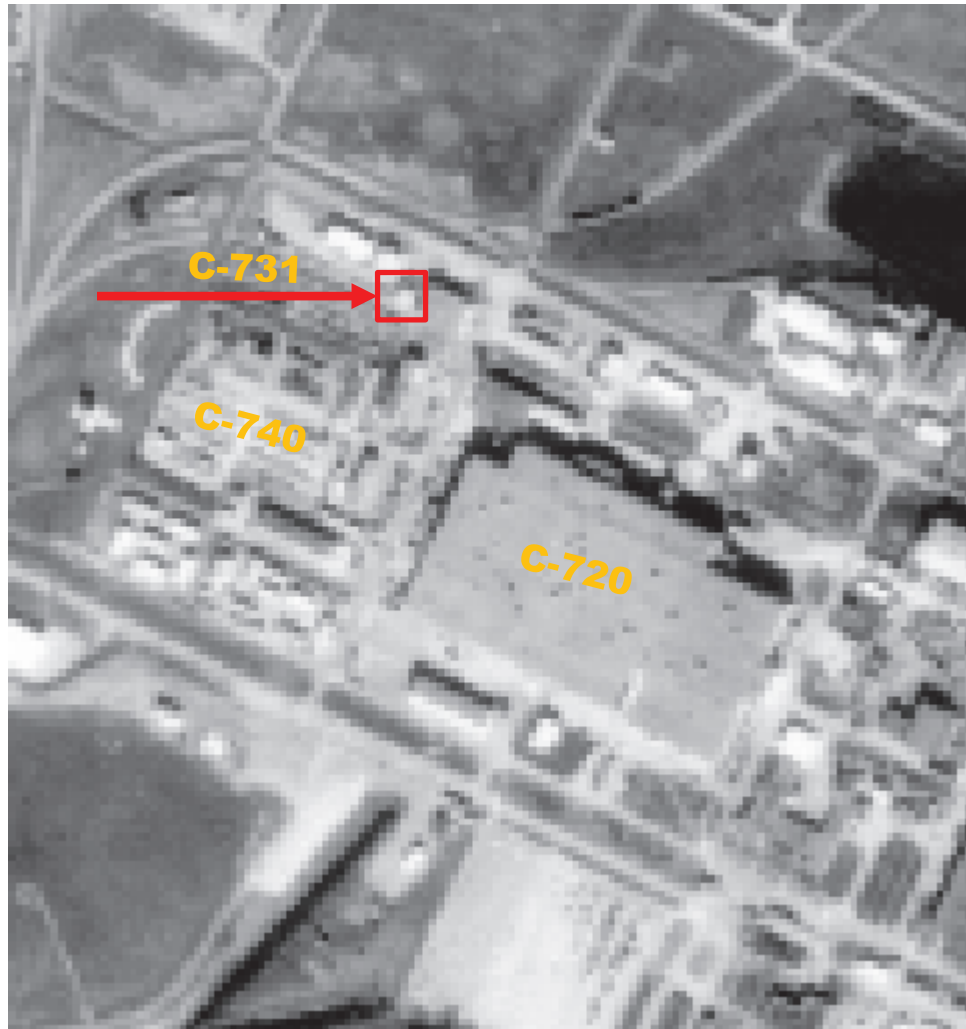


Backup Information (Engineering Drawing)



Engineering Drawing S5E13834-A

C-731 Railroad Repair Equipment Storage Building (Aerial Photograph)



Modified from Aerial Photo: November 22, 1998 (NAPP 11412-54)