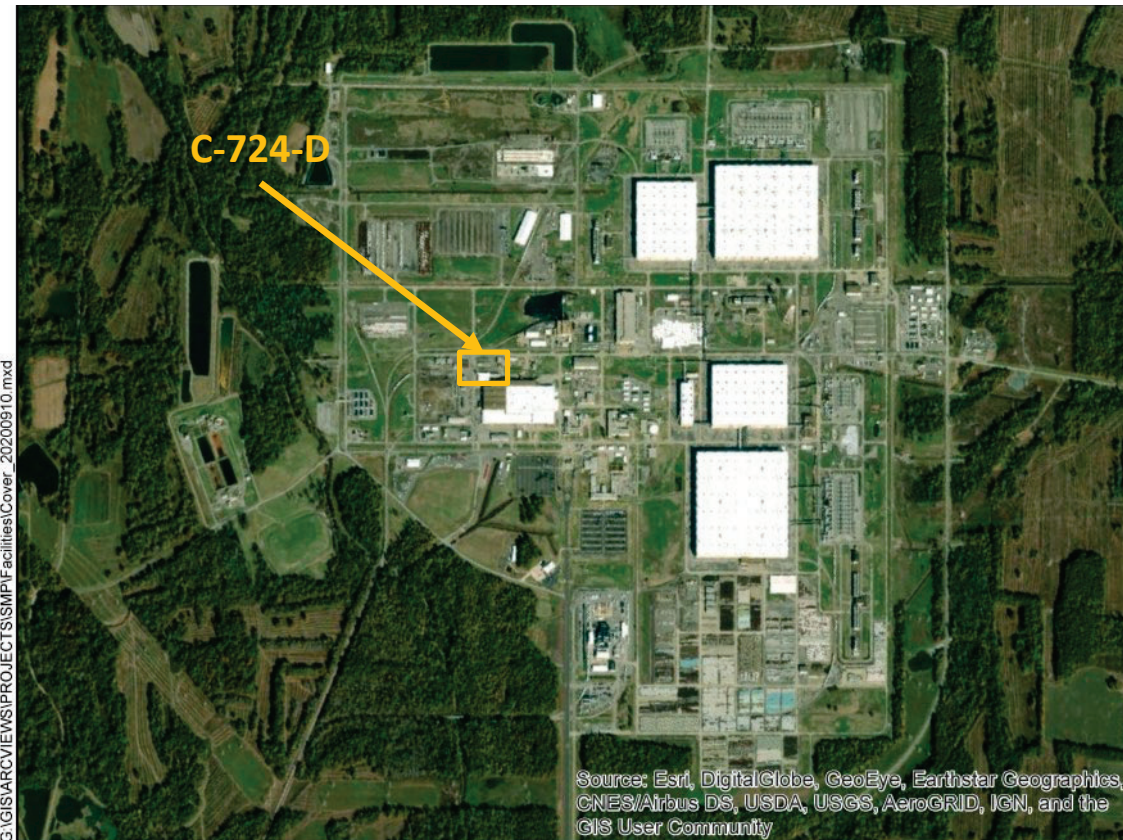


C-724-D Lumber Storage Building



Facility Overview Briefing

March 4, 2021

Reflects consultation with EPA and Kentucky in accordance with the Site Management Plan that occurred on February 1, 2021, and includes incorporation of comments from those discussions.

Purpose

- The C-724-D Lumber Storage Building is a candidate for future demolition and disposal, contingent on funding priorities.
- Listed in Appendix 6 of the Site Management Plan (SMP) and requires consultation with EPA and Kentucky for CERCLA screening prior to demolition.
- This presentation is intended to serve as consultation, providing the basis for demolition and disposal of the aboveground structure outside of the FFA/CERCLA process.
- The slab/soils would remain for future CERCLA evaluation under Geographical Area (GA) 14.



C-724-D Facility Photo: 10/2020

Construction History

- C-724-D is located within the Paducah Site security fence, north of C-720 and near the C-724-A Carpenter Shop Annex and the C-724-B Carpenter Shop.
- One-story prefabricated building that was constructed in 1976.
- The building has both an enclosed area and an open bay area with a concrete foundation, shed roof of steel panels, and exterior of steel panels.
- The facility is approximately 4,416 ft² (includes enclosed area and open bay).
 - Measuring ~48 ft x ~92 ft



C-724-D Facility Photos: 10/2020

Operational History

- C-724-D has operated as a lumber storage/carpenter hardware storage building since its initial construction in 1976.
- USEC leased the facility in the early 1990s and continued to use it as a lumber storage/carpenter building until USEC ceased lease operations in 2014.
- The facility was transitioned from USEC back to DOE in 2014.



C-724-D Facility Photos: 10/2020

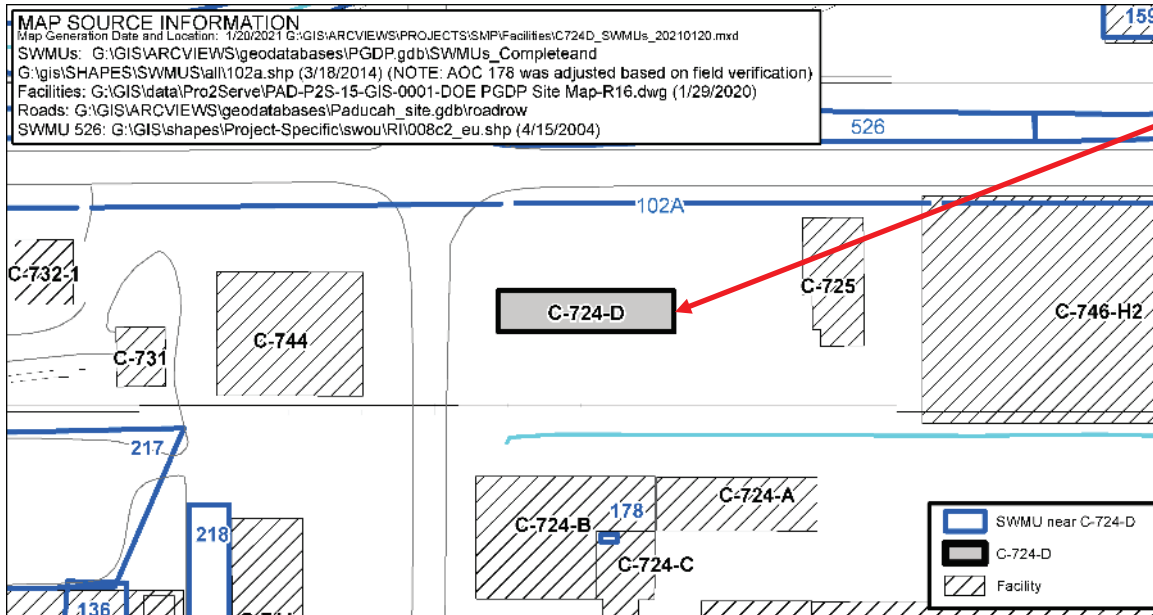
Current Status

- C-724-D continues to operate and serves as a lumber storage/carpenter hardware storage building.
- Walkdown inspection conducted in October 2020 confirmed no unusual conditions.
 - No floor sumps, floor drains, or visible staining.
 - No chemicals were stored in the facility.
 - Contains wood, roofing, dry wall, insulation, lumber, etc.
 - Scaffolding, metal hardware, and doors.
 - Floor and ceiling replacement tiles.
 - No longer houses transite material.



C-724-D Facility Photos: 10/2020

Environmental Impacts (Solid Waste Management Units)



- The C-724-D Lumber Storage Building is not designated as a SWMU/AOC.

SWMU No.	Facility Name	Current Status	NFA Approval By
136	C-740 TCE Spill Site	NFA	EPA and KY via WAG 1&7 ROD 8/10/1998
159	C-746-H3 Storage Pad slab and underlying soils	Soils and Slabs OU	
178	C-724-A Paint Spray Booth slab and underlying soils	Soils and Slabs OU Remaining D&D	
217	OS-06	Soils Remedial	
218	OS-07 slab and underlying soils	Soils and Slabs OU	

Environmental Impacts

- No information to indicate a release or threatened release of a hazardous substance that would require an evaluation for a potential response action to protect future public health or welfare or the environment.
 - C-724-D has been used solely as a storage type facility since its initial construction in 1976.
 - Building materials used for construction could contain lead-based paints and asbestos materials, both of which can be effectively verified during a pre-demolition inspection and properly managed using standard demolition and waste management practices.
 - No history or records of chemical use or spills that would pose environmental release threat.

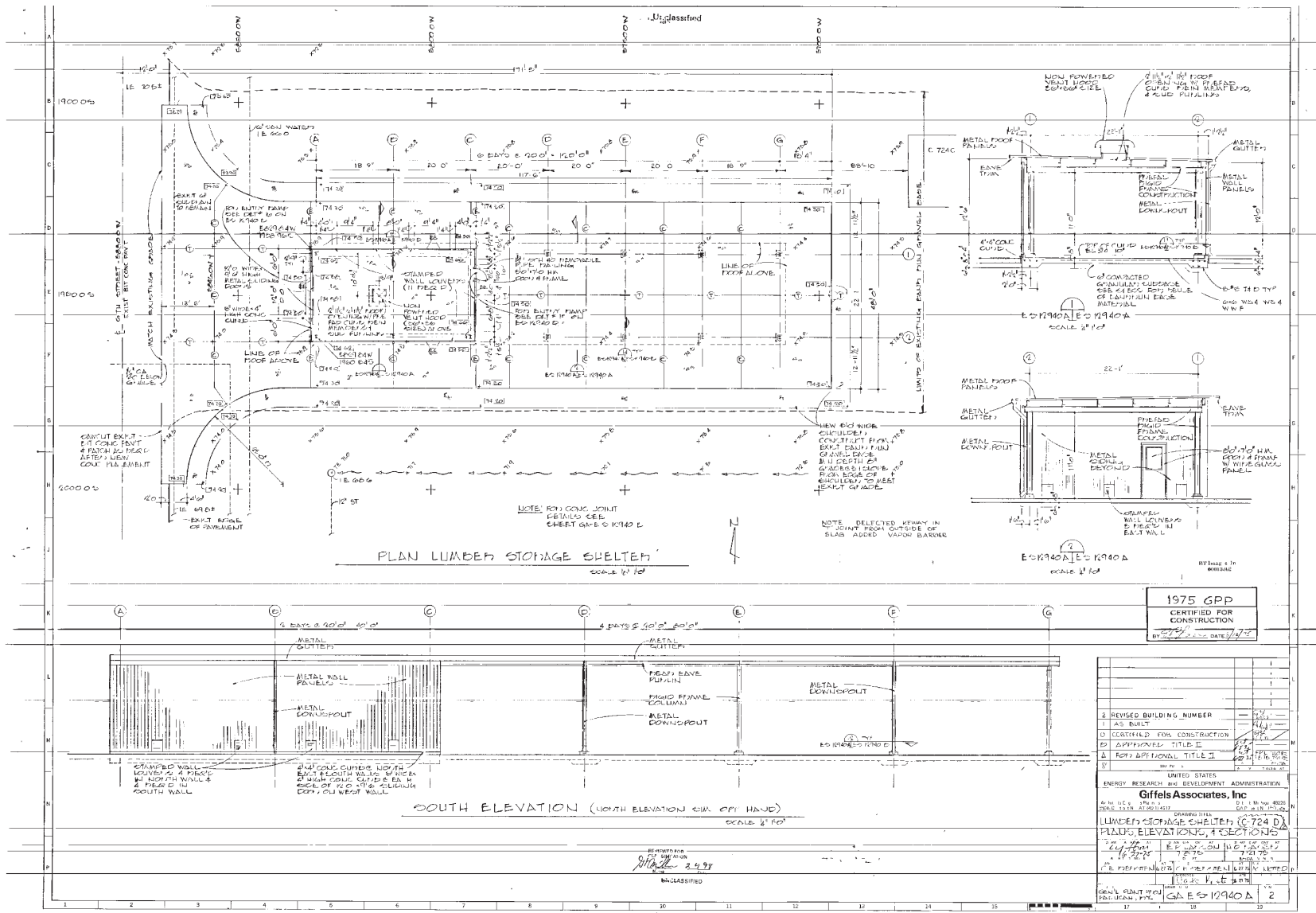
Conclusion and Recommendations

- Walkdown inspection of the facility, employee interviews, and other reviewed historical information did not identify any unusual conditions that would pose a potential threat of environmental release during future demolition of the aboveground structure.
- Pending ceasing of operation, deactivation, and availability of funding, DOE/FRNP proposes to proceed with demolition and disposal of the C-724-D (aboveground structure) outside of the FFA/CERCLA process contingent upon the fact that no additional changes have occurred that would affect the CERCLA determination of the facility prior to demolition.
- All applicable laws, regulations, and DOE procedures/protocols will be followed to ensure the demolition and disposal occurs in a safe, compliant manner, including conducting additional radiological characterization through confirmation radiological surveys (as needed) to support demolition and waste disposition.
- Document the removal of the C-724-D facility in the appropriate annual SMP revision.
- The future evaluation conducted for GA 14 will further evaluate the potential threat of release associated with the concrete pad/soils from the C-724-D facility.

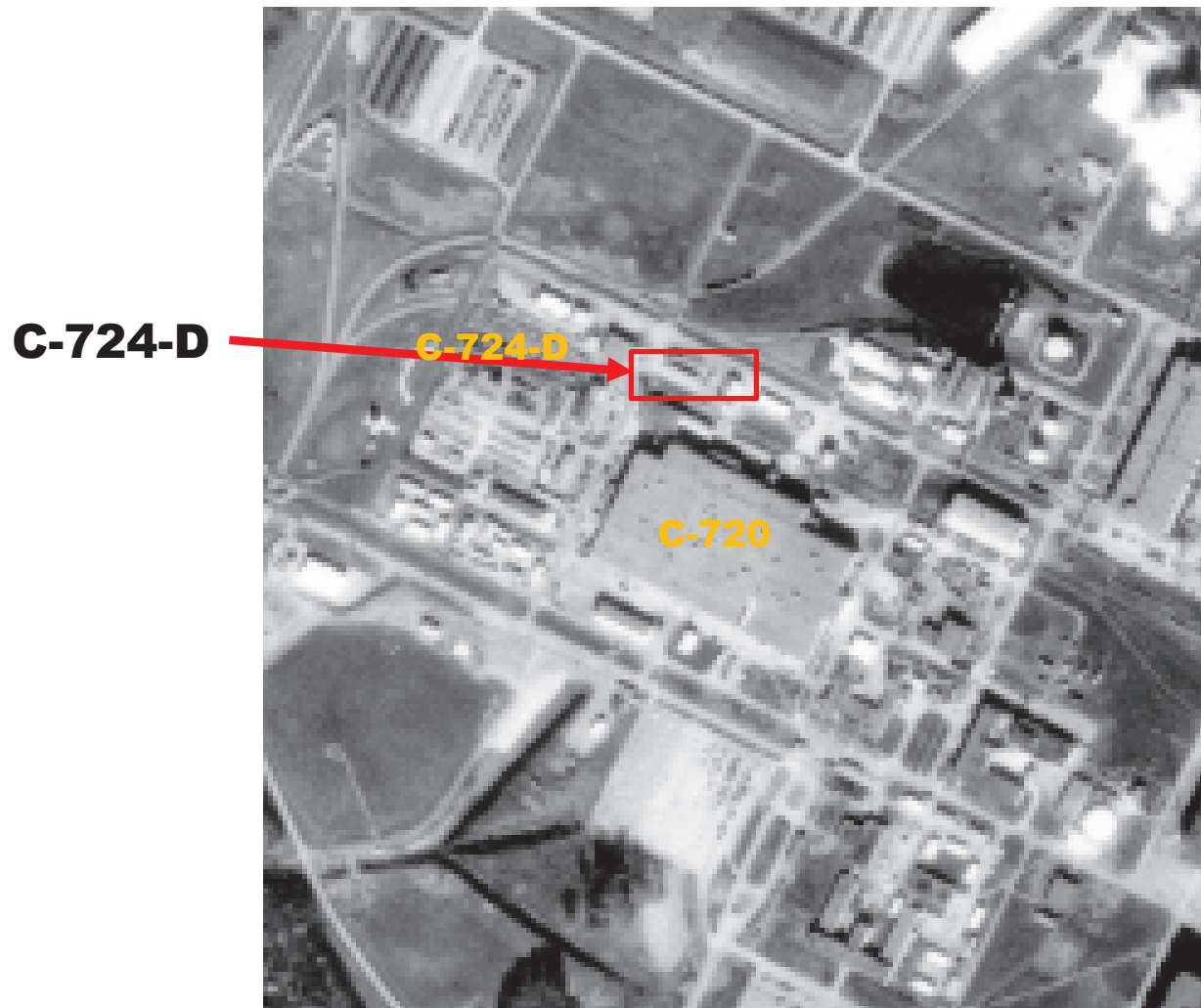
C-742-D Lumber Storage Building

BACKUP INFORMATION

Backup Information (Engineering Drawing)



C-742-D Lumber Storage Building (Aerial Photograph)



Modified from Aerial Photo: November 22, 1998 (NAPP 11412 - 54)