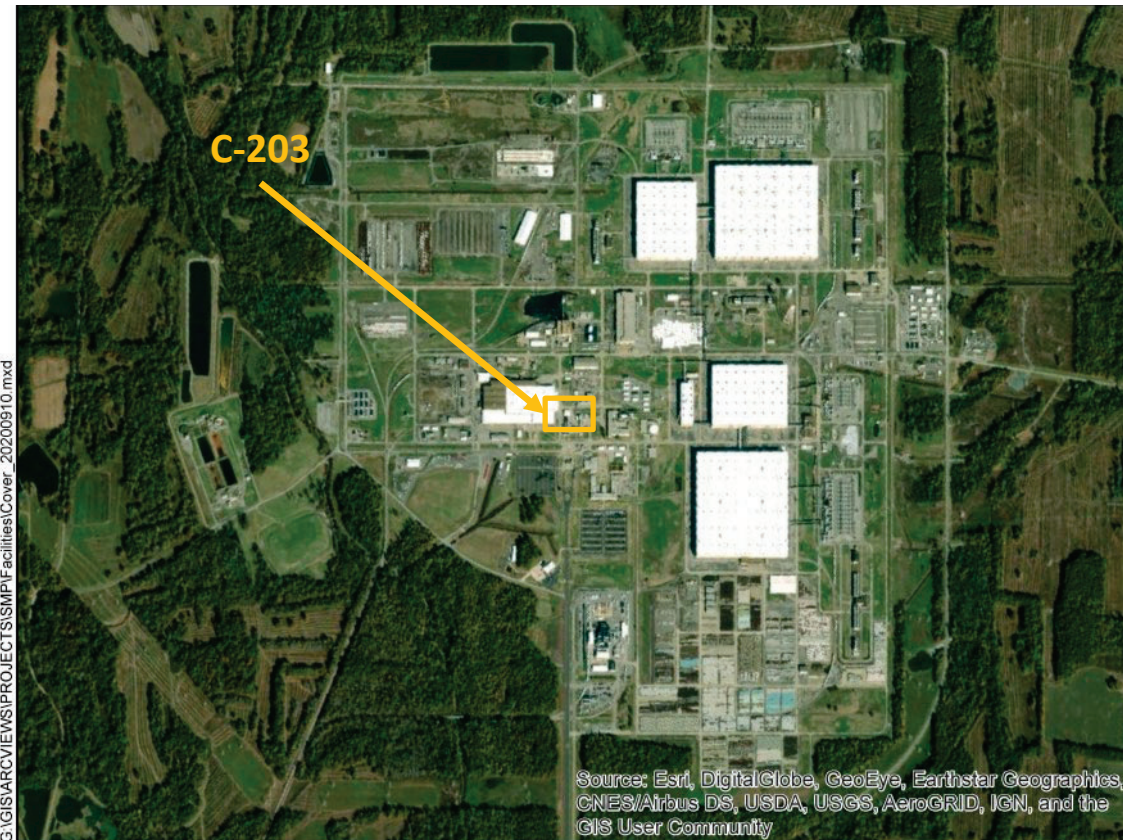


# C-203 Emergency Vehicle Shelter



Facility Overview Briefing

March 4, 2021

Reflects consultation with EPA and Kentucky in accordance with the Site Management Plan that occurred on February 1, 2021, and includes incorporation of comments from those discussions.

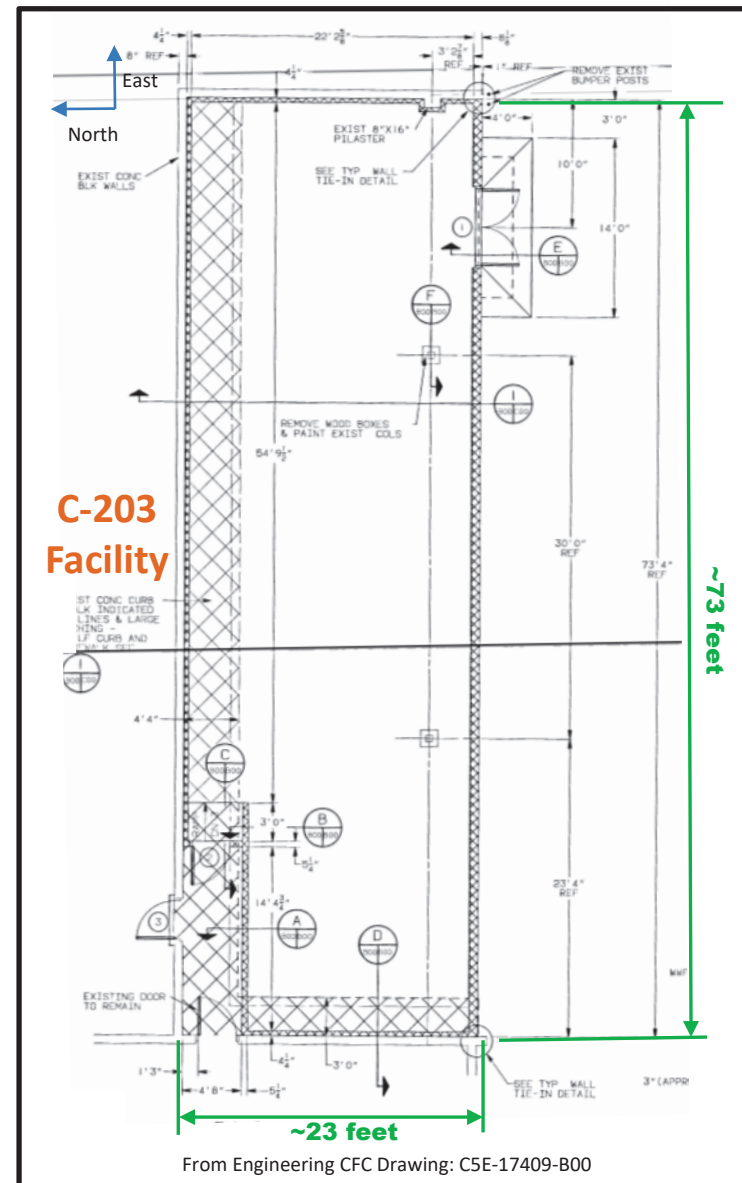
# Purpose

- The C-203 Emergency Vehicle Shelter is a candidate for future demolition and disposal, contingent on funding priorities.
- Listed in Appendix 6 of the Site Management Plan (SMP) and requires consultation with EPA and Kentucky for CERCLA screening prior to demolition.
- This presentation is intended to serve as consultation, providing the basis for demolition and disposal of the aboveground structure outside of the FFA/CERCLA process.
- The slab/soils would remain for future CERCLA evaluation under Geographical Area (GA) 14.



# Construction History

- C-203 is located within the Paducah Site security fence, southeast of the C-720 Building and west of the C-710 Laboratory Building.
- The C-203 facility was constructed in 1979.
- Constructed of masonry materials, open to the east side for vehicle parking, and attached to the northwest corner of the C-200 Guard and Fire Headquarters.
- The facility is approximately 1,800 ft<sup>2</sup> of reinforced-concrete floor area.
  - Measuring ~73 ft x ~23 ft



# Operational History

- C-203 has operated as a vehicle shelter since its initial construction in 1979.
- USEC leased the facility in the early 1990s and continued to use it as a vehicle shelter until USEC ceased lease operations in 2014.
- Transitioned from USEC back to DOE in 2014.



C-203 Facility Photos: 10/2020

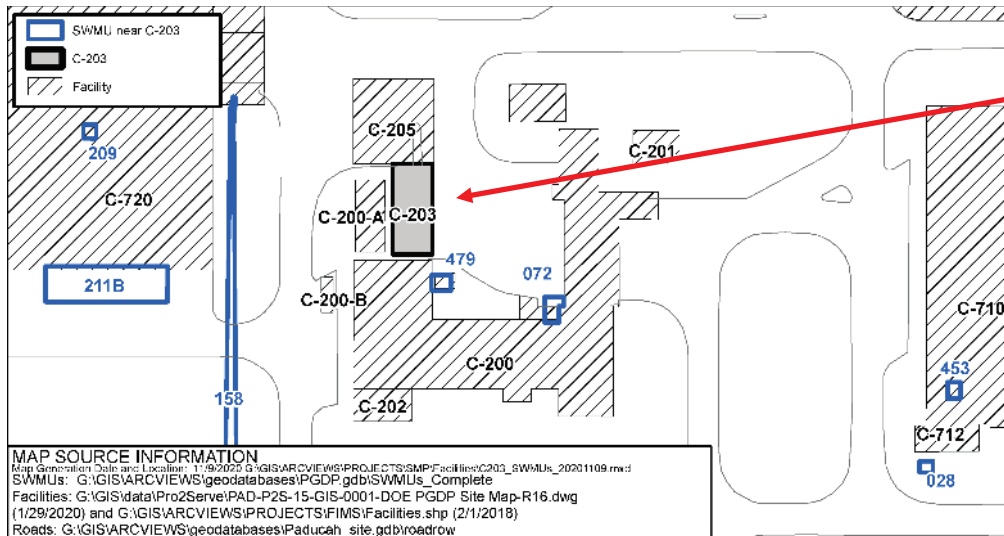
# Current Status

- Continues to operate and serve as a vehicle shelter for emergency response operations.
- Walkdown inspection in October 2020 confirmed no unusual conditions.
  - Emergency vehicles parked.
  - Forklift.
  - The following miscellaneous items were present.
    - Potable 5 gal drinking water containers,
    - Empty breathing air cylinders pending refill,
    - Portable laundry baskets.
- The portable cylinder carts storing the air cylinders are designated as Radioactive Material Areas (RMAs) due to fixed radiological contamination from legacy use; they will be removed prior to demolition.



C-203 Facility Photos: 10/2020

# Environmental Impacts (Solid Waste Management Units)



The C-203 Emergency Vehicle Shelter is not designated as a SWMU/AOC.

SWMU No.	Facility Name	Current Status	NFA Approval By
28	C-712 Laboratory Equalization Tank slab and underlying soils	Soils and Slabs OU	
72	C-200 Underground Gasoline Tanks	NFA	EPA HSWA Class 1 Permit Mod 3/17/1993; KDWM (UST C-200A; UST Branch) 11/23/1999
158	Chilled-Water System Leak Site	Soils OU	
209	C-720 Compressor Shop Pit Sump slab and underlying soils	Soils and Slabs OU	
211B	C-720 TCE Spill Site Southeast	GWOU/ Soils and Slabs OU	
453	S-710-46	NFA	KDWM 9/11/2003
479	C-204 Disintegrator Building	NFA	KDWM 6/3/2002

# Environmental Impacts

- No information to indicate a release or threatened release of a hazardous substance that would require an evaluation for a potential response action to protect future public health or welfare or the environment.
- C-203 has been primarily used as a parking shelter for emergency vehicles since its initial construction in 1979.
- Building materials used for construction could contain lead-based paints and asbestos materials, both of which can be effectively verified during a pre-demolition inspection and properly managed using standard demolition and waste management practices.
- No history or records of chemical use or spills that would pose environmental release threat.

# Conclusion and Recommendations

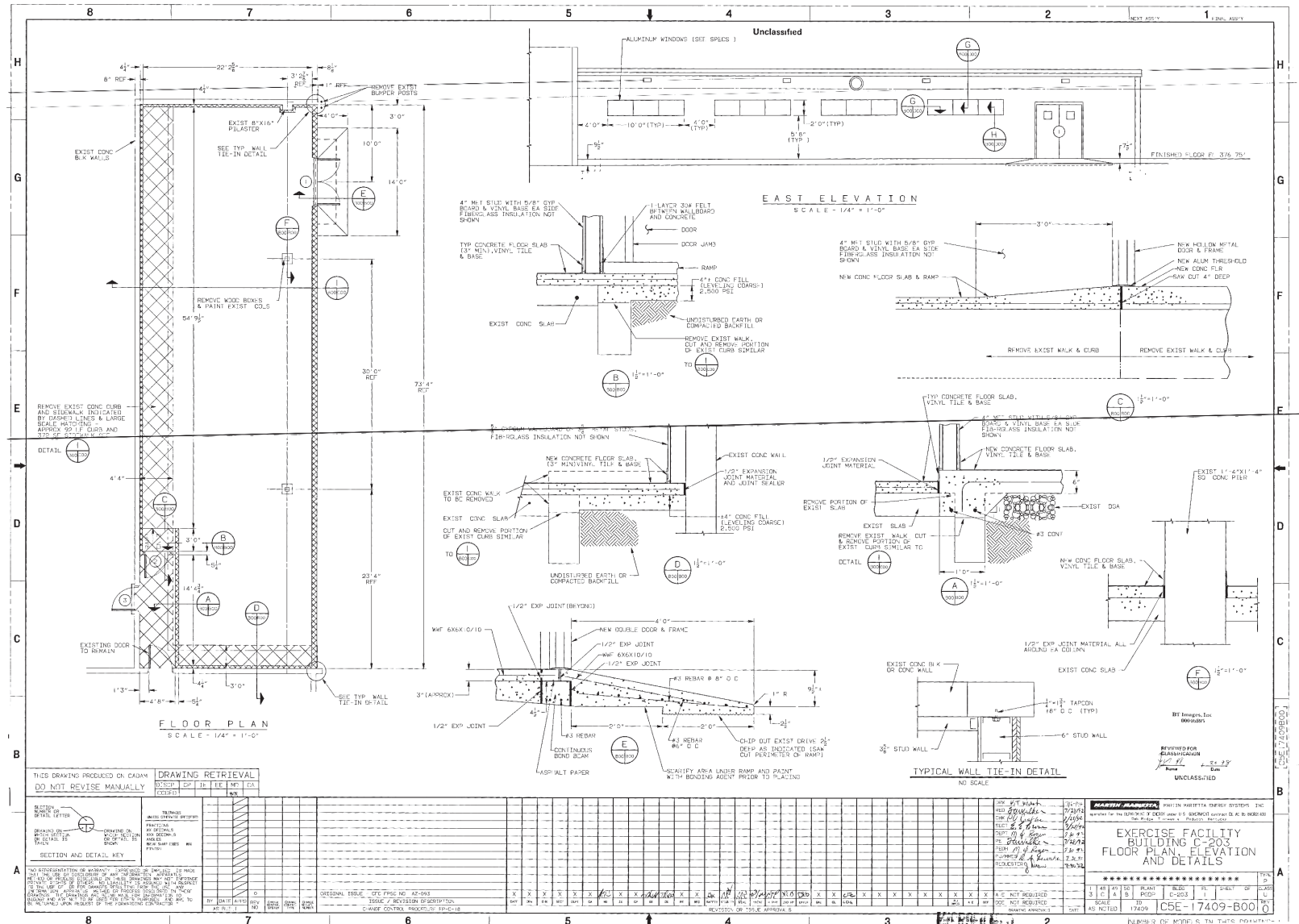
- Walkdown inspection of the facility, employee interviews, and other reviewed historical information did not identify any unusual conditions that would pose a potential threat of environmental release during future demolition of the aboveground structure.
  - Deactivation will include removal of any accessible loose items being stored and designated as RMAs (to the extent practicable) prior to demolition.
- Pending ceasing of operation, deactivation, and availability of funding, DOE/FRNP proposes to proceed with demolition and disposal of the C-203 (aboveground structure) outside of the FFA/CERCLA process contingent upon the fact that no additional changes have occurred that would affect the CERCLA determination of the facility prior to demolition.
- All applicable laws, regulations, and DOE procedures/protocols will be followed to ensure the demolition and disposal occurs in a safe, compliant manner, including conducting additional radiological characterization through confirmation radiological surveys (as necessary) to support demolition and waste disposition.
- Document the removal of the C-203 facility in the appropriate annual SMP revision.
- The future evaluation conducted for GA 14 will further evaluate the threat of release associated with the concrete pad/soils from the C-203 facility.



# C-203 Emergency Vehicle Shelter

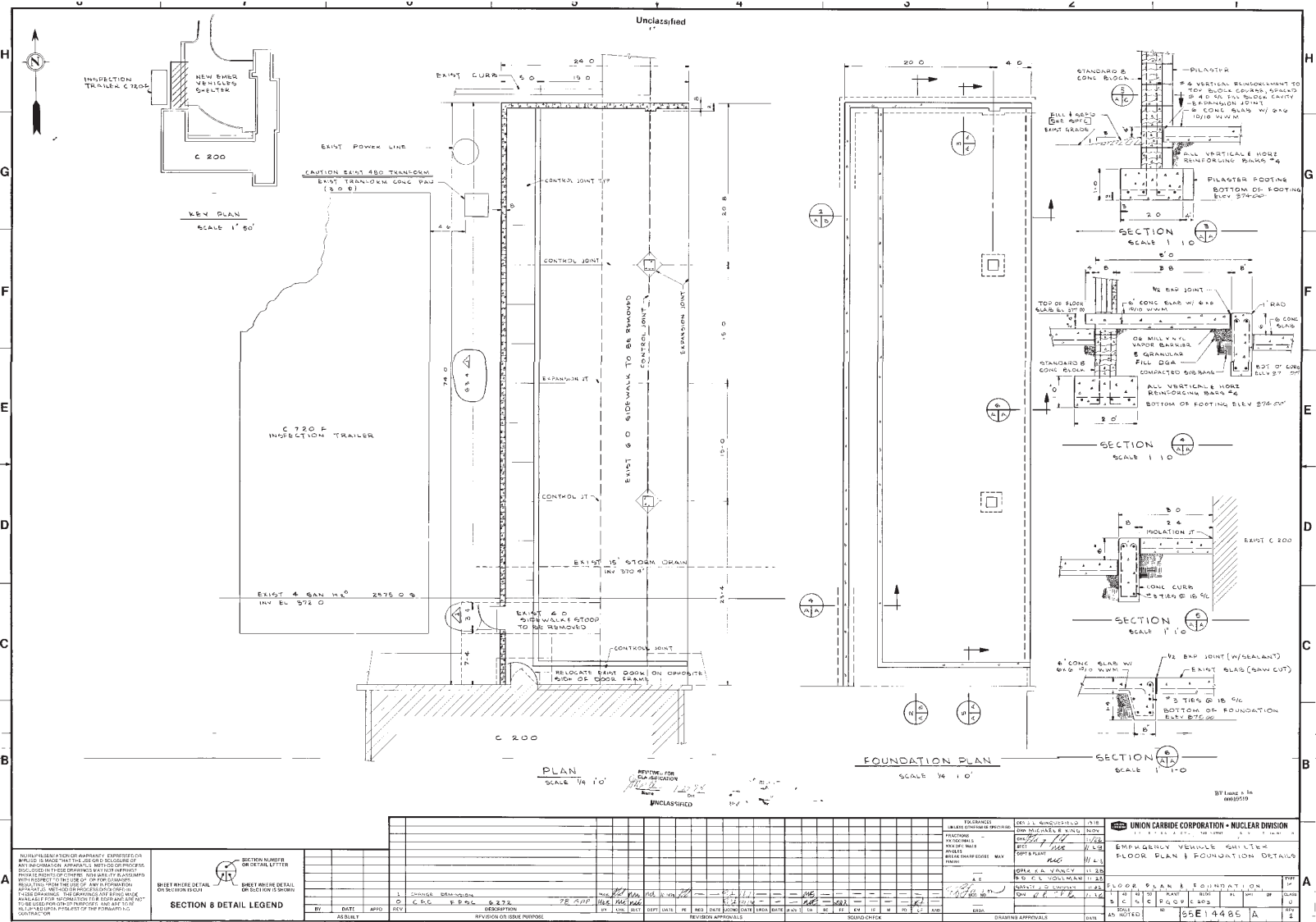
BACKUP INFORMATION

# C-203 Emergency Vehicle Shelter – Engineering Drawings



C5E-17409-B00, Rev 0

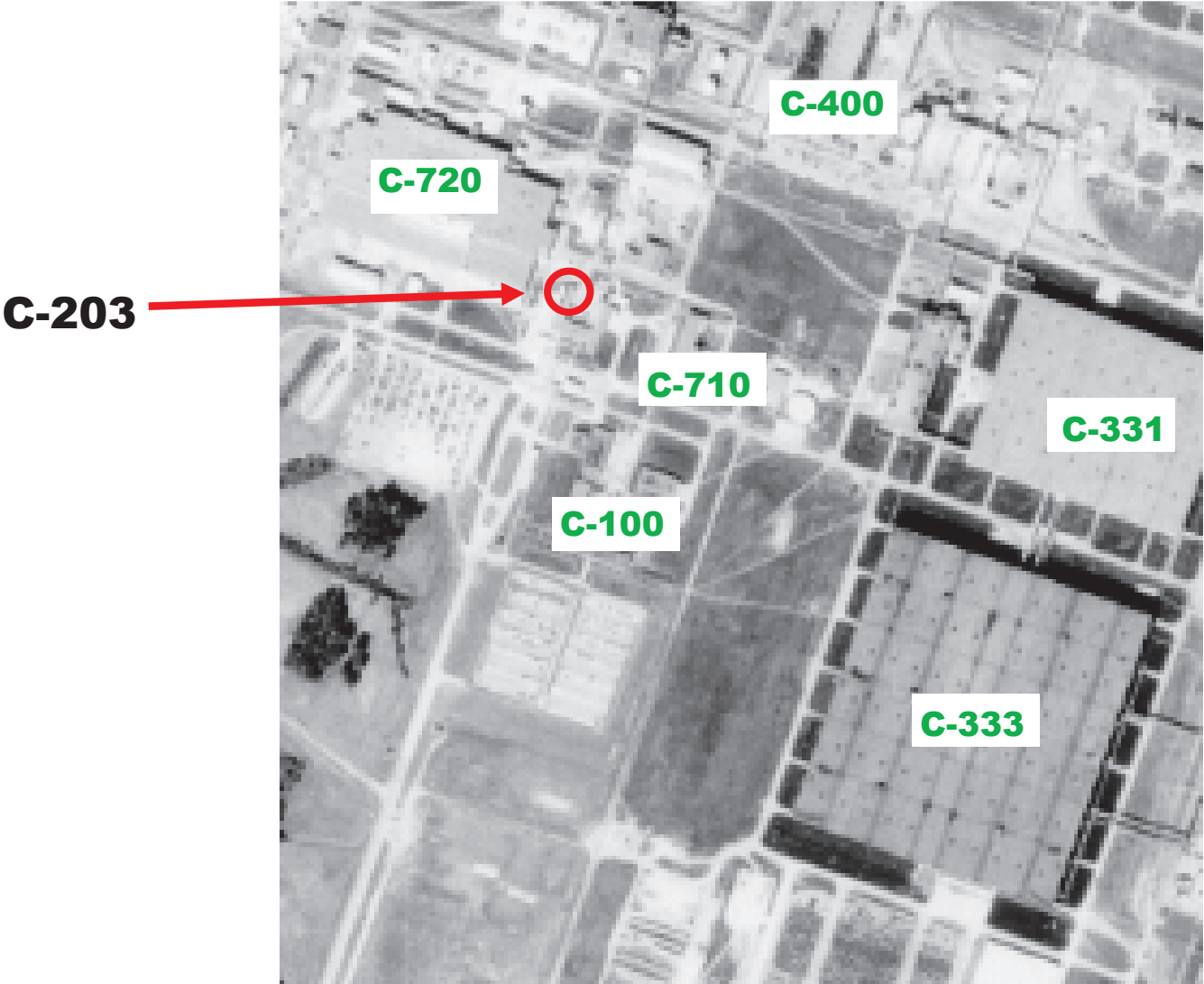
# C-203 Emergency Vehicle Shelter – Engineering Drawings



55E14485-A, Rev 1



# C-203 Emergency Vehicle Shelter (Aerial Photograph)



Modified from Aerial Photo: September 28, 1981