



## Department of Energy

Portsmouth/Paducah Project Office  
1017 Majestic Drive, Suite 200  
Lexington, Kentucky 40513  
(859) 219-4000

JUN 26 2015

Ms. Julie Corkran  
Federal Facility Agreement Manager  
U.S. Environmental Protection Agency, Region 4  
61 Forsyth Street  
Atlanta, Georgia 30303

PPPO-02-2981696-15

Ms. April Webb  
Acting Interim Federal Facility Agreement Manager  
Division of Waste Management  
Kentucky Department for Environmental Protection  
200 Fair Oaks Lane, 2<sup>nd</sup> Floor  
Frankfort, Kentucky 40601

Dear Ms. Corkran and Ms. Webb:

**TRANSMITTAL OF THE REVISED METHODS FOR CONDUCTING RISK ASSESSMENTS AND RISK EVALUATIONS AT THE PADUCAH GASEOUS DIFFUSION PLANT, PADUCAH, KENTUCKY, VOLUME 2. ECOLOGICAL (DOE/LX/07-0107&D2/R2/V2)**


Reference: Letter from J. Woodard to J. Corkran and A. Webb, "Transmittal of the Updated Methods for Conducting Risk Assessments and Risk Evaluations at the Paducah Gaseous Diffusion Plant, Paducah, Kentucky, Volume 2. Ecological (DOE/LX/07-0107&D2/R1/V2)," (PPPO-02-29660762-15), dated May 28, 2015

Please find enclosed the revised *Methods for Conducting Risk Assessments and Risk Evaluations at the Paducah Gaseous Diffusion Plant, Paducah, Kentucky, Volume 2. Ecological*, DOE/LX/07-0107&D2/R2/V2. Included are also a comment response summary and redlined pages showing changes that address the comments received via letter on June 8, 2015, and updated comments via e-mail on June 10, 2015, from the Kentucky Department for Environmental Protection. The U.S. Environmental Protection Agency, Region 4, had no comments on the document.

The U.S. Department of Energy requests approval of the subject document for use no later than July 24, 2015.

If you have any questions or require additional information, please contact Rich Bonczek at (859) 219-4051.

Sincerely,

  
Jennifer Woodard  
Paducah Site Lead  
Portsmouth/Paducah Project Office

Enclosures:

1. Revised Ecological Risk Methods Document
2. Redlined Revised Pages
3. Comment Response Summary

e-copy w/enclosures:

april.webb@ky.gov, KDEP/Frankfort  
corkran.julie@epa.gov, EPA/Atlanta  
craig.jones@lataky.com, LATA/Kevil  
fredrick.tim@epa.gov, EPA/Atlanta  
gaye.brewer@ky.gov, KDEP/PAD  
jennifer.woodard@lex.doe.gov, PPPO/PAD  
jeri.higginbotham@ky.gov, KDEP/Frankfort  
jerri.martin@ky.gov, KDEP/Frankfort  
joseph.towarnicky@lataky.com, LATA/Kevil  
karen.walker@lataky.com, LATA/Kevil  
latacorrespondence@lataky.com, LATA/Kevil  
leanne.garner@lataky.com, LATA/Kevil  
leo.williamson@ky.gov, KDEP/Frankfort  
mark.duff@lataky.com, LATA/Kevil  
mike.guffey@ky.gov, KDEP/Frankfort  
myrna.redfield@lataky.com, LATA/Kevil  
nathan.garner@ky.gov, KYRHB Frankfort  
pad.dmc@swiftstaley.com, SSI/Kevil  
reinhard.knerr@lex.doe.gov, PPPO/PAD  
richard.bonczek@lex.doe.gov, PPPO/LEX  
richards.jon@epa.gov, EPA/Atlanta  
stephaniec.brock@ky.gov, KYRHB Frankfort  
thomas.brett@epa.gov, EPA/Atlanta

DOE/LX/07-0107&D2/R2/V2

**Methods for Conducting Risk  
Assessments and Risk Evaluations  
at the Paducah Gaseous Diffusion Plant  
Paducah, Kentucky**

**Volume 2. Ecological**



**CLEARED FOR PUBLIC RELEASE**

**Methods for Conducting Risk  
Assessments and Risk Evaluations  
at the Paducah Gaseous Diffusion Plant  
Paducah, Kentucky**

**Volume 2. Ecological**

Date Issued—June 2015

Prepared for the  
U.S. DEPARTMENT OF ENERGY  
Office of Environmental Management

Managed by  
LATA ENVIRONMENTAL SERVICES OF KENTUCKY, LLC  
managing the  
Environmental Management Activities at the  
Paducah Gaseous Diffusion Plant  
under contract DE-AC30-10CC40020

**CLEARED FOR PUBLIC RELEASE**

**THIS PAGE INTENTIONALLY LEFT BLANK**

# CONTENTS

FIGURES.....	v
TABLES .....	v
ACRONYMS.....	vii
EXECUTIVE SUMMARY .....	ES-1
1. INTRODUCTION.....	1-1
2. DESIGNING AND CONDUCTING ECOLOGICAL RISK ASSESSMENTS AT PGDP.....	2-1
2.1 SCOPING FOR ECOLOGICAL EVALUATION.....	2-1
2.2 SCREENING-LEVEL RISK ASSESSMENT (STEPS 1 AND 2) .....	2-3
2.2.1 Steps 1 and 2 Uncertainties .....	2-5
2.2.2 Use of Steps 1 and 2.....	2-5
2.2.3 Reporting Steps 1 and 2.....	2-6
2.3 ERA PROBLEM FORMULATION (STEP 3) .....	2-6
2.3.1 Reevaluation of COPECs (Step 3a).....	2-6
2.3.2 ERA Study Focus and Scope (Step 3b).....	2-11
2.3.3 Step 3 Uncertainties.....	2-14
2.3.4 Use of Step 3 .....	2-14
2.3.5 Reporting Step 3.....	2-17
2.4 ERA STUDY DESIGN AND DATA QUALITY OBJECTIVES (STEP 4) .....	2-17
2.4.1 Study Design—Exposure and Effects Measurements .....	2-17
2.4.2 DQO Process .....	2-20
2.4.3 Uncertainties of Step 4 .....	2-20
2.4.4 Use of Step 4 .....	2-20
2.4.5 Reporting Step 4.....	2-21
2.5 VERIFICATION OF FIELD SAMPLING DESIGN (STEP 5).....	2-21
2.6 SITE INVESTIGATION AND DATA ANALYSIS (STEP 6).....	2-21
2.7 RISK CHARACTERIZATION (STEP 7).....	2-21
2.7.1 Risk Estimation .....	2-22
2.7.2 Risk Description.....	2-22
2.7.3 Step 7 Uncertainties.....	2-23
2.7.4 Use of Step 7 .....	2-23
2.7.5 Reporting Step 7.....	2-23
2.8 RISK MANAGEMENT (STEP 8) .....	2-23
2.9 SUMMARY OF ERA PROCESS .....	2-23
3. INPUT TO DECISION DOCUMENTS .....	3-1
3.1 FEASIBILITY STUDY .....	3-1
3.2 NO FURTHER ACTION DECISION DOCUMENTS .....	3-1
3.3 PROPOSED PLAN .....	3-2
3.4 RECORD OF DECISION .....	3-2
3.5 FIVE-YEAR REVIEW.....	3-3
4. REFERENCES.....	4-1

APPENDIX A:	ENGINEERING DRAWINGS .....	A-1
APPENDIX B:	AREA SOIL BORING AND MIP BORING LOGS.....	B-1
APPENDIX C:	ENGINEERING SPECIFICATIONS .....	C-1
APPENDIX D:	MEMORANDUM: GROUNDWATER EXTRACTION WELL REQUIREMENT, BUILDING C-400 PHASE IIB TREATABILITY STUDY, PADUCAH GASEOUS DIFFUSION PLANT, PADUCAH, KENTUCKY .....	D-1
APPENDIX E:	CHECKLIST FOR ECOLOGICAL ASSESSMENT/SAMPLING .....	E-1
APPENDIX F:	KENTUCKY ECOLOGICAL SCREENING VALUES .....	F-1

## FIGURES

1. EPA Eight-Step Process for Designing and Conducting ERAs ..... 2-2
2. Example of a Conceptual Site Model of Exposure Pathways for Ecological Receptors..... 2-15
3. Example of a Foodweb for Wildlife Receptors ..... 2-16

## TABLES

1. Model Parameters for Calculating Preliminary Hazard Quotients for PGDP ERAs..... 2-9
2. Generic Assessment Endpoints for PGDP ERAs ..... 2-12



**THIS PAGE INTENTIONALLY LEFT BLANK**

## ACRONYMS

ADD	average daily dose
ASTM	American Society for Testing and Materials
AUF	area use factor
BAF	bioaccumulation factor
BCF	bioconcentration factor
BRA	baseline risk assessment
CERCLA	Comprehensive Environmental Response, Compensation, and Liability Act
COC	contaminant of concern
COPEC	chemical of potential ecological concern
COPC	chemical of potential concern
CSM	conceptual site model
DOE	U.S. Department of Energy
DQO	data quality objective
EPA	U.S. Environmental Protection Agency
ERA	ecological risk assessment
ERAWG	Ecological Risk Assessment Working Group
ERED	Environmental Residue-Effects Database
FS	feasibility study
GLWQI	Great Lakes Water Quality Initiative
HQ	hazard quotient
KDEP	Kentucky Department for Environmental Protection
LOAEL	lowest observed adverse effect level
MED	Mid-Continent Ecology Division
NFA	no further action
NRWQC	National Recommended Water Quality Criteria
NOAEL	no observed adverse effect level
OREIS	Oak Ridge Environmental Information System
PAH	polycyclic aromatic hydrocarbon
PCBRes	PCB Residue Effects Level Database
PGDP	Paducah Gaseous Diffusion Plant
RAIS	Risk Assessment Information System
RCRA	Resource Conservation and Recovery Act
RI	remedial investigation
ROD	record of decision
SAP	sampling and analysis plan
SMDP	scientific/management decision point
T&E	threatened and endangered
TCL	target cleanup level
TRV	toxicity reference value
UCL	upper confidence limit
WWAH	Warm Water Aquatic Habitat

**THIS PAGE INTENTIONALLY LEFT BLANK**

## EXECUTIVE SUMMARY

An Ecological Risk Assessment Working Group (ERAWG) was chartered in April 2000 to develop effects-based threshold concentrations for no-action and action decisions and to develop risk assessment and analysis methods to support decision making for sites requiring further evaluation and to support verification that cleanup goals have been reached following implementation of a response action. In 2008, another ERAWG comprised of representatives from the Kentucky Department for Environmental Protection (KDEP), U.S. Environmental Protection Agency (EPA), and U.S. Department of Energy was assembled to update the document in accordance with new guidance. In 2014, the Paducah Risk Assessment Working Group included ecological evaluations in their discussions and provided updates to this document.

The ERAWG agreed that the overall process of designing and conducting ecological risk assessments (ERAs) would continue to follow an eight-step process concordant with current EPA Superfund guidance, *Ecological Risk Assessment Guidance for Superfund: Process for Designing and Conducting Ecological Risk Assessments, Interim Final*. This document is not intended to be prescriptive, rather it is meant to be a guidance document describing the ERA process for Paducah Gaseous Diffusion Plant (PGDP). The ERAWG agreed upon sources and types of published data, model parameters, and methods for obtaining site-specific data that are required in various steps of the ERA process, and these are described. Revision 1 of this document incorporates updates to the no-action levels and provides additional information on guidance from EPA and KDEP issued after the development of the initial version of this document.

This ERA guidance document describes the input from ecological risk assessors that is required for PGDP decision documents. Ecological risk input to decision documents includes summaries of ERA and screening results, evaluations of the adverse effects on ecological receptors of the proposed remedial actions and the effectiveness of proposed exposure controls, and the requirements of monitoring plans.

**THIS PAGE INTENTIONALLY LEFT BLANK**

# 1. INTRODUCTION

This document presents guidance for designing and conducting ecological risk assessments (ERAs) and related ecological risk analyses at the Paducah Gaseous Diffusion Plant (PGDP) in Paducah, Kentucky. This ecological risk guidance reflects the consensus of the PGDP Ecological Risk Assessment Working Group (ERAWG). The original ERAWG chartered in April 2000, was comprised of representatives of the Kentucky Department for Environmental Protection (KDEP), Kentucky Department of Fish and Wildlife Resources, U.S. Environmental Protection Agency (EPA), U.S. Fish and Wildlife Service, and U.S. Department of Energy (DOE). The charter directed the ERAWG to reach consensus on (1) criteria to support no-action and remedial action decisions and (2) risk assessment and analysis methods for sites requiring evaluation and verification. The ERAWG assembled to update this document in accordance with new guidance in 2008 was comprised of representatives of KDEP, EPA, and DOE. By documenting ERAWG consensus on decision criteria, guidelines, and methods, this guidance incorporates the requirements of the Commonwealth of Kentucky and EPA and promotes prompt approval of ecological risk plans and reports for PGDP sites. In 2014, the Paducah Risk Assessment Working Group included ecological evaluations in their discussions and provided updates to this document.

This document is not intended to be prescriptive, rather it is meant to be a guidance document describing the ERA process for PGDP. This consensus guidance supplements existing guidance for conducting risk assessment activities at PGDP. For ERAs at PGDP sites, this ERAWG consensus guidance is similar in many areas to previous documents but takes precedence over these previous documents when they differ. The PGDP ERA method document supplements and is concordant with existing state and federal guidance documents. The methods in this PGDP ERA methods document apply to both source and integrator<sup>1</sup> units at PGDP and remedial activities being conducted under the Comprehensive Environmental Response, Compensation, and Liability Act of 1980 (CERCLA) and the Resource Conservation and Recovery Act of 1976 (RCRA) regulations. ERAs for PGDP source or integrator units that were or are currently being conducted according to earlier guidance are expected to be consistent with the initial steps of the ERA process as described in this PGDP ERA methods document. If additional evaluation is required for these sites to support risk-management decisions, those evaluations are expected to conform to this guidance.

This document presents the updated ERAWG-consensus criteria values as well as guidance for designing and conducting risk assessments and related ecological risk analysis activities supporting risk management decisions at PGDP. The eight-step process to be followed by ERAs for all PGDP sites is described in Chapter 2. Screening benchmarks for soil, surface water, and sediment are provided. These benchmarks are for use in all ERAs conducted in accordance with this guidance. Chapter 2 includes model receptors and values of exposure parameters for use at all PGDP sites and guidance on selecting toxicity reference values (TRVs). Guidance is also provided for the conduct, use, and reporting of each of the eight steps of PGDP ERAs. Chapter 3 describes the data, results, and information about ecological risk that should be included in CERCLA and RCRA decision documents for PGDP sites.

---

<sup>1</sup> Integrator units are those units or areas that accumulate contaminants from source units or areas.

**THIS PAGE INTENTIONALLY LEFT BLANK**

## **2. DESIGNING AND CONDUCTING ECOLOGICAL RISK ASSESSMENTS AT PGDP**

The 2001 ERAWG reached consensus on specific elements potentially required for all ERAs at PGDP, including specific decision criteria, such as screening benchmarks; model receptors, exposure assumptions, and parameters for preliminary risk calculations; and formats for assessment endpoints and ERA reports. PGDP ERA rules are consensus statements clarifying potentially important guidelines. The ERAWG also agreed that ERAs at PGDP must follow an eight-step process concordant with the EPA eight-step process for designing and conducting ERAs at Superfund sites (EPA 1997a). The review by the 2008 ERAWG confirmed the use of the eight-step process and updated some aspects of this guidance with new ecological risk information and screening levels. The EPA eight-step ERA process leading to scientific/management decision points (SMDPs) is illustrated in Figure 1.

The eight-step process for ERAs at PGDP agreed upon by the ERAWG supplements the EPA's ERA process (EPA 1997a). Although the names of the eight steps are identical, some of the activities within the steps are different. This site-specific consensus document specifies where the PGDP process differs slightly from the EPA process in the sequencing of activities. Where this document is silent, EPA governs (EPA 1997a). A description of the eight-step process, including implementation of Data Quality Objectives (DQOs), and directions for applying the process to ERAs at PGDP are given below.

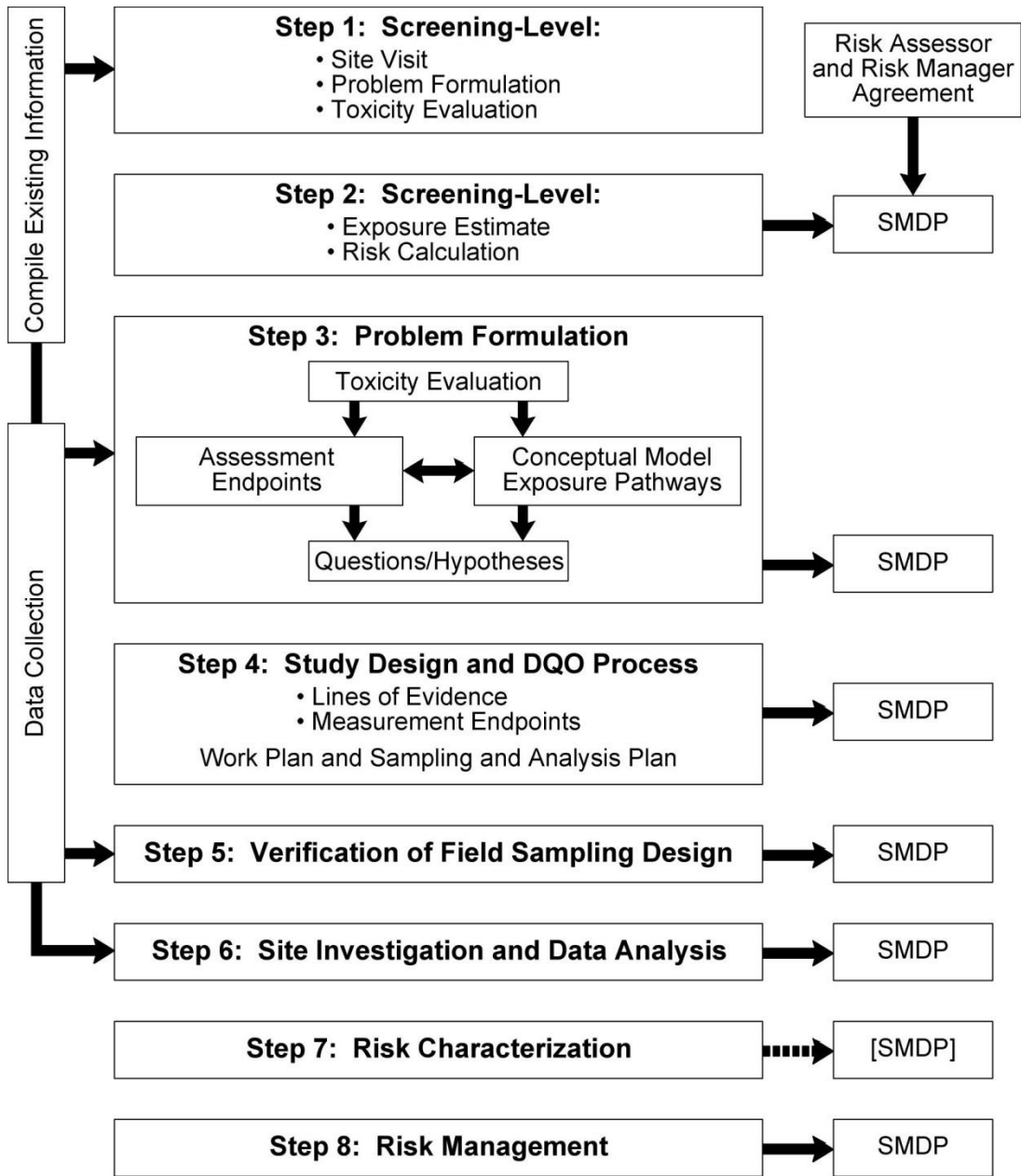
The PGDP ERA process should be complete to justify a decision to remediate a site based on ecological risks alone. If a decision is made to remediate a site before the PGDP ERA process is complete, such as when high risk to human health has been established during scoping activities (DOE 2014), then evaluations of the protectiveness of proposed remedial actions for ecological receptors will be more uncertain. Given the greater uncertainty when proceeding with remediation before the PGDP ERA process is complete, remedial goal options will be based on more conservative exposure and effect assumptions, and site-specific target cleanup levels (TCLs) likely will be lower and more costly to achieve than would result following completion of the PGDP ERA process. A decision that no further action is necessary to protect ecological receptors, on the other hand, may be justified following the early steps of the PGDP ERA process (Steps 1, 2, and 3).

### **2.1 SCOPING FOR ECOLOGICAL EVALUATION**

Prior to ecological evaluation of a site, a scoping meeting should be conducted with ecological risk assessors from the regulatory agencies. Some aspects of ecological evaluation, even at a screening level, are site-specific, and discussions regarding the site held prior to the evaluation will focus resources and efforts in the appropriate direction. The scoping meeting should include discussion of the presentation of the dataset for the ERA and the format for any requested electronic copies of the data to be included with the ERA.

The consensus of the ERAWG is that PGDP sites with any amount of vegetation are potential nesting or feeding habitat for ecological receptors and, thus, require at least a screening-level risk assessment. Some sites may not require a screening for ecological risk from soil because no habitat and no exposure pathways for ecological receptors currently exist at the site. Sites meeting the general guidelines here can be considered for exclusion from the screening process. Each site meeting the criteria still needs to be discussed with risk managers and regulators, as these criteria are not prescriptive and some sites meeting them still may need to undergo evaluation.





Source: EPA 1997a. *Ecological Risk Assessment Guidance for Superfund: Process for Designing and Conducting Ecological Risk Assessments, Interim Final.*

**Figure 1. EPA Eight-Step Process for Designing and Conducting ERAs**

Sites considered for exclusion should have all of the following characteristics:

- All areas of soil contamination shallower than five ft are covered with concrete, pavement, or a building.
- Routes for off-site migration of soil also are incomplete due to the presence of concrete, pavement, or a building.
- Features and structures preventing the existence of complete pathways are reasonably expected to remain in place.

Groundwater at these sites still should undergo screening for ecological risk, as described in Section 2.3.

## **2.2 SCREENING-LEVEL RISK ASSESSMENT (STEPS 1 AND 2)**

Steps 1 and 2 of the ERA process at PGDP constitute a screening-level risk assessment. The purpose of the screening-level risk assessment is to evaluate whether existing data justify a decision that site contaminants do not pose a risk to ecological receptors, or whether additional evaluation is necessary. Because the consequences of incorrectly deciding that there is risk (further evaluation) when there is no risk are less severe than the consequences of incorrectly concluding there is no risk (not reducing or eliminating risk) when there is risk, the screening-level risk assessment is designed to minimize the likelihood of the latter, false negative error. That is, the screening-level risk assessment is intentionally conservative (EPA 1997a). If no potential for risk is identified in a conservative screening-level risk assessment, then risk managers can confidently conclude that no further action (i.e., investigation, remediation) is required at the site. A screening-level risk assessment is an appropriate risk analysis during scoping, prioritization, and work plan development activities prior to the remedial investigation (RI)/feasibility study (FS) or equivalent.

Steps 1 and 2 of the ERA process contain the following elements:

- Site visit (if needed),
- Screening-level problem formulation [preliminary conceptual site model (CSM)],
- Screening-level effects evaluation (toxicity threshold benchmarks),
- Screening-level exposure estimate (site maximum concentration data), and
- Screening-level risk calculation (site concentration data screens).

In Step 1 of ERAs for PGDP sites, ecological risk assessors use available information to develop a preliminary CSM. Available information includes observations made during site reconnaissance, historical documents, existing data, and professional judgment of other technical experts who are familiar with the site (e.g., biologists, hydrogeologists, chemists, and engineers). The preliminary CSM describes the environmental setting of the individual site, the site's immediate surroundings (as opposed to the larger PGDP), and the contaminants known to exist at the site. The preliminary CSM should identify fate and transport mechanisms by which site contaminants potentially move off-site, and briefly discuss the ways that site contaminants act on likely receptors.

Based on the preliminary CSM, the ecological risk assessors identify the potentially complete exposure pathways and endpoints for the screening assessment. The potentially contaminated source media at the site, such as soil, surface water, sediment, and groundwater, are described, and the classes of receptors potentially exposed to these media are identified. As determined in the scoping described in Section 2.1, only those source media that are potentially contaminated and to which receptors are potentially exposed

need to be screened in Steps 1 and 2. Subsurface soils to a depth of five ft should be screened if surface soil at a site likely will be removed and not replaced or if site-specific information indicates that ecological receptors are exposed to potentially significant levels of contamination (e.g., burial grounds and waste piles). For PGDP ERAs, surface soil is defined as no deeper than 0–1 ft below ground surface (bgs). For ERAs, use of samples collected in the 0–6-inch bgs depth is preferred over the 0–1-ft depth when those results are available. This shallower depth range should be considered when additional sampling of a unit is done for the purposes of ecological investigation.

The exposure pathways and endpoints for the site specify which ecological effects data are required. For PGDP ERAs, the screening-level effects data are screening-level benchmarks, which are concentrations of substances in abiotic media that are associated with little to no adverse ecological effect. The screening benchmarks used to make the screening-level risk calculations are the PGDP no further action (NFA) levels. There are NFA levels for substances in soil, sediment, and surface water. Screening benchmarks are also available for some classes of chemicals [e.g., total polycyclic aromatic hydrocarbons (PAHs)]. If groundwater potentially discharges to surface water, groundwater concentrations are compared to surface water screening benchmarks. There are not any NFA levels for constituents in air. PGDP NFA levels for soil, sediment, and surface water are described in Appendix A.

In Step 2 of ERAs at PGDP sites, the maximum site concentrations for substances in a given exposure medium are compared to the screening-level benchmarks for those substances [i.e., PGDP NFA levels (PGDP ERA Rule 2)]. For the NFA screen at PGDP sites, the maximum site concentration for a substance reported as detected in any sample is the larger of the maximum detected concentration and one half of the maximum reported detection limit for the substance in samples reported as nondetect. Therefore, it is highly recommended that there be some existing data with detection limits below the NFA values. If existing data do not have adequate detection limits, new data may be collected to replace them. Existing data should be considered valid until newer data are collected to replace them.

Site concentration data for PGDP sites are those data present in the Portsmouth/Paducah Project Office Environmental Geographic Analytical Spatial Information System (PEGASIS). All relevant concentration data for a site should be gathered and entered into Paducah's Oak Ridge Environmental Information System (OREIS) before conducting the screen. Although data on the extent of contamination need not be complete before screening, representative samples are required and the nature of the contamination at the site should be defined. If sampling results are suspected of not being representative of the site or data quality is unsatisfactory (e.g., detection limits routinely exceed NFA values), then additional data may be required for the screening evaluation needed to reach the Step 2 SMDP. Data sets that have been evaluated and accepted for use in human health risk assessments for PGDP sites are acceptable for use in ERAs; however, these data should not be screened against background and human health preliminary remediation goals, and essential nutrients should not be eliminated before conducting the ecological NFA screen. If existing data are not used, the reasons for not using the data should be explained.

NFA levels are available for some groups of substances for some media. For Steps 1 and 2 of PGDP ERAs, the maximum concentrations for all members of a group detected at a site and the reported detection limits for all members of the group reported as nondetected are summed to give the group total concentration. The group total concentration is compared to the screening benchmark for the group (e.g., total PAHs) when at least one member of the group is detected. If toxicity equivalency factors for effects on ecological receptors are available for a group of related chemicals, then they should be used to adjust concentrations when calculating group totals or to compare individual chemicals against the standard benchmark.

<p><b>PGDP ERA Rule 1</b>—Assume shallow groundwater discharges to surface water. Provide justification that groundwater does not discharge to surface water if groundwater data are not screened in Steps 1 and 2.</p>
---

Screens are conducted for surface soil, sediment, surface water, and groundwater (if groundwater potentially discharges to surface water) at the site if they potentially result in exposure to ecological receptors. The comparison of site concentrations to screening benchmarks for abiotic media assumes that the primary exposure routes for receptors at the site are the same as those for receptors at the test site or in the lab experiments that generated the data used to derive the screening benchmarks. These screens constitute the screening-level risk calculations and should include calculation of the screening hazard quotient (HQ). If the site maximum concentration (the numerator) is greater than the screening benchmark (the denominator), then the substance has an  $HQ > 1$  for that medium. Due to the conservative nature of the NFA levels and their relationship to more general endpoints than may exist at the site, the HQs generated during the screening step should be referred to as screening HQs to distinguish them from the receptor-specific HQs generated during a baseline ERA.

**PGDP ERA Rule 2**—In Step 2, compare the maximum site concentrations for substances in a given exposure medium to the screening-level benchmarks and generate screening HQs. If detected in at least one sample, the maximum site concentration is the larger of the maximum detected concentration and one-half of the maximum reported detection limit.

Chemicals with known additive synergistic effects or that bioaccumulate are retained as chemical of potential ecological concern and evaluated further in Step 3. The list of bioaccumulating compounds is based on the list developed for the Great Lakes and is presented in Appendix A.

### **2.2.1 Steps 1 and 2 Uncertainties**

At Steps 1 and 2 of the ERA process, information will not be complete, and some constituents will not have NFA levels. There may not be site chemistry data for all classes of constituents. There may be incomplete information about what animal and plant species actually or potentially occur at the site, including threatened and endangered (T&E) species. The document recording the results of Steps 1 and 2 should discuss these uncertainties.

### **2.2.2 Use of Steps 1 and 2**

The screening results and site information for the given unit are used at the SMDP 1 to support a decision whether to continue evaluating ecological risk. If any constituent in an abiotic medium to which organisms are potentially exposed is present at a concentration exceeding the PGDP NFA level or if there is not an NFA level for a constituent, then further evaluation of the potential for risk will be required unless the decision to take an action (such as soil or sediment removal) has been made. At SMDP 1, the results of the screening evaluation should be discussed with the regulatory agencies. If constituents exceed NFA levels, there are critical data gaps, or other uncertainties at this point in the process are large enough, then additional data could be required for decision making even though no constituent exceeds an NFA level.

Another important piece of information risk managers need at the first SMDP is the nature of the habitat and ecological setting of the site. At SMDP 1, risk managers may decide that sites do not require additional evaluation, even though one or more substances are identified as chemicals of potential ecological concern (COPECs), if exposure pathways are not complete or actions will be taken to eliminate the exposure pathway. The terms chemicals of potential concern (COPCs) and COPECs are used interchangeably in this document; however, in reporting results of the evaluations described in this document, the term COPECs should be used.

### **2.2.3 Reporting Steps 1 and 2**

The documentation of Steps 1 and 2 for PGDP sites should include the following:

- Brief habitat description and map, if appropriate;
- Preliminary CSM;
- Discussion of all changes to the dataset made to refine the raw data to that used in the risk assessment;
- Tables of screening results;
- List of wildlife species actually or potentially occurring at the site, including T&E plant and animal species; and
- Discussion of uncertainties.

The discussion of the uncertainties should identify constituents for which there are not NFA levels or analytical chemistry data. Chemicals without NFA levels are automatically retained as COPECs for further evaluation in the baseline risk assessment (BRA) (Step 3a). The decision whether to collect additional data for screening, proceed with the ERA, or conduct no further evaluation or other action can be documented in the report.

When reporting risks from PGDP sites at which no surface soil samples were collected, the report needs to state the following: “The potential risk from exposure to surface soil was not quantified in this risk assessment and is, therefore, unknown. The risk from exposure to this medium was not quantified because the investigation of this medium falls outside the scope of the current investigation.” (Note that a similar caveat also will apply when considering risk from potential exposure to groundwater when data are not available because of the scope of the investigation.) Ecological assessment does not move beyond Step 2, if maximum site concentrations do not exceed their NFA levels.

## **2.3 ERA PROBLEM FORMULATION (STEP 3)**

The purpose of Problem Formulation (Step 3) is to provide sufficient information to support a risk management decision concerning the need for additional evaluation of ecological risk. Important inputs to this decision (SMDP 2) are the identification of COPECs that warrant further evaluation, an understanding of the effects of COPECs on ecological receptors, identification of complete exposure pathways by which COPECs are brought into contact with ecological receptors, and identification of assessment endpoints. The outputs of the Problem Formulation step are the final list of COPECs, assessment endpoints, and questions and hypotheses potentially requiring further evaluation in an ERA. In support of the Step 3 SMDP, the risk assessors provide their conclusions and recommendations based on professional judgment.

### **2.3.1 Reevaluation of COPECs (Step 3a)**

The further evaluation of COPECs identified in Steps 1 and 2 of the EPA eight-step process is called the “Refinement of COPECs,” and it occurs after the screen. Some evaluation of COPECs beyond the comparison with screening values appears with the results of the screening, as described in previous sections. Those evaluations should be repeated as part of the Problem Formulation step (Step 3) for the

BRA. According to EPA’s amended guidance, Step 3a of the process represents an opportunity to present a “reasoned toxicological approach for the elimination of one or more COPCs from future consideration” (EPA 2000a). The purpose of this step is to sharpen the focus of the evaluation on those COPECs that can and should be evaluated because of the potentially significant risk they pose to ecological receptors at the site.

Step 3a of ERAs for PGDP sites include the following activities:

- Compare site and background concentrations;
- Evaluate frequency and distribution of concentrations exceeding benchmarks and/or referenced site values;
- Evaluate site-specific tissue concentrations against benchmarks for direct risk to organism sampled (if available);
- Calculate preliminary HQs for bioaccumulating constituents and for selected PGDP wildlife receptors;
- Evaluate site-specific exposure data and assumptions [e.g., area use factor (AUF), ingestion rates, and diet];
- Consider alternative toxicity data and benchmarks for receptors exposed by direct contact;
- Compare site and reference concentrations; and
- Evaluate site-specific tissue concentrations (if available) to calculate risk from food chain uptake.

In contrast to the eight activities potentially included in Step 3a for PGDP ERAs, EPA explicitly identifies only one activity in this step: review and consideration of “realistic conservative” exposure assumptions (EPA 1997a). **The first four activities listed for Step 3a may be included as part of the uncertainty evaluation of the screening assessment, if this is appropriate based on the site and information available.** The last four of the eight activities generally require input from regulators and should be completed after regulatory review of the results of the screening. The eight activities potentially included in Step 3a for PGDP ERAs are briefly described here.

**Comparison of site and background.** Consistent with the Human Health Risk Methods Document (DOE 2014), the maximum detected concentration of inorganic chemicals and naturally occurring radionuclides may be compared to the background dataset for that chemical or radionuclide as presented in Appendix A of the human health document. The most recent revision of the Human Health Risk Methods Document should be used for background values. Constituents with maximum detected concentrations less than background can be eliminated from further consideration as COPECs after the initial screening.

**Frequency and distribution.** The frequency of occurrences in site samples of concentrations exceeding background criteria may be used to evaluate the extent of contamination. The representativeness of the site data set, including the number and spatial distribution of samples, should be evaluated if the frequency of exceedances is considered in Step 3a of PGDP ERAs.

**Site-specific tissue concentrations—Direct Risk to Organism.** If data is available on the concentrations in tissues within species found at a site, that data may be compared to available tissue residue benchmarks

to provide a refined screen for direct risk to that organism. Tissue residue benchmarks for assessing ecological risk should be based on “no effect” levels to the organism, not based on effects of human consumption. Tissue residue benchmarks available for the bird and mammal PGDP receptor species are presented in Table A.10 and A.11. Sources of fish tissue residue levels include the Environmental Residue-Effects Database (ERED) [located at <http://el.erdc.usace.army.mil/ered/>], the EPA PCB Residue Effects Level Database (PCBRes) [located at [http://www.epa.gov/med/Prods\\_Pubs/pcbres.htm](http://www.epa.gov/med/Prods_Pubs/pcbres.htm)], and the USEPA MED-Duluth Toxicity/Residue Database (located at [http://www.epa.gov/med/Prods\\_Pubs/tox\\_residue.htm](http://www.epa.gov/med/Prods_Pubs/tox_residue.htm)). Additional benchmarks may be obtained from scientific literature in which critical tissue residues are developed. Tissues collected for comparison should be matched to the tissue used to generate the benchmark, for example, muscle tissue for large fish or mammals, whole body for small fish, or insects, etc.

**Preliminary HQs.** Preliminary HQs are calculated for individual wildlife receptors when those receptors are present at PGDP sites. This set of preliminary HQs is based on individual receptors and differs from the screening HQs based on general endpoints that were generated during Steps 1 and 2. For ERAs at PGDP sites, the ERAWG has selected the following model wildlife receptors: arboreal insectivorous mammal, insectivorous bird, ground-dwelling insectivorous/vermivorous mammal, piscivorous mammal, piscivorous bird, granivorous mammal, granivorous bird, predatory mammal, predatory bird, and carnivorous fish. Preliminary HQs are required only for those wildlife receptor groups that occur or potentially occur at a given site. If the preliminary HQs are presented in the same document as screening Steps 1 and 2, the receptors listed in Table 1 must be used for the calculations. If the preliminary HQs are calculated during the beginning of the BRA, the receptors and parameters for the site should be scoped with the regulators prior to performing the HQ calculations to ensure that appropriate receptors are selected for the site under consideration. Preliminary HQs for model wildlife receptors should be calculated for all COPECs for which the screening HQ calculated in step 2 was greater than 1.0 as well as for all bioaccumulative COPECs (regardless of their screening HQ). All those COPECs also should be included in the food chain modeling for wildlife receptors. Food chain modeling is described in Appendix C.

The parameters for the receptor model species used to calculate preliminary HQs are given in Table 1. Parameters for model species [i.e., body weights, specific ingestion rates (kg/kg body weight/day), AUFs, and diets] should be conservative because the risk assessment for model species is meant to protect all species in the group. It is assumed that model receptors spend their entire lives and obtain 100% of their diet or drinking water at the facility (i.e., AUF equals 1). Ground-dwelling insectivorous/vermivorous mammals and insectivorous/vermivorous birds are assumed to eat only soil-dwelling invertebrates that bioaccumulate contaminants from soil. Predatory mammals and birds are assumed to eat only small mammals such as shrews that bioaccumulate contaminants from ingested soil or biota. Mammalian piscivorous predators and carnivorous fish are assumed to eat only fish. Avian piscivorous predators are assumed to eat only fish for evaluations of surface water and groundwater, and only sediment-dwelling invertebrates for evaluations of sediment. Receptors representing reptiles and amphibians are not included in this table due to the lack of risk assessment parameters for these receptors. Until values for these parameters are available, it is assumed that assessments protecting other receptors are also protective of reptiles and amphibians. The sources of values in Table 1 are provided in Appendix B.

**Table 1. Model Parameters for Calculating Preliminary Hazard Quotients for PGDP ERAs<sup>1</sup>**

<b>PGDP Model Receptor Group (PGDP Species Model)</b>	<b>Model Body Weight (kg)</b>	<b>Model Feeding Rate (kg/kg/day)</b>	<b>Water Ingestion Rate, L/kg BW-d</b>	<b>Soil/Sediment Ingestion Rate, as a % of the Food Ingestion Rate<sup>2</sup></b>	<b>Model Diet</b>
Arboreal insectivorous mammal (Little Brown Bat)	0.0075	0.48	0.16	0	Adult aquatic insects
Ground-dwelling insectivorous/vermivorous mammal (Short-tailed shrew)	0.015	0.56	0.223	3.7	Earthworms, soil-dwelling insects
Insectivorous/vermivorous bird (American woodcock)	0.15	1.16	0.10	10.4	Earthworms, soil-dwelling insects
Insectivorous/vermivorous bird (American robin)	0.0773	1.52	0.14	10.4	Earthworms, soil-dwelling insects
Insectivorous/vermivorous bird (Marsh wren)	0.0094	0.99	0.28	10.4	Earthworms, adult aquatic insects
Piscivorous mammal (Mustelid)	0.78	0.46	0.08	9.4	Fish, crayfish, etc.
Piscivorous bird (Belted kingfisher)	0.136	0.5	0.11	0.5	Fish, crayfish, etc.
Carnivorous bird (Green Heron)	0.2	0.6	0.117	2	Fish, crayfish, frogs, etc.
Omnivorous bird (Mallard duck)	1.134	0.278	0.058	11	Plant, aquatic invertebrate
Granivorous mammal ( <i>Microtus spp.</i> )	0.02	0.35	0.21	2.4	Seeds
Granivorous bird (Bobwhite quail)	0.16	0.117	0.13	10.4	Seeds
Predatory mammal (Long-tailed weasel)	0.19	0.31	0.12	2.8	Small mammals
Predatory bird (Screech owl)	0.14	0.385	0.113	2	Small mammals
Carnivorous fish (Smallmouth bass)	0.086	2.0	--	--	Invertebrates, fish

<sup>1</sup> Receptors listed may not occur at all PGDP sites. Receptors from this group that are representative of the habitats present at a particular site should be evaluated for that site. The sources of values are provided in Appendix B.

<sup>2</sup> Soil/sediment ingestion rate is calculated from a food ingestion rate in wet weight (i.e., kg WW food/kg BW-d).



Preliminary HQs for wildlife receptors are calculated using the maximum detected concentrations and the appropriate benchmarks associated with no effect [the no observed adverse effect level (NOAEL)]. For wildlife receptors, these benchmarks are TRVs expressed as a daily dose. TRVs based on NOAELs for wildlife are presented in Table A.8 in Appendix A. Published, observed, or estimated NOAELs for test species are the benchmarks for all model receptors except carnivorous fish (PGDP ERA Rule 3). Benchmarks for carnivorous fish are body burdens (tissue concentrations) associated with no adverse effect (Jarvinen and Ankley 1999). ERAs for PGDP sites will need to explain how all benchmarks are derived and selected, including NOAELs estimated from other benchmarks [e.g., lowest observed adverse effect levels (LOAELs)]. TRVs based on LOAELs for wildlife are presented in Table A.9 in Appendix A. Equations for calculating preliminary HQs are presented in Appendix C.

If site-specific tissue data or appropriate biotransfer factors derived from PGDP data are not available, conservative biotransfer factors should be compiled from sources selected in cooperation with KDEP. The ERAWG has not identified preferred biotransfer factors, but a list of bioaccumulating substances and biotransfer factors is available from the KDEP. Other possible sources of bioaccumulation factors (BAFs) are Sample et al. (1997) and the Los Alamos National Laboratory (LANL) Ecorisk database (LANL 2012). EPA has published biotransfer factors (EPA 1999a), and the PGDP ERAWG has used these values, or values derived as specified therein, for use in deriving site-specific cleanup goals for the PGDP North-South Diversion Ditch. Table C.1 lists soil-to-invertebrate BAFs and water-to-fish bioconcentration factors (BCFs) provided by KDEP and other sources. These values should be considered as example only and not as approved values. Biotransfer factors used in PGDP ERAs should be fully documented.

**PGDP ERA Rule 3**—When calculating preliminary HQs, do not scale TRVs for body weight of model receptors.

**Site-Specific Exposure Assumptions.** Site-specific exposure assumptions also may be considered in Step 3a. Preliminary HQs calculated using conservative exposure assumptions likely overestimate risk. If site-specific data are available, they can provide a more accurate preliminary risk assessment. Alternative HQs may be calculated using site-specific values for exposure parameters and compared to preliminary HQs. Site-specific exposure data include estimates of central tendency [e.g., mean and 95% upper confidence limit (UCL)].

**Alternative Benchmarks.** Alternative toxicity data and benchmarks include such values as LOAELs for wildlife receptors, National Oceanic and Atmospheric Administration and Ontario Ministry of Environment effects-based values for sediment, and lowest chronic values for aquatic biota for surface water. The LOAEL-based TRVs are presented in Table A.9.

**Reference Site Comparison.** The reference site comparison evaluates the relationship between COPEC site and reference site concentrations primarily for aquatic systems. Both the choice of reference site and the types of studies to be conducted should be scoped with regulators prior to collection of any data for toxicity and population studies. The reference site comparison is not a background screen because the reference site is used primarily for collecting media for comparison of toxicity test results between the site and the reference site and as a reference site for field data such as population studies.

The site and reference site data presented for comparison include minimum, maximum, mean, and 95% UCL concentrations; frequency of detect; detection limits; and distribution type. Because the comparison to a reference site or sites is not a strict screen, concentration data for organic compounds detected in reference site samples can be compared to site data.

**Site-Specific Tissue Concentrations-bioaccumulation.** Site-specific data that are available should be considered in Step 3a. If data are available for the concentration of constituents in plant or animal tissues, then those data may reduce the uncertainties in preliminary HQs calculated using abiotic site concentration data and generic BAFs. Available benchmarks for tissue residues in birds and mammals are presented in Table A.10 and Table A.11, respectively.

**Site-Specific Effects Data.** Other potentially useful data are TRVs derived from *in situ* toxicity and laboratory toxicity test results for site media. Toxicity data for standard laboratory test species are of limited value because these species are not necessarily as sensitive to contaminants as are native species.

For all activities conducted as part of Step 3a of PGDP ERAs, mean and 95% UCL concentrations for detected substances are calculated using ProUCL.<sup>2</sup> Site concentration data for PGDP sites are those data present in Paducah OREIS. All relevant concentration data for a site should be gathered and entered into Paducah OREIS before conducting Step 3a. Site concentration data used in ERAs and other ecological risk activities must be qualified as valid. An important consideration is the relationship between detection limits and benchmarks. Also, the appropriateness of using statistical manipulation of data must be considered in relation to the number of samples.

### 2.3.2 ERA Study Focus and Scope (Step 3b)

If any COPECs are identified at a PGDP site, the ERA process continues with Step 3b, ERA Study Focus and Scope. This is the problem formulation step for the site-specific assessment of ecological risk and should be included with the baseline ERA. Where Step 3a focuses the ERA on the subset of COPECs at a site that more likely poses a risk to ecological receptors, Step 3b narrows and sharpens the focus of the required site investigation onto the important exposure pathways and receptors that are potentially exposed to these COPECs. Step 3b of the ERA process includes the following activities:

- Summarizing ecotoxicity of COPECs,
- Identifying assessment endpoints,
- Describing habitat,
- Presenting the CSM, and
- Specifying risk questions and hypotheses for the site.

These elements are common to the EPA eight-step ERA process (EPA 1997a; EPA 2000a).

**Ecotoxicity Summaries.** Ecotoxicity summaries of COPECs in Step 3b are meant to be brief profiles. These profiles support the selection of assessment endpoints; therefore, they should briefly describe the toxicity of the COPECs to groups of organisms (communities, guilds) and the COPECs' bioaccumulation potential. Toxicity profiles for COPECs should include a discussion of published data on the relative toxicity to various groups of organisms when exposed by the same routes. There are two primary exposure routes of interest for potential receptor groups at PGDP sites:

---

<sup>2</sup> If results from ten or more samples are available, then the most recent version of EPA's ProUCL software will be used to determine the 95% UCL concentration. The value selected as the 95% UCL concentration will be the value recommended by ProUCL, noted as the "Suggested UCL to Use." EPA's ProUCL software (available at [www.epa.gov/osp/hstl/tsc/software.htm](http://www.epa.gov/osp/hstl/tsc/software.htm)) incorporates a number of different distributional tests that may be used to perform the distributional tests and calculates the most appropriate 95% UCL (EPA 2013). An exception to use of ProUCL is when a sample contains a small fraction of nondetects (i.e., no more than 10–15%). In this case, simple substitution of half the reporting limit is generally adequate (EPA 2009).

- Direct contact for plants, soil-dwelling invertebrates, sediment-dwelling invertebrates, and aquatic biota; and
- Ingestion by consumers, such as granivorous (seed-eating) birds, and carnivorous birds and mammals.

Predators include arboreal insectivorous mammals, insectivorous birds, ground-dwelling insectivorous/vermivorous mammals, piscivorous mammals, piscivorous birds, predatory mammals, predatory birds, and carnivorous fish.

**Assessment Endpoints.** Assessment endpoints are valued ecological resources that are potentially exposed and susceptible to the COPECs at a site. Policy goals are given in Table 2, along with generic assessment endpoints. Assessment endpoints are the species populations or communities at a site that are investigated to evaluate the risk from exposure to the COPECs. Resources that are not at risk because they are not exposed or not susceptible to the adverse effects of the COPECs should not be assessed. Because not all populations or communities at a site can be evaluated in an ERA, care must be taken in selecting assessment endpoints. Assessment endpoints for PGDP sites should be selected after consulting members of the ERAWG and other stakeholders to ensure that the site investigation addresses the important risk questions. This is one of the critical decisions made at the SMDP following Step 3b, and concurrence on the assessment endpoints for PGDP sites should be obtained from natural resources trustees and parties to the Federal Facility Agreement.

**Table 2. Generic Assessment Endpoints for PGDP ERAs**

<b>Policy Goals</b>	<b>Assessment Endpoints</b>
<i>The conservation of threatened and endangered species and their habitats.</i>	No adverse impact to any federal- or state-designated threatened or endangered species <sup>1</sup> (flora and fauna) and no adverse impacts to their critical habitats.
<i>The protection of terrestrial populations, communities, and ecosystems.</i>	<p>Protection of soil-invertebrate populations from negative impacts on nutrient cycling resulting from exposure to COPECs in surface soil.</p> <p>Protection of omnivorous mammal populations from negative impact on survival and reproduction resulting from exposure to COPECs in surface soil.</p> <p>Protection of herbivorous mammal populations from negative impact on survival and reproduction resulting from exposure to COPECs in surface soil.</p> <p>Protection of carnivorous mammal populations from negative impact on survival and reproduction resulting from exposure to COPECs in exposure media.</p> <p>Protection of amphibian and reptile populations from negative impact on survival and reproduction resulting from exposure to COPECs in exposure media.</p> <p>Protection of herbivorous bird populations from negative impact on survival and reproduction resulting from exposure to COPECs in exposure media.</p> <p>Protection of omnivorous bird populations from negative impact on survival and reproduction resulting from exposure to COPECs in exposure media.</p> <p>Protection of carnivorous bird populations from negative impact on survival and reproduction resulting from exposure to COPECs in exposure media.</p>

**Table 2. Generic Assessment Endpoints for PGDP ERAs (Continued)**

<b>Policy Goals</b>	<b>Assessment Endpoints</b>
<i>The protection of aquatic populations, communities, and ecosystems.</i>	Protection of benthic invertebrate populations from negative impact on survival and reproduction resulting from exposure to COPECs in sediment and surface water.
	Protection of amphibian and reptile populations from negative impact on survival and reproduction resulting from exposure to COPECs in sediment and surface water.
	Protection of fish populations from negative impact on survival and reproduction resulting from exposure to COPECs in sediment and surface water.
	Protection of mammal populations that feed on aquatic organisms from negative impact on survival and reproduction resulting from exposure to COPECs in sediment and surface water.
	Protection of bird populations that feed on aquatic organisms from negative impact on survival and reproduction resulting from exposure to COPECs in sediment and surface water.
	Protection of bird populations that feed on aquatic vegetation from negative impact on survival and reproduction resulting from exposure to COPECs in sediment and surface water.

<sup>1</sup> If threatened and endangered species not included on the federal list are listed by the Commonwealth of Kentucky.

The assessment endpoints for PGDP sites are stated in terms of the survival and successful reproduction of guilds or communities at the site. For example,

*Protection of carnivorous mammal populations at the site from negative impact on survival and reproduction from exposure to the COPECs in surface soil.*

Assessment endpoints can be stated as in terms of adverse effects on populations or on communities. Adverse effects on populations can be inferred from measures related to impaired reproduction, growth, and survival. Adverse effects on communities can be inferred from changes in community structure or function. The measures used in BRAs for wildlife receptors at PGDP are TRVs, laboratory toxicity tests, and tissue residue concentrations related to impaired reproduction, growth, and survival. These measures reflect assessment endpoints for populations. If a T&E or otherwise legally protected species is an assessment endpoint, then the endpoint should be stated in terms of survival and reproduction of receptors.

If an individual COPEC or class of COPECs can be identified as the potential cause of risk to an endpoint receptor, then the COPEC can be explicitly named in the assessment endpoint. The ERAWG recommends that the assessment endpoint explicitly name the source medium or media containing the COPECs so as to link the assessment endpoint to potential remedial action decisions, because remedial actions are applied to source media.

Assessment endpoints for ERAs at PGDP sites must be justified on the basis of the following factors:

- The COPECs that are present and their concentrations,
- Mechanisms of toxicity of the COPECs to different groups of organisms,
- Ecologically relevant receptor groups that are potentially sensitive or highly exposed to the COPECs, and
- Potentially complete exposure pathways from source to receptor.

The assessment endpoint receptors must be present at, or must potentially occur at, the site. Endpoint receptors must be exposed to COPECs, and they must be susceptible to the adverse effects of the COPECs when exposed at low doses relative to other potential endpoints.

**Habitat Description.** The habitats occurring at, or potentially occurring at, PGDP sites are important factors to consider in selecting assessment endpoints and developing the CSM for the site. The description of the habitats at PGDP sites should include general information about the site and specific information about terrestrial and aquatic habitats at the site. EPA provides a useful form (provided in Appendix E) for recording habitat characteristics during a site visit (EPA 1997a). The use of photographs, as well as maps and written site descriptions, is recommended. Photographs of sites should be taken when feasible and made available in association with ERAs and decision documents for PGDP sites.

**Conceptual Site Model.** A CSM is a written or pictorial representation of an environmental system and the biological, physical, and chemical processes that determine the transport of contaminants from sources through environmental media to environmental receptors within the system (ASTM 1995). The CSM for PGDP sites must define the potential pathways of exposure from source media to assessment endpoint receptors. The CSM should distinguish potential exposure pathways from those pathways that are evaluated in the ERA for the site. A diagram of the exposure pathways, including source media, fate and transport mechanisms, exposure media, exposure routes and receptors, is an expected element of all PGDP ERAs. Figure 2 is an example of a CSM exposure pathways diagram, and it is not representative of any site at PGDP. Food web diagrams are useful and should be included in the report if wildlife receptors are potentially exposed by ingestion at the site. Figure 3 is an example of a foodweb; however, it is not representative of any site at PGDP.

### 2.3.3 Step 3 Uncertainties

The uncertainties in Step 3 of the ERA process are primarily associated with the COPECs that remain following the reevaluation (Step 3a). As with Steps 1 and 2, there will not be site concentration data or alternative benchmarks for all constituents. The potential adverse effects of COPECs on some classes of receptors may be unknown. Data gaps must be clearly identified so that the site investigation can be designed to collect the data necessary to answer the risk questions.

### 2.3.4 Use of Step 3

The results of the refinement of COPECs and the problem formulation (Step 3) for the given site are used to support the decision at SMDP 2 whether to continue evaluating ecological risk. Generally, if any constituent in an abiotic medium to which organisms potentially are exposed is judged to be a COPEC in Step 3a, then further evaluation of the potential for risk to ecological receptors will be required. The results of Step 3a should be communicated in a technical memorandum, and the SMDP it triggers should occur before submittal of the work plan for the site investigation. Thus, Step 3a supports the decision about what assessment endpoints will be evaluated further in the ERA. Further evaluation means site-specific ecological investigation, which requires a work plan documenting Steps 3b and 4 of the process and describing how the data collected will be used in Step 7 to make a remedial decision for the site.

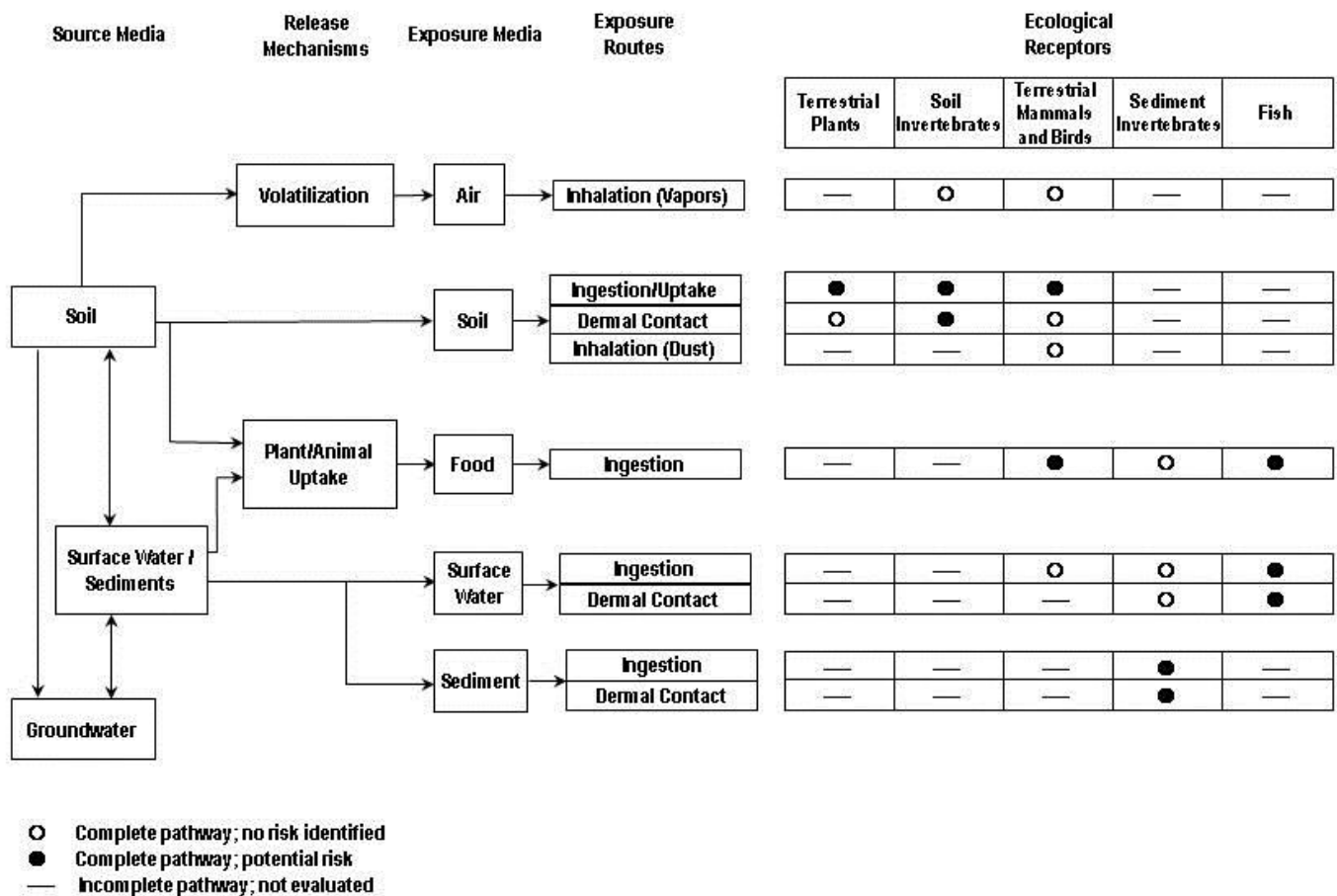
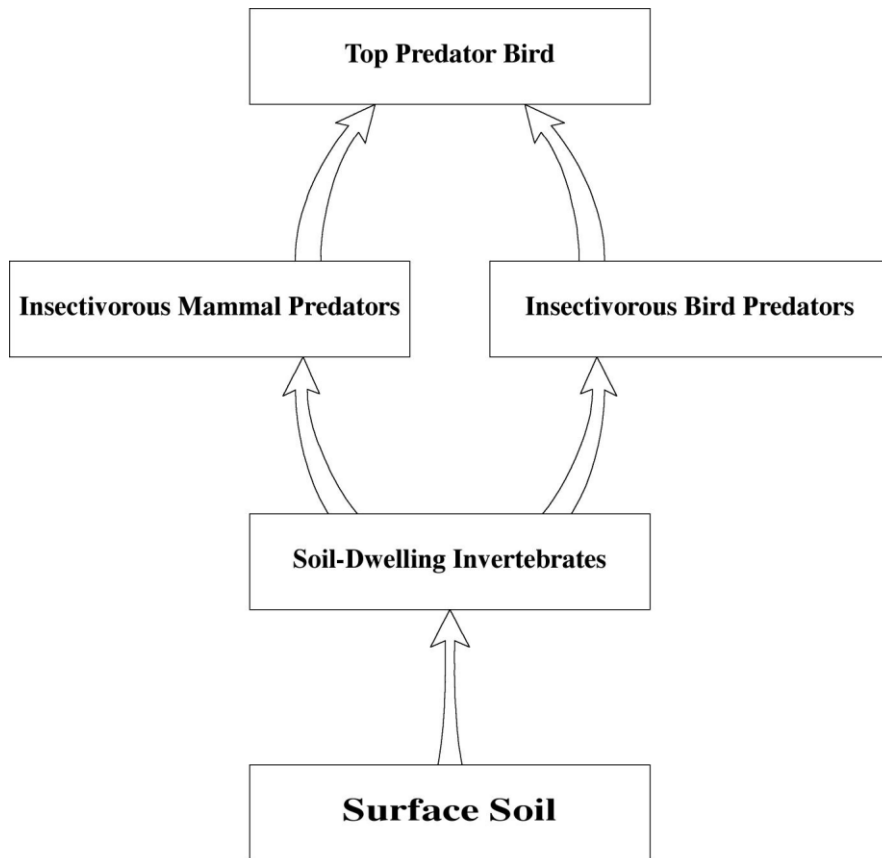


Figure 2. Example of a Conceptual Site Model of Exposure Pathways for Ecological Receptors



**Figure 3. Example of a Foodweb for Wildlife Receptors**

### **2.3.5 Reporting Step 3**

The documentation of Step 3 for PGDP sites should include the following:

- Site and, if available, reference site concentration data;
- Preliminary HQs, BAFs, and ingestion rates for wildlife receptors;
- Discussion of alternative benchmarks;
- Discussion of site-specific data and exposure assumptions;
- Ecotoxicity profiles for COPECs following reevaluation;
- Assessment endpoints and justification;
- Habitat descriptions;
- Conceptual site model;
- Risk questions and hypotheses; and
- Discussion of uncertainties.

The documentation of Step 3a results should include tables that compare side-by-side site and reference site concentrations, benchmark concentrations, preliminary HQs, and other data used to reevaluate COPECs. The discussion of uncertainties should include the lack of site concentration or toxicity data for COPECs. The results of Step 3a may be provided in the same document as screening Steps 1 and 2. The decision about whether to conduct a site investigation or to conduct no further evaluation or other action can be documented in the same report. If further evaluation is required, the additional elements of Step 3a and the problem formulation (Step 3b) can be incorporated into the work plan for the site investigation. Concurrence on assessment endpoints and risk questions should be obtained and documented before completion of Step 4, ERA Study Design and DQOs.

## **2.4 ERA STUDY DESIGN AND DATA QUALITY OBJECTIVES (STEP 4)**

Step 4 of the ERA process identifies the study design and DQOs for the site investigation. For PGDP sites, the ERA work plan and the sampling and analysis plan (SAP) are the primary products of Step 4. The work plan and SAP must specify the study design in sufficient detail for risk managers to evaluate its adequacy for collecting the data necessary to answer the risk questions with sufficient confidence to support remedial action decisions for the site. Final regulatory approval of the work plan and SAP represents the outcome of the Step 4 SMDP.

### **2.4.1 Study Design—Exposure and Effects Measurements**

A site-specific study is designed in Step 4 of the ERA process to answer the risk questions defined in Step 3. Site investigations for ERAs at PGDP sites are required to measure exposure, effects, or both. The measurements specified in the study design must be directly relevant to evaluating exposure of or effects on the assessment endpoints defined in Step 3. Most of the lines of evidence described below assume consideration of contaminant levels present at the site.

For ERAs at PGDP sites with wildlife receptors that are potentially exposed through ingestion of contaminated media, measurements should be made of the concentrations of COPECs in the tissues of organisms that those receptors potentially eat (PGDP ERA Rule 4) whenever feasible. Contaminant body burdens in prey are expected to be the primary and most typical exposure measurements used in ERAs at PGDP sites. Particular attention should be given to detection limits when establishing the DQOs for tissue analysis. Abiotic media sample collocated with tissue samples should be collected because they may be helpful in developing remedial goals, if required later in the remedial process. If tissue samples cannot be



collected, then the estimation of dose ingested through media will be done using the information in Appendix C.

Concentration measurements for endpoint-receptor tissues (e.g., organ, muscle, bone, feather, eggshell, or hair) may be used to confirm or monitor exposure to specific COPECs. If appropriate concentration-effects data are available for the COPEC and the endpoint receptor from the ongoing monitoring programs at PGDP, then exposure measurements should include concentrations in appropriate receptor tissues. Receptor-tissue sampling should be designed not to adversely impact the receptor populations. Particular attention should be given to detection limits when establishing DQOs for analysis of receptor tissues.

Organisms living in direct contact with contaminated media are assumed to be exposed to the COPECs present. For these receptors, the concentrations in the abiotic media to which they are exposed at the site must be measured. Toxicity tests reduce the uncertainty about bioavailability of COPECs, as quantified by analytical chemistry data for abiotic media. Special sampling and analytical techniques may be required to measure the exposure concentrations of COPECs in some media for some endpoint receptors. Particular attention should be given to sampling design and analytical detection limits when establishing DQOs for abiotic exposure media.

**PGDP ERA Rule 4**—For the study design for PGDP sites with wildlife receptors exposed to COPECs, include the collection and chemical analysis of prey tissue from the site.

There are numerous types of measurements of effects on various biological levels from the chromosome to the community. While measures of suborganismal effects on receptors exposed to COPECs at PGDP sites are possible, the most likely effects measurements for PGDP ERAs are measures of survival and reproduction of organisms: toxicity tests and measures of population/community abundance.

Analytical chemistry data provide estimates of current exposure concentrations and are essential to the interpretation of the toxicity tests and population/community studies. PGDP ERAs that include measures of effect must also include chemical analysis of collocated samples (PGDP ERA Rule 5). Collocated analyses are important to the interpretation of the toxicity test and population/community study results even though analytical data overestimate the bioavailability of some COPECs.

**PGDP ERA Rule 5**—For the study design for PGDP sites with receptors exposed by direct contact to COPECs, include collocated analytical chemistry data where *in situ*, laboratory toxicity tests, or population/community studies are specified.

**Toxicity Tests.** For ERAs at PGDP sites with endpoint receptors that are potentially exposed by direct contact with contaminated media, direct tests must be made of the toxicity of the exposure media (PGDP ERA Rule 6). Toxicity tests on abiotic media should use organisms that are representative of the endpoint receptors. Standardized toxicity tests using commercially supplied test species are available for soil, sediment, and surface water (see the following text box). The selection of standardized tests instead of *in situ* tests using local species should be justified and the differences between local and test species in their sensitivity to COPECs discussed. Samples from reference locations are required to identify impacts due to site-related COPECs present at the site, and these locations need to be carefully selected. Even carefully selected reference sites may be impacted by unknown stressors; therefore, the results for both the test site and the reference site must be compared to the laboratory control group run as part of the toxicity test. Some test methods include criteria for an acceptable response at an unimpacted site (for example, at least 80% survival). If the toxicity tests selected do not contain these criteria, the criteria need to be established by the project team during development of DQOs prior to running the toxicity tests.

## STANDARDIZED TOXICITY TESTS

Examples of standardized toxicity tests for surface soil, sediment, and surface water are, respectively, as follows:

- American Society for Testing and Materials (ASTM) E 1676-97, Standard guide for conducting laboratory soil toxicity or bioaccumulation tests with the Lumbricid earthworm, *Eisenia fetida* (ASTM 1998);
- EPA Test Method 100.1, *Hyalella azteca*, 10-day survival test for sediments (EPA 2000b); and
- Fathead minnow, *Pimephales promelas*, larval survival and growth test, EPA Method 1000.0 (EPA 2002).

**PGDP ERA Rule 6**—For the study design for PGDP sites with endpoint receptors exposed by direct contact to COPECs, include *in situ* or laboratory toxicity tests.

Laboratory tests indicate whether the media collected from the site cause toxicity to the test organisms and quantify the magnitude of the toxic effect relative to media from reference locations and laboratory controls. Samples from each site also should be submitted to laboratory analysis to quantify the concentrations of potential COPECs at both sites. Toxicity tests do not produce definitive benchmark concentrations associated with specific levels of adverse effects. Toxicity tests are considered to be chronic tests (EPA 2000b; EPA 2002; ASTM 1998), and test durations are believed to be sufficiently long for adverse effects on sensitive life stages to be observed at concentrations exceeding ecological screening values.

The measurement endpoints in toxicity tests used in PGDP ERAs typically will be survival, reproduction, growth, emergence, or combinations of these endpoints. Survival and reproduction are the primary effects of interest because they are directly related to the assessment endpoints, which are stated in terms of survival of the population and survival of individuals, in the case of T&E species. Reduced growth as a result of chronic exposure to contaminants can have ecological significance in some circumstances, such as when a population experiences severe size-based predation pressure or when overwinter survival depends on achieving a certain pre-winter size. Growth effects indicate only the possibility of adverse effects on a population, so toxicity tests with growth as the only measurement endpoint must be carefully justified. Likewise, emergence is an indirect measure of potential adverse effects on a population (e.g., aquatic insects). Because reduced emergence potentially leads to reduced survival and population size, reliance on emergence as the only measurement endpoint must be justified.

Using toxicity tests as a line of evidence in the risk characterization for PGDP sites assumes four points:

- Effects observed in laboratory tests of site media using surrogate species, beyond those observed in tests of reference site media, will represent effects on assessment endpoints occurring at the site.
- Effects observed for the reference site will not exceed the criteria for comparison to the laboratory control group, or the reference site also will be considered as potentially impacted and comparisons between the investigation site and reference site will not be used to demonstrate “no impact” at the investigation site.

- The substances responsible for any observed toxicity above reference site levels are those COPECs present at concentrations above reference site levels and above benchmarks associated with adverse effects.
- Effects on the test species are caused by contaminants in the tested medium and not artifacts of the test conditions or test organisms.

If these assumptions make toxicity tests unacceptable to risk managers as a basis for remedial decisions, then toxicity tests should not be selected, and population/community studies must be designed to answer the risk questions.

**Population/Community Measures.** If ERAs at PGDP sites require population/community studies to evaluate effects of COPECs on receptors, then the work plan must provide a detailed description and justification of the study. The EPA DQO process should be implemented (EPA 2006; DOE 1993). Preliminary data on population variability, both temporally and spatially, is a prerequisite to establishing DQOs for population studies. Standardized methods of evaluating whether benthic invertebrate communities and fish have been impacted are available (EPA 1990; KDEP 2011); however, to define the cause of the impacts, careful selection of metrics and reference sites is required to ensure that the results of population/community studies will answer the risk questions.

#### 2.4.2 DQO Process

According to the EPA process document, Steps 3 and 4 of the eight-step ERA process comprise the DQO process (EPA 1997a). The final COPECs, the nature of their effects on biota, the exposure pathways, the assessment endpoints, questions to be answered, and the measurements to be used to answer the ERA questions define the data requirements for the site investigation. The study design, approved at the Step 4 SMDP, defines the acceptable level of decision error. Guidance for sampling design is available from EPA, Kentucky state agencies, and the U.S. Geological Survey. The basic elements of the DQO process are described in EPA's *Guidance on Systematic Planning Using the Data Quality Objectives Process* (EPA 2006).

#### 2.4.3 Uncertainties of Step 4

The uncertainties in Step 4 of the ERA process relate to the efficacy of the study as designed to answer the risk questions. Tests can confirm or deny toxicity from site media in excess of the reference site or laboratory control group, but uncertainty remains about the ecological significance of observed levels of effect. Natural variability makes short-term field studies of effects difficult to interpret. Most native species are difficult to rear successfully in the laboratory, and laboratory test species may not be as sensitive to contaminants as are native species. Site-specific tissue concentration data reduce the uncertainty associated with modeling uptake and bioaccumulation. Accurate site-specific exposure parameters, such as ingestion rates and foraging areas, are also difficult to obtain, so there is uncertainty about risk estimates even when exposure estimates are based on site-specific tissue concentration data. Multiple lines of evidence are useful and recommended for reducing the uncertainty of ERAs at PGDP sites. The weighting for lines of evidence, as well as the criteria for comparison of toxicity tests to toxicity control groups, should be set during the scoping process.

#### 2.4.4 Use of Step 4

The work plan, including the SAP and quality assurance/quality control plan, for PGDP sites must prescribe the site investigation required to complete the ERA and answer the risk questions. The numbers and types of measurements specified in the work plan are made according to the procedures detailed in

the SAP. The work plan should describe precisely how the resulting data will be used in the risk characterization for the site and will constitute the basis for a conclusion about risk at the site. Approval of the work plan at the Step 4 SMDP signifies that the proposed field investigation design and methods provide acceptable data and levels of decision error to support the risk management decisions for the site.

#### **2.4.5 Reporting Step 4**

The ERA work plan and its appendices are the expected mechanism for recording and seeking approval of the DQOs and study design for the site investigation. The methods for collecting and controlling samples for toxicity tests and analytical chemistry are described in the RI work plan and field sampling plan for the site. The work plan or SAP should include the following:

- The number and location of samples of each medium for each purpose,
- The comparison of analytical detection limits and threshold concentrations,
- The full description of toxicity tests and population/community study designs, and
- A description of how the results of site investigations will be used in the risk characterization (Step 7) to answer risk questions.

Neither the ERAWG nor EPA has specific requirements about the timing of the document other than it must follow Steps 1 through 3 and precede the ecological site investigation (EPA 1997a).

### **2.5 VERIFICATION OF FIELD SAMPLING DESIGN (STEP 5)**

Verification of Field Sampling Design, Step 5 of the ERA process, evaluates the probability of successfully completing the study as designed. In this step, measurement endpoints are evaluated for appropriateness and implementability. The work plan or SAP for the ERA should describe the methods for verifying the study design. A memorandum from the ecological risk assessor to the risk manager should describe the outcome of the verification. If the design is verified, then the risk manager must approve the site investigation. If the design cannot be verified, the memorandum should describe the revised study design and how it was verified. The verification process and any remaining uncertainties about the study design should be discussed when the results of the site investigation are reported.

### **2.6 SITE INVESTIGATION AND DATA ANALYSIS (STEP 6)**

Site Investigation and Data Analysis, Step 6 of the ERA process, is the implementation of the site investigation designed in Step 4 and verified in Step 5. An SMDP during or following the site investigation and data analysis is only required if changes to the SAP are required following approval of the work plan. Approved alterations in the work plan for PGDP sites are documented in the report containing the risk characterization (i.e., the baseline ERA report).

### **2.7 RISK CHARACTERIZATION (STEP 7)**

Risk Characterization, Step 7 of the ERA process, is conducted after data collected during the site investigation have been analyzed. The risk characterization evaluates the exposure and effects data to assess the risk to the assessment endpoints (risk estimation). The risk characterization also presents

information necessary to interpret the risk assessment and to decide upon adverse effect thresholds for the assessment endpoints (risk description). This presentation should include a qualitative and quantitative summary of risk results and uncertainties.

### **2.7.1 Risk Estimation**

The lines of evidence, for which data were collected in the site investigation, are integrated in the risk characterization to support a conclusion about the significance of ecological risk. The different possible lines of evidence are abiotic medium and tissue concentration data, toxicity test results, and population/community data.

The weight given to the different lines of evidence is determined during the scoping process for each site and established in the DQOs (Step 4); thus, the inferences made from the measurements are briefly described in Step 7. Factors confounding the results of the site investigation should be discussed. Any alterations to the study design during Field Verification (Step 5) and Site Investigation (Step 6) should be described.

If site-specific tissue concentration data are available from the site investigation, HQs for wildlife receptors preying on those tissues are calculated. These HQs are calculated using the HQ equations (Appendix C) with appropriate exposure estimates and TRVs. In Step 7, the full range of risk estimates can be provided by calculating HQs using the central tendency and maximum tissue concentrations to estimate exposure and TRVs associated with a range of adverse effect from NOAELs to LOAELs.

ERAs for PGDP sites will not present only probabilistic estimates of exposure; point estimates are required. The ERAWG concurs that probabilistic methods of quantifying risk are expected to be of limited value for ERAs at PGDP sites because adequate data are typically lacking. If sufficient data exist to calculate probabilistic risk estimates, they can be reported and used in PGDP ERAs to address the uncertainty of point estimates of risk. ERAs presenting probabilistic risk estimates must have an approved work plan and include the documentation specified in EPA guidance on probabilistic risk assessments (EPA 1997b).

### **2.7.2 Risk Description**

For PGDP ERAs, the risk characterization should put the level of risk at the site in context. The risk description should identify threshold concentrations in source or exposure media for effects on the assessment endpoint. EPA indicates that the range of potential effects be bounded by threshold concentrations associated with no effect and probable effect (EPA 1997a). As discussed in Steps 1 and 2, PGDP NFA levels bound the range at the lower end for receptors exposed by direct contact. Lower bound threshold concentrations for wildlife receptors are calculated using the conservative assumptions used to calculate preliminary HQs in Step 3a. All site-specific parameter values used to calculate HQs must be described and the source of the values identified. The HQ equations (Appendix C) can be used to calculate threshold concentrations by setting the HQ equal to 1 [average daily dose (ADD) = TRV] and solving for the medium concentration. This formula applies only to sites at which a single media is contaminated. A site-specific model needs to be developed for each site with more complex multimedia exposures.

Residual risk, which is the difference between the risk estimate for the site and a risk estimate generated using the same method but with background concentrations as the exposure concentrations, also can be presented in the Step 7 risk description. This information may be useful for risk managers in estimating potential risk reduction, particularly for sites with contaminant concentrations elevated minimally above background.

ERAs for PGDP sites should include estimates for the upper bound on the threshold concentrations for adverse ecological effects, i.e., those concentrations in environmental media that are associated with a probable effect (EPA 1997a). These upper-bound threshold concentrations are calculated using the site-specific exposure assumptions identified in Step 3a, Reevaluation of COPECs, and toxicity benchmarks associated with potential adverse effects on test species (e.g., LOAELs). Upper-bound thresholds must be calculated on a site-specific basis and presented in the ERA report.

### **2.7.3 Step 7 Uncertainties**

At Step 7 of the ERA process for PGDP sites, the uncertainty about the risk posed by a substance should have been reduced to a level that allows risk managers to make a technically defensible remedial decision. Uncertainty will, however, remain at the risk characterization step. The actual cause of observed toxicity and reductions in populations may be unknown, and the actual expected level of exposure of wildlife receptors to contaminated site media may be inaccurate or imprecise. Nevertheless, if the DQOs for the site investigation were achieved, risk managers should have sufficient confidence in the conclusions of the ERA to make a risk management decision.

### **2.7.4 Use of Step 7**

The risk characterization provides information to judge the ecological significance of the estimated risk to assessment endpoints in the absence of any remedial action. In the final step of the EPA eight-step ERA process, risk managers use the results of the risk characterization and the conclusions of the professional ecological risk assessor to determine whether remedial action is required.

### **2.7.5 Reporting Step 7**

Step 7 of the ERA process for PGDP sites is reported in the ERA, which may be included in the RI/FS, or as a separate document. Neither the ERAWG nor EPA has specific requirements about the timing of the document, other than it must follow Steps 1 through 6 (EPA 1997a).

## **2.8 RISK MANAGEMENT (STEP 8)**

Step 8 of the ERA process is Risk Management. The role of ecological risk assessors in Step 8 for PGDP sites is to advise risk managers during the final SMDP. EPA provides additional guidance on risk management (EPA 1999b). If the risk characterization (Step 7) concludes there is risk to ecological receptors, the risk management decision is whether to remediate the site or to leave contaminants of concern (COCs) in place with controls on exposure and monitoring. This decision can be documented in the ERA report. If the risk assessment concludes there is no risk to ecological receptors, then the results of the ERA can be summarized in the decision documents, justifying no further evaluation or other actions to address ecological risk. If the ecological assessment concludes that there is unacceptable risk, then the ecological risk assessors continue to provide input as part of the decision making process. If the risk managers conclude there is unacceptable risk, then ecological risk assessors continue to provide input to risk management decisions following the completion of the RI.

## **2.9 SUMMARY OF ERA PROCESS**

The ERA process for PGDP sites includes up to eight steps and five SMDPs. Several documents report the results of these steps and the decisions made by risk managers at the SMDPs. Decisions whether to continue the ERA process occur after the screening-level ERA (Steps 1 and 2) and again after Step 3,

Problem Formulation. The ecological risk assessment input (Step 8) to the risk management decision to remediate the site should occur after the risk characterization (Step 7). Ecological risk assessors for PGDP sites continue to support the risk management decision making process by providing input to decision documents.

### **3. INPUT TO DECISION DOCUMENTS**

Ecological risk assessors should provide input to CERCLA and RCRA decision documents for sites with ecological resources. This input includes summaries of ERAs and screenings; evaluations of the adverse effects on habitats, ecological receptors, and the effectiveness of proposed exposure controls; and the requirements of monitoring plans. Decision documents and documents supporting the selection of response actions include FSs, proposed plans, records of decision (RODs), their corresponding RCRA documents, and other remedy selection decision documents, such as those documenting NFA decisions, engineering evaluation/cost assessments, and site management plans (EPA 1999c). Ecological risk analyses for, and inputs to, FSs, NFA decision documents, proposed plans, RODs, and 5-year review documents are discussed in the following subsections.

#### **3.1 FEASIBILITY STUDY**

The FS for a PGDP site requires input from ecological risk assessors. Typically, the FS for a PGDP site will include a summary of the findings of the ERA for the site, TCLs for COCs identified in the ERA for the site, and qualitative evaluation of impacts on ecological resources and effectiveness of alternative response actions.

Site-specific TCLs should be derived in the FS for each site considered for remedial action. TCLs for PGDP sites should be reported in the FS for the site, as well as later decision documents. Ecological TCLs for sites having an ERA are typically the highest concentration of a substance in an environmental medium that is protective of assessment endpoints. The assumptions and data used to derive cleanup levels must be justified in the FS. If an FS is produced for sites that have been selected for remedial action before an ERA, then the ecological TCLs for the site should be reported as part of the development of remedial goal options in the FS, and the assumptions and data used to derive them should be discussed.

Until PGDP develops a substantial body of relevant published and site-specific data on natural attenuation, degradation should not be included in the calculation of cleanup goals. Radioactive decay, on the other hand, should be considered when developing cleanup goals for radionuclides at PGDP sites.

The detailed evaluation of alternative response actions in the FS for PGDP sites with ecological COCs should include a qualitative evaluation of impacts on ecological resources. Impacts on the ERA assessment endpoints must be evaluated so that risk managers will be able to compare, on an equivalent basis, the risks of cleanup alternatives and the NFA alternative. Ecological resources that are not assessment endpoints but which are potentially impacted by response actions also must be evaluated. Evaluating all identifiable impacts to all ecological resources for each alternative will allow those alternatives to be compared.

#### **3.2 NO FURTHER ACTION DECISION DOCUMENTS**

NFA decision documents will generally require a summary of site risks. Two of the three CERCLA NFA decision documents identified by EPA guidance on RODs require risk summaries: those where remedial action is not necessary for protection because there is no risk and those where no action is necessary because previous response actions at the site have reduced or eliminated risk (EPA 1999c). According to EPA, NFA decision documents for sites where there is “No CERCLA authority to take action” do not include a summary of site risks (EPA 1999c).



The summary of site risks in NFA decision documents must include a summary of risks to ecological receptors. The summary should provide sufficient information to support the determination that no remedial action is needed to ensure protection of ecological receptors. The summary should explain the basis for concluding that ecological receptors will not experience unacceptable exposures to, and effects from, hazardous substances. The summary should correlate with current and potential future site conditions and uses of resources at the site.

### **3.3 PROPOSED PLAN**

Proposed plans for PGDP sites and the equivalent for early actions should include a summary of the ecological risk findings (EPA 1999c). The proposed plan facilitates public involvement in the remedy selection process. Among other things, the document explains the reasons why the lead agency recommends the preferred alternative for addressing contamination at the site. A major section of the plan is the Summary of Site Risks, including risks to the environment (i.e., ecological risk).

The Summary of Site Risks section of the proposed plan for PGDP sites should provide a brief, descriptive narrative summary regarding the nature and extent of risk to ecological receptors. The proposed plan is targeted to the general public. Therefore, the proposed plan should not include extensive tables of risk calculations, which are more appropriate to the ROD. If ecological risks are a basis for the selected remedy at a PGDP site, then the proposed plan should include streamlined risk summary tables like those suggested by EPA (1999c) (Appendix D).

The summary of the ERA in the proposed plan for PGDP sites should include the following:

- Ecological COCs in each medium,
- Current and reasonably anticipated future habitats and land use,
- Assessment endpoints,
- Exposure pathways for ecological receptors, and
- Summary of risk characterization.

The summary of the risk characterization should address the basis for the conclusions concerning ecological risk for receptors exposed to each medium and the potential for risk to T&E species.

For sites that have been selected for remedial action before an ERA is conducted, site-specific TCLs should be reported in the proposed plan or ROD for the site. TCLs must be conservative estimates of concentrations in environmental media that will protect all or most ecological receptors potentially exposed at the site. Site-specific TCLs may be larger than the corresponding PGDP NFA values. PGDP NFA values are not site-specific and, therefore, must be sufficiently conservative to protect all potential receptors at PGDP sites. Site-specific TCL values may be based on a more limited set of receptors, and more sensitive receptors protected by NFA values may not occur at the site.

### **3.4 RECORD OF DECISION**

The Summary of Site Risks section of RODs for PGDP sites should include a summary of risks to ecological receptors (EPA 1999c). The ROD should summarize the ERA at an appropriate level of detail for the complexity of the site and the risks identified. Each of the eight steps of the ERA process for PGDP sites should be summarized.

The summary of the ERA in RODs for PGDP sites will contain tables of risk assessment parameters and results. The summary of the screening-level risk assessment (Steps 1 and 2) should include tables of screening-level benchmarks (PGDP NFA levels) and COPECs identified in the screen. Tables of site concentrations (range, mean, and 95% UCLs) should be included in support of the summary of Steps 1 through 3. Tables clearly summarizing preliminary HQs, TRVs, alternative benchmarks, relevant site-specific exposure parameters and effects data, and the conclusions of the reevaluation of COPECs (Step 3a) should be included in the ROD. The summary of the problem formulation should include, as tables or text, brief descriptions of site habitats, the CSM, exposure pathways, assessment endpoints, and the basis for their selection. The types, number, and DQOs of samples and analyses for the site investigations conducted to answer ecological risk questions should be summarized. Tables of results of site-specific studies on effects (e.g., toxicity tests) and risk calculations based on site-specific tissue concentration data will support the summary of the risk characterization.

When calculating residual risks for a group of units, there is no need to include calculations for units previously agreed to be NFA based upon an approved risk assessment (or alternative calculation, such as a screening assessment); however, the documentation should include by reference the NFA site's risk results.

The site-specific TCLs for ecological receptors at a PGDP site should be reported in the ROD as well as in the FS and proposed plan for the site. For sites that have been selected for remedial action before an ERA, these TCLs will be conservative estimates of concentrations of substances present in environmental media that will protect ecological receptors potentially exposed at the site. As discussed above for proposed plans, TCLs are often equal to PGDP screening NFA values, but also may be higher than NFA values.

Input from ecological risk assessors to monitoring plans will be required if RODs for PGDP sites with ecological risk specify monitoring as part of the selected response action. The monitoring required to address ecological risk must address the assessment endpoints and risk questions selected in Step 3 of the ERA process. The work plan for monitoring programs should repeat PGDP ERA Step 4, Study Design and DQO Process, to ensure that the measurements will answer the risk questions being addressed by the monitoring with sufficient confidence to support risk management decisions during 5-year reviews.

### **3.5 FIVE-YEAR REVIEW**

According to EPA and DOE guidance, 5-year reviews at PGDP sites should identify, collect, and compile the necessary information and data to determine whether remedies continue to be fully protective of human health and the environment (EPA 1999c; DOE 2014). For PGDP sites remediated under CERCLA authorities and monitored under the DOE's Long-Term Stewardship Program, information and data collected to assess remedy performance will be based primarily on monitoring requirements established during the implementation and closeout phases of the CERCLA process. In general, these data will be collected under the auspices of the stewardship program and the five-year review requirement incorporated into this program as a reporting tool.

According to DOE, five-year reviews at PGDP sites will include the following actions:

- Evaluate whether the remedy is operational and functional;
- Evaluate those assumptions critical to the effectiveness of remedial measures or the protection of human health and the environment (made at the time of the remedial decision) to determine, given current information, whether these assumptions are still valid;

- Determine whether “fixes” are required to address any identified deficiencies; and
- Evaluate whether there are opportunities to optimize the long-term performance of the remedy or reduce life-cycle costs.

Each of these four review activities must consider ecological risk at the site. An evaluation of those parameters established as appropriate indicators of performance at the site serves as the basis for the determination of whether remedies are operational and functional. Performance indicators, therefore, must include measures relevant to the exposure of ecological receptors identified in the ERA as being at risk from COCs in one or more medium at the site.

## 4. REFERENCES

- ASTM (American Society for Testing and Materials) 1995. *Standard Guide for Developing Conceptual Site Models for Contaminated Sites*, E 1689-95, Philadelphia, PA.
- ASTM 1998. *Annual Book of ASTM Standards, Volume 11.05, Biological Effects and Environmental Fate; Biotechnology; Pesticides*, ASTM, West Conshohocken, PA.
- DOE 2014. *Methods for Conducting Risk Assessments and Risk Evaluations at the Paducah Gaseous Diffusion Plant, Paducah, Kentucky, Volume 1. Human Health*, DOE/LX/07-0104&D2/R4/V1, Kevil, KY, September.
- EPA (U.S. Environmental Protection Agency) 1990. *Macroinvertebrate Field and Laboratory Methods for Evaluating the Biological Integrity of Surface Waters*, EPA/600/4-90/030, Office of Water, Washington, DC.
- EPA 1997a. *Ecological Risk Assessment Guidance for Superfund: Process for Designing and Conducting Ecological Risk Assessments*, Environmental Response Team, Edison, NJ, Interim Final.
- EPA 1997b. *Guiding Principles for Monte Carlo Analysis*, EPA/630/R-97/001, U.S. Environmental Protection Agency, Washington, DC.
- EPA 1999a. *Screening Level Ecological Risk Assessment Protocol*, EPA530-D-99-001A, Multimedia Planning and Permitting Division, Center for Combustion Science and Engineering, U.S. Environmental Protection Agency Region 6 and Office of Solid Waste, Washington, DC, Draft, August.
- EPA 1999b. Memorandum, "Issuance of Final Guidance: Ecological Risk Assessment and Risk Management Principles for Superfund Sites," OSWER Directive 9285.7-28P, OSWER, Washington, DC.
- EPA 1999c. *A Guide to Preparing Superfund Proposed Plans, Records of Decision, and Other Remedy Selection Documents*, EPA-540-R-98-031, Washington, DC, July.
- EPA 2000a. *Amended Guidance on Ecological Risk Assessment at Military Bases: Process Considerations, Timing of Activities, and Inclusion of Stakeholders*, 4WD-OTS, Memorandum from Ted Simon, Office of Technical Services, Atlanta, GA, June.
- EPA 2000b. *Methods for Measuring the Toxicity and Bioaccumulation of Sediment-Associated Contaminants with Freshwater Invertebrates*, Second Edition, EPA-600/R-99/064, Office of Research and Development, Duluth, MN, March.
- EPA 2002. *Short-Term Methods for Estimating the Chronic Toxicity of Effluents and Receiving Water to Freshwater Organisms*, Fourth Edition, EPA-821-R-02-013, Office of Water, Washington, DC, October.
- EPA 2006. *Guidance on Systematic Planning Using the Data Quality Objectives Process*, EPA QA/G-4, Office of Environmental Information, EPA/240/B-06/0001, February.

- EPA 2009. *Statistical Analysis of Groundwater Monitoring Data at RCRA Facilities Unified Guidance*. U.S. Environmental Protection Agency Office of Resource Conservation and Recovery, EPA 530/R-09-007.
- EPA 2013. *ProUCL Version 5 Technical Guide*. EPA/600/R-07/041, Office of Research and Development, Washington, DC, September, Model available at [www.epa.gov/osp/hstl/tsc/software.htm](http://www.epa.gov/osp/hstl/tsc/software.htm).
- Jarvinen, Alfred W., and G. Ankley 1999. *Linkage of Effects to Tissue Residues: Development of a Comprehensive Database for Aquatic Organisms Exposed to Inorganic and Organic Chemicals*, SETAC Special Publication, Lewis Publishers, Boca Raton, FL.
- KDEP (Kentucky Department for Environmental Protection) 2011. *Methods for Sampling Benthic Macroinvertebrate Communities in Wadeable Waters*, DOWSOP03003, Revision 3, Division of Water, Frankfort, KY, January.
- LANL (Los Alamos National Laboratory) 2012. "Ecorisk Database (Release 3.1)," LA-UR-12-24548, Los Alamos National Laboratory, Los Alamos, New Mexico, NM, October.
- Sample, B. E. et al. 1997. *Methods and Tools for Estimation of the Exposure of Terrestrial Wildlife to Contaminants*, ORNL/TM-13391, Environmental Sciences Division, Oak Ridge National Laboratory, Oak Ridge, TN.

**APPENDIX A**

**PGDP NO FURTHER ACTION LEVELS**

**THIS PAGE INTENTIONALLY LEFT BLANK**

## TABLES

A.1. List of Substances that Bioaccumulate.....	A-11
A.2. PGDP Soil NFA Screening Values .....	A-12
A.3. PGDP Soil NFA Screening Values for Radionuclides.....	A-14
A.4. PGDP Sediment NFA Screening Values .....	A-15
A.5. PGDP Sediment NFA Screening Values for Radionuclides .....	A-16
A.6. PGDP Surface Water NFA Screening Values.....	A-17
A.7. PGDP NFA Surface Water Values for Radionuclides .....	A-20
A.8. NOAEL-based TRVs for PGDP Wildlife Receptors .....	A-21
A.9. LOAEL-based TRVs for PGDP Wildlife Receptors.....	A-22
A.10. Tissue Residue Benchmarks for Birds .....	A-23
A.11. Tissue Residue Benchmarks for Mammals .....	A-23



**THIS PAGE INTENTIONALLY LEFT BLANK**

## ACRONYMS

COPEC	chemical of potential ecological concern
DOE	U.S. Department of Energy
Eco-SSLs	Ecological Soil Screening Level
ERA	ecological risk assessment
ERAWG	Ecological Risk Assessment Working Group
ESL	ecological screening level
GLWQI	Great Lakes Water Quality Initiative
KDEP	Kentucky Department for Environmental Protection
LANL	Los Alamos National Laboratory
LOAEL	lowest observed adverse effect level
NCRP	National Council on Radiation Protection
NFA	no further action
NRWQC	National Recommended Water Quality Criteria
NOAEL	no observed adverse effect level
ORNL	Oak Ridge National Laboratory
PAH	polycyclic aromatic hydrocarbon
PCBs	polychlorinated biphenyls
PGDP	Paducah Gaseous Diffusion Plant
RAIS	Risk Assessment Information System
TRV	toxicity reference value
WWAH	Warm Water Aquatic Habitat

**THIS PAGE INTENTIONALLY LEFT BLANK**

## PGDP NO FURTHER ACTION LEVELS

No Further Action (NFA) levels for chemicals are concentrations in abiotic media used to screen constituents detected at a site to identify those constituents that require further evaluation [i.e., chemicals of potential ecological concern (COPECs)]. NFA levels are generally conservative estimates of chemical concentrations that will not adversely affect ecological receptors with high probability. NFA levels are not necessarily acceptable cleanup goals because of their potentially extreme conservatism.

The NFA level for radionuclides is a threshold “no effect” dose. The threshold dose is for the combined exposure to all radionuclides present at a site. NFA levels cannot be derived for individual radionuclides unless a relative abundance of radionuclides is specified and the relative abundance of radionuclides is a site-specific property. For any specified distribution of radionuclides at a site, NFA levels resulting in the threshold dose can be derived using U.S. Department of Energy (DOE) Standard 1153-2002 (DOE 2002) and the associated RESRAD-BIOTA software (available at <http://web.ead.anl.gov/resrad/home2/biota.cfm>).

NFA levels for soil, sediment, and surface water are provided for a limited number of chemical constituents. The available NFA levels come from various sources, which were identified and unanimously agreed upon by the members of the Ecological Risk Assessment Working Group (ERAWG). Representatives of Kentucky Department for Environmental Protection (KDEP), U.S. Environmental Protection Agency (EPA), and DOE developed the hierarchy of sources and the selected values. The agreed-upon NFA levels are briefly described here.

The ERAWG agreed that for Paducah Gaseous Diffusion Plant (PGDP) ecological risk assessment (ERA) substances that potentially bioaccumulate will be considered in Step 3 of the ERA, whether or not they exceed NFA levels. As part of Step 3a, these substances that bioaccumulate will be evaluated through food-chain modeling. The list of substances that bioaccumulate is based on the list developed for the Great Lakes Water Quality Initiative (GLWQI). The list of substances that bioaccumulate for PGDP appears in Table A.1. NFA levels are based on the risk to organisms that are exposed to single constituents by direct contact with the medium. NFA levels do not protect receptors potentially exposed by ingestion to substances that have accumulated in the tissue of their food items. The presence of substances that bioaccumulate is not necessarily sufficient to trigger Step 3 of the ERA process for PGDP sites, but these substances should be considered if the ERA proceeds to Step 3.

**Soil NFA levels**—The soil NFA levels for chemicals (Table A.2) are selected based on the following hierarchy:

- (1) EPA Ecological Soil Screening Level (Eco-SSLs);
- (2) EPA Region 4 screening values for soil;
- (3) Values selected from among KDEP screening values, Los Alamos National Laboratory (LANL) soil screening values [minimum ecological screening level (ESL)], and Oak Ridge National Laboratory (ORNL) soil screening values based on professional judgment.

The NFA value for any particular chemical may be chosen from a lower tier if the value from the higher tier is not appropriate for use at PGDP. Chemicals for which a lower tier value was selected over a value available from a higher tier are footnoted with the rationale for the selection. The source for each value is noted in the screening table next to the value.

The soil NFA levels for radionuclides (Table A.3) are calculated from the NFA dose. The ERAWG consensus NFA dose for receptors exposed to radionuclides in PGDP soil is 0.1 rad/day, which is the recommended National Council on Radiation Protection (NCRP) threshold dose for soil invertebrates (1 rad/day) times a safety factor of 0.1 (NCRP 1991). In lieu of site-specific radionuclide relative abundance data, the PGDP NFA levels for soil are radionuclide soil-screening benchmarks for terrestrial plants and animals using RESRAD-BIOTA, Version 1.5, for soil for the terrestrial animal and plant receptors with the default dose adjusted to the ERAWG consensus value of 0.1 rad/day. The calculated PGDP soil NFA levels for radionuclides are used in the same way as soil NFA levels for chemicals.

**Sediment NFA levels**—The sediment NFA levels (Table A.4) for chemicals come from the following hierarchy of sources:

- (1) EPA Region 4 values (or Region 5 if Region 4 values are not available) and
- (2) Values selected from among KDEP screening values and ORNL sediment screening values based on professional judgment

The ERAWG consensus NFA dose for receptors exposed to radionuclides in the aquatic environment is 0.1 rad/day. The sediment NFA levels for radionuclides are calculated from the NFA dose (Table A.5). The ERAWG consensus NFA dose for receptors exposed to radionuclides in PGDP sediment is 0.1 rad/day, which is the recommended NCRP threshold dose for aquatic receptors (1 rad/day) times a safety factor of 0.1 (NCRP 1991). In lieu of site-specific radionuclide relative abundance data, the PGDP NFA levels for sediment are generated using RESRAD-BIOTA, Version 1.5, for sediment for the aquatic and riparian animal receptors with the default dose adjusted to the ERAWG consensus value of 0.1 rad/day. The calculated PGDP sediment NFA levels for radionuclides are used in the same way as sediment NFA levels for chemicals.

**Surface water NFA levels**—The surface water NFA levels (Table A.6) come from the following hierarchy of sources:

- (1) The Kentucky Warm Water Aquatic Habitat (WWAH) criterion
- (2) The National Recommended Water Quality Criteria (NRWQC) chronic criterion continuous concentration
- (3) EPA Region 4 freshwater values
- (4) Values selected from among KDEP screening values and ORNL surface water screening values based on professional judgment

The surface water NFA levels for radionuclides are calculated from the NFA dose (Table A.7). The ERAWG consensus NFA dose for receptors exposed to radionuclides in PGDP surface water is 0.1 rad/day, which is the recommended NCRP threshold dose for aquatic receptors (1 rad/day) times a safety factor of 0.1 (NCRP 1991). In lieu of site-specific radionuclide relative abundance data, the PGDP NFA levels for surface water are generated using RESRAD-BIOTA, Version 1.5, for surface water for the aquatic animal receptor with the default dose adjusted to the ERAWG consensus value of 0.1 rad/day to correspond to PGDP surface water NFA radiological doses of 0.1 rad/day. The radionuclide screening benchmarks are derived for parent isotopes and all short-lived daughter products using the radionuclide exposure model of Blaylock et al. (1993), thus, including internal and external exposures from all major alpha, beta, and gamma emissions for each isotope. Screening benchmarks for small fish are used because vertebrates are thought to be more sensitive than invertebrates (NCRP 1991). The calculated PGDP

surface water NFA levels for radionuclides are used in the same way as surface water NFA levels for chemicals.

Table A.8 presents toxicity reference values (TRVs) for wildlife receptors based on no observed adverse effect levels (NOAELs). These benchmarks are expressed as a daily dose. ERAs for PGDP sites will need to explain how all benchmarks are derived and selected. The benchmarks in Table A.8 are taken from similar sources to those discussed for Tables A.2 through A.7. Similarly, Table A.9 presents TRVs for wildlife receptors based on lowest observed adverse effect level (LOAELs).

## REFERENCES

- Birge, W. J. and D. J. Price 2002. *Analysis of Polychlorinated Biphenyl Mixtures (PCB) and Metals in Water Samples Collected from the Bayou Creek System on August 13-14, 2001. Final Report.* Division of Waste Management, Kentucky Department for Environmental Protection.
- BJC (Bechtel Jacobs Company LLC) 1998. *Radiological Benchmarks for Screening Contaminants of Potential Concern for Effects on Aquatic Biota at Oak Ridge National Laboratory, Oak Ridge, Tennessee*, BJC/OR-80, Environmental Management and Enrichment Facilities, Oak Ridge, TN.
- Blaylock, B. G., M. L. Frank, and B. R. O'Neal 1993. *Methodology for Estimating Radiation Dose Rates to Freshwater Biota Exposed to Radionuclides in the Environment*, ES/ER/TM-78, Oak Ridge National Laboratory, Oak Ridge, TN.
- Buchman, M. F. 1998. *NOAA Screening Quick Reference Tables*, NOAA HAZMAT Report 97-2, Hazardous Materials Response and Assessment Division, National Oceanic and Atmospheric Administration, Seattle, WA.
- DOE (U.S. Department of Energy) 2002. *DOE Standard 1153-2002: A Graded Approach for Evaluating Radiation Doses to Aquatic and Terrestrial Biota*, (basis for RESRAD-BIOTA) U.S. DOE Washington, DC, July.
- EPA (U.S. Environmental Protection Agency) 1995. *Great Lakes Water Quality Initiative Criteria Documents for the Protection of Wildlife: DDT; Mercury; 2,3,7,8-TCDD, PCBs*, EPA-820-B-95-008, Washington, DC.
- EPA 2001. Supplemental Guidance to RAGS: Region 4 Bulletins, Ecological Risk Assessment. Originally published November 1995. Website version last updated November 30, 2001: <http://www.epa.gov/region4/waste/ots/ecolbul.htm>.
- EPA 2005. *Guidance for Developing Ecological Soil Screening Levels*. OSWER Directive 9285.7-55, Office of Solid Waste and Emergency Response, Washington, DC, February.
- Ingersoll, C. G. and D. D. MacDonald 1999. *An Assessment of Sediment Injury in the West Branch of the Grand Calumet River: Volume 1*, U.S. Geological Survey, Columbia, MO.
- Jones, D.S., G.W. Suter II, and R.N. Hull. 1997. *Toxicological Benchmarks for Screening Contaminants of Potential Concern for Effects on Sediment-Associated Biota: 1997 Revision*, ES/ER/TM-95/R4, Oak Ridge National Laboratory, Oak Ridge TN, November.

- LANL (Los Alamos National Laboratory) 2012. "Ecorisk Database (Release 3.1)," on CD, LA-UR-12-24548, Los Alamos National Laboratory, Los Alamos, NM, October.
- MacDonald, D. D., C. G. Ingersoll, and T. A. Berger 2000. "Development and Evaluation of Consensus-Based Sediment Quality Guidelines for Freshwater Ecosystems," in *Archives of Environmental Contamination and Toxicology* (in press).
- NCRP (National Council on Radiation Protection) 1991. *Effects of Ionizing Radiation on Aquatic Organisms*, NCRP Report No. 109, Bethesda, MD.
- Sample, B. E., D. M. Opresko, and G. W. Suter II 1996. *Toxicological Benchmarks for Wildlife: 1996 Revision*, ES/ER/TM-86/R3.
- Sample, B. E. et al. 1997. *Methods and Tools for Estimation of the Exposure of Terrestrial Wildlife to Contaminants*, ORNL/TM-13391, Environmental Sciences Division, Oak Ridge National Laboratory, Oak Ridge, TN.
- Smith, S. L. et al. 1996. "A Preliminary Evaluation of Sediment Quality Assessment Values for Freshwater Ecosystems," *J. Great Lakes Res.* 22: 624–638.
- Suter, G. W. II and C. L. Tsao 1996. *Toxicological Benchmarks for Screening Potential Contaminants of Concern for Effects on Aquatic Biota: 1996 Revision*, ES/ER/TM-96/R2, Lockheed Martin Energy Systems, Inc., Oak Ridge, TN.

**Table A.1. List of Substances that Bioaccumulate<sup>a</sup>**

<b>Chemical Class</b>	<b>Chemical</b>
<i>Metals</i>	Mercury
	Selenium
<i>Dioxins/Furans</i>	2,3,7,8-TCDD
	2,3,7,8-TCDF
<i>Semivolatile Organics</i>	1,2,4,5-Tetrachlorobenzene
	Hexachlorobenzene
	Hexachlorobutadiene
	Hexachlorocyclohexane
	Pentachlorobenzene
<i>Pesticides/PCBs</i>	4,4'-DDD
	4,4'-DDE
	4,4'-DDT
	alpha-BHC
	beta-BHC
	delta-BHC
	gamma-BHC
	alpha-Chlordane
	Chlordane
	gamma-Chlordane
	Aroclor-1016
	Aroclor-1221
	Aroclor-1232
	Aroclor-1242
	Aroclor-1248
	Aroclor-1254
	Aroclor-1260
	Polychlorinated biphenyls (PCBs)
	Dieldrin
	Toxaphene

<sup>a</sup> Source July 8, 2008, e-mail from Brett Thomas, EPA Region 4 Ecological Risk Assessor.



**Table A.2. PGDP Soil NFA Screening Values**

<b>Analyte</b>	<b>PGDP NFA Screening Value (mg/kg)</b>	<b>Source for Screening Value</b>
<b><i>Inorganics</i></b>		
	If soil pH is less than 5.5, use 50; otherwise no evaluation needed	Eco-SSL; EPA Region 4
Aluminum		
Antimony	0.27	Eco-SSL
Arsenic	18	Eco-SSL
Barium	330	Eco-SSL
Beryllium <sup>a</sup>	2.5	LANL Ecorisk Database
Boron	0.5	EPA Region 4
Cadmium	0.36	Eco-SSL
Chromium (III and total)	26	Eco-SSL
Chromium (VI)	130	Eco-SSL
Cobalt	13	Eco-SSL
Copper	28	Eco-SSL
Iron	narrative statement	Eco-SSL
Lanthanum	50	EPA Region 4
Lead	11	Eco-SSL
Lithium	2	EPA Region 4
Manganese	220	Eco-SSL
Mercury	0.1	EPA Region 4
Molybdenum	2	EPA Region 4
Nickel	38	Eco-SSL
Selenium	0.52	Eco-SSL
Silver	4.2	Eco-SSL
Technetium	0.2	EPA Region 4
Thallium	1	EPA Region 4
Tin	50	EPA Region 4-Revised
Titanium	1,000	EPA Region 4
Tungsten	400	EPA Region 4
Uranium	5	EPA Region 4
Vanadium	7.8	Eco-SSL
Zinc	46	Eco-SSL
<b><i>Mineral pollutants</i></b>		
Bromine	10	EPA Region 4
Cyanide, complex	5	EPA Region 4
Cyanide, free	0.9	EPA Region 4
Fluorene	30	EPA Region 4
Iodine	4	EPA Region 4
Sulfur	500	EPA Region 4-Revised
Thiocyanates	1	EPA Region 4-Revised
<b><i>Aromatic hydrocarbons</i></b>		
Benzene	0.01	EPA Region 4
Biphenyl	60	EPA Region 4
Ethylbenzene	0.03	EPA Region 4-Revised
Toluene	0.01	EPA Region 4-Revised
Xylene	0.1	EPA Region 4-Revised

Table A.2. PGDP Soil NFA Screening Values (Continued)

Analyte	PGDP NFA Screening Value (mg/kg)	Source for Screening Value
<b><i>Phenolic compounds</i></b>		
2,3,4,5-Tetrachlorophenol	20	EPA Region 4
2,4,5-Trichlorophenol	4	EPA Region 4
2,4,6-Trichlorophenol	10	EPA Region 4
2,4-Dinitrophenol	20	EPA Region 4
3,4-Dichlorophenol	20	EPA Region 4
3-Chlorophenol	7	EPA Region 4
4-Nitrophenol	7	EPA Region 4
Chlorophenols (total)	0.01	EPA Region 4
Pentachlorophenol	2.1	Eco-SSL
Phenol	0.05	EPA Region 4
<b><i>Polycyclic aromatic hydrocarbons (PAHs)</i></b>		
Low molecular weight PAHs	29	Eco-SSL
High molecular weight PAHs	1.1	Eco-SSL
<b><i>Substituted hydrocarbons</i></b>		
Carbon tetrachloride	0.4	EPA Region 4-Revised
1,2-Dichloroethane	0.02	EPA Region 4-Revised
1,2-Dichloropropane	0.1	EPA Region 4-Revised
2,3,5,6-Tetrachloroaniline	20	EPA Region 4
2,4,5-Trichloroaniline	20	EPA Region 4
2,4-Dichloroaniline	100	EPA Region 4
3,4-Dichloroaniline	20	EPA Region 4
3-Chloroaniline	20	EPA Region 4
Aliphatic chlorinated hydrocarbons (total)	0.1	EPA Region 4
Chloroacetamide	2	EPA Region 4
Chlorobenzene	0.1	EPA Region 4-Revised
Chloroform	0.02	EPA Region 4-Revised
<i>cis</i> -1,4-Dichloro-2-butene	1000	EPA Region 4
Dichlorobenzene	0.1	EPA Region 4-Revised
Dichloromethane	0.4	EPA Region 4-Revised
Hexachlorobenzene	0.05	EPA Region 4-Revised
Hexachlorocyclopentadiene	10	EPA Region 4
Nitrobenzene	40	EPA Region 4
N-nitrosodiphenylamine	20	EPA Region 4
PCBs (total)	0.02	EPA Region 4
Pentachloroaniline	100	EPA Region 4
Pentachlorobenzene	0.05	EPA Region 4-Revised
Tetrachloroethene	0.002	EPA Region 4-Revised
<i>trans</i> -1,4-Dichloro-2-butene	1000	EPA Region 4
Trichloroethene	0.001	EPA Region 4
Vinyl chloride	0.01	EPA Region 4

**Table A.2. PGDP Soil NFA Screening Values (Continued)**

<b>Analyte</b>	<b>PGDP NFA Screening Value (mg/kg)</b>	<b>Source for Screening Value</b>
<b><i>Pesticides</i></b>		
Sum of 4,4'-DDT/4,4'-DDD/4,4'-DDE	0.021	Eco-SSL
Aldrin	0.0006	EPA Region 4-Revised
Atrazine	0.0002	EPA Region 4-Revised
Benzene hexachloride (BHC), alpha	0.0025	EPA Region 4
BHC, beta	0.009	EPA Region 4-Revised
Carbaryl	0.00003	EPA Region 4-Revised
Carbofuran	0.00002	EPA Region 4-Revised
Dieldrin	0.0049	Eco-SSL
Endrin	0.00004	EPA Region 4-Revised
gamma-BHC (Lindane)	0.00005	EPA Region 4
Maneb	0.002	EPA Region 4-Revised
<b><i>Other pollutants</i></b>		
Acrylonitrile	0.000007	EPA Region 4-Revised
Catechol	0.05	EPA Region 4-Revised
Cresols	0.05	EPA Region 4-Revised
Cyclohexane	0.1	EPA Region 4
Diethylphthalate	100	EPA Region 4
Dimethylphthalate	200	EPA Region 4
Di-n-butylphthalate	200	EPA Region 4
Ethylene glycol	960	EPA Region 4-Revised
Pyridine	0.1	EPA Region 4
Styrene	0.3	EPA Region 4-Revised
Tetrahydrofuran	0.1	EPA Region 4
Tetrahydrothiophene	0.1	EPA Region 4

Eco-SSLs are most conservative values presented in individual papers accessed from <http://www.epa.gov/ecotox/ecossl/> in June 2014.

EPA Region 4 screening values taken from <http://www.epa.gov/region04/superfund/images/allprogrammedia/pdfs/tsstablesoilvalues.pdf>; accessed June 2014.

EPA Region 4-Revised screening values were provided by Brett Thomas, EPA Region 4 Ecological Risk Assessor in advance of revisions to Region 4 updates to ERA guidance.

<sup>a</sup>Eco-SSL for beryllium was reviewed but lower LANL value which considers toxicity to plants was considered more appropriate for PGDP screening.

**Table A.3. PGDP Soil NFA Screening Values for Radionuclides**

<b>Radionuclide</b>	<b>NFA (pCi/g)</b>
Americium-241	2.16E+03
Cesium-137	2.08E+01
Neptunium-237	8.14E+02
Plutonium-238	1.75E+03
Plutonium-239	1.27E+03
Plutonium-240	1.27E+03
Technetium-99	2.19E+03
Thorium-230	9.98E+03
Uranium-234	5.14E+03
Uranium-235	2.75E+03
Uranium-238	1.57E+03

NFA = activity (pCi/g) resulting in dose of 0.1 rad/day assuming secular equilibrium of parent and daughter products.

NFA values from RESRAD-BIOTA, Version 1.5, Report for Level 2 (default values, except dose adjusted to 0.1 rad/day) RESRAD-BIOTA software is available at

<http://web.ead.anl.gov/resrad/home2/biota.cfm>.

Table A.4. PGDP Sediment NFA Screening Values

Analyte	PGDP NFA Screening Value	Units	Source for Screening Value
<i>Inorganics</i>			
Aluminum	25,000	mg/kg	KDEP
Antimony	12	mg/kg	EPA Region 4
Arsenic	7.24	mg/kg	EPA Region 4
Cadmium	1	mg/kg	EPA Region 4
Chromium	52.3	mg/kg	EPA Region 4
Cobalt	50	mg/kg	EPA Region 5
Copper	18.7	mg/kg	EPA Region 4
Iron	200	mg/kg	KDEP
Lead	30.2	mg/kg	EPA Region 4
Manganese	1,673	mg/kg	ORNL
Mercury	0.13	mg/kg	EPA Region 4
Methylmercury	0.00001	mg/kg	EPA Region 5
Nickel	15.9	mg/kg	EPA Region 4
Selenium	0.05	mg/kg	KDEP
Silver	2	mg/kg	EPA Region 4
Vanadium	0.2	mg/kg	KDEP
Zinc	124	mg/kg	EPA Region 4
<i>Organic compounds</i>			
Anthracene	57.2	µg/kg	EPA Region 5
Acenaphthene	330	µg/kg	EPA Region 4
Acetone	9.9	µg/kg	EPA Region 5
Benzene	57	µg/kg	KDEP
Benzo(a)anthracene	108	µg/kg	EPA Region 5
Benzo(a)pyrene	150	µg/kg	EPA Region 5
Benzo(k)fluoranthene	240	µg/kg	EPA Region 5
Benzo(b)fluoranthene	10,400	µg/kg	EPA Region 5
Bis(2-ethylhexyl)phthalate	182	µg/kg	EPA Region 4
Carbon disulfide	23.9	µg/kg	EPA Region 5
Carbon tetrachloride	1450	µg/kg	EPA Region 5
Chlordane	1.7	µg/kg	EPA Region 4
Chloroform	121	µg/kg	EPA Region 5
Chrysene	166	µg/kg	EPA Region 5
4,4'-DDD	3.3	µg/kg	EPA Region 4
4,4'-DDE	3.3	µg/kg	EPA Region 4
4,4'-DDT	3.3	µg/kg	EPA Region 4
Total 4,4'-DDT	3.3	µg/kg	EPA Region 4
Diazinon	1.9	µg/kg	KDEP
Dibenzo(a,h)anthracene	33	µg/kg	EPA Region 5
1,2-Dichlorobenzene	50	µg/kg	KDEP
1,3-Dichlorobenzene	170	µg/kg	KDEP
1,4-Dichlorobenzene	12	µg/kg	KDEP
1,1-Dichloroethane	0.575	µg/kg	EPA Region 5
1,2-Dichloroethane	260	µg/kg	EPA Region 5
1,1-Dichloroethene	19.4	µg/kg	EPA Region 5
Dieldrin	3.3	µg/kg	EPA Region 4
Diethylphthalate	295	µg/kg	EPA Region 5

**Table A.4. PGDP Sediment NFA Screening Values (Continued)**

Analyte	PGDP NFA Screening Value	Units	Source for Screening Value
Dioxins, total equivalent	0.0025	µg/kg	EPA Region 4
Endrin	3.3	µg/kg	EPA Region 4
Endosulfan (mixed)	1.94	µg/kg	EPA Region 5
Ethylbenzene	3,600	µg/kg	KDEP
Fluoranthene	330	µg/kg	EPA Region 4
Fluorene	77.4	µg/kg	EPA Region 5
gamma-BHC (Lindane)	3.3	µg/kg	EPA Region 4
Heptachlor epoxide	2.47	µg/kg	EPA Region 5
Indeno(1,2,3-cd)pyrene	200	µg/kg	EPA Region 5
Malathion	0.67	µg/kg	KDEP
Naphthalene	176	µg/kg	EPA Region 5
Phenanthrene	204	µg/kg	EPA Region 5
Total PAHs	1,684	µg/kg	EPA Region 4
Total PCBs	33	µg/kg	EPA Region 4
Pyrene	53	µg/kg	KDEP
Tetrachloroethene	990	µg/kg	EPA Region 5
Toluene	670	µg/kg	KDEP
Toxaphene	0.077	µg/kg	EPA Region 5
1,1,1-Trichloroethane	170	µg/kg	KDEP
1,1,2-Trichloroethane	518	µg/kg	EPA Region 5
Trichloroethene	112	µg/kg	EPA Region 5
2,3,7,8-tetrachlorodibenzo-p-dioxin (2,3,7,8-TCDD)	0.00001	µg/kg	KDEP
Xylenes (total)	1,880	µg/kg	KDEP

KDEP value is taken from the former Kentucky Risk Assessment Guidance 2002 (Appendix D). This information is provided in Appendix F of this document for reference.

EPA Region 4 screening values were taken from <http://www.epa.gov/region4/superfund/programs/riskassess/ecolbul.html#tbl3>; accessed June 2014.

ORNL screening values were taken from Jones et al. 1997.

EPA Region 5 screening values were taken from <http://www.epa.gov/region5/waste/cars/pdfs/ecological-screening-levels-200308.pdf>; accessed June 2014.

**Table A.5. PGDP Sediment NFA Screening Values for Radionuclides**

Radionuclide	NFA (Based on Riparian Animal) (pCi/g)
Americium-241	5.15E+03
Cesium-137	3.13E+03
Neptunium-237	7.63E+03
Plutonium-238	5.73E+03
Plutonium-239	5.87E+03
Plutonium-240	—
Technetium-99	4.14E+04
Thorium-230	1.04E+04
Uranium-234	5.27E+03
Uranium-235	3.79E+03
Uranium-238	2.49E+03

NFA = activity (pCi/g) resulting in dose of 0.1 rad/day assuming secular equilibrium of parent and daughter products.

NFA values from RESRAD-BIOTA, Version 1.5, Report for Level 3 (default values, except dose adjusted to 0.1 rad/day) RESRAD-BIOTA software is available at <http://web.ead.anl.gov/resrad/home2/biota.cfm>.

Table A.6. PGDP Surface Water NFA Screening Values

Analyte	PGDP NFA Screening Value (µg/L)	Source for Screening Value
<b><i>Inorganics</i></b>		
Aluminum	87	EPA Region 4
Antimony	160	EPA Region 4
Arsenic	150	Kentucky WWAH
Arsenic (V)	3.1	ORNL
Barium	4	ORNL
Beryllium	0.53	EPA Region 4
Boron	1.6 <sup>a</sup>	ORNL
Cadmium	0.147 <sup>b</sup>	Kentucky WWAH
Chloride	600,000	Kentucky WWAH
Chlorine	11	NRWQC
Chromium (III)	43.8 <sup>b</sup>	Kentucky WWAH
Chromium (VI)	11	Kentucky WWAH
Cobalt	23	ORNL
Copper	4.62 <sup>b</sup>	Kentucky WWAH
Cyanide, free	5.2	Kentucky WWAH
Hydrogen sulfide	2	Kentucky WWAH
Iron	1,000 <sup>c</sup>	Kentucky WWAH
Lead	1.12 <sup>b</sup>	Kentucky WWAH
Manganese	120	ORNL
Mercury	0.77	Kentucky WWAH
Mercury, methyl	0.0028 <sup>d</sup>	ORNL
Molybdenum	370	ORNL
Nickel	26.04 <sup>b</sup>	Kentucky WWAH
Selenium	5 <sup>e</sup>	NRWQC
Silver	0.012	EPA Region 4
Strontium	1,500	ORNL
Sulfide	2	NRWQC
Thallium	4	EPA Region 4
Tin	73	ORNL
Uranium	2.6	ORNL
Vanadium	20	ORNL
Zinc	59.71 <sup>b</sup>	Kentucky WWAH
Zirconium	17	ORNL
<b><i>Organic compounds</i></b>		
Acenaphthene	17	EPA Region 4
Acetone	1,500	ORNL
Acrolein	2.1 <sup>f</sup>	EPA Region 4
Acrylonitrile	75.5	EPA Region 4
Aldrin	0.3	EPA Region 4
Anthracene	0.73	ORNL
Benzene	53	EPA Region 4
Benzidine	25	EPA Region 4
Benzo(a)anthracene	0.027	ORNL
Benzo(a)pyrene	0.014	ORNL
Benzoic acid	42	ORNL
Benzyl alcohol	8.6	ORNL
BHC, alpha	500	EPA Region 4
BHC, beta	5,000	EPA Region 4
bis(2-Chloroethyl) ether	2,380	EPA Region 4
bis(2-Ethylhexyl)phthalate	0.3	EPA Region 4

**Table A.6. PGDP Surface Water NFA Screening Values (Continued)**

Analyte	PGDP NFA Screening Value (µg/L)	Source for Screening Value
Bromoform	293	EPA Region 4
4-Bromophenyl phenyl ether	12.2	EPA Region 4
2-Butanone	14,000	ORNL
Butylbenzylphthalate	22	EPA Region 4
Carbon disulfide	0.92	ORNL
Carbon tetrachloride	352	EPA Region 4
Chlorobenzene	195	EPA Region 4
Chlordane	0.0043	Kentucky WWAH
Chloroform	289	EPA Region 4
Chloropyrifos	0.041	Kentucky WWAH
2-Chloroethylvinyl ether	3,540	EPA Region 4
2-Chlorophenol	43.8	EPA Region 4
3-Methyl-4-Chlorophenol	0.3	EPA Region 4
Decane	49	ORNL
Demeton	0.1	Kentucky WWAH
4,4'-DDD	0.0064	EPA Region 4
4,4'-DDE	10.5	EPA Region 4
4,4'-DDT	0.001	Kentucky WWAH
Diazanon	0.17	Kentucky WWAH
Dibenzofuran	3.7	ORNL
1,2-Dichlorobenzene	15.8	EPA Region 4
1,3-Dichlorobenzene	50.2	EPA Region 4
1,4-Dichlorobenzene	11.2	EPA Region 4
1,1-Dichloroethane	47	ORNL
1,2-Dichloroethane	2,000	EPA Region 4
1,1-Dichloroethene	303	EPA Region 4
1,2- <i>trans</i> -Dichloroethene	1,350	EPA Region 4
1,2-Dichloroethene (total)	590	ORNL
2,4-Dichlorophenol	36.5	EPA Region 4
1,2-Dichloropropane	525	EPA Region 4
1,3-Dichloropropylene	24.4	EPA Region 4
Dieldrin	0.056	Kentucky WWAH
Diethylphthalate	521	EPA Region 4
Dimethylphthalate	330	EPA Region 4
2,4-Dimethylphenol	21.2	EPA Region 4
Di-n-butylphthalate	9.4	EPA Region 4
2-Methyl-4,6-Dinitrophenol	2.3	EPA Region 4
2,4-Dinitrophenol	6.2	EPA Region 4
2,4-Dinitrotoluene	310	EPA Region 4
Endosulfan, alpha	0.056	Kentucky WWAH
Endosulfan, beta	0.056	Kentucky WWAH
Endosulfan, mixed isomers	0.051	ORNL
Endrin	0.036	Kentucky WWAH
Ethylbenzene	453	EPA Region 4
Fluoranthene	39.8	EPA Region 4
gamma-BHC (Lindane)	0.08	EPA Region 4
Guthion	0.01	Kentucky WWAH
Heptachlor	0.0038	Kentucky WWAH
Heptachlor epoxide	0.0038	Kentucky WWAH
Hexachlorobutadiene	0.93	EPA Region 4
Hexachlorocyclopentadiene	0.07	EPA Region 4
Hexachloroethane	9.8	EPA Region 4

**Table A.6. PGDP Surface Water NFA Screening Values (Continued)**

Analyte	PGDP NFA Screening Value (µg/L)	Source for Screening Value
Hexane	0.58	ORNL
2-Hexanone	99	ORNL
1,2-Diphenylhydrazine	2.7	EPA Region 4
Isophorone	1,170	EPA Region 4
Malathion	0.1	Kentucky WWAH
Methoxychlor	0.03	Kentucky WWAH
Methyl bromide	110	EPA Region 4
Methyl chloride	5,500	EPA Region 4
Methylene chloride	1,930	EPA Region 4
1-Methylnaphthalene	2.1	ORNL
2-Methylphenol	13	ORNL
Mirex	0.001	Kentucky WWAH
Naphthalene	62	EPA Region 4
Nitrobenzene	270	EPA Region 4
2-Nitrophenol	3,500	EPA Region 4
4-Nitrophenol	82.8	EPA Region 4
N-nitrosodiphenylamine	58.5	EPA Region 4
2-Octanone	8.3	ORNL
Parathion	0.013	Kentucky WWAH
1-Pentanol	110	ORNL
Pentachlorophenol	9.05 <sup>g</sup>	Kentucky WWAH
Pentachlorobenzene	50	EPA Region 4
Phthalate esters	3	KDEP
Phenol	256	EPA Region 4
Polychlorinated biphenyls	0.014	Kentucky WWAH
2-Propanol	7.5	ORNL
1,2,4,5-Tetrachlorobenzene	50	EPA Region 4
Tetrachloroethene	84	EPA Region 4
2,3,7,8-TCDD-Dioxin	0.00001	EPA Region 4
1,1,2,2-Tetrachloroethane	240	EPA Region 4
Toluene	175	EPA Region 4
Toxaphene	0.0002	Kentucky WWAH
Tributyltin	0.072	Kentucky WWAH
Trichloroethene	47	ORNL
1,2,4-Trichlorobenzene	44.9	EPA Region 4
1,1,1-Trichloroethane	528	EPA Region 4
1,1,2-Trichloroethane	940	EPA Region 4
2,4,6-Trichlorophenol	3.2	EPA Region 4
Vinyl acetate	16	ORNL
m-Xylene	1.8	ORNL
Xylenes (total)	13	ORNL

ORNL source is Tier II values from Suter and Tsao 1996.

EPA Region 4 values accessed from <http://www.epa.gov/region4/superfund/programs/riskassess/ecolbul.html#tb11>; accessed June 2014.

Kentucky WWAH values are found in Table 1 of 401 KAR 10:031.

NRWQC values accessed from <http://water.epa.gov/scitech/swguidance/standards/criteria/current/index.cfm#D>; accessed June 2014

KDEP value is taken from the former Kentucky Risk Assessment Guidance 2002 (Appendix D). This information is provided in Appendix F of this document for reference.

<sup>a</sup> ORNL value chosen over EPA Region 4 value of 750; EPA value based on crop irrigation.

<sup>b</sup> Hardness dependent, uses minimum hardness value from Bayou Creek system, 44 (mg/L as CaCO<sub>3</sub>) from Birge and Price 2002).

<sup>c</sup> The chronic criterion for iron shall not exceed 3.5 mg/L if aquatic life has not been shown to be adversely affected.

<sup>d</sup> ORNL value chosen over NRWQC value; ORNL value is more conservative.

<sup>e</sup> NRWQC value chosen over Kentucky WWAH value; NRWQC value is more conservative.

<sup>f</sup> EPA Region 4 value chosen over Kentucky WWAH value; EPA value is more conservative.

<sup>g</sup> pH dependent, assumes a pH of 7.3 (average of values from Birge and Price 2002).



**Table A.7. PGDP NFA Surface Water Values for Radionuclides**

<b>Radionuclide</b>	<b>NFA (Based on Aquatic Animal) (pCi/L)</b>
Americium-241	4.38E+01
Cesium-137	1.05E+02
Neptunium-237	6.85E+00
Plutonium-238	1.76E+01
Plutonium-239	1.87E+01
Plutonium-240	—
Technetium-99	2.47E+05
Thorium-230	2.57E+02
Uranium-234	2.02E+01
Uranium-235	2.18E+01
Uranium-238	2.24E+01

NFA = activity (pCi/g) resulting in dose of 0.1 rad/day assuming secular equilibrium of parent and daughter products.

NFA values from RESRAD-BIOTA, Version 1.5, Report for Level 3 (default values, except dose adjusted to 0.1 rad/day) RESRAD-BIOTA software is available at <http://web.ead.anl.gov/resrad/home2/biota.cfm>.

**Table A.8. NOAEL-based TRVs for PGDP Wildlife Receptors**

<b>Chemical</b>	<b>Mammalian TRV (mg dw/kg bw/d)</b>	<b>Bird TRV (mg dw/kg bw/d)</b>	<b>Source</b>
4,4'-DDT and its metabolites	0.147	0.227	Eco-SSL
1,2-Dichloroethane	49.7	4.6	LANL Ecorisk database
Acrylonitrile	0.46	Not Available	CHPPM
Aldrin	0.2	Not Available	LANL Ecorisk database
Aluminum	1.93	109.7	LANL Ecorisk database
Antimony	0.059	Not Available	Eco-SSL
Arsenic	0.25	2.24	EPA Region 4/Eco-SSL
Barium	51.8	20.8	Eco-SSL/EPA Region 4
Benzene	26.36	Not Available	LANL Ecorisk database
Beryllium	0.532	Not Available	Eco-SSL
BHC, alpha	87	Not Available	LANL Ecorisk database
BHC, beta	0.4	38.3	LANL Ecorisk database
Boron	28	2.92	LANL Ecorisk database
Cadmium	0.77	1.47	Eco-SSL
Carbon tetrachloride	4.8	Not Available	LANL Ecorisk database
Chlorobenzene	60	Not Available	LANL Ecorisk database
Chloroform	15	Not Available	LANL Ecorisk database
Chromium (III and total)	2.4	2.66	Eco-SSL
Chromium (VI)	9.24	Not Available	Eco-SSL
Cobalt	7.33	7.61	Eco-SSL
Copper	5.6	4.05	Eco-SSL
Cyanide (total)	68.7	0.04	LANL Ecorisk database
Dieldrin	0.015	0.0709	Eco-SSL
Diethylphthalate	4600	Not Available	LANL Ecorisk database
Di-n-butylphthalate	1340	0.14	LANL Ecorisk database
Endrin	0.092	0.01	LANL Ecorisk database
Hexachlorobenzene	7.1	5	LANL Ecorisk database
Hexachlorocyclopentadiene	3.8	Not Available	CHPPM
High Molecular Weight PAHs	0.615	0.072	Eco-SSL/Stickel and Dieter 1979
Lead	4.7	1.63	Eco-SSL
Lithium	1.13	Not Available	LANL Ecorisk database
Low Molecular Weight PAHs	65.6	2.23	Eco-SSL/Stickel and Dieter 1979
Manganese	51.5	179	Eco-SSL
Mercury (inorganic)	1.41	0.019	LANL Ecorisk database
Mercury (methyl)	0.032	0.0064	LANL Ecorisk database
Molybdenum	NA	3.5	LANL Ecorisk database
Nickel	1.7	6.71	Eco-SSL
PCBs (total)	0.36	0.09	CHPPM
Pentachlorobenzene	7.25	Not Available	CHPPM
Pentachlorophenol	8.42	6.73	Eco-SSL
Phenol	60	Not Available	LANL Ecorisk database
Selenium	0.143	0.29	Eco-SSL
Silver	6.02	2.02	Eco-SSL
Tetrachloroethene	2	Not Available	LANL Ecorisk database
Thallium	0.0071	0.35	LANL Ecorisk database
Tin	23.4	6.8	Sample et al. 1996
Toluene	26	Not Available	LANL Ecorisk database

**Table A.8. NOAEL-based TRVs for PGDP Wildlife Receptors (Continued)**

<b>Chemical</b>	<b>Mammalian TRV (mg dw/kg bw/d)</b>	<b>Bird TRV (mg dw/kg bw/d)</b>	<b>Source</b>
Trichloroethene	100	Not Available	LANL Ecorisk database
Uranium	6.1	78	LANL Ecorisk database
Vanadium	4.16	0.344	Eco-SSL
Vinyl chloride	0.17	Not Available	LANL Ecorisk database
Xylene	2.1	107	LANL Ecorisk database
Zinc	20.8	66.1	EPA Region 4/Eco-SSL

Eco-SSLs are most conservative values presented in individual papers accessed from <http://www.epa.gov/ecotox/ecossl/>; accessed June 2014.

EPA Region 4 values are from May 29, 2014, e-mail from Brett Thomas, EPA Region 4 Ecological Risk Assessor.

CHPPM (<http://el.erdc.usace.army.mil/arams/USACHPPM2c.zip> downloaded from <http://el.erdc.usace.army.mil/arams/databases.html>; accessed August 2014).

Stickel, L. and M. Dieter. 1979. Ecological and physiological/toxicological effects of petroleum on aquatic birds: A summary of research activities FY76 through FY78. FWS/OBS-79/23, July 1979. Calculated assuming a FIR of 0.1 kg/day (captive bird) and a 1 kg BW.

**Table A.9. LOAEL-based TRVs for PGDP Wildlife Receptors**

<b>Chemical</b>	<b>Mammalian TRV (mg dw/kg bw/d)</b>	<b>Bird TRV (mg dw/kg bw/d)</b>	<b>Source</b>
Aluminum	19.3	549	LANL Ecorisk database/ EPA Region 4
Antimony	0.59	Not Available	Eco-SSL
Arsenic	1.26	3.55	Sample et al. 1996/Eco-SSL
Barium	119	131	Eco-SSL/LANL Ecorisk database
Beryllium	0.63	Not Available	Eco-SSL
Boron	280	14.5	LANL Ecorisk database
Cadmium	1	6.35	Eco-SSL
Chromium III	58.2	5.0	Eco-SSL/Sample et al. 1996
Chromium (VI)	16.4	Not Available	EPA Region 4
Cobalt	18.9	18.3	Eco-SSL
Copper	6.79	4.68	Eco-SSL
High Molecular Weight PAHs	Not Available	0.072	Eco-SSL/Stickel and Dieter 1979
Lead	5	1.94	Eco-SSL
Low Molecular Weight PAHs	Not Available	2.23	Eco-SSL/Stickel and Dieter 1979
Manganese	146	377	Eco-SSL
Mercury	0.025	0.078	Sample et al. 1996 (mink) / GLWQI (EPA 1995)
Nickel	2.71	18.6	Eco-SSL
Selenium	0.157	0.37	Eco-SSL
Silver	45.3	20.2	Eco-SSL
Thallium	0.071	3.5	LANL Ecorisk database
Vanadium	5.11	0.413	Eco-SSL
Zinc	104	170	Eco-SSL

Notes: LOAEL TRVs from Eco-SSLs are interpreted from Appendix 4-1 of the Eco-SSL document.

EPA Region 4 values are from May 29, 2014, e-mail from Brett Thomas, EPA Region 4 Ecological Risk Assessor.

Stickel, L. and M. Dieter. 1979. Ecological and physiological/toxicological effects of petroleum on aquatic birds: A summary of research activities FY76 through FY78. FWS/OBS-79/23, July 1979. Calculated assuming a FIR of 0.1 kg/day (captive bird) and a 1 kg BW.

Tables A.10 and A.11 present the Environmental Contaminants in Wildlife (ECW) tissue residues for birds and mammals. These tissue residue levels were taken from the Risk Assessment Information System (RAIS) (located at [http://rais.ornl.gov/tools/eco\\_search.php](http://rais.ornl.gov/tools/eco_search.php)).

**Table A.10. Tissue Residue Benchmarks for Birds**

Analyte	Avian Blood mg/kg	Avian Bone mg/kg	Avian Brain mg/kg	Avian Carcass mg/kg	Avian Diet mg/kg	Avian Egg mg/kg	Avian Kidney mg/kg	Avian Liver mg/kg
Aroclor-1242						1		
Aroclor-1254						4		
Cadmium (Diet)					2		100	40
DDD			50					
DDE, p,p'-			150		0.1	0.1		
DDT			10					
DDT/DDE/DDD (total)			10					
Dieldrin			1		2	0.7		1
Endrin				0.36	3	0.27		
Heptachlor Epoxide						1.5		
Hexachlorobenzene						100		
Lead and Compounds	0.2	10					3	2
Mercury (elemental)					10	0.5	20	20
Methoxychlor						17		
Mirex						20		
Selenium						3		3
Toxaphene				40		50		

**Table A.11. Tissue Residue Benchmarks for Mammals**

Analyte	Mammal Blood mg/kg	Mammal Fat mg/kg	Mammal Kidney mg/kg	Mammal Liver mg/kg
Cadmium (Diet)			100	
DDD				
Fluoride	10			
Lead and Compounds	0.2			
Mercury (elemental)			30	30
Polychlorinated Biphenyls (high risk)		10		4

**THIS PAGE INTENTIONALLY LEFT BLANK**

**APPENDIX B**

**EXPOSURE PARAMETERS FOR PGDP MODEL  
ECOLOGICAL RECEPTORS**

**THIS PAGE INTENTIONALLY LEFT BLANK**

**Table B.1. Exposure Parameters for PGDP Model Ecological Receptors**

<b>Receptor</b>	<b>Parameter</b>	<b>Value</b>	<b>Details and Sources</b>
Little brown bat	Body weight	0.0075 kg	Gould 1955 Sample and Suter 1994
	Food ingestion rate (FIR) <sup>a</sup>	0.48 kg/kg BW/day	Lactating; assuming body weight of 0.0077 kg Anthony and Kunz 1977 in Sample et al. 1997
	Water ingestion rate	0.16 L/kg BW/day	Sample et al. 1997
	Soil/sediment ingestion rate	0% of FIR	Unlikely to contact soil routinely
Short-tailed shrew	Body weight	0.015 kg	15 g; both sexes, New Hampshire Schlesinger and Potter 1974 in EPA 1993
	FIR <sup>a</sup>	0.56 kg/kg BW/day	EPA 1993 (arithmetic mean of values)
	Water ingestion rate	0.223 L/kg BW/day	EPA 1993
	Soil/sediment ingestion rate	3.7% of FIR	Not available <sup>b</sup>
American woodcock	Body weight	0.15 kg	154.6 g; arithmetic mean of juveniles, both sexes, central Massachusetts Sheldon 1967 in EPA 1993
	FIR <sup>a</sup>	1.16 kg/kg BW/day	Adjusted from both sexes, (winter earthworm diet), Louisiana (captive) Stickel et al. 1965 in EPA 1993 using 1.5 captive/wild correction factor
	Water ingestion rate	0.10 L/kg BW/day	EPA 1993
	Soil/sediment ingestion rate	10.4% of FIR	EPA 1993, Table 4-4
American robin	Body weight	0.0773 kg	77.3 g; arithmetic mean, adult, both sexes, all seasons, Pennsylvania Clench and Leberman 1978 in EPA 1993
	FIR <sup>a</sup>	1.52 kg/kg BW/day	Arithmetic mean, both sexes, all ages, free living, Kansas Hazelton et al. 1984 in EPA 1993
	Water ingestion rate	0.14 L/kg BW/day	EPA 1993
	Soil/sediment ingestion rate	10.4% of FIR	LANL 2012



**Table B.1. Exposure Parameters for PGDP Model Ecological Receptors (Continued)**

<b>Receptor</b>	<b>Parameter</b>	<b>Value</b>	<b>Details and Sources</b>
Marsh wren	Body weight	0.0094 kg	9.4 g; adult female, Georgia Kale 1965 in EPA 1993
	FIR <sup>a</sup>	0.99 kg/kg BW/day	Adult female, EPA 1993
	Water ingestion rate	0.28 L/kg BW/day	Adult female, EPA 1993
	Soil/sediment ingestion rate	10.4% of FIR	EPA 1993 value for an American woodcock
Mustelid (Mink)	Body weight	0.78 kg	781.6 g; arithmetic mean, both sexes, all ages, Montana Mitchell 1961 in EPA 1993
	FIR <sup>a</sup>	0.46 kg/kg BW/day	Mature male, farm raised NRC 1982
	Water ingestion rate	0.08 L/kg BW/day	EPA Region 4 <sup>b</sup>
	Soil/sediment ingestion rate	9.4% of FIR	EPA Region 4 <sup>b</sup>
Belted kingfisher	Body weight	0.136 kg	136 g; adult, both sexes, Pennsylvania Brooks and Davis 1987 in EPA 1993
	FIR <sup>a</sup>	0.5 kg/kg BW/day	Adult, both sexes, north central lower Michigan Alexander 1977 in EPA 1993
	Water ingestion rate	0.11 L/kg BW/day	EPA 1993
	Soil/sediment ingestion rate	0.5% of FIR	
Green Heron	Body weight	0.2 kg	EPA Region 4 <sup>b</sup>
	FIR <sup>a</sup>	0.6 kg/kg BW/day	EPA Region 4 <sup>b</sup>
	Water ingestion rate	0.117 L/kg BW/day	EPA Region 4 <sup>b</sup>
	Soil/sediment ingestion rate	2% of FIR	EPA Region 4 <sup>b</sup>
Mallard Duck	Body weight	1.134 kg	EPA Region 4 <sup>b</sup>
	FIR <sup>a</sup>	0.278 kg/kg BW/day	EPA Region 4 <sup>b</sup>
	Water ingestion rate	0.058 L/kg BW/day	EPA Region 4 <sup>b</sup>
	Soil/sediment ingestion rate	11% of FIR	EPA Region 4 <sup>b</sup>

**Table B.1. Exposure Parameters for PGDP Model Ecological Receptors (Continued)**

Receptor	Parameter	Value	Details and Sources
<i>Microtus spp.</i> (Meadow Vole)	Body weight	0.02 kg	21.2 g; adult, both sexes, all seasons, south Indiana Myers and Krebs 1971 in EPA 1993
	FIR <sup>a</sup>	0.35 kg/kg BW/day	No sex or age given, Russia Ognev 1950 in EPA 1993
	Water ingestion rate	0.21 L/kg BW/day	Highest of 2 studies, Ernst 1968 in EPA 1993
	Soil/sediment ingestion rate	2.4% of FIR	EPA 1993 Table 4-4
Long-Tailed Weasel	Body weight	0.19 kg	EPA 1999
	FIR <sup>a</sup>	0.31 kg/kg BW/day	EPA 1999
	Water ingestion rate	0.12 L/kg BW/day	EPA 1999
	Soil/sediment ingestion rate	2.8% of FIR	EPA 1999
Bobwhite quail	Body weight	0.16 kg	157.25 g; arithmetic mean, adult, both sexes, winter and summer, west Rio Grande, Texas Guthery et al. 1988 in EPA 1993
	FIR <sup>a</sup>	0.117 kg/kg BW/day	
	Water ingestion rate	0.13 L/kg BW/day	Highest of two values from Koerth & Guthery, 1990 and EPA 1993
	Soil/sediment ingestion rate	10.4% of FIR	EPA 1993, Table 4-4 value for woodcock
Screech owl	Body weight	0.14 kg	From range of males (0.088 to 0.178 kg) and females (0.092 to 0.22 kg) Earhart and Johnson 1970
	FIR <sup>a</sup>	0.385 kg/kg BW/day	Eq. (3-3) EPA 1993, 0.016 kg/d (dry matter) 70% water content
	Water ingestion rate	0.113 L/kg BW/day	EPA 1993 equation 3-15
	Soil/sediment ingestion rate	2.0% of FIR	LANL 2012 default value for carnivorous bird
Smallmouth bass	Body weight	0.086 kg	Not available <sup>b</sup>
	FIR <sup>a</sup>	2.0 kg/kg BW/day	Not available <sup>b</sup>

<sup>a</sup> All FIR values are in wet weight.

<sup>b</sup> Original sources not available. These values should be used as a starting point for model inputs.

*Sources:*

- Alexander, G. R. 1977. "Food of Vertebrate Predators on Trout Waters in North Central Lower Michigan," *Michigan Academician* **10**: 181-195.
- Anthony, E. L. P. and T. H. Kunz 1977. "Feeding Strategies of the Little Brown Bat, *Myotis lucifugus*, in Southern New Hampshire," *Ecology* **58**: 775-786.
- Brooks, R. P. and W. J. Davis 1987. "Habitat Selection by Breeding Belted Kingfishers (*Ceryle alcyon*)," *Am. Midl. Nat.* **117**: 63-70.
- Clench, M. H. and R. C. Leberman 1978. "Weights of 151 Species of Pennsylvania Birds Analyzed by Month, Age, and Sex," *Bull. Carnegie Mus. Nat. Hist.*
- Earhart and Johnson 1970. "Size, dimorphism, and food habits of North American owls," *Condor* **72**(3): 251-264.
- EPA 1993. *Wildlife Exposure Factors Handbook*, Vol. 1, EPA/600/R-93/187a, Office of Research and Development, Washington, DC, December.
- EPA 1999. *Data Collection for the Hazardous Waste Identification Rule*. "Section 12.0 Ecological Exposure Factors," Office of Solid Waste, Washington, DC, October, accessed from <http://www.epa.gov/osw/hazard/wastetypes/wasteid/hwirwste/pdf/risk/data/s0042.pdf> in April 2015.
- Ernst, C. H. 1968. "Kidney Efficiencies of Three Pennsylvania Mice," *Trans. Kentucky Acad. Sci.* **29**: 21-24.
- Gould, E. D. 1955. "The Feeding Efficiency of Insectivorous Bats," *J. Mammal* **36**: 399-407.
- Guthery, F. S. et al. 1988. "Reproduction of Northern Bobwhites in Semiarid Environments," *J. Wildl. Manage.* **52**: 144-149.
- Hazelton, P. K., R. J. Robel, and A.D. Dayton. 1984. "Preferences and influence of paired food items on energy intake of American robins and gray catbirds." *J. Wildl. Manage.* **48**: 198-202.

### Table B.1. Exposure Parameters for PGDP Model Ecological Receptors (Continued)

- Kale, H. W., II 1965. "Ecology and Bioenergetics of the Long-Billed Marsh Wren *Telmataidytes palustris griseus* (Brewster) in Georgia Salt Marshes," *Publ. Nuttall. Ornith.*, Club No. 5.
- Koerth, N. E. and F. S. Guthery 1990. "Water Requirements of Captive Northern Bobwhites Under Subtropical Seasons," *J. Wildl. Manage.* **12**: 46-57.
- LANL (Los Alamos National Laboratory) 2012. "Ecorisk Database (Release 3.1)," on CD, LA-UR-12-24548, Los Alamos National Laboratory, Los Alamos, NM, October.
- Mitchell, J. L. 1961. "Mink Movements and Populations on a Montana River," *J. Wildl. Manage.* **25**: 48-54.
- Myers, J. H. and C. J. Krebs 1971. "Genetic, Behavioral, and Reproductive Attributes of Dispersing Field Voles *Microtus pennsylvanicus* and *Microtus ochrogaster*," *Ecol. Monogr.* **41**: 53-78.
- NRC (National Research Council) 1982. *Nutrient Requirements of Mink and Foxes*, 2nd Ed., Committee on Animal Nutrition, National Research Council, National Academy Press, Washington DC.
- Ognev, S. I. 1950. *Mammals of the U.S.S.R. and Adjacent Countries*, Translated from Russian by Israel Program for Scientific Translations (1964), Jerusalem, 626 pp.
- Sample, B. E., and G. W. Suter II 1994. *Estimating Exposure of Terrestrial Wildlife to Contaminants*, ES/ER/TM-125.
- Sample, B. E., M. S. Alpin, R. A. Efrogmson, G.W. Suter, and C.J.E. Welsh. 1997. *Methods and Tools for Estimation of the Exposure of Terrestrial Wildlife to Contaminants*, ORNL/TM-13391, Office of Environmental Policy and Assistance. Oak Ridge National Laboratory, Oak Ridge, TN, October.
- Schlesinger, W. H. and G. L. Potter 1974. "Lead, Copper, and Cadmium Concentrations in Small Mammals in the Hubbard Brook Experimental Forest," *Oikos* **25**: 148-152.
- Sheldon, W. G. 1967. *The Book of the American Woodcock*, University of Massachusetts Press, Amherst, MA.
- Stickel, W. H. et al. 1965. "Effects of Heptachlor-Contaminated Earthworms on Woodcocks," *J. Wildl. Manage.* **29**: 133-146.

## **APPENDIX C**

### **CALCULATING PRELIMINARY HAZARD QUOTIENTS**

**THIS PAGE INTENTIONALLY LEFT BLANK**

## CALCULATING PRELIMINARY HQS

Preliminary hazard quotients (HQs) for ecological risk assessments (ERAs) at Paducah Gaseous Diffusion Plant (PGDP) sites are calculated in Step 3a for wildlife receptors potentially exposed indirectly (via the food web) and/or directly (through incidental ingestion of contaminated abiotic media) to chemicals of potential ecological concern (COPECs) in surface soil, surface water, sediment, or groundwater potentially discharging as surface water. The equations used to calculate preliminary HQs are presented below. These equations also may be used to calculate HQs in Step 7 with the appropriate toxicity reference value (TRV).

An HQ is the ratio of the average daily dose (ADD) and the TRV. The ADD (mg COPEC/kg receptor/day) is an estimate of how much COPEC is ingested per day over the period of exposure. The TRV for preliminary HQs for wildlife receptors at PGDP sites is the no observed adverse effect level (NOAEL). The NOAEL (mg COPEC/kg receptor/day) is an estimate of the highest average amount of COPEC that the receptor can ingest per day over a relatively long period without experiencing an adverse effect. Thus,

$$HQ = ADD/NOAEL$$

The preliminary ADD for wildlife receptors exposed directly by ingestion to COPECs in an environmental medium at a site is calculated as the product of the ingestion rate (IR) for that medium and the maximum measured medium concentration at the site:

$$ADD \text{ (mg/kg/day)} = \text{medium concentration (mg/kg or mg/L)} \times IR \text{ (kg/kg/day or L/kg/day)}$$

The preliminary ADD for wildlife receptors exposed indirectly to COPECs in an environmental medium at a site is calculated as the product of the IR (kg tissue/kg receptor/day) and the maximum measured tissue concentration (mg COPEC/kg tissue) in food organisms exposed to the medium at the site:

$$ADD \text{ (mg/kg/day)} = \text{food tissue concentration (mg/kg)} \times IR \text{ (kg/kg/day)}$$

If site-specific tissue data are not available, the ADD is calculated as the product of the maximum detected concentration in the abiotic medium, the appropriate biotransfer factor for the food organisms exposed to that medium, and the IR for the receptor:

- For wildlife receptors exposed to COPECs in soil-dwelling invertebrates, the biotransfer factor is the unitless soil-to-invertebrate tissue bioaccumulation factor ( $BAF_i$ ), and the ADD is calculated as follows:

$$ADD = \text{soil concentration (mg/kg)} \times BAF_i \times IR$$

- For wildlife receptors exposed to COPECs in small vertebrate prey, such as small mammals and birds, the biotransfer factor is the unitless prey tissue  $BAF_v$ , and the ADD is calculated as follows:

$$ADD = \text{soil concentration (mg/kg)} \times BAF_v \times IR$$

- For wildlife receptors exposed indirectly to COPECs in surface water and groundwater through ingestion of aquatic biota (e.g., fish and crayfish), the biotransfer factor is the BCF for the contaminant in fish tissue ( $BCF_{fish}$ ), and the ADD is calculated as follows:

$$ADD = \text{water concentration } (\mu\text{g/L}) \times BCF (L/\mu\text{g}) \times IR$$

- For wildlife receptors exposed indirectly to COPECs in sediment through ingestion of sediment-dwelling biota (e.g., crayfish and benthic insect larvae), the biotransfer factor is the unitless BAF for the contaminant in invertebrate tissue ( $BAF_i$ ), and the ADD is calculated as follows:

$$ADD = \text{sediment concentration } (\text{mg/kg}) \times BAF_i \times IR$$

When a wildlife receptor is exposed directly and indirectly by ingestion, the ADD for direct consumption of the abiotic medium is added to the ADD for indirect consumption (ingestion of food).

Table 1 in the main text (Methods for Conducting Risk Assessments and Risk Evaluations at the Paducah Gaseous Diffusion Plant, Paducah, Kentucky) presents the values of IR for calculating preliminary HQs for model receptors exposed to substances in food at PGDP sites. EPA (1993) and other sources give ingestion rates for abiotic media. Table C.1 presents a list of substances with published soil-to-invertebrate BAFs or water-to-fish BCFs, including values for substances considered by Kentucky Department for Environmental Protection (KDEP) to be bioaccumulative. Values for BAFs and BCFs for radionuclides can be obtained from Baes et al. 1984, PNNL 2003, or other literature sources.

For carnivorous fish, the HQ is calculated as the ratio of the estimated body burden for fish at the site and the TRV body burden for fish. Fish body burdens can be estimated as the product of the maximum concentration of matter ingested by the fish and the biotransfer factor for fish (BAF) plus the component from water, which is estimated as the product of the water concentration and the BCF for fish.

For wildlife receptors, the ADD depends on how many of the food items described above comprise the diet of the receptor. The general wildlife dose equation for dietary exposures (from Section 4.1.2.1 and Figure 4.8 of EPA 1993) is provided below:

$$ADD_{tot} = [(\sum_k^{i=1} (C_k \times FR_k \times NIR_k)) + (C_k \times FS \times IR_{total} (\text{dry weight})) + (C_{water} \times IR_{water})]$$

$ADD_{tot}$  = Potential average daily dose (e.g., in mg/kg-day).

$C_k$  = Average contaminant concentration in the  $k^{\text{th}}$  type of food (e.g., in mg/kg wet weight).

$FR_k$  = Fraction of intake of the  $k^{\text{th}}$  food type that is contaminated (unitless). For example, if the  $k^{\text{th}}$  component of an animal's diet were salmon,  $FR_k$  for salmon would equal the fraction of the salmon consumed that is contaminated at level  $C_k$ . If all of the salmon consumed were contaminated at level  $C_k$ , then  $FR_k$  would equal one.

$NIR_k$  = Normalized ingestion rate of the  $k^{\text{th}}$  food type on a wet-weight basis (e.g., in g/g-day).

FS = Fraction of soil in diet (as percentage of diet on a dry-weight basis divided by 100; unitless).

$IR_{total}$  = Food ingestion rate on a dry-weight basis (e.g., in kg/day). Nagy's (1987) equations for estimating FI rates on a dry-weight basis (presented in Section 3.1) can be used to estimate a value for this factor. If the equations for estimating FI rates on a wet-weight basis presented in Section 4.2 are used, conversion to ingestion rates on a dry-weight basis would be necessary.

$C_{water}$  = Average contaminant concentration in water.

$IR_{water}$  = Water ingestion rate.

## REFERENCES

- Baes, C. F., R. Sharp, A. Sjoreen, and R. Shor 1984. *A Review and Analysis of Parameters for Assessing Transport of Environmentally Released Radionuclides through Agriculture*, ORNL-5786, Oak Ridge National Laboratory, Oak Ridge, TN, September.
- EPA (U.S. Environmental Protection Agency) 1993. *Wildlife Exposure Factors Handbook, Vol. 1*, EPA/600/R-93/187a, Office of Research and Development, Washington, DC, December.
- PNNL (Pacific Northwest National Laboratory) 2003. *Literature Review and Assessment of Plant and Animal Transfer Factors Used in Performance Assessment Modeling*. NUREG/CR-6825, PNNL-1432. Office of Nuclear Regulatory Research, U.S. Nuclear Regulatory Commission, Washington, DC, August.



**Table C.1. Example Soil-to-Invertebrate and Water-to-Fish Bioaccumulation Factors**

Analyte	Soil-to-Invertebrate Animal (BAF <sub>i</sub> )		Water-to-Fish Bioconcentration Factors (BCF)	
	(kg <sub>soil</sub> /kg <sub>tissue</sub> )	Reference	(L/kg)	Reference
<b>INORGANICS</b>				
Aluminum	2.20E-01	EPA 1999	2.70E+00	EPA 1999
Antimony	$C_e = C_s$	EPA 2007	4.00E+01	EPA 1999
Arsenic	$\ln(C_e)=0.706 \times \ln(C_s)-1.421$	EPA 2007	1.14E+02	EPA 1999
Arsenic (III)	1.10E-01	EPA 1999	—	—
Arsenic (V)	1.10E-01	EPA 1999	—	—
Barium	$C_e = 0.091 \times C_s$	EPA 2007	4.00E+00	RAIS 2010
Beryllium	$C_e = 0.045 \times C_s$	EPA 2007	6.20E+01	EPA 1999
Cadmium	$\ln(C_e)=0.795 \times \ln(C_s)+2.114$	EPA 2007	5.00E+03	KDEP
Chromium	$C_e = 0.306 \times C_s$	EPA 2007	5.50E+02	KDEP
Cobalt	$C_e = 0.122 \times C_s$	EPA 2007	3.00E+02	RAIS 2010
Copper	$C_e = 0.515 \times C_s$	EPA 2007	5.89E+03	KDEP
Cyanide	1.12E+00	EPA 1999	6.33E+02	EPA 1999
Fluoride	1.00E+00	DOE 1994	—	—
Fluorine	1.00E+00	DOE 1994	1.00E+01	RAIS-R 2010
Iodine	1.00E+00	DOE 1994	—	—
Lanthanum	1.00E+00	DOE 1994	—	—
Lead	$\ln(C_e)=0.807 \times \ln(C_s)-0.218$	EPA 2007	1.41E+05	KDEP
Lithium	1.00E+00	DOE 1994	—	—
Manganese	$\ln(C_e)=0.682 \times \ln(C_s)-0.809$	EPA 2007	4.00E+02	RAIS 2010
Mercury	3.30E+01	KDEP	1.00E+03	RAIS 2010
Methyl mercury	8.50E+00	EPA 1999	2.51E+06	KDEP
Nickel	2.00E-02	EPA 1999	7.80E+01	EPA 1999
Selenium	$\ln(C_e)=0.733 \times \ln(C_s)-0.075$	EPA 2007	1.29E+02	EPA 1999
Silver	$C_e = 2.045 \times C_s$	EPA 2007	8.77E+01	EPA 1999
Thallium	$C_e = 1.38 \times C_s$	EPA 2014	1.00E+04	EPA 1999
Tin	—	—	2.57E+03	KDEP
Vanadium	$C_e = 0.042 \times C_s$	EPA 2007	1.00E-02	DOE 1994
Uranium	2.20E-01	EPA 1999	1.00E+01	RAIS-R 2010
Zinc	$\ln(C_e)=0.328 \times \ln(C_s)+4.449$	EPA 2007	2.06E+03	EPA 1999
<b>ORGANICS</b>				
<b>Volatile organic compounds</b>				
Acetone	5.00E-02	EPA 1999	3.16E+00	RAIS 2010
Benzene	5.00E-02	DOE 1994	4.27E+00	RAIS 2010
Carbon tetrachloride	1.20E+01	EPA 1999	3.00E+01	EPA 1999
Chlorobenzene	5.00E-02	DOE 1994	1.78E+01	RAIS 2010
Chloroform	2.82E+00	EPA 1999	3.59E+00	EPA 1999
1,1,2,2-Tetrachloroethane	—	—	1.30E+01	RAIS 2010
1,2-Dichloroethane	5.00E-02	DOE 1994	4.40E+00	RAIS 2010
1,2-Dichloroethene	5.00E-02	DOE 1994	1.11E+01	RAIS 2010
1,4-Dichlorobenzene	—	—	1.80E+03	KDEP
Ethylbenzene	5.00E-02	DOE 1994	5.56E+01	RAIS 2010
Methylene chloride	5.00E-02	DOE 1994	2.31E+01	RAIS 2010
Methyl ethyl ketone	5.00E-02	DOE 1994	3.16E+00	RAIS 2010
4-chloro-3-methylphenol	—	—	1.10E+02	DOE 1994
4-Methyl-2-pentanone	5.00E-02	DOE 1994	6.00E+00	DOE 1994
Pentachlorobenzene	—	—	2.60E+05	KDEP
Tetrachloroethene	5.00E-02	DOE 1994	5.20E+01	RAIS 2010
Toluene	5.00E-02	DOE 1994	8.32E+00	RAIS 2010
Trichloroethene	5.00E-02	DOE 1994	1.60E+01	RAIS 2010
Vinyl chloride	6.20E-01	EPA 1999	5.47E+00	RAIS 2010
Xylene, total	5.00E-02	DOE 1994	1.41E+01	RAIS 2010

Table C.1. Example Soil-to-Invertebrate and Water-to-Fish Bioaccumulation Factors (Continued)

Analyte	Soil-to-Invertebrate Animal (BAF <sub>i</sub> )		Water-to-Fish Bioconcentration Factors (BCF)	
	(kg <sub>soil</sub> /kg <sub>tissue</sub> )	Reference	(L/kg)	Reference
<i>Semivolatile organic compounds</i>				
Acenaphthene	$C_e = 1.47 \times C_s$	EPA 2007	3.89E+02	KDEP
Acenaphthylene	$C_e = 22.9 \times C_s$	EPA 2007	2.71E+02	RAIS 2010
Anthracene	$C_e = 2.42 \times C_s$	EPA 2007	1.68E+04	KDEP
Benzo(a)anthracene	$C_e = 1.59 \times C_s$	EPA 2007	3.57E+04	KDEP
Benzo(a)pyrene	$C_e = 1.33 \times C_s$	EPA 2007	5.00E+02	EPA 1999
Benzo(b)fluoranthene	$C_e = 2.60 \times C_s$	EPA 2007	3.02E+04	RAIS 2010
Benzo(g,h,i)perylene	$C_e = 2.94 \times C_s$	EPA 2007	1.10E+04	RAIS 2010
Benzo(k)fluoranthene	$C_e = 2.60 \times C_s$	EPA 2007	4.99E+03	RAIS 2010
Bis(2-ethylhexyl)phthalate	1.31E+03	EPA 1999	7.00E+01	EPA 1999
Butylbenzylphthalate	5.00E-02	DOE 1994	1.63E+01	RAIS 2010
Carbazole	5.00E-02	DOE 1994	1.70E+02	RAIS 2010
Chrysene	$C_e = 2.29 \times C_s$	EPA 2007	3.17E+03	EPA 1999
Dibenzo(a,h)anthracene	$C_e = 2.31 \times C_s$	EPA 2007	9.60E+03	EPA 1999
Dibenzofuran	5.00E-02	DOE 1994	1.52E+03	RAIS 2010
3,3'-Dichlorobenzidine	—	—	6.10E+02	KDEP
Diethylphthalate	5.00E-02	DOE 1994	1.84E+01	RAIS 2010
Di-n-butylphthalate	5.00E-02	DOE 1994	5.10E+03	DOE 1994
Di-n-octylphthalate	3.13E+06	EPA 1999	9.40E+03	EPA 1999
Fluoranthene	$C_e = 3.04 \times C_s$	EPA 2007	1.74E+04	KDEP
Fluorene	$C_e = 9.57 \times C_s$	EPA 2007	5.25E+02	RAIS 2010
Indeno(1,2,3-cd)pyrene	$C_e = 2.86 \times C_s$	EPA 2007	1.22E+04	RAIS 2010
2-Methylnaphthalene	5.00E-02	DOE 1994	7.47E+01	RAIS 2010
4-Chloro-3-methylphenol	2.00E-02	DOE 1994	1.10E+02	DOE 1994
4-Methylphenol	5.00E-02	DOE 1994	1.30E+01	DOE 1994
Naphthalene	$C_e = 4.40 \times C_s$	EPA 2007	8.45E+01	RAIS 2010
2-Nitrophenol	5.00E-02	DOE 1994	2.19E+01	RAIS 2010
4-Nitrophenol	5.00E-02	DOE 1994	5.14E+00	RAIS 2010
N-Nitrosodiphenylamine	5.00E-02	DOE 1994	2.13E+01	RAIS 2010
Octachlorostyrene	—	—	3.30E+02	KDEP
Pentachlorophenol	$C_e = 14.63 \times C_s$	EPA 2007	1.05E+03	KDEP
Phenanthrene	$C_e = 1.72 \times C_s$	EPA 2007	1.12E+04	KDEP
Phenol	5.00E-02	DOE 1994	1.74E+01	RAIS 2010
Pyrene	$C_e = 1.75 \times C_s$	EPA 2007	1.51E+03	RAIS 2010
<i>Polycyclic aromatic hydrocarbons (PAHs)</i>				
Total Low Molecular Weight PAHs	$C_e = 3.04 \times C_s$	EPA 2007	—	—
Total High Molecular Weight PAHs	$C_e = 2.6 \times C_s$	EPA 2007	—	—
<i>Pesticides and polychlorinated biphenyls (PCBs)</i>				
Aldrin	5.60E-01	DOE 1994	5.50E+03	RAIS 2010
Aroclor-1254	1.13E+00	EPA 1999	2.30E+05	EPA 1999
Aroclor-1260	5.80E+00	DOE 1994	1.23E+04	RAIS 2010
Total PCBs	2.80E+02	KDEP	2.53E+04	RAIS 2010
alpha-BHC	2.60E+00	DOE 1994	7.10E+02	DOE 1994
beta-BHC	2.60E+00	DOE 1994	7.20E+02	DOE 1994
delta-BHC	2.60E+00	DOE 1994	6.90E+02	DOE 1994
gamma-BHC (Lindane)	2.00E-02	DOE 1994	1.00E+03	DOE 1994
alpha-Chlordane	1.60E+00	DOE 1994	2.68E+04	RAIS 2010
gamma-Chlordane	1.60E+00	DOE 1994	2.68E+04	RAIS 2010

**Table C.1. Example Soil-to-Invertebrate and Water-to-Fish Bioaccumulation Factors (Continued)**

Analyte	Soil-to-Invertebrate Animal (BAF <sub>i</sub> )		Water-to-Fish Bioconcentration Factors (BCF)	
	(kg <sub>soil</sub> /kg <sub>tissue</sub> )	Reference	(L/kg)	Reference
4,4'-DDD	$\ln(C_e) = 0.6975 \times \ln(C_s) + 1.1613$	EPA 2007	5.65E+05	KDEP
4,4'-DDE	$\ln(C_e) = 0.8804 \times \ln(C_s) + 2.4771$	EPA 2007	1.81E+05	KDEP
4,4'-DDT	$\ln(C_e) = 0.8689 \times \ln(C_s) + 2.1247$	EPA 2007	5.88E+04	KDEP
Total 4,4'-DDT	$C_e = 11.2 \times C_s$	EPA 2007	—	—
Dieldrin	$C_e = 14.7 \times C_s$	EPA 2007	6.76E+04	KDEP
Endrin	1.90E+00	DOE 1994	1.30E+04	KDEP
Endrin aldehyde	1.90E+00	DOE 1994	6.87E+02	RAIS 2010
Endrin ketone	1.90E+00	DOE 1994	9.06E+02	RAIS 2010
Heptachlor	1.40E+00	EPA 1999	2.18E+19	KDEP
Heptachlor epoxide	1.00E+00	DOE 1994	2.18E+19	KDEP
Methoxychlor	5.70E-01	DOE 1994	3.15E+02	RAIS 2010
Mirex	3.00E+01	KDEP	1.80E+04	KDEP
Toxaphene	9.00E-01	KDEP	7.60E+04	KDEP
<b>Dioxins and furans</b>				
1,2,3,4,6,7,8-Heptachlorodibenzo-p-dioxin	8.10E-02	EPA 1999	2.16E+02	EPA 1993
1,2,3,4,6,7,8-Heptachlorodibenzofuran	1.70E-02	EPA 1999	4.66E+01	EPA 1993
1,2,3,4,7,8,9-Heptachlorodibenzofuran	6.20E-01	EPA 1999	1.65E+03	EPA 1993
1,2,3,6,7,8-Hexachlorodibenzo-p-dioxin	1.90E-01	EPA 1999	5.08E+02	EPA 1993
1,2,3,6,7,8-Hexachlorodibenzofuran	3.00E-01	EPA 1999	8.05E+02	EPA 1993
1,2,3,7,8,9-Hexachlorodibenzofuran	1.00E+00	EPA 1999	2.67E+03	EPA 1993
1,2,3,4,7,8-Hexachlorodibenzo-p-dioxin	4.90E-01	EPA 1999	1.31E+03	EPA 1993
1,2,3,7,8,9-Hexachlorodibenzo-p-dioxin	2.20E-01	EPA 1999	5.93E+02	EPA 1993
1,2,3,4,7,8-Hexachlorodibenzofuran	1.21E-01	EPA 1999	—	—
2,3,4,6,7,8-Hexachlorodibenzofuran	1.07E+00	EPA 1999	2.84E+03	EPA 1993
2,3,4,7,8-Pentachlorodibenzofuran	2.54E+00	EPA 1999	6.78E+03	EPA 1993
Octachlorodibenzo-p-dioxin	1.90E-02	EPA 1999	5.08E+01	EPA 1993
Octachlorodibenzofuran	2.50E-02	EPA 1999	6.78E+01	EPA 1993
1,2,3,7,8-Pentachlorodibenzo-p-dioxin	1.46E+00	EPA 1999	6.17E+04	KDEP
1,2,3,7,8-Pentachlorodibenzofuran	3.20E-01	EPA 1999	9.32E+02	EPA 1993
2,3,7,8-Tetrachlorodibenzo-p-dioxin	4.21E+01	KDEP	4.24E+03	EPA 1993
2,3,7,8-Tetrachlorodibenzofuran	1.27E+00	EPA 1999	3.39E+03	EPA 1993
Dioxins, total equivalent	1.59E+00	EPA 1999	—	—
<b>Explosives</b>				
1,3-Dinitrobenzene	1.19E+00	EPA 1999	7.40E+01	EPA 1999
2,4-Dinitrotoluene	3.08E+00	EPA 1999	9.15E+00	RAIS 2010
2,6-Dinitrotoluene	2.50E+00	EPA 1999	2.20E+01	RAIS 2010
Nitrobenzene	2.26E+00	EPA 1999	2.10E+01	EPA 1999

DOE (U.S. Department of Energy) 1994. *Loring Air Force Base Risk Assessment Methodology*, Hazardous Waste Remedial Actions Program, Martin Marietta Energy Systems, Oak Ridge, TN, August, Final.

EPA (U.S. Environmental Protection Agency) 1993. *Wildlife Exposure Factors Handbook*, Vol. 1, EPA/600/R-93/187a, Office of Research and Development, Washington, DC, December

EPA 1999. *Screening Level Ecological Risk Assessment Protocol*, EPA530-D-99-001A, Multimedia Planning and Permitting Division, Center for Combustion Science and Engineering, USEPA Region 6 and Office of Solid Waste, Washington, DC, Draft, August.

EPA 2007. *Guidance for Developing Ecological Soil Screening Levels (Eco-SSLs)*, Attachment 4-1 *Exposure Factors and Bioaccumulation Models for Derivation of Wildlife Eco-SSLs*. OSWER Directive 9285.7-55, Office of Solid Waste and Emergency Response, Washington, DC, April.

EPA 2014. E-mail from Brett Thomas, EPA Region 4 Ecological Risk Assessor, to LeAnne Garner, May 29.

RAIS value downloaded February 2010 from Risk Assessment Information System on-line database. Value is modeled using EPI BCFBAF software

RAIS-R value downloaded February 2010 from Risk Assessment Information System on-line database. Value is modeled using RESRAD software

— = no value

C<sub>s</sub> = Concentration in soil (mg/kg)      C<sub>e</sub> = Concentration in earthworm (mg/kg dry weight)

**APPENDIX D**

**EXAMPLES OF EPA STREAMLINED RISK SUMMARY TABLES**

**THIS PAGE INTENTIONALLY LEFT BLANK**

The tables in this appendix present examples of the preferred format for presentation of the COCs, pathways of concern, and toxicity endpoints; they are taken from EPA 1999, *A Guide to Preparing Superfund Proposed Plans, Records of Decision, and Other Remedy Selection Documents*, EPA 540-R-98-031, Washington, DC, July. These tables should be tailored for use in a PGDP Screening Ecological Risk Assessment (SERA).

It should be noted that for the exposure routes to the different media, the route of exposure to contaminants in these media would not only be via ingestion of the contaminated media itself, but also ingestion of prey items that had been contaminated by contact with these media.

Example Table D.1. Occurrence, Distribution, and Selection of Chemicals of Concern

Exposure Medium: Sediment									
Chemical of Potential Concern	Minimum Conc. <sup>a</sup> (ppm)	Maximum Conc. <sup>a</sup> (ppm)	Mean Conc. (ppm)	95% UCL of the Mean <sup>b</sup> (ppm)	Background Conc. (ppm)	Screening Toxicity Value (ppm)	Screening Toxicity Value Source	HQ Value <sup>c</sup>	COC Flag (Y or N)
Aluminum	2,419	12,800	9,808	10,400	3,010	NA	NA	NA	Y
Arsenic	3	69	12	21	3	6	Ont LEL	11.5	Y
Dieldrin	0.01	0.01	0.01	0.01	NA	0.052	EPA SQC	0.19	N
Lead	29	82	50	56	28	47	NOAA ER-L	1.75	Y
Methoxychlor	0.01	0.01	0.01	0.01	NA	0.019	EPA SQB	0.53	N

<sup>a</sup> Minimum/maximum detected concentration above the sample quantitation limit (SQL).

<sup>b</sup> The 95% upper confidence limit (UCL) represents the reasonable maximum exposure concentration.

<sup>c</sup> Hazard quotient (HQ) is defined as maximum concentration/screening toxicity value.

COC = contaminant of concern

Conc. = concentration

NA = not applicable

NOAA ER-L = National Oceanic and Atmospheric Administration effects range-low

Ont LEL = Ontario lowest effects level; *Guidelines for the Protection and Management of Aquatic Sediment Quality in Ontario*; D. Persuad, R. Jaagumagi, and A. Hayton; Ontario Ministry of the Environment, Ontario, August 1993.

SQB = sediment quality benchmark

SQC = sediment quality criteria

Example Table D.2. Ecological Exposure Pathways of Concern

Exposure Medium	Sensitive Environment Flag (Y or N)	Receptor <sup>a</sup>	Endangered/Threatened Species Flag (Y or N)	Exposure Routes	Assessment Endpoints	Measurement Endpoints
Sediment	N	Benthic organisms	N	Ingestion, respiration, and direct contact with chemicals in sediment	Benthic invertebrate community species diversity and abundance	<ul style="list-style-type: none"> <li>• Toxicity of soil to <i>Hyallela</i></li> <li>• Species diversity index</li> </ul>
Surface water	N	Fish	N	Ingestion, respiration, and direct contact with chemicals in surface water	Maintenance of an abundant and productive game fish population	<ul style="list-style-type: none"> <li>• Toxicity of surface water to <i>Pimephales promelas</i></li> <li>• Species diversity index</li> </ul>
Soil	N	Terrestrial invertebrates	N	Ingestion and direct contact with chemicals in wetland soils	Survival of terrestrial invertebrate community	<ul style="list-style-type: none"> <li>• Toxicity of sediment to <i>Lumbricus terrestris</i></li> </ul>
		Terrestrial plants	Y	Uptake of chemicals via root systems	Maintenance/enhancement of native wetland vegetation	<ul style="list-style-type: none"> <li>• Species diversity index</li> <li>• Survival of seedlings</li> </ul>
Surface water (vernal pools)	Y	Aquatic invertebrates	N	Ingestion, respiration, and direct contact with chemicals in surface water	Maintenance of a balanced, indigenous aquatic invertebrate community	<ul style="list-style-type: none"> <li>• Species diversity index</li> </ul>

<sup>a</sup> Receptors representing reptiles and amphibians are not included in this table due to the lack of risk assessment parameters for these receptors. Until values for these parameters are available, it is assumed that assessments protecting other receptors are also protective of reptiles and amphibians.

Example Table D.3. COC Concentrations Expected to Provide Adequate Protection of Ecological Receptors

Habitat Type/Name	Exposure Medium	COC	Protective Level <sup>a</sup>	Units	Basis <sup>b</sup>	Assessment Endpoint
Small freshwater stream/West Branch Maple Creek	Sediment	Arsenic	6	mg/kg	Site-specific LOAEL	Benthic invertebrate community species diversity and abundance
		Lead	15	mg/kg	Significant difference in benthic diversity index between the site and the reference site	
		Total PCBs	0.03–0.05	mg/kg	LOAEL and NOAEL	
	Surface water	Aluminum	123	µg/L	NOAEL	Maintenance of an abundant and productive game fish population
		Arsenic	208	µg/L	Mean of values between LOAEL and NOAEL	
		Total PCBs	0.1	µg/L	Bioaccumulation factor modeling	

<sup>a</sup> A range of levels may be provided.

<sup>b</sup> Provide basis of selection: (1) mean of values between lowest observed adverse effect level (LOAEL) and no observed adverse effect level (NOAEL), (2) bioaccumulation factor model, (3) LOAEL and NOAEL, (4) significant difference in benthic diversity index between site and reference site.

COC = contaminant of concern  
 PCB = polychlorinated biphenyl



**THIS PAGE INTENTIONALLY LEFT BLANK**

**APPENDIX E**

**CHECKLIST FOR ECOLOGICAL ASSESSMENT/SAMPLING**

**THIS PAGE INTENTIONALLY LEFT BLANK**

# Checklist for Ecological Assessment/Sampling

## I. SITE DESCRIPTION

1. Site Name: \_\_\_\_\_

Location: \_\_\_\_\_

\_\_\_\_\_

County: \_\_\_\_\_ City: \_\_\_\_\_ State: \_\_\_\_\_

2. Latitude: \_\_\_\_\_ Longitude: \_\_\_\_\_

3. What is the approximate area of the site? \_\_\_\_\_

4. Is this the first site visit?  yes  no If no, attach trip report of previous site visit(s), if available.

Date(s) of previous site visit(s): \_\_\_\_\_.

5. Please attach to the checklist USGS topographic map(s) of the site, if available.

6. Are aerial or other site photographs available?  yes  no If yes, please attach any available photo(s) to the site map at the conclusion of this section.

7. The land use on the site is:

\_\_\_\_ % Urban

\_\_\_\_ % Rural

\_\_\_\_ % Residential

\_\_\_\_ % Industrial ( light  heavy)

\_\_\_\_ % Agricultural

(Crops: \_\_\_\_\_)

\_\_\_\_ % Recreational

(Describe; note if it is a park, etc.)

\_\_\_\_\_  
\_\_\_\_\_

\_\_\_\_ % Undisturbed

\_\_\_\_ % Other

The area surrounding the site is:

\_\_\_\_\_ mile radius

\_\_\_\_ % Urban

\_\_\_\_ % Rural

\_\_\_\_ % Residential

\_\_\_\_ % Industrial ( light  heavy)

\_\_\_\_ % Agricultural

(Crops: \_\_\_\_\_)

\_\_\_\_ % Recreational

(Describe; note if it is a park, etc.)

\_\_\_\_\_  
\_\_\_\_\_

\_\_\_\_ % Undisturbed

\_\_\_\_ % Other

8. Has any movement of soil taken place at the site?  yes  no. If yes, please identify the most likely cause of this disturbance:

\_\_\_\_ Agricultural Use

\_\_\_\_ Heavy Equipment

\_\_\_\_ Mining

\_\_\_\_ Natural Events

\_\_\_\_ Erosion

\_\_\_\_ Other

Please describe:

9. Do any potentially sensitive environmental areas exist adjacent to or in proximity to the site, e.g., Federal and State parks, National and State monuments, wetlands, prairie potholes? *Remember, flood plains and wetlands are not always obvious; do not answer "no" without confirming information.*

Please provide the source(s) of information used to identify these sensitive areas, and indicate their general location on the site map.

10. What type of facility is located at the site?

Chemical       Manufacturing  Mixing       Waste disposal

Other (specify) \_\_\_\_\_

11. What are the suspected contaminants of concern at the site? If known, what are the maximum concentration levels?

12. Check any potential routes of off-site migration of contaminants observed at the site:

Swales       Depressions       Drainage ditches

Runoff       Windblown particulates  Vehicular traffic

Other (specify) \_\_\_\_\_

13. If known, what is the approximate depth to the water table? \_\_\_\_\_

14. Is the direction of surface runoff apparent from site observations?  yes  no If yes, to which of the following does the surface runoff discharge? Indicate all that apply.

Surface water       Groundwater       Sewer       Collection impoundment

15. Is there a navigable waterbody or tributary to a navigable waterbody?       yes  no

16. Is there a waterbody anywhere on or in the vicinity of the site? If yes, also complete Section III: Aquatic Habitat Checklist -- Non-Flowing Systems and/or Section IV: Aquatic Habitat Checklist -- Flowing Systems.

yes (approx. distance \_\_\_\_\_)       no

17. Is there evidence of flooding?  yes  no *Wetlands and flood plains are not always obvious; do not answer "no" without confirming information.* If yes, complete Section V: Wetland Habitat Checklist.

18. If a field guide was used to aid any of the identifications, please provide a reference. Also, estimate the time spent identifying fauna. [Use a blank sheet if additional space is needed for text.]

19. Are any threatened and/or endangered species (plant or animal) known to inhabit the area of the site?  yes  no *If yes, you are required to verify this information with the U.S. Fish and Wildlife Service.* If species' identities are known, please list them next.

20. Record weather conditions at the time this checklist was prepared:

DATE: \_\_\_\_\_

\_\_\_\_\_ Temperature (°C/°F)

\_\_\_\_\_ Normal daily high temperature

\_\_\_\_\_ Wind (direction/speed)

\_\_\_\_\_ Precipitation (rain, snow)

\_\_\_\_\_ Cloud cover

**IA. SUMMARY OF OBSERVATIONS AND SITE SETTING**

Completed by \_\_\_\_\_ Affiliation \_\_\_\_\_

Additional Preparers \_\_\_\_\_

Site Manager \_\_\_\_\_

Date \_\_\_\_\_



## II. TERRESTRIAL HABITAT CHECKLIST

### IIA. WOODED

1. Are there any wooded areas at the site?  yes  no If no, go to Section IIB: Shrub/Scrub.
2. What percentage or area of the site is wooded? (\_\_\_\_% \_\_\_\_ acres). Indicate the wooded area on the site map which is attached to a copy of this checklist. Please identify what information was used to determine the wooded area of the site.
3. What is the dominant type of vegetation in the wooded area? (Circle one: Evergreen/Deciduous/ Mixed) Provide a photograph, if available.

Dominant plant, if known: \_\_\_\_\_

4. What is the predominant size of the trees at the site? Use diameter at breast height.  
 0-6 in.             6-12 in.             > 12 in.
5. Specify type of understory present, if known. Provide a photograph, if available.

### IIB. SHRUB/SCRUB

1. Is shrub/scrub vegetation present at the site?  yes  no If no, go to Section IIC: Open Field.
2. What percentage of the site is covered by scrub/shrub vegetation? (\_\_\_\_% \_\_\_\_ acres). Indicate the areas of shrub/scrub on the site map. Please identify what information was used to determine this area.
3. What is the dominant type of scrub/shrub vegetation, if known? Provide a photograph, if available.
4. What is the approximate average height of the scrub/shrub vegetation?  
 0-2 ft.             2-5 ft.             > 5 ft.

5. Based on site observations, how dense is the scrub/shrub vegetation?

- Dense                       Patchy                       Sparse

**III. OPEN FIELD**

1. Are there open (bare, barren) field areas present at the site?  yes  no If yes, please indicate the type below:

- Prairie/plains                       Savannah                       Old field                       Other (specify)\_\_\_\_\_

2. What percentage of the site is open field? ( \_\_\_\_\_% \_\_\_\_\_ acres). Indicate the open fields on the site map.

3. What is/are the dominant plant(s)? Provide a photograph, if available.

4. What is the approximate average height of the dominant plant? \_\_\_\_\_

5. Describe the vegetation cover:  Dense                       Sparse                       Patchy

**IID. MISCELLANEOUS**

1. Are other types of terrestrial habitats present at the site, other than woods, scrub/shrub, and open field?  yes  no  
If yes, identify and describe them below.

2. Describe the terrestrial miscellaneous habitat(s) and identify these area(s) on the site map.

3. What observations, if any, were made at the site regarding the presence and/or absence of insects, fish, birds, mammals, etc.?
  
  
  
  
  
  
  
  
  
  
4. Review the questions in Section I to determine if any additional habitat checklists should be completed for this site.

### III. AQUATIC HABITAT CHECKLIST -- NON-FLOWING SYSTEMS

*Note: Aquatic systems are often associated with wetland habitats. Please refer to Section V, Wetland Habitat Checklist.*

1. What type of open-water, non-flowing system is present at the site?

- Natural (pond, lake)
- Artificially created (lagoon, reservoir, canal, impoundment)

2. If known, what is the name(s) of the waterbody(ies) on or adjacent to the site?

\_\_\_\_\_

3. If a waterbody is present, what are its known uses (e.g.: recreation, navigation, etc.)?

4. What is the approximate size of the waterbody(ies)? \_\_\_\_\_ acre(s).

5. Is any aquatic vegetation present?  yes  no If yes, please identify the type of vegetation present if known.

- Emergent
- Submergent
- Floating

6. If known, what is the depth of the water? \_\_\_\_\_

7. What is the general composition of the substrate? Check all that apply.

- Bedrock
- Sand (coarse)
- Muck (fine/black)
- Boulder (>10 in.)
- Silt (fine)
- Debris
- Cobble (2.5-10 in.)
- Marl (shells)
- Detritus
- Gravel (0.1-2.5 in.)
- Clay (slick)
- Concrete
- Other (specify) \_\_\_\_\_

8. What is the source of water in the waterbody?

- River/Stream/Creek
- Groundwater
- Other (specify) \_\_\_\_\_
- Industrial discharge
- Surface runoff

9. Is there a discharge from the site to the waterbody?  yes  no If yes, please describe this discharge and its path.

10. Is there a discharge from the waterbody?  yes  no If yes, and the information is available, identify from the list below the environment into which the waterbody discharges.

- |   |                                 |                                  |                |
|---|---------------------------------|----------------------------------|----------------|
| <input type="checkbox"/> River/Stream/Creek | <input type="checkbox"/> onsite | <input type="checkbox"/> offsite | Distance _____ |
| <input type="checkbox"/> Groundwater        | <input type="checkbox"/> onsite | <input type="checkbox"/> offsite |                |
| <input type="checkbox"/> Wetland            | <input type="checkbox"/> onsite | <input type="checkbox"/> offsite | Distance _____ |
| <input type="checkbox"/> Impoundment        | <input type="checkbox"/> onsite | <input type="checkbox"/> offsite |                |

11. Identify any field measurements and observations of water quality that were made. For those parameters for which data were collected provide the measurement and the units of measure below:

- \_\_\_\_\_ Area
- \_\_\_\_\_ Depth (average)
- \_\_\_\_\_ Temperature (depth of the water at which the reading was taken) \_\_\_\_\_
- \_\_\_\_\_ pH
- \_\_\_\_\_ Dissolved oxygen
- \_\_\_\_\_ Salinity
- \_\_\_\_\_ Turbidity (clear, slightly turbid, turbid, opaque) (Secchi disk depth \_\_\_\_\_ )
- \_\_\_\_\_ Other (specify)

12. Describe observed color and area of coloration.

13. Mark the open-water, non-flowing system on the site map attached to this checklist.

14. What observations, if any, were made at the waterbody regarding the presence and/or absence of benthic macroinvertebrates, fish, birds, mammals, etc.?

#### IV. AQUATIC HABITAT CHECKLIST -- FLOWING SYSTEMS

*Note: Aquatic systems are often associated with wetland habitats. Please refer to Section V, Wetland Habitat Checklist.*

1. What type(s) of flowing water system(s) is (are) present at the site?

- |   |  |                                     |
|---|--|-------------------------------------|
| <input type="checkbox"/> River                                    | <input type="checkbox"/> Stream                | <input type="checkbox"/> Creek      |
| <input type="checkbox"/> Dry wash                                 | <input type="checkbox"/> Arroyo                | <input type="checkbox"/> Brook      |
| <input type="checkbox"/> Artificially<br>created<br>(ditch, etc.) | <input type="checkbox"/> Intermittent Stream   | <input type="checkbox"/> Channeling |
|   | <input type="checkbox"/> Other (specify) _____ |                                     |

2. If known, what is the name of the waterbody? \_\_\_\_\_

3. For natural systems, are there any indicators of physical alteration (e.g., channeling, debris, etc.)?  
 yes    no If yes, please describe indicators that were observed.

4. What is the general composition of the substrate? Check all that apply.

- |  |  |   |
|--|--|---|
| <input type="checkbox"/> Bedrock               | <input type="checkbox"/> Sand (coarse) | <input type="checkbox"/> Muck ( fine/black) |
| <input type="checkbox"/> Boulder (>10 in.)     | <input type="checkbox"/> Silt (fine)   | <input type="checkbox"/> Debris             |
| <input type="checkbox"/> Cobble (2.5-10 in.)   | <input type="checkbox"/> Marl (shells) | <input type="checkbox"/> Detritus           |
| <input type="checkbox"/> Gravel (0.1-2.5 in.)  | <input type="checkbox"/> Clay (slick)  | <input type="checkbox"/> Concrete           |
| <input type="checkbox"/> Other (specify) _____ |  |   |

5. What is the condition of the bank (e.g., height, slope, extent of vegetative cover)?

6. Is the system influenced by tides?  yes  no What information was used to make this determination?

7. Is the flow intermittent?  yes  no If yes, please note the information that was used in making this determination.

8. Is there a discharge from the site to the waterbody?  yes  no If yes, please describe the discharge and its path.

9. Is there a discharge from the waterbody?  yes  no If yes, and the information is available, please identify what the waterbody discharges to and whether the discharge is on site or off site.

10. Identify any field measurements and observations of water quality that were made. For those parameters for which data were collected, provide the measurement and the units of measure in the appropriate space below:

- \_\_\_\_\_ Width (ft.)
- \_\_\_\_\_ Depth (ft.)
- \_\_\_\_\_ Velocity (specify units): \_\_\_\_\_
- \_\_\_\_\_ Temperature (depth of the water at which the reading was taken \_\_\_\_\_)
- \_\_\_\_\_ pH
- \_\_\_\_\_ Dissolved oxygen
- \_\_\_\_\_ Salinity
- \_\_\_\_\_ Turbidity (clear, slightly turbid, turbid, opaque)  
(Secchi disk depth \_\_\_\_\_)
- \_\_\_\_\_ Other (specify) \_\_\_\_\_



11. Describe observed color and area of coloration.

12. Is any aquatic vegetation present?  yes  no If yes, please identify the type of vegetation present, if known.

Emergent

Submergent

Floating

13. Mark the flowing water system on the attached site map.

14. What observations were made at the waterbody regarding the presence and/or absence of benthic macroinvertebrates, fish, birds, mammals, etc.?

**V. WETLAND HABITAT CHECKLIST**

1. Based on observations and/or available information, are designated or known wetlands definitely present at the site?  
 yes  no

Please note the sources of observations and information used (e.g., USGS Topographic Maps, National Wetland Inventory, Federal or State Agency, etc.) to make this determination.

2. Based on the location of the site (e.g., along a waterbody, in a floodplain) and site conditions (e.g., standing water; dark, wet soils; mud cracks; debris line; water marks), are wetland habitats suspected?  
 yes  no If yes, proceed with the remainder of the wetland habitat identification checklist.

3. What type(s) of vegetation are present in the wetland?

Submergent  Emergent  
 Scrub/Shrub  Wooded

Other (specify) \_\_\_\_\_

4. Provide a general description of the vegetation present in and around the wetland (height, color, etc.). Provide a photograph of the known or suspected wetlands, if available.

5. Is standing water present?  yes  no If yes, is this water:  Fresh  Brackish

What is the approximate area of the water (sq. ft.)? \_\_\_\_\_

Please complete questions 4, 11, 12 in Checklist III - Aquatic Habitat -- Non-Flowing Systems.

6. Is there evidence of flooding at the site? What observations were noted?

Buttressing  Water marks  Mud cracks

Debris line  Other (describe below)

7. If known, what is the source of the water in the wetland?

- Stream/River/Creek/Lake/Pond                       Groundwater  
 Flooding     Surface Runoff

8. Is there a discharge from the site to a known or suspected wetland?  yes  no If yes, please describe.

9. Is there a discharge from the wetland?  yes  no. If yes, to what waterbody is discharge released?

- Surface Stream/River               Groundwater    Lake/Pond                       Marine

10. If a soil sample was collected, describe the appearance of the soil in the wetland area. Circle or write in the best response.

Color (blue/gray, brown, black, mottled) \_\_\_\_\_

Water content (dry, wet, saturated/unsaturated) \_\_\_\_\_

11. Mark the observed wetland area(s) on the attached site map.

**APPENDIX F**

**KENTUCKY ECOLOGICAL SCREENING VALUES**

**THIS PAGE INTENTIONALLY LEFT BLANK**

## KY Ecological Screening Values

CAS No.		Soil (mg/kg)		Sediment (mg/kg)		Water (µg/L)	
67-64-1	Acetone	2.50E+00	v	4.53E-01	v	1.50E+03	sut
75-05-8	Acetonitrile					7.60E+01	kdep
260-94-6	Acridine					4.40E+00	can
107-02-8	Acrolein					2.10E+00	iv
107-13-1	Acrylonitrile	1.00E+03	iv			7.55E+01	iv
116-06-3	Aldicarb					1.00E+00	can
309-00-2	Aldrin	2.50E-03	iv	2.00E-03	v	3.00E-01	iv
7429-90-5	Aluminum	5.00E+01	iv	2.50E+04	pad	8.70E+01	iv
n/a	Aminodinitrotoluenes					2.00E+01	tal
7664-41-7	Ammonia	pH & temperature dependent				1.70E+00	kdep
62-53-3	Aniline	2.00E+01				2.20E+00	can
7440-36-0	Antimony and compounds	3.50E+00	iv	2.00E+00	eff	1.60E+02	iv
7440-38-2	Arsenic III					4.00E+01	birge
7440-38-2	Arsenic V					3.10E+00	sut
7440-38-2	Arsenic (total)	1.00E+01	iv	5.90E+00	can	5.00E+00	can
1912-24-9	Atrazine	5.00E-05	iv			1.80E+00	can
7440-39-3	Barium and compounds	1.65E+02	iv			3.90E+00	etox
71-43-2	Benzene	5.00E-02	iv	5.70E-02	etox	5.30E+01	iv
92-87-5	Benzidine			1.70E-03	kdep	3.90E+00	sut
65-85-0	Benzoic acid	6.50E+02	kdep	6.50E-01	iii	4.20E+01	sut
100-51-6	Benzyl alcohol	5.70E+00	kdep	1.10E-03	kdep	8.60E+00	sut
7440-41-7	Beryllium and compounds	1.10E+00	iv			5.30E-01	iv
92-52-4	1,1-Biphenyl	6.00E+01	iv	1.10E+00	kdep	1.40E+01	kdep
111-44-4	Bis(2-chloroethyl)ether	2.37E+01	v	2.12E-01	v	2.38E+03	iv
111-91-1	Bis(2-chloroethoxy)methane					1.10E+04	iv
117-81-7	Bis(2-ethylhexyl)phthalate (DEHP)	9.26E-01	v	1.82E-01	iv	3.00E-01	iv
7440-42-8	Boron	5.00E-01	iv			7.50E+02	iv
314-40-9	Bromacil					5.00E+00	can
7726-95-6	Bromine	1.00E+01	iv				
108-86-1	Bromobenzene	1.00E-01	iv				
74-97-5	Bromochloromethane	1.00E-01	iv			1.10E+04	iii
75-27-4	Bromodichloromethane	1.00E-01	iv	1.13E-03	v	1.10E+04	iii
75-25-2	Bromoform (tribromomethane)	1.59E+01	v	9.96E-01	v	2.93E+02	iv
74-83-9	Bromomethane (methyl bromide)					1.10E+02	iv
101-55-3	4-Bromophenyl phenylether			1.55E+00	v	1.50E+00	v
1689-84-5	Bromoxynil					5.00E+00	can
85-68-7	Butyl benzyl phthalate	2.39E-01	v	4.19E+00	v	2.20E+01	iv
7440-43-9	Cadmium and compounds	1.40E+00	can	6.76E-01	eff	1.70E-02	can
133-06-2	Captan					1.30E+00	can
63-25-2	Carbaryl	5.00E-01	iv			2.00E-01	can
1563-66-2	Carbofuran	2.00E-01	iv			1.80E+00	can
75-15-0	Carbon disulfide	9.40E-02	v	1.34E-01	v	9.20E-01	sut
56-23-5	Carbon tetrachloride	1.00E+03	iv	3.57E-02	v	1.33E+01	can
57-74-9	Chlordane	1.00E-01	iv	5.00E-04	eff	4.30E-03	iv
16887-00-6	Chloride					2.30E+05	iv
7782-50-5	Chlorine					1.10E+01	iv
106-47-8	4-Chloroaniline	2.00E+01	iv	1.46E-01	v	5.00E+01	noaa
108-90-7	Chlorobenzene	5.00E-02	iv	6.19E-02	v	1.30E+00	can
75-00-3	Chloroethane	1.00E-01	iv	5.86E+01	v	2.30E+05	v
110-75-8	2-Chloroethyl vinyl ether					3.54E+03	iv
67-66-3	Chloroform	1.00E-03	iv	2.70E-02	v	1.80E+00	can
74-87-3	Chloromethane (methyl chloride)	1.00E-01	iv	7.85E-05	v	5.50E+03	iv
35421-08-0	4-Chloro-3-methylphenol					3.00E-01	iv
91-58-7	beta-Chloronaphthalene	1.00E+00	iv	4.17E-01	v	3.96E-01	v
95-57-8	2-Chlorophenol	1.00E-02	iv	1.17E-02	v	7.00E+00	can
108-43-0	3-Chlorophenol	7.00E+00	iv			7.00E+00	can
7005-72-3	4-Chlorophenyl phenylether			6.56E-01	v		
1897-45-6	Chlorothalonil					1.80E-01	can

## KY Ecological Screening Values

CAS No.		Soil (mg/kg)		Sediment (mg/kg)		Water (µg/L)	
95-49-8	o-Chlorotoluene	1.00E-01	iv				
2921-88-2	Chlorpyrifos	1.00E-01	iv			3.50E-03	can
n/a	Total Chromium (1/6 ratio Cr VI/Cr III)	4.00E-01	iv	3.73E+01	can	1.80E+02	kdep
16065-83-1	Chromium III					8.90E+00	can
7440-47-3	Chromium VI	4.00E-01	can			1.00E+00	can
7440-48-4	Cobalt	2.00E+01	iv	5.00E+01	v	3.00E+00	etox
7440-50-8	Copper and compounds	4.00E+01	iv	1.87E+01	iv	5.16E+00	wwq
21725-46-2	Cyanazine					2.00E+00	can
n/a	Cyanides (total)	9.00E-01	can				
57-12-5	Free cyanide	9.00E-01	iv			5.20E+00	iv
110-82-7	Cyclohexane	1.00E-01	iv				
108-94-1	Cyclohexanone	1.00E-01	iv				
75-99-0	Dalapon	1.00E-01	iv				
72-54-8	DDD	2.50E-03	iv	1.22E-03	eff	6.40E-03	iv
72-55-9	DDE	2.50E-03	iv	1.42E-03	can	1.05E+01	iv
50-29-3	DDT	2.50E-03	iv	1.00E-03	eff	1.00E-03	iv
124-18-5	Decane					4.90E+01	sut
52918-63-5	Deltamethrin					4.00E-04	can
8065-48-3	Demeton	1.00E-01	iv			1.00E-01	iv
333-41-5	Diazinon	1.00E-01	iv	1.90E-03	etox	4.30E-02	etox
132-64-9	Dibenzofuran			1.52E+00	v	2.00E+01	noaa
124-48-1	Dibromochloromethane	1.00E-01	iv	2.68E-01	v	6.40E+03	v
96-12-8	1,2-Dibromo-3-chloropropane	1.00E-01	iv	2.00E-02	v	1.12E+02	v
106-93-4	1,2-Dibromoethane	1.23E+00	v	1.24E-02	v	2.25E+01	v
84-74-2	Dibutyl phthalate	2.00E+02	iv	1.11E-01	v	9.40E+00	iv
1918-00-9	Dicamba	1.00E-01	iv			1.00E+01	can
95-50-1	1,2-Dichlorobenzene	1.00E-02	iv	5.00E-02	barr	7.00E-01	can
541-73-1	1,3-Dichlorobenzene	1.00E-02	iv	1.70E-01	barr	5.02E+01	iv
106-46-7	1,4-Dichlorobenzene	1.00E-02	iv	1.20E-02	barr	1.12E+01	iv
91-94-1	3,3-Dichlorobenzidine	6.46E-01	v	2.82E-02	v	9.98E+01	v
764-41-0	1,4-Dichloro-2-butene	1.00E+03	iv				
75-71-8	Dichlorodifluoromethane	1.00E-01	iv	1.33E-03	v	1.10E+04	iii
75-34-3	1,1-Dichloroethane	1.00E-01	iv	5.75E-04	v	4.70E+01	etox
107-06-2	1,2-Dichloroethane (EDC)	4.00E-01	iv	5.42E-02	v	1.00E+02	can
75-35-4	1,1-Dichloroethylene	1.00E-01	iv	2.33E-02	v	3.03E+02	iv
156-59-2	1,2-Dichloroethylene (cis)	1.00E-01	iv	2.09E-01	v	1.16E+04	iii
156-60-5	1,2-Dichloroethylene (trans)	1.00E-01	iv	2.09E-01	v	1.35E+03	iv
540-59-0	1,2-Dichloroethylene (mixture)	1.00E-01	iv	2.09E-01	v	3.10E+02	v
120-83-2	2,4-Dichlorophenol	2.00E+01	iv	1.34E-01	v	3.65E+01	iv
n/a	Dichlorophenols (total)	3.00E-03	iv			2.00E-01	can
94-75-7	2,4-Dichlorophenoxyacetic Acid (2,4-D)	1.00E-01	iv			4.00E+00	can
94-82-6	4-(2,4-Dichlorophenoxy)butyric Acid (2,4-DB)	1.00E-01	iv			4.00E+00	can
78-87-5	1,2-Dichloropropane	7.00E+02	iv	3.52E-01	v	5.25E+02	iv
542-75-6	1,3-Dichloropropene	1.00E-01	iv	2.96E-03	v	2.44E+01	iv
62-73-7	Dichlorvos	1.00E-01	iv				
51338-27-3	Diclofop-methyl					6.10E+00	can
60-57-1	Dieldrin	5.00E-04	iv	2.00E-05	eff	1.90E-03	iv
84-66-2	Diethyl phthalate	1.00E+02	iv	8.04E-03	v	5.21E+02	iv
60-51-5	Dimethoate	1.00E-01	iv	1.90E-01	v	6.20E+00	can
105-67-9	2,4-Dimethylphenol	1.00E-02	v	3.05E-01	v	2.12E+01	iv
131-11-3	Dimethyl phthalate	2.00E+02	iv	2.50E-02	v	3.30E+02	iv
99-65-0	1,3-Dinitrobenzene	6.55E-01	v	6.70E-03	tal	2.00E+01	tal
534-52-1	4,6-Dinitro-2-methylphenol (Dinitro-o-cresol)					2.30E+00	iv
51-28-5	2,4-Dinitrophenol	2.00E+01	iv	1.33E-03	v	6.20E+00	iv
121-14-2	2,4-Dinitrotoluene	1.28E+00	v	7.51E-02	v	3.10E+02	iv
606-20-2	2,6-Dinitrotoluene	3.28E-02	v	2.06E-02	v	4.20E+01	v
88-85-7	Dinoseb	1.00E-01	iv	1.18E-02	v	5.00E-02	can
117-84-0	di-n-Octyl phthalate	7.09E+02	v	4.06E+01	v	3.00E+01	v

## KY Ecological Screening Values

CAS No.		Soil (mg/kg)		Sediment (mg/kg)		Water (µg/L)	
122-66-7	1,2-Diphenylhydrazine					2.70E+00	iv
298-04-4	Disulfoton	1.00E-01	iv	3.24E-01	iv	4.02E-02	v
115-29-7	Endosulfan	3.58E-02	v	1.04E-04	v	5.60E-02	iv
72-20-8	Endrin	1.00E-03	iv	2.00E-05	eff	2.30E-03	iv
100-41-4	Ethylbenzene	5.00E-02	iv	3.60E+00	etox	9.00E+01	can
107-21-1	Ethylene glycol	9.70E+01	iv			1.92E+05	can
52-85-7	Famphur			1.78E-03	v		
50-00-0	Formaldehyde	6.40E+00	kdep			9.70E+03	kdep
110-00-9	Furan	6.00E+02	iv				
1071-83-6	Glyphosate					6.50E+01	can
86-50-0	Guthion					1.00E-02	iv
76-44-8	Heptachlor	1.00E-01	iv	6.00E-04	v	3.80E-03	iv
1024-57-3	Heptachlor epoxide	1.52E-01	v	6.00E-04	v	3.80E-03	iv
118-74-1	Hexachlorobenzene	2.50E-03	iv	2.00E-02	v	3.68E-03	noaa
87-68-3	Hexachlorobutadiene	3.98E-02	v	1.38E+00	v	9.30E-01	iv
319-84-6	alpha-Hexachlorocyclohexane (HCH)	2.50E-03	iv	6.00E-03	v	5.00E+02	iv
319-85-7	beta-Hexachlorocyclohexane (HCH)	1.00E-03	iv	5.00E-03	v	5.00E+03	iv
58-89-9	gamma-Hexachlorocyclohexane (Lindane)	5.00E-05	iv	3.20E-04	eff	1.00E-02	can
77-47-4	Hexachlorocyclopentadiene	1.00E+01	iv	9.01E-01	v	7.00E-02	iv
19408-74-3	Hexachlorodibenzo-p-dioxin mixture (HxCDD)	1.00E-01	iv	2.50E-05	iv	2.00E-05	iv
67-72-1	Hexachloroethane	5.96E-01	v	2.23E+00	v	9.80E+00	iv
110-54-3	n-Hexane					5.80E-01	sut
591-78-6	2-Hexanone	1.26E+01	v	1.01E+00	v	9.90E+01	sut
7783-06-4	Hydrogen sulfide					2.00E+00	iv
55406-53-6	3-Iodo-2-propynyl butyl carbamate (IPBC)					1.90E+00	can
7439-89-6	Iron	2.00E+02	iv	2.00E+02	kdep	1.00E+03	iv
78-59-1	Isophorone	1.39E+02	v	4.22E-01	v	1.17E+03	iv
7439-91-0	Lanthanum	5.00E+01	iv				
7439-92-1	Lead	5.00E+01	iv	1.20E+01	pad	1.32E+00	iv
330-55-2	Linuron					7.00E+00	can
7439-93-2	Lithium	2.00E+00	iv				
121-75-5	Malathion	1.00E-01	iv	6.70E-04	kdep	1.00E-01	iv
12427-38-2	Maneb	3.50E+00	iv				
7439-95-4	Magnesium	4.40E+05	iii				
7439-96-5	Manganese and compounds	1.00E+02	iv	6.14E+02	pad	8.00E+01	etox
7439-97-6	Mercuric chloride	1.00E-01	iv	1.30E-01	iv	1.20E-02	iv
22967-92-6	Mercury (methyl)	6.70E-01	iv	2.45E-05	v	3.00E-03	etox
150-50-5	Merphos	1.00E-01	iv				
72-43-5	Methoxychlor	1.99E-02	v	3.59E-03	v	3.00E-02	iv
94-74-6	2-Methyl-4-chlorophenoxyacetic acid (MCPA)	1.00E-01	iv			2.60E+00	can
93-65-2	2-(2-Methyl-4-chlorophenoxy)propionic acid (MCPA)	1.00E-01	iv			4.00E+00	can
74-95-3	Methylene bromide	1.23E+00	v	1.24E-02	v	2.25E+01	v
75-09-2	Methylene chloride	2.00E+00	iv	1.26E+00	v	9.81E+01	can
78-93-3	Methyl ethyl ketone (2-butanone)	8.96E+01	v	1.37E-01	v	7.10E+03	v
108-10-1	Methyl isobutyl ketone (4-methyl-2-pentanone)	4.43E+02	v	5.44E-01	v	3.68E+03	v
298-00-0	Methyl parathion	1.00E-01	iv	7.55E-04	v	1.30E-02	iv
95-48-7	2-Methylphenol	5.00E-01	iv	6.30E-02	iii	1.30E+01	sut
106-44-5	4-Methylphenol	5.00E-01	iv	6.70E-01	iii	4.89E+02	d
51218-45-2	Metolachlor					7.80E+00	can
21087-64-9	Metribuzin					1.00E+00	can
2385-85-5	Mirex					1.00E-03	iv
7439-98-7	Molybdenum	2.00E+00	iv			7.30E+01	can
300-76-5	Naled	1.00E-01	iv				
7440-02-0	Nickel (soluble salts)	3.00E+01	iv	1.59E+01	iv	2.90E+01	wwq
88-74-4	2-Nitroaniline	3.16E+00	v	2.00E-04	v		
99-09-2	3-Nitroaniline	2.19E+01	v	2.00E-04	v		
100-01-6	4-Nitroaniline	3.16E+00	v	2.00E-04	v		
98-95-3	Nitrobenzene	1.31E+00	v	4.88E-01	v	2.70E+02	iv



## KY Ecological Screening Values

CAS No.		Soil (mg/kg)		Sediment (mg/kg)		Water (µg/L)	
88-75-5	2-Nitrophenol					3.50E+03	iv
100-02-7	4-Nitrophenol	7.00E+00	iv	7.78E-03	v	8.28E+01	iv
86-30-6	N-Nitrosodiphenylamine	2.00E+01	iv	1.55E-01	v	5.85E+01	iv
2691-41-0	Octahydro-1357-tetranitro-1357- tetrazocine (HMX)			4.70E-03	tal	3.30E+02	tal
111-13-7	2-Octanone					8.30E+00	sut
56-38-2	Parathion	1.00E-01	iv	3.40E-04	v	1.30E-02	iv
608-93-5	Pentachlorobenzene	2.50E-03	iv			6.00E+00	can
87-86-5	Pentachlorophenol	2.00E-03	iv	6.90E-01	barr	5.00E-01	can
30899-19-5	Pentanol					1.10E+02	sut
108-95-2	Phenol	5.00E-02	iv	2.73E-02	v	4.00E+00	can
298-02-2	Phorate	1.00E-01	iv	8.61E-04	v	3.62E+00	v
n/a	Phthalate esters					3.00E+00	wwq
1918-02-1	Picloram					2.90E+01	can
1336-36-3	Polychlorinated biphenyls (PCBs)	2.00E-02	iv	2.16E-02	eff	1.40E-03	wwq
12674-11-2	Aroclor 1016	2.00E-02	iv	2.16E-02	eff	1.40E-03	wwq
11097-69-1	Aroclor 1254	2.00E-02	iv	2.16E-02	eff	1.40E-03	wwq
	Polynuclear aromatic hydrocarbons (PAHs) - total	1.00E+00	iv	1.68E+00	iv		
83-32-9	Acenaphthene	2.00E+01	iv	6.71E-03	can	5.80E+00	can
208-96-8	Acenaphthylene	6.82E+02	v	5.87E-03	can	4.84E+03	v
120-12-7	Anthracene	1.00E-01	iv	4.69E-02	can	1.20E-02	can
56-55-3	Benz[a]anthracene	5.21E+00	v	3.17E-02	can	1.80E-02	can
205-99-2	Benzo[b]fluoranthene	5.98E+01	v	6.55E-01	iv	9.07E+00	v
207-08-9	Benzo[k]fluoranthene	1.48E+02	v	6.55E-01	iv	5.60E-03	v
191-24-2	Benzo[ghi]perylene	1.19E+02	v	6.55E-01	iv	7.64E+00	v
50-32-8	Benzo[a]pyrene	1.00E-01	iv	3.19E-02	can	1.40E-02	iv
218-01-9	Chrysene	4.73E+00	v	5.71E-02	can	3.30E-02	v
53-70-3	Dibenz[ah]anthracene	1.84E+01	v	6.22E-03	can	1.60E-03	v
206-44-0	Fluoranthene	1.00E-01	iv	1.11E-01	can	4.00E-02	can
86-73-7	Fluorene	1.22E+02	v	2.12E-02	can	3.00E+00	can
193-39-5	Indeno[1,2,3-cd]pyrene	1.09E+02	v	6.55E-01	iv	4.31E+00	v
91-57-6	2-Methylnaphthalene			2.02E-02	can	2.10E+00	sut
91-20-3	Naphthalene	1.00E-01	iv	3.46E-02	can	1.10E+00	can
85-01-8	Phenanthrene	1.00E-01	iv	4.19E-02	can	4.00E-01	can
129-00-0	Pyrene	1.00E-01	iv	5.30E-02	can	2.50E-02	can
71-23-8	Propanol					7.50E+01	sut
110-86-1	Pyridine	1.00E-01	iv				
91-22-5	Quinoline					3.40E+00	can
121-82-4	RDX (Cyclonite)			1.32E-02	tal	1.90E+02	tal
299-84-3	Ronnel	1.00E-01	iv				
7782-49-2	Selenium	8.10E-01	iv	5.00E-02	kdep	1.00E+00	can
7440-22-4	Silver and compounds	2.00E+00	iv	7.33E-01	eff	1.20E-02	iv
122-34-9	Simazine					1.00E+01	can
7440-24-6	Strontium, stable					1.50E+03	sut
100-42-5	Styrene	1.00E-01	iv	4.45E-01	v	5.60E+01	v
18496-25-8	Sulfide					2.00E+00	iv
63705-05-5	Sulfur	2.00E+00	iv				
34014-18-1	Tebuthiuron					1.60E+00	can
1746-01-6	2,3,7,8-TCDD (dioxin)	5.00E-05	keen	1.00E-08	kdep	1.00E-05	iv
1746-01-6	2,3,7,8-TCDD (dioxin) - total equivalents	5.00E-05	keen	8.50E-07	can	1.00E-05	iv
634-66-2	1,2,3,4-Tetrachlorobenzene	1.00E-02	iv			1.80E+00	can
95-94-3	1,2,4,5-Tetrachlorobenzene	1.00E-02	iv			5.00E+01	iv
630-20-6	1,1,1,2-Tetrachloroethane	1.00E-01	iv	1.09E-02	v	2.40E+03	noaa
79-34-5	1,1,2,2-Tetrachloroethane	1.00E-01	iv	9.40E-01	etox	2.40E+02	iv
127-18-4	Tetrachloroethylene (PCE)	1.00E-02	iv	1.96E-01	v	8.40E+01	iv
n/a	Tetrachlorophenols - total	1.00E-03	iv			1.00E+00	can
4901-51-3	2,3,4,5-Tetrachlorophenol	2.00E+01	iv				
109-99-9	Tetrahydrofuran	1.00E-01	iv				
7440-28-0	Thallium	1.00E+00	iv	1.00E-01	kdep	8.00E-01	can

## KY Ecological Screening Values

CAS No.		Soil (mg/kg)	Sediment (mg/kg)	Water (µg/L)
7446-18-6	Thallium sulfate	1.00E+00	kdep	1.00E-01
NA	Thiocyanate	2.00E+00	iv	
n/a	Tin (inorganic, see tributyltin oxide for organic tin)	5.30E+01	iv	7.30E+01
7440-32-6	Titanium	1.00E+03	iv	
108-88-3	Toluene	5.00E-02	iv	6.70E-01
8001-35-2	Toxaphene	1.19E-01	v	1.09E-04
56-35-9	Tributyltin oxide (TBTO)			8.00E-03
636-30-6	2,4,5-Trichloroaniline	2.00E+01	iv	
634-93-5	2,4,6-Trichloroaniline	7.00E+00	kdep	7.00E-01
87-61-6	1,2,3-Trichlorobenzene	1.00E-02	iv	6.40E-02
120-82-1	1,2,4-Trichlorobenzene	1.00E-02	iv	6.40E-02
71-55-6	1,1,1-Trichloroethane	1.00E-01	iv	1.70E-01
79-00-5	1,1,2-Trichloroethane	1.00E-01	iv	6.74E-01
79-01-6	Trichloroethylene (TCE)	1.00E-03	iv	1.80E-01
75-69-4	Trichlorofluoromethane	1.00E-01	iv	3.07E-03
95-95-4	2,4,5-Trichlorophenol	4.00E+00	iv	8.56E-02
88-06-2	2,4,6-Trichlorophenol	1.00E+01	iv	8.48E-02
n/a	Trichlorophenols - total	1.00E-03	iv	
93-76-5	2,4,5-Trichlorophenoxyacetic Acid	1.00E-01	iv	
93-72-1	2-(2,4,5-Trichlorophenoxy) propionic acid (Silvex)	1.00E-01	iv	7.35E+00
96-18-4	1,2,3-Trichloropropane	1.00E-01	iv	8.35E-03
95-63-6	1,2,4-Trimethylbenzene	1.00E-01	iv	
108-67-8	1,3,5-Trimethylbenzene	1.00E-01	iv	
99-35-4	1,3,5-Trinitrobenzene	3.76E-01	v	2.40E-03
118-96-7	2,4,6-Trinitrotoluene			9.20E-02
668-34-8	Triphenyltin			2.20E-02
7440-33-7	Tungsten	4.00E+02	iv	
7440-61-1	Uranium (soluble salts)	5.00E+00	iv	2.60E-01
7440-62-2	Vanadium	2.00E+00	iv	2.00E-01
108-05-4	Vinyl acetate			8.40E-04
75-01-4	Vinyl chloride	1.00E-02	iv	2.00E-03
108-38-3	m-Xylene	5.00E-02	iv	2.50E-02
95-47-6	o-Xylene	5.00E-02	iv	1.88E+00
106-42-3	p-Xylene	5.00E-02	iv	2.50E-02
1330-20-7	Xylene (mixed)	5.00E-02	iv	1.88E+00
7440-66-6	Zinc	5.00E+01	iv	1.24E+02
7440-67-7	Zirconium			1.70E+01

barr Barrick, R., S. Becker, L. Brown, H. Beller, and R. Pastorok, 1988. Sediment Quality Values Refinement: 1988 Update and Evaluation of Puget Sound AET. Vol. 1. Prepared for the Puget Sound Estuary Program, Office of Puget Sound

birge Birge, W. J., A. G. Westerman, J. A. Spromberg, 2000. Comparative Toxicology and Risk Assessment of Amphibians. Ecotoxicology of Amphibians and Reptiles, D. W. Sporing, G. Linder and C. A. Bishop eds., Chapter 14A. Society of Environmental Toxicology and Chemistry Press, Pensacola, FL.

can Canadian Council of Ministers of the Environment, 1999 (updated 2001). Canadian Environmental Quality Guidelines. Winnipeg.

eff Effects Value from Sediment Screening Values taken from: United States Environmental Protection Agency (USEPA). 1996c (October). Supplemental Guidance to RAGS: Region 4 Bulletins, Ecological Screening Values. Office of Technical Services. Atlanta, GA.

etox United States Environmental Protection Agency (USEPA). 1996a (January). ECO Update: Ecotox Thresholds. Office of Solid Waste and Emergency Response. Washington, DC. EPA 540/F-95/038 [http://www.epa.gov/oerrpage/superfund/resources/ecotox/eco\\_updt.pdf](http://www.epa.gov/oerrpage/superfund/resources/ecotox/eco_updt.pdf)

iii United States Environmental Protection Agency (USEPA). 1995. Region III BTAG Ecological Screening Values. Philadelphia, PA.

iv United States Environmental Protection Agency (USEPA). 1996c (October). Supplemental Guidance to RAGS: Region 4 Bulletins, Ecological Screening Values. Office of Technical Services. Atlanta, GA.

kdep Kentucky Department for Environmental Protection (KDEP). 2002 (March). Risk Assessment Branch. Natural Resources and Environmental Protection Cabinet, Frankfort, KY.

noaa Buchman, M. F., 1999. NOAA Screening Quick Reference Tables (SQUIRTs). NOAA HAZMAT Report 99-1, Seattle, WA, Coastal Protection and Restoration Division, National Oceanic and Atmospheric Administration, 12 pages. <http://response.restoration.noaa.gov/cpr/sediment/squirt/squirt.pdf>

pad United States Department of Energy (USDOE). 2001 (December). Methods for Conducting Risk Assessments and Risk Evaluations at the Paducah Gaseous Diffusion Plant, Paducah, KY. Volume 2. Ecological. Office of Environmental Management. DOE/OR/07-1506/V2&D2

sut Suter and Tsao, 1996. Toxicological Benchmarks for Screening Potential Contaminants of Concern for Effects on Aquatic Biota: 1996 Revision.

tal Talmage, et al., 1999. Nitroaromatic Munition Compounds: Environmental Effects and Screening Values. Rev. Envir. Contam. Toxicol. 161:1-156.

v United States Environmental Protection Agency (USEPA). 1999 (October). Region 5 Ecological Data Quality Levels (EDQL). USEPA, Region 5, Chicago, IL. <http://www.epa.gov/region5/rcraca/edql10-4-99.PDF>

wwq Kentucky Department for Environmental Protection (KDEP). accessed on-line 2002 (March). Kentucky Division of Water Administrative Regulations, Surface Water Standards, Warm Water Aquatic Habitat Criteria. Natural Resources and Environmental Protection Cabinet, Frankfort, KY. 401 KAR 5:031 (hardness assumed to be 50 mg/l CaCO3, where applicable)

**THIS PAGE INTENTIONALLY LEFT BLANK**